

118 +/- Acres In Winston County, MS

Home Site/Hunting Spot



\$1,500/Acre

This 118+/- acre Winston County, MS property offers the diversity to be an excellent home site with your own hunting location right behind the house. The land consists of 23+/- acres of 12-year-old pine plantation, 77+/- acres of hardwood bottom, a sawtooth oak grove, wildlife food plots and internal trails. Murphy Creek traverses this parcel. The tract is situated on a paved, dead-end road, off HWY 14 just 5 miles east of Louisville. Utilities are available at the road frontage. Have country living, hunting and privacy right outside town. This place has a long history of producing quality bucks and you could build on that potential. Call Michael Halfacre to schedule a showing!

Directions from Louisville, Mississippi: From the Monument on Main Street in downtown Louisville, travel east on Hwy 14 for 4.8 miles. Turn left (north) onto Jack Pearson Road and travel .9 miles; the property is on the right, marked with a sign.



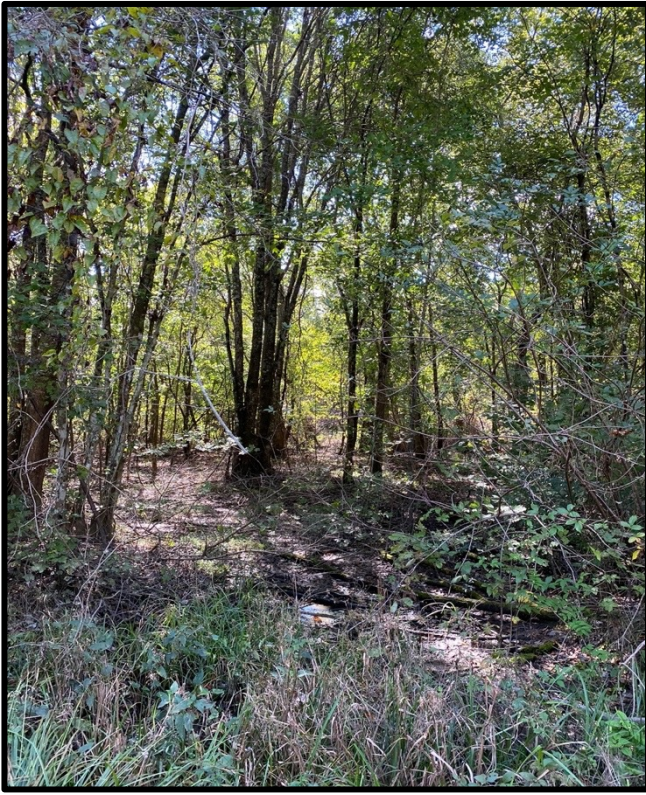
Call me today!

MICHAEL HALFACRE, MS REGISTERED FORESTER, ASSOC. BROKER
MHalfacre@TomSmithLand.com
662.268.6333 office | 662.242.4220 cell



TomSmithLandandHomes.com

Information is believed to be accurate but not guaranteed.

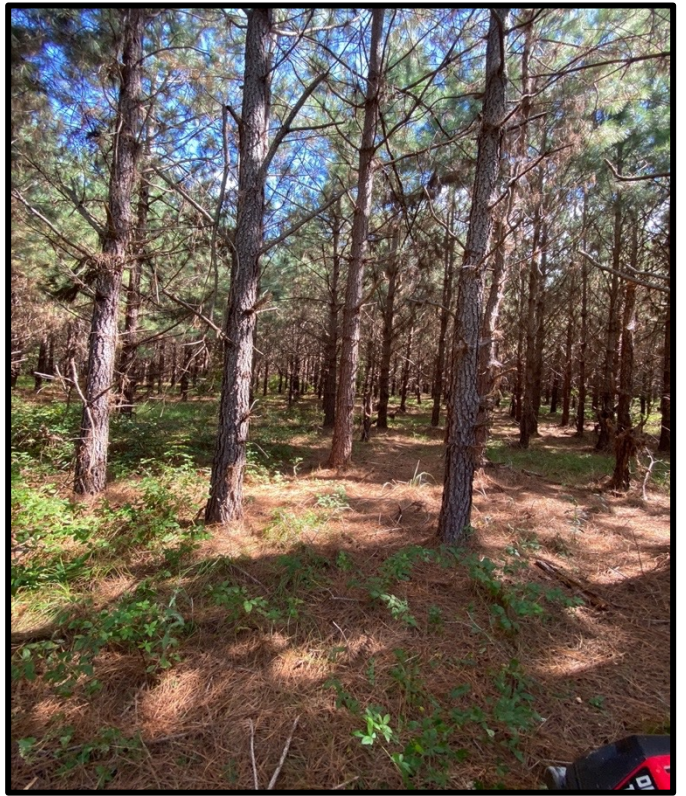


MICHAEL HALFACRE, MS REGISTERED FORESTER, ASSOC. BROKER
 MHalfacre@TomSmithLand.com
 662.268.6333 office | 662.242.4220 cell



TomSmithLandandHomes.com

Information is believed to be accurate but not guaranteed.



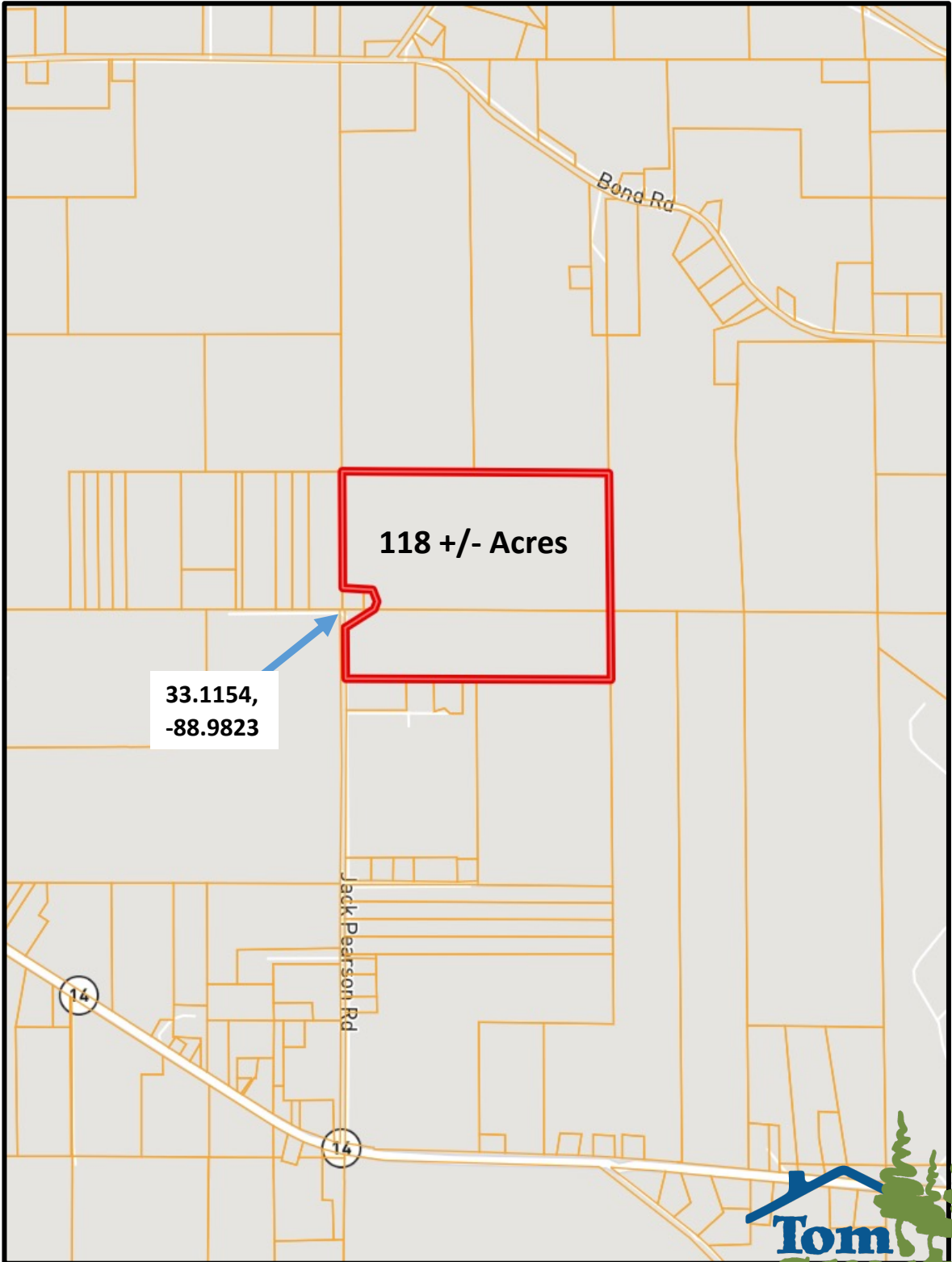
MICHAEL HALFACRE, MS REGISTERED FORESTER, ASSOC. BROKER
 MHalfacre@TomSmithLand.com
 662.268.6333 office | 662.242.4220 cell



TomSmithLandandHomes.com

Information is believed to be accurate but not guaranteed.

Ownership Map



MICHAEL HALFACRE, MS REGISTERED FORESTER, ASSOC. BROKER

MHalfacre@TomSmithLand.com

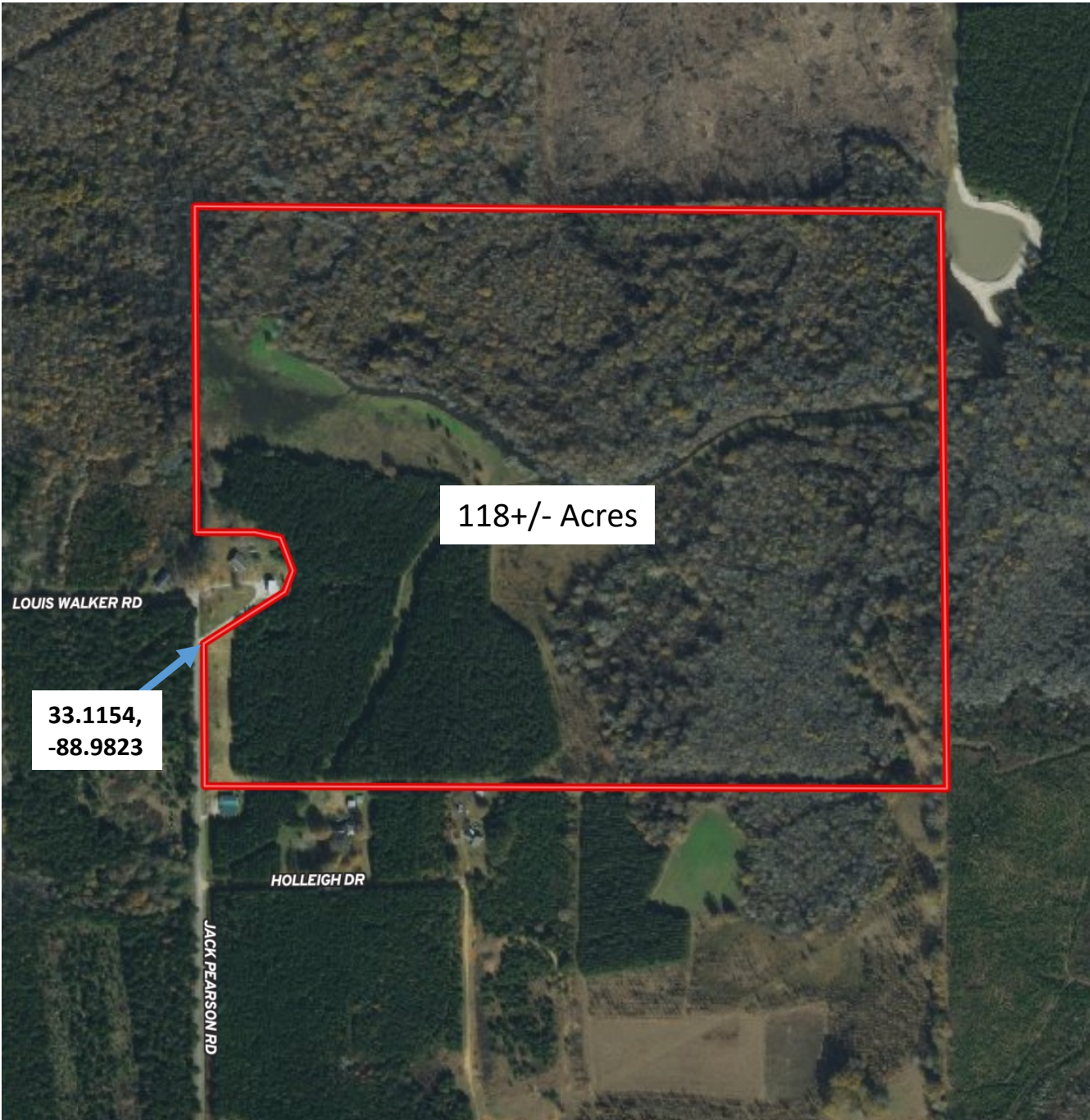
662.268.6333 office | 662.242.4220 cell



TomSmithLandandHomes.com

Information is believed to be accurate but not guaranteed.

Aerial Photograph



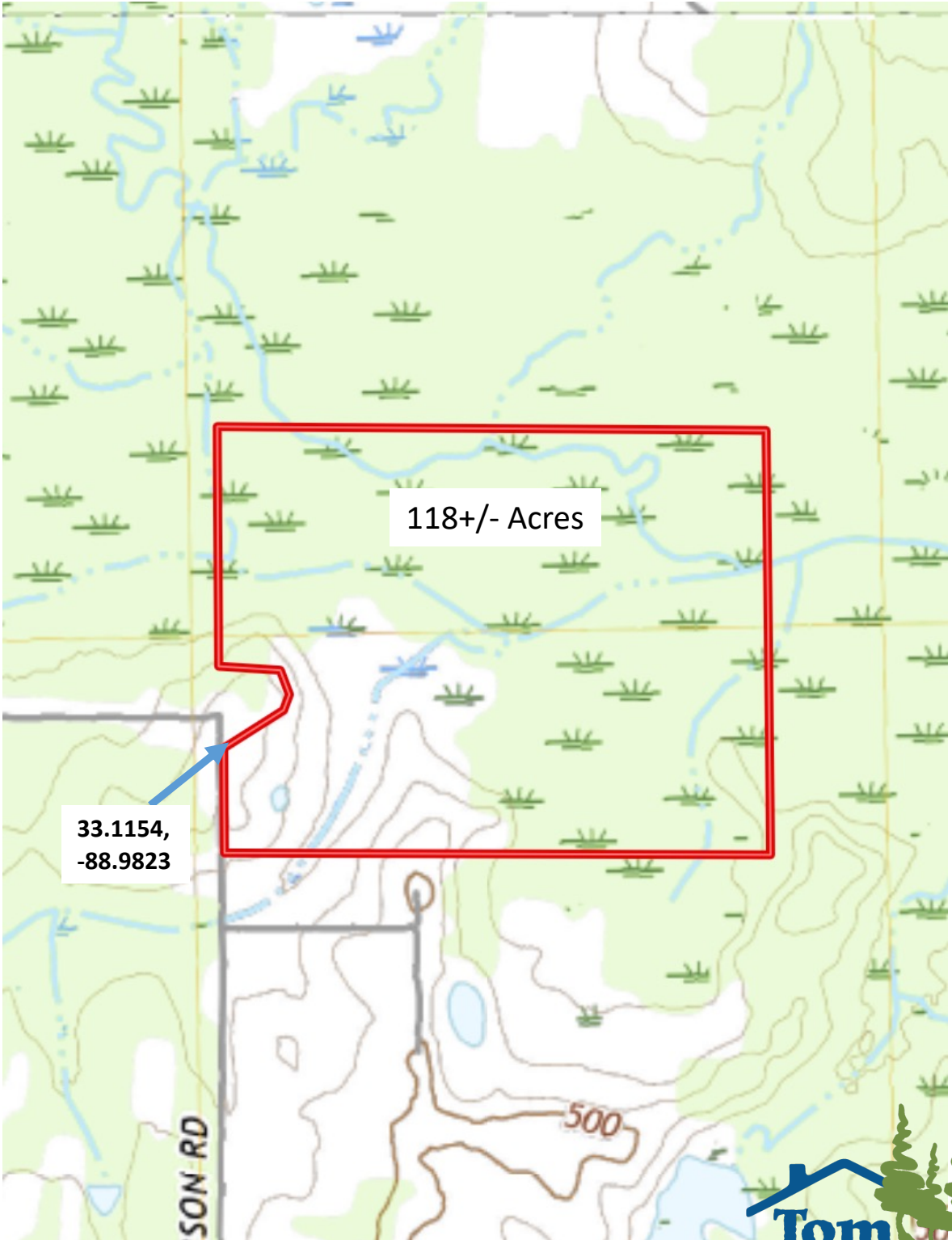
MICHAEL HALFACRE, MS REGISTERED FORESTER, ASSOC. BROKER
MHalfacre@TomSmithLand.com
662.268.6333 office | 662.242.4220 cell



TomSmithLandandHomes.com

Information is believed to be accurate but not guaranteed.

Topographic Map



33.1154,
-88.9823

118+/- Acres



MICHAEL HALFACRE, MS REGISTERED FORESTER, ASSOC. BROKER

MHalfacre@TomSmithLand.com

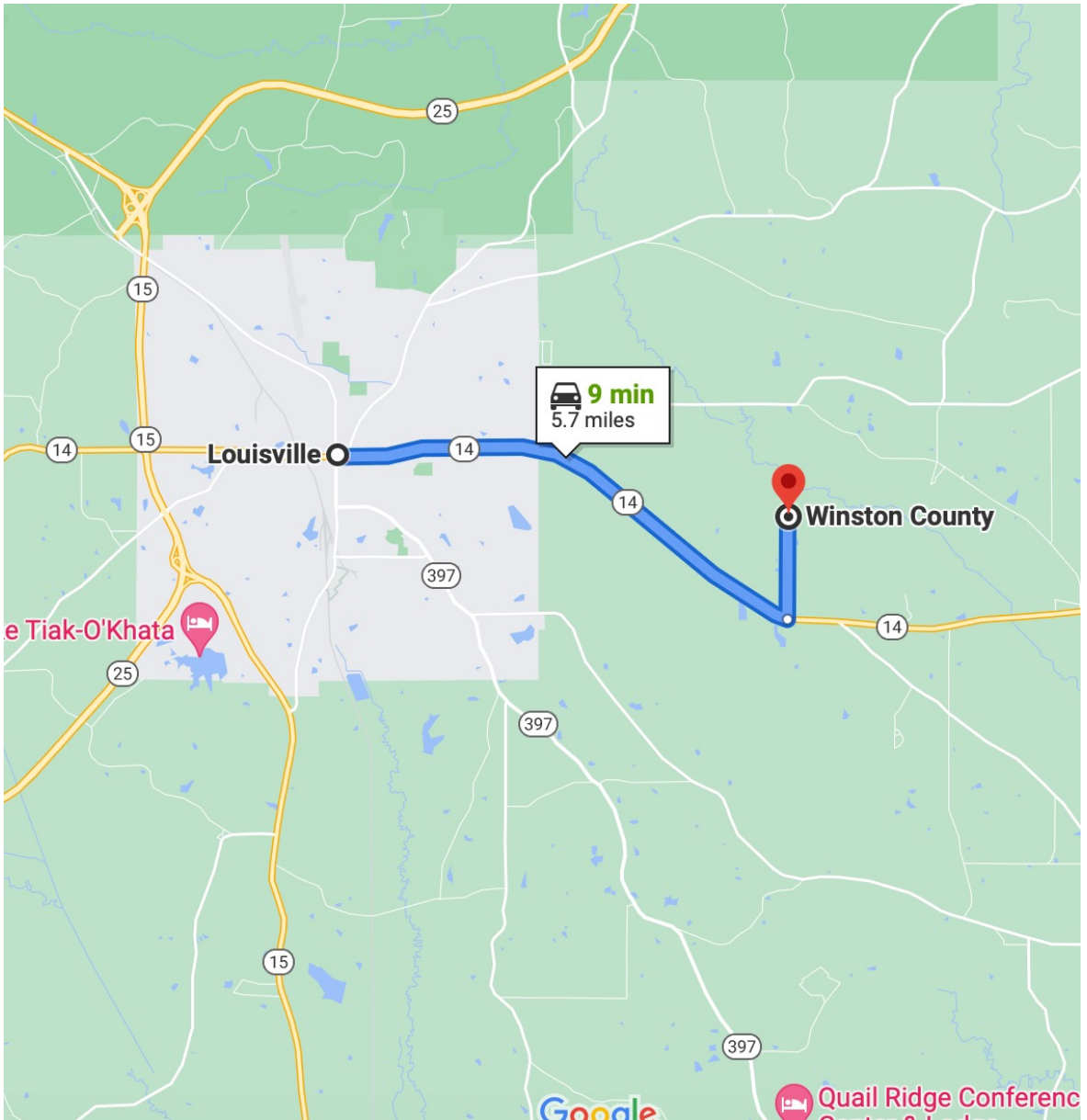
662.268.6333 office | 662.242.4220 cell



TomSmithLandandHomes.com

Information is believed to be accurate but not guaranteed.

Directional Map



Directions from Louisville, Mississippi; From the Monument on Main Street, downtown Louisville, travel east on Hwy 14 for 4.8 miles and turn left (north) onto Jack Pearson Road. Travel .9 mile and property is on the right marked with a sign. Call Michael to set up an appointment to visit the property.



Call me today!

MICHAEL HALFACRE, MS REGISTERED FORESTER, ASSOC. BROKER

MHalfacre@TomSmithLand.com

662.268.6333 office | 662.242.4220 cell



TomSmithLandandHomes.com

Information is believed to be accurate but not guaranteed.