

Elegant Farmhouse on 4.98+/- Acres Claiborne County, MS



20167 Hwy 547 Pattison, MS 39144

Southern elegance at its best. That is the only way to describe this wonderful World War II era farmhouse located in Claiborne County, MS. The 3,000+/- square foot four-bedroom, three-bathroom home on Hwy 547 just outside of Pattison, MS, offers something you just cannot get in a contemporary home. Sitting on 4.98+/- acres of 16th section land, this unique home is just waiting for its new owners to restore it to its former glory. From the stately front porch columns to the beautiful brick patio, this home has an essence that you must experience in person. The beautiful hardwood floors and walls of mahogany, cherry, oak, and numerous other beautiful woods will bring you back to a simpler time. The manicured lawn offers beautiful shrubbery, and multiple sitting areas for quiet afternoons in the shade. Call Clif Cannon today to schedule your private tour of the unique property!

Directions from Exit #51 off I-55N in Wesson, MS: Take the exit towards Wesson and travel 0.3 miles. Keep left at the fork and merge onto Sylvarena Road. Travel 9.1 miles and continue straight on Sylvarena Road. Travel 377 feet and turn left onto MS-28 W, continue for 6.7 miles. Turn right onto MS-547N and the home will be on the right in 10.6 miles.



Call me today!

CLIF CANNON, REALTOR®
Clif@TomSmithLand.com
601.990.5070 office | 601.565.1070 cell



TomSmithLandandHomes.com

Information is believed to be accurate but not guaranteed.



Call me today!

CLIF CANNON, REALTOR®

Clif@TomSmithLand.com

601.990.5070 **office** | 601.565.1070 **cell**



TomSmithLandandHomes.com

Information is believed to be accurate but not guaranteed.



Call me today!

CLIF CANNON, REALTOR®

Clif@TomSmithLand.com

601.990.5070 **office** | 601.565.1070 **cell**



**Tom
Smith
LAND AND
HOMES**

Expect More. Get More.

TomSmithLandandHomes.com

Information is believed to be accurate but not guaranteed.



Call me today!

CLIF CANNON, REALTOR®

Clif@TomSmithLand.com

601.990.5070 **office** | 601.565.1070 **cell**



Expect More. Get More.

TomSmithLandandHomes.com

Information is believed to be accurate but not guaranteed.



Call me today!

CLIF CANNON, REALTOR®

Clif@TomSmithLand.com

601.990.5070 **office** | 601.565.1070 **cell**



Expect More. Get More.

TomSmithLandandHomes.com

Information is believed to be accurate but not guaranteed.

Aerial Map



[Interactive Map](#)

Call me today!

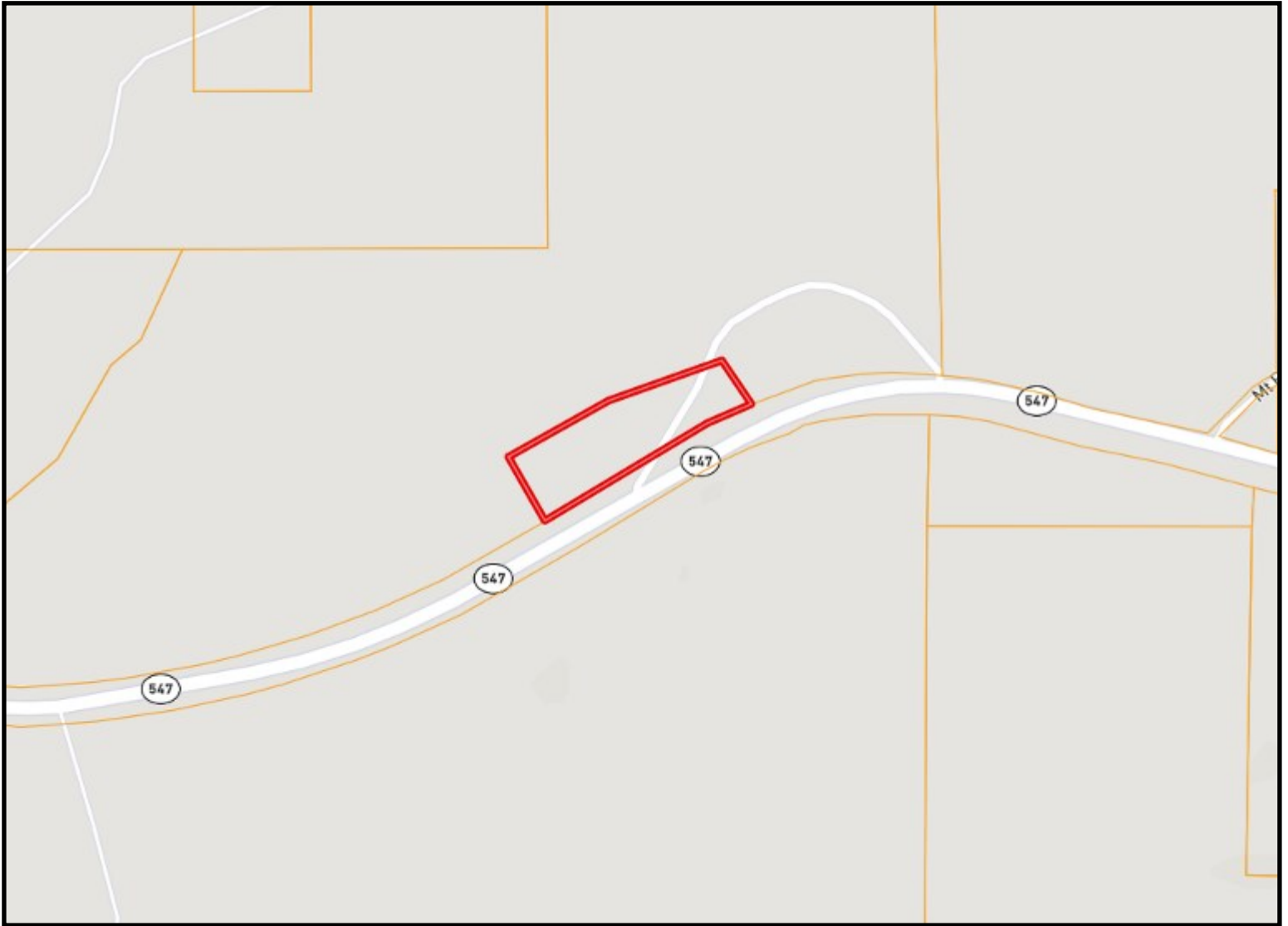
CLIF CANNON, REALTOR®
Clif@TomSmithLand.com
601.990.5070 **office** | 601.565.1070 **cell**



TomSmithLandandHomes.com

Information is believed to be accurate but not guaranteed.

Ownership Map



Call me today!

CLIF CANNON, REALTOR®

Clif@TomSmithLand.com

601.990.5070 **office** | 601.565.1070 **cell**

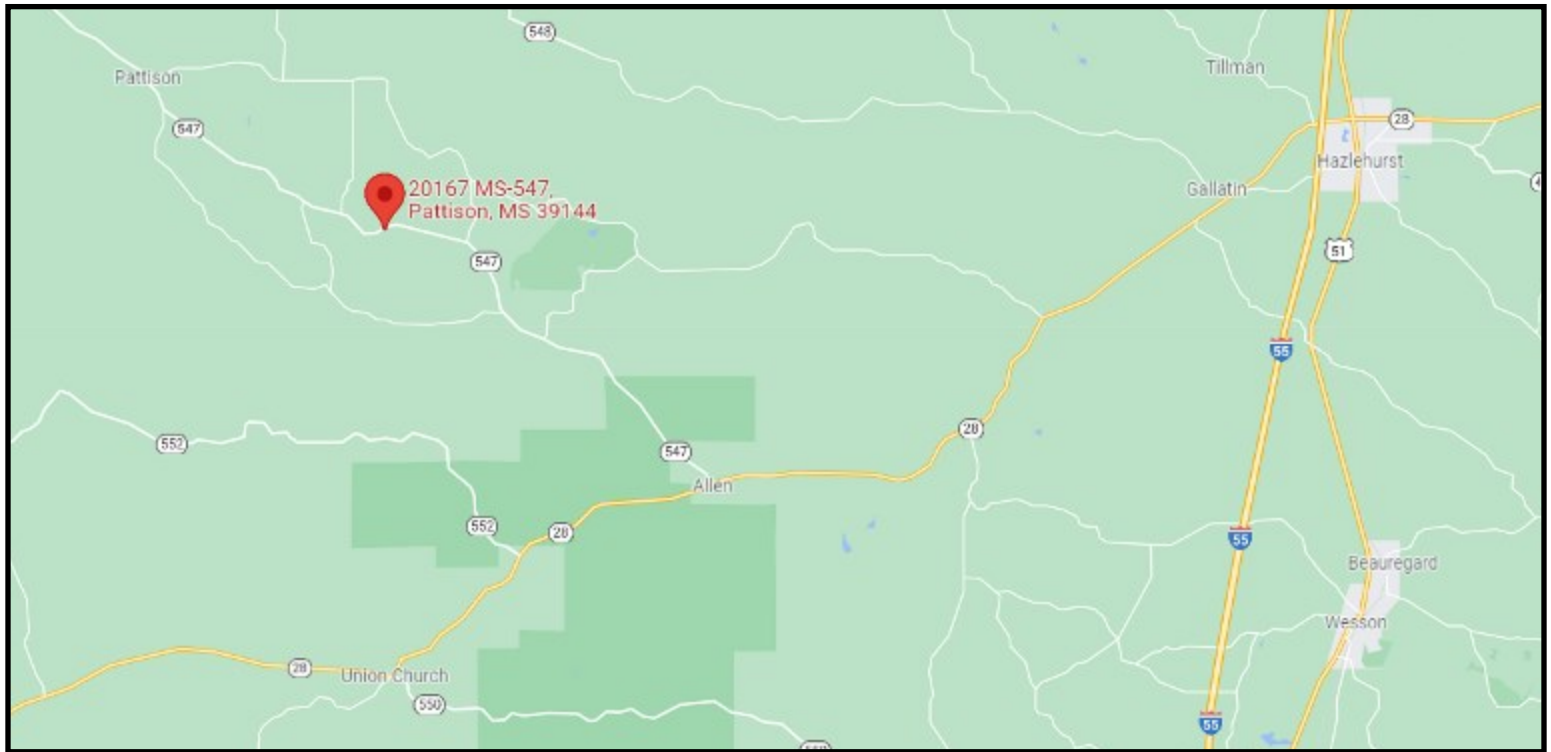


Expect More. Get More.

TomSmithLandandHomes.com

Information is believed to be accurate but not guaranteed.

Directional Map



Google Maps

20167 Hwy 547 Pattison, MS 39144

Directions from Exit #51 off I-55N in Wesson, MS: Take the exit towards Wesson and travel 0.3 miles. Keep left at the fork and merge onto Sylvarena Road. Travel 9.1 miles and continue straight on Sylvarena Road. Travel 377 feet and turn left onto MS-28 W, continue for 6.7 miles. Turn right onto MS-547N

Call me today!

CLIF CANNON, REALTOR®

Clif@TomSmithLand.com

601.990.5070 **office** | 601.565.1070 **cell**



Expect More. Get More.

TomSmithLandandHomes.com

Information is believed to be accurate but not guaranteed.