

Unique Home on 4.98+/- Acres Claiborne County, MS



20167 Hwy 547 Pattison, MS 39144

WHAT A GEM...this pre-WW2 home is something to see!! If you are looking for something unique, cozy, and off the beaten path, come visit this property in Claiborne County, MS. Situated just off Hwy 547 on 4.98+/- acres of 16th section land, this 3,000+/- square foot home features original hardwood floors, hand hewn exotic wood lining the ceilings and walls, a cast iron farmhouse sink in the kitchen, two living rooms, four bedrooms, three baths, and additional, neat spaces to be anything you wish. The front porch demands coffee sipping while the herringbone-patterned brick patio out back is perfect for a glass of a tea. Take note of the man-hole on the back patio offering access to the underground bunker. Multiple sheds are on site for storage, along with a detached concrete patio for hummingbird watching. A small guest house is located towards the back of the property and could potentially become a workshop. Make an appointment to see this beauty today; call Sabrina to schedule your private showing!

Directions from Exit #51 off I-55N in Wesson, MS: Take the exit towards Wesson and travel 0.3 miles. Keep left at the fork and merge onto Sylvarena Road. Travel 9.1 miles and continue straight on Sylvarena Road. Travel 377 feet and turn left onto MS-28 W, continue for 6.7 miles. Turn right onto MS-547N and the home will be on the right in 10.6 miles.



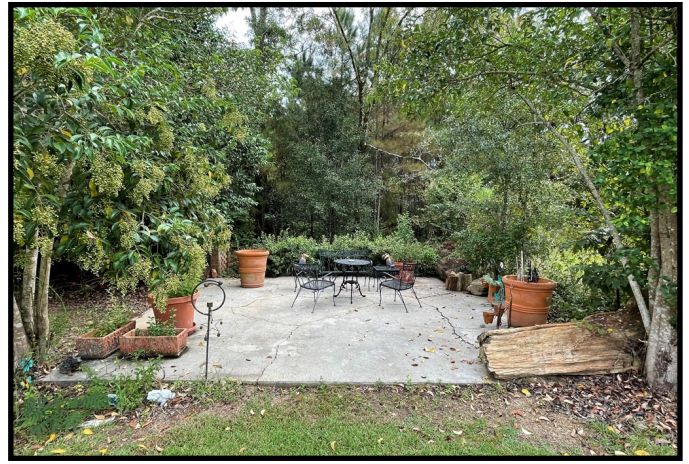
call me today!

SABRINA WOLFF, REALTOR®
Sabrina@TomSmithHomes.com
601.990.5070 office | 601.754.3763 cell



TomSmithLandandHomes.com

Information is believed to be accurate but not guaranteed.



LandReport
2010-2021
AMERICAN
BEST
BROKERAGES

Call me today!

SABRINA WOLFF, REALTOR®
Sabrina@TomSmithHomes.com
601.990.5070 office | 601.754.3763 cell



TomSmithLandandHomes.com

Information is believed to be accurate but not guaranteed.



Call me today!

SABRINA WOLFE, REALTOR®
Sabrina@TomSmithHomes.com
601.990.5070 office | 601.754.3763 cell



TomSmithLandandHomes.com

Information is believed to be accurate but not guaranteed.



LandReport
2010-2021
AMERICAN
BEST
BROKERAGES

Call me today!

SABRINA WOLFE, REALTOR®
Sabrina@TomSmithHomes.com
601.990.5070 office | 601.754.3763 cell



Expect More. Get More.

TomSmithLandandHomes.com

Information is believed to be accurate but not guaranteed.



Call me today!

SABRINA WOLFF, REALTOR®
Sabrina@TomSmithHomes.com
601.990.5070 office | 601.754.3763 cell



TomSmithLandandHomes.com

Information is believed to be accurate but not guaranteed.

Aerial Map



Call me today!

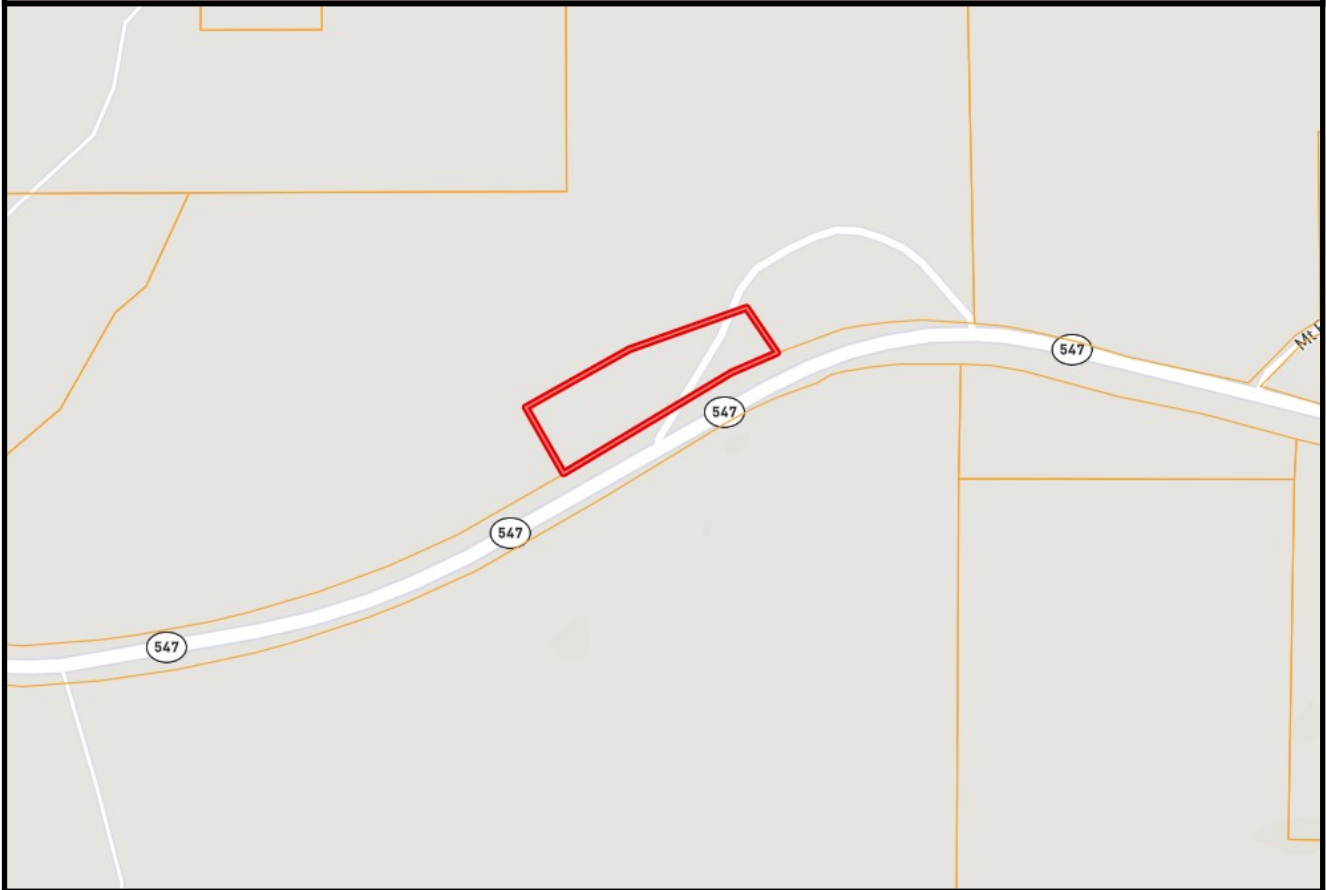
SABRINA WOLFF, REALTOR®
Sabrina@TomSmithHomes.com
601.990.5070 office | 601.754.3763 cell



TomSmithLandandHomes.com

Information is believed to be accurate but not guaranteed.

Ownership Map



LandReport
2010-2021
AMERICAN
BEST
BROKERAGES

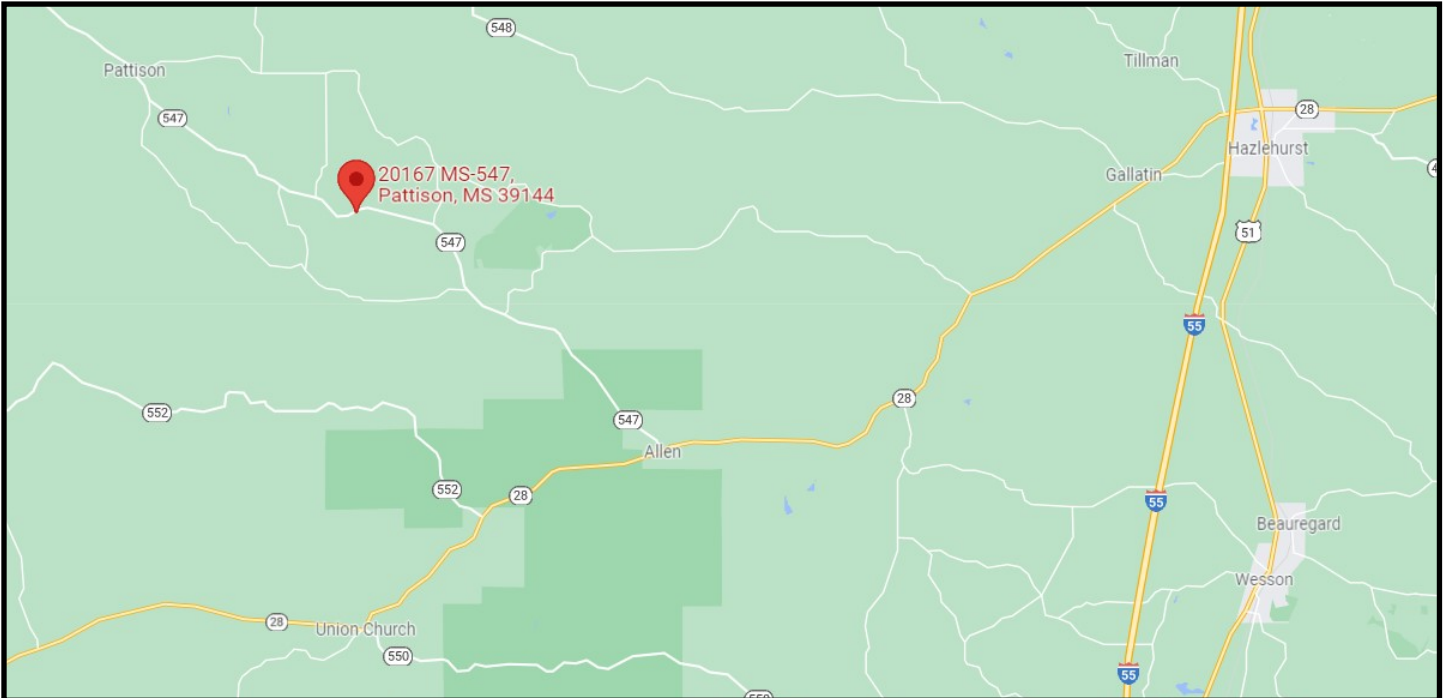
call me today!

SABRINA WOLFF, REALTOR®
Sabrina@TomSmithHomes.com
601.990.5070 office | 601.754.3763 cell



TomSmithLandandHomes.com

Information is believed to be accurate but not guaranteed.



Directional Map

20167 Hwy 547 Pattison, MS 39144

Directions from Exit #51 off I-55N in Wesson, MS: Take the exit towards Wesson and travel 0.3 miles. Keep left at the fork and merge onto Sylvarena Road. Travel 9.1 miles and continue straight on Sylvarena Road. Travel 377 feet and turn left onto MS-28 W, continue for 6.7 miles. Turn right onto MS-547N and the home will be on the right in 10.6 miles.



Call me today!

SABRINA WOLFF, REALTOR®
Sabrina@TomSmithHomes.com
601.990.5070 office | 601.754.3763 cell



Expect More. Get More.

TomSmithLandandHomes.com

Information is believed to be accurate but not guaranteed.