

63+/- Acres of Diversity

Jackson County, MS

9505 Forts Lake Rd. Moss Point, MS



\$700,000

DIVERSE TRACT IN JACKSON COUNTY, MS...LESS THAN ONE HOUR FROM THE COAST! This 63+/- acre property offers development potential, hunting, fishing and a three bedroom, two bath, brick home. Hardwoods and live oaks are scattered about providing an excellent environment for deer and small game. Enjoy fishing the 3.5+/- acre stocked lake or splash around in the live creek flowing on the southern boundary. The house is situated on a private drive and a barn/shop can be utilized for storage or workshop. Access the property with ease from Inzer Road or Forks Lake Road. For the investor, divide the tract into smaller lots around the lake; this property would make an excellent RV park. Call Preston Smith to make an appointment to view this gorgeous piece!

Directions from Moss Point, MS: Travel north on MS-613 N for 2.5 miles and merge onto I-10 E. Travel 7.2 miles to exit #75 for Franklin Creek Road. Travel .2 miles and keep left, following the signs for Franklin Creek Road. In 118 feet turn left onto Franklin Creek Road, then in .5 miles turn right onto Independence Road. Travel .3 miles and turn left onto Forts Lake Road; the property will be on the left in .6 miles.



Call me today!

PRESTON SMITH, MANAGING BROKER

Preston@TomSmithLand.com

601.990.5070 office | 601.209.7150 cell



Expect More. Get More.

TomSmithLandandHomes.com

Information is believed to be accurate but not guaranteed.



Call me today!

PRESTON SMITH, MANAGING BROKER
Preston@TomSmithLand.com
601.990.5070 office | 601.209.7150 cell



TomSmithLandandHomes.com

Information is believed to be accurate but not guaranteed.



Call me today!

PRESTON SMITH, MANAGING BROKER
Preston@TomSmithLand.com
601.990.5070 office | 601.209.7150 cell



TomSmithLandandHomes.com

Information is believed to be accurate but not guaranteed.

Aerial Map



63± Acres

30.4801

-88.4158



Call me today!



PRESTON SMITH, MANAGING BROKER
Preston@TomSmithLand.com
601.990.5070 office | 601.209.7150 cell



Expect More. Get More.

TomSmithLandandHomes.com

Information is believed to be accurate but not guaranteed.

Ownership Map



Call me today!

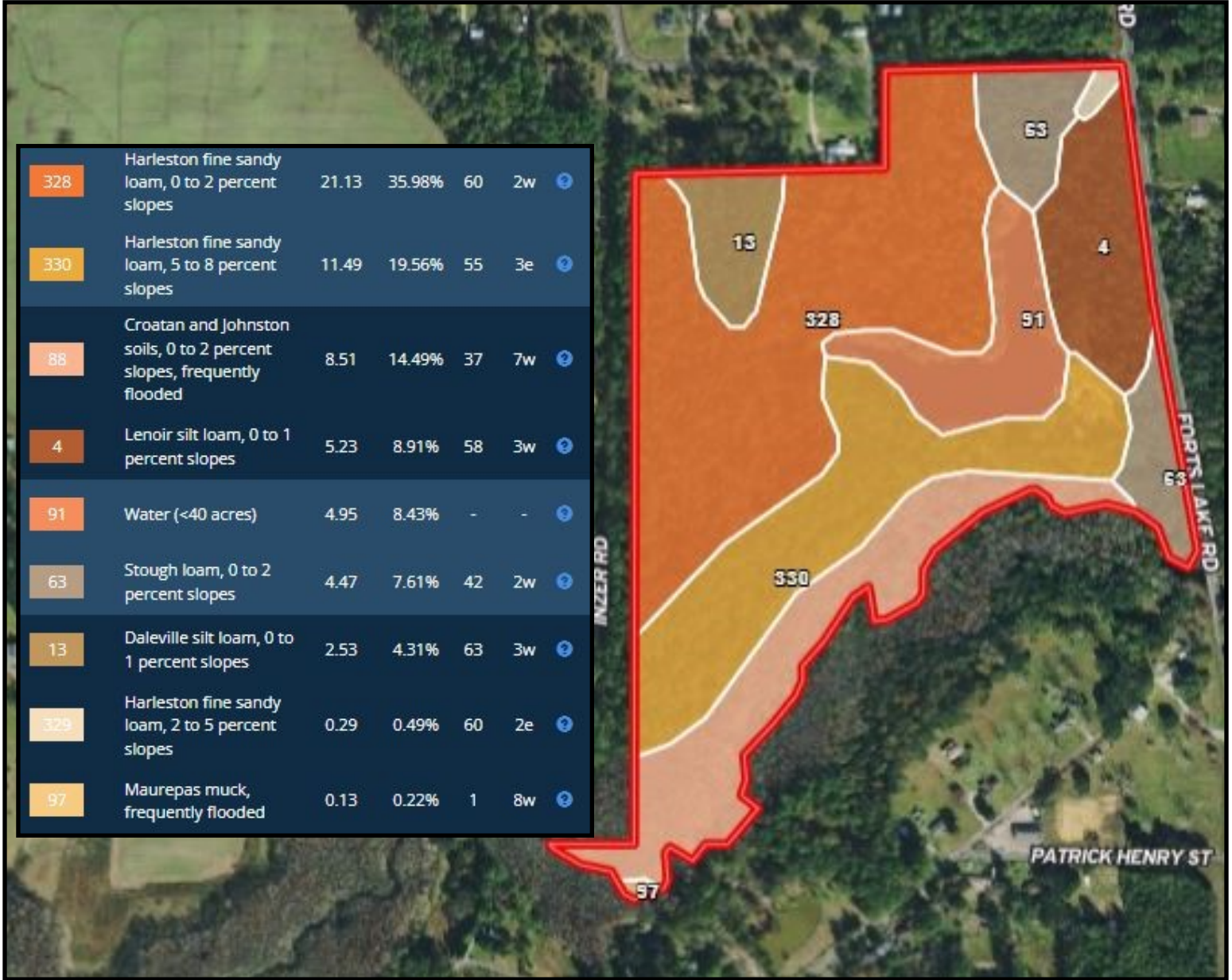
PRESTON SMITH, MANAGING BROKER
Preston@TomSmithLand.com
601.990.5070 office | 601.209.7150 cell



TomSmithLandandHomes.com

Information is believed to be accurate but not guaranteed.

Soil Map



Call me today!

PRESTON SMITH, MANAGING BROKER

Preston@TomSmithLand.com

601.990.5070 office | 601.209.7150 cell

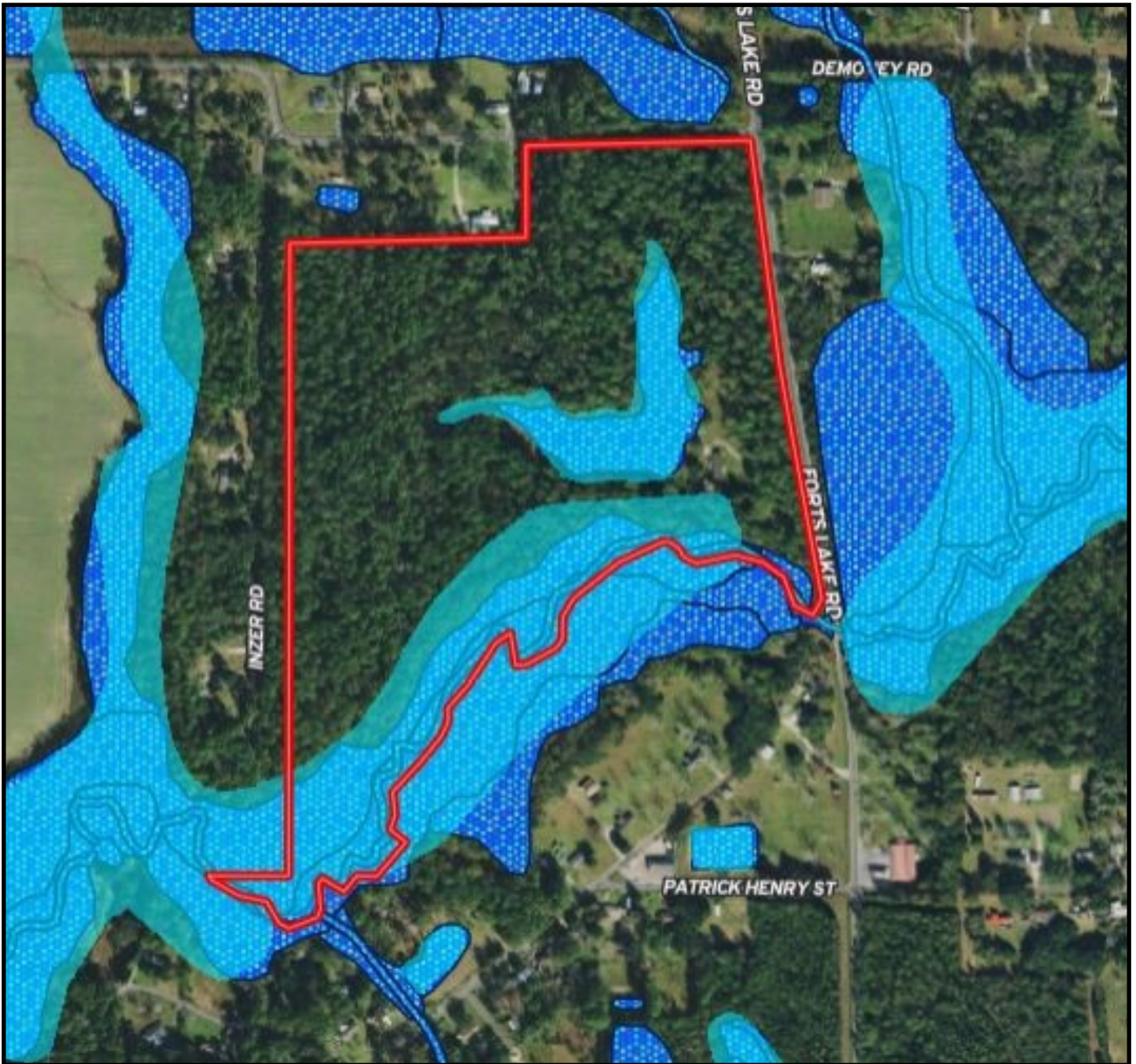


Expect More. Get More.

TomSmithLandandHomes.com

Information is believed to be accurate but not guaranteed.

Flood Map



Call me today!

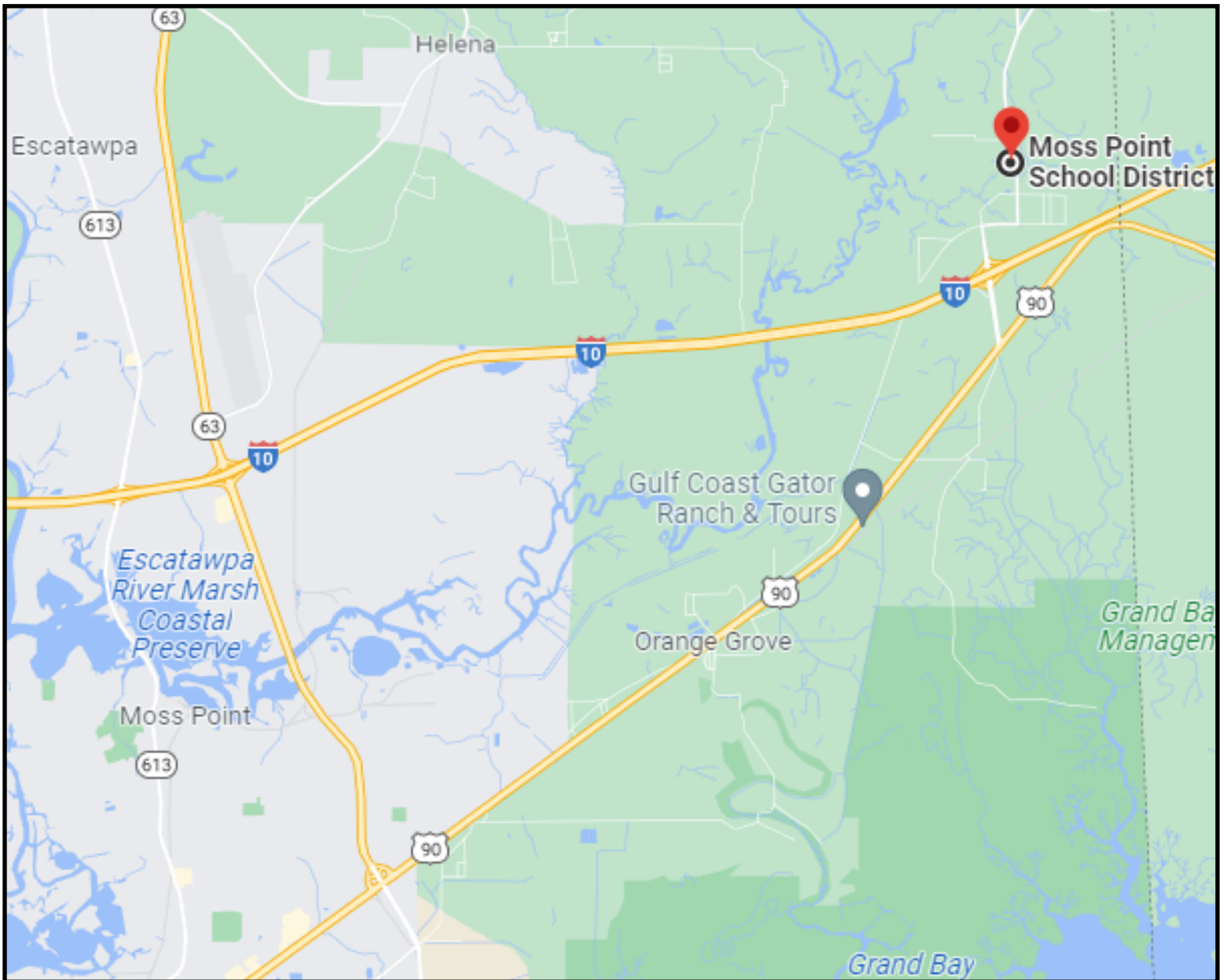
PRESTON SMITH, MANAGING BROKER
Preston@TomSmithLand.com
601.990.5070 office | 601.209.7150 cell



TomSmithLandandHomes.com

Information is believed to be accurate but not guaranteed.

Directional Map



Directions from Moss Point, MS: Travel north on MS-613 N for 2.5 miles and merge onto I-10 E. Travel 7.2 miles to exit #75 for Franklin Creek Road. Travel .2 miles and keep left, following the signs for Franklin Creek Road. In 118 feet turn left onto Franklin Creek Road, then in .5 miles turn right onto Independence Road. Travel .3 miles and turn left onto Forts Lake Road; the property will be on the left in .6 miles.



Call me today!

PRESTON SMITH, MANAGING BROKER
Preston@TomSmithLand.com
601.990.5070 office | 601.209.7150 cell



TomSmithLandandHomes.com

Information is believed to be accurate but not guaranteed.