

Secluded Homesite

15+/- Acres in Madison County, MS



\$249,000

This 15+/- acre homesite, located on Livingston Road In Madison County, MS is a must-see if you are looking for the perfect family estate! It features gently rolling terrain, complete privacy and is tucked away to ensure freedom from traffic and neighbors. Water and power are available at the street . There are several homesites to choose from, and the topography should allow a 3-5 acre pond if you so desire. Priced to sell, don't let this property slip by without taking a serious look. Call Tom today!



Call The Land Man today!

TOM SMITH, ALC, BROKER®

Tom@TomSmithLand.com

601.898.2772 office | 601.454.9397 cell



TomSmithLand.com

Information is believed to be accurate but not guaranteed.



TOM SMITH, ALC, BROKER®
 Tom@TomSmithLand.com
 601.898.2772 office | 601.454.9397 cell



TomSmithLand.com

Information is believed to be accurate but not guaranteed.



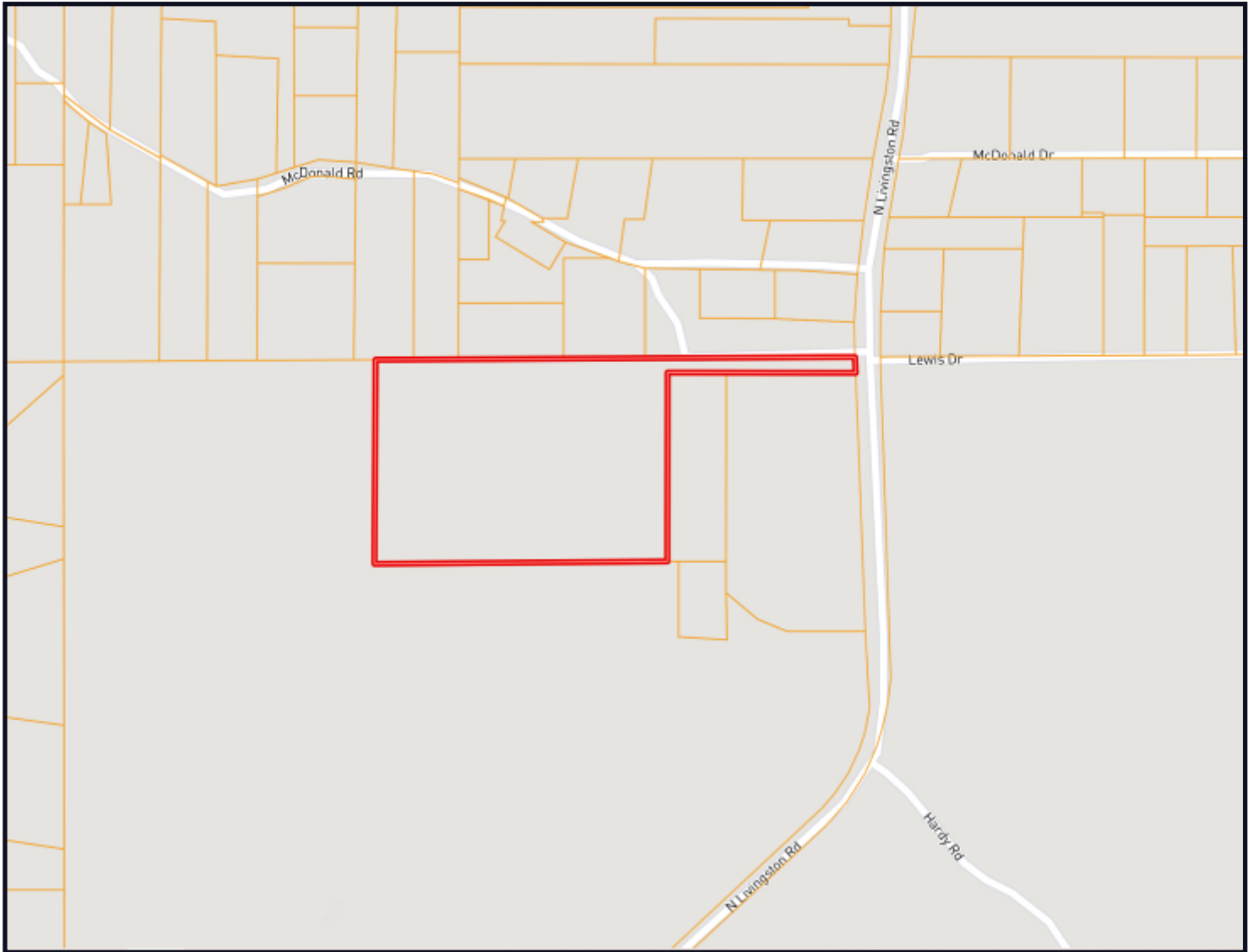
TOM SMITH, ALC, BROKER®
 Tom@TomSmithLand.com
 601.898.2772 office | 601.454.9397 cell



TomSmithLand.com

Information is believed to be accurate but not guaranteed.

OWNERSHIP MAP



TOM SMITH, ALC, BROKER®
Tom@TomSmithLand.com
601.898.2772 office | 601.454.9397 cell



TomSmithLand.com

Information is believed to be accurate but not guaranteed.

AERIAL MAP



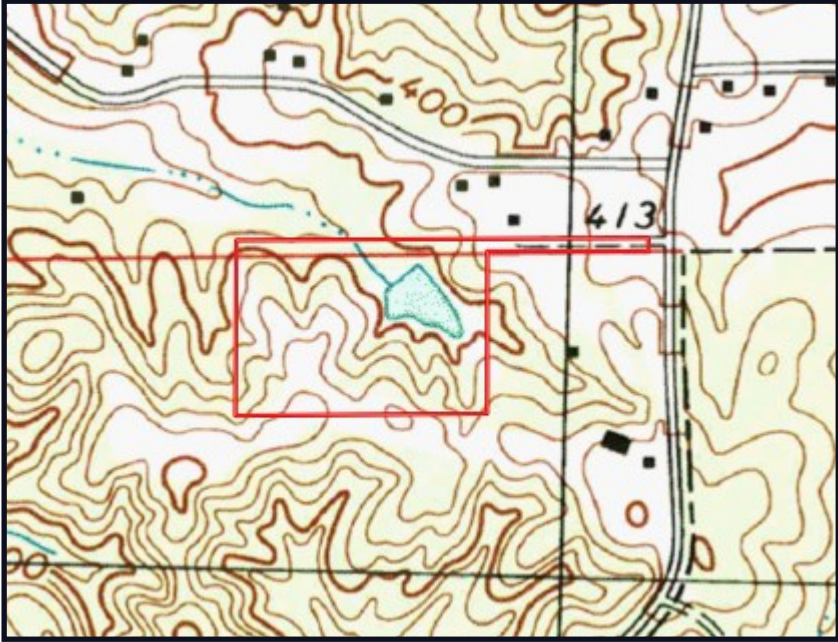
[CLICK HERE FOR AN INTERACTIVE MAP](#)

TOM SMITH, ALC, BROKER®
Tom@TomSmithLand.com
601.898.2772 office | 601.454.9397 cell

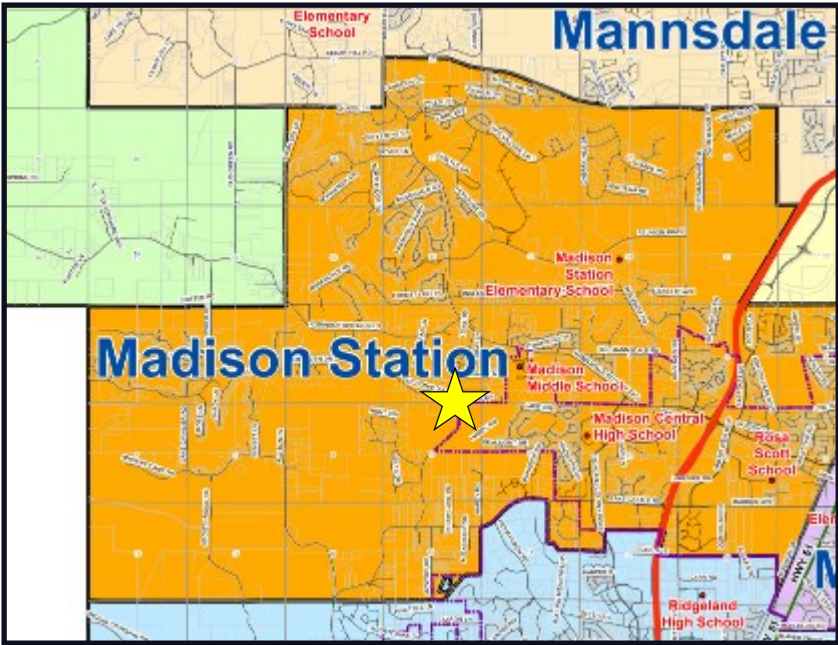


TomSmithLand.com

Information is believed to be accurate but not guaranteed.



TOPO MAP



SCHOOL DISTRICT ZONE MAP



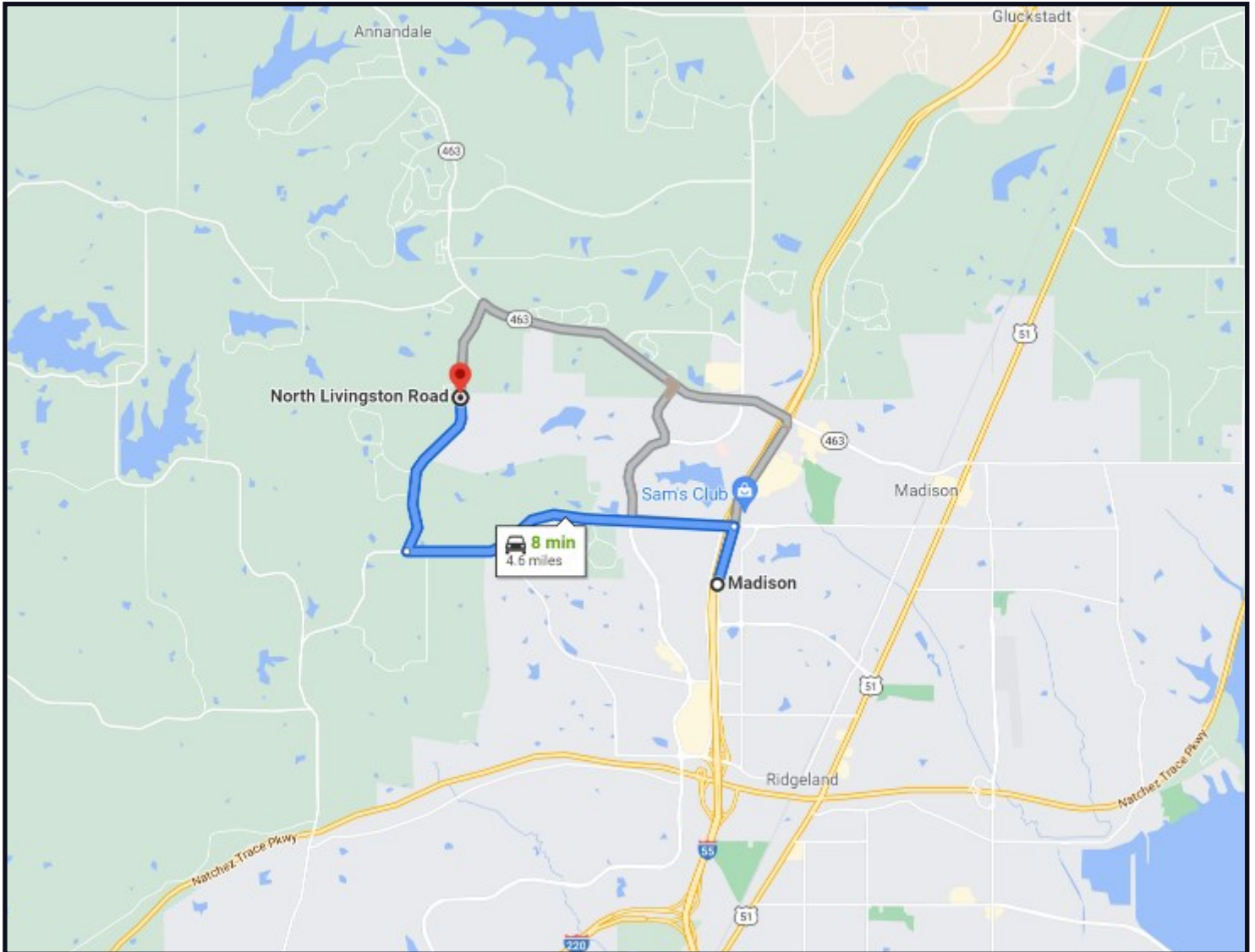
TOM SMITH, ALC, BROKER®
Tom@TomSmithLand.com
601.898.2772 office | 601.454.9397 cell



TomSmithLand.com

Information is believed to be accurate but not guaranteed.

DIRECTIONAL MAP



DIRECTIONS FROM I-55 IN MADISON, MS: Travel Lake Castle Road 4.6 miles. Turn right on N Livingston Road and travel 1.4 miles. The entrance to the property will be on your left. [GOOGLE MAP LINK](#)



Call The Land Man today!

TOM SMITH, ALC, BROKER®
Tom@TomSmithLand.com
601.898.2772 office | 601.454.9397 cell



TomSmithLand.com

Information is believed to be accurate but not guaranteed.