



Madison County Lot .50± ACRES IN MADISON, MS



\$149,500

This .50 acre parcel is located on Crawford Street near Rosa Scott Elementary in Madison, MS. Currently zoned R-2, the property is directly in the path of growth in the city of Madison. The possibilities for this property are unlimited for the potential investor/developer. An additional lot is also available and could be put with this property to make a larger lot if that's what is needed. For further information, call Tom today!

Directions from I-55 in Madison, MS: Take exit 108 towards Madison/ Main Street. Travel Main Street for .4 miles. Turn right on Jones Street and travel .5 miles. Turn right on Crawford Street and travel .3 miles. The property will be on your right. [Google Map Link](#)



Call The Land Man today!

TOM SMITH, ALC, BROKER®
Tom@TomSmithLand.com
601.898.2772 office | 601.454.9397 cell

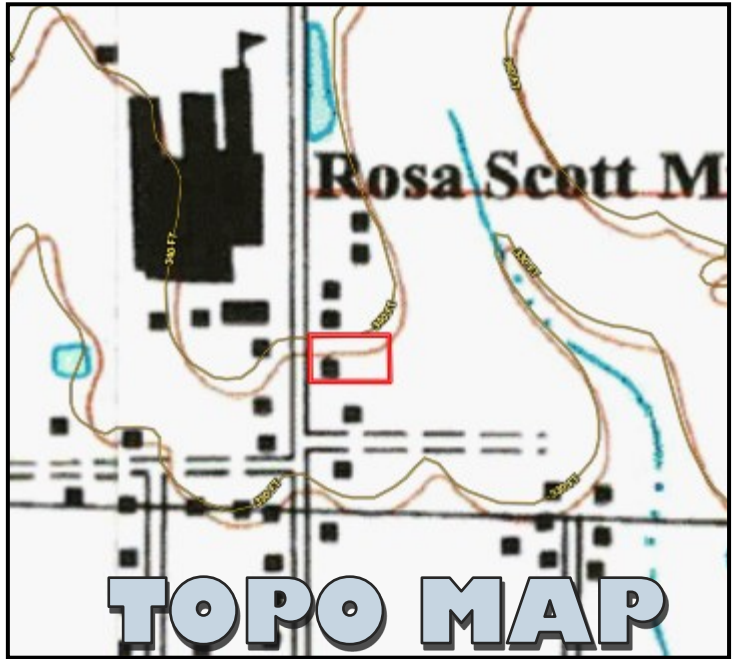


TomSmithLand.com

Information is believed to be accurate but not guaranteed.



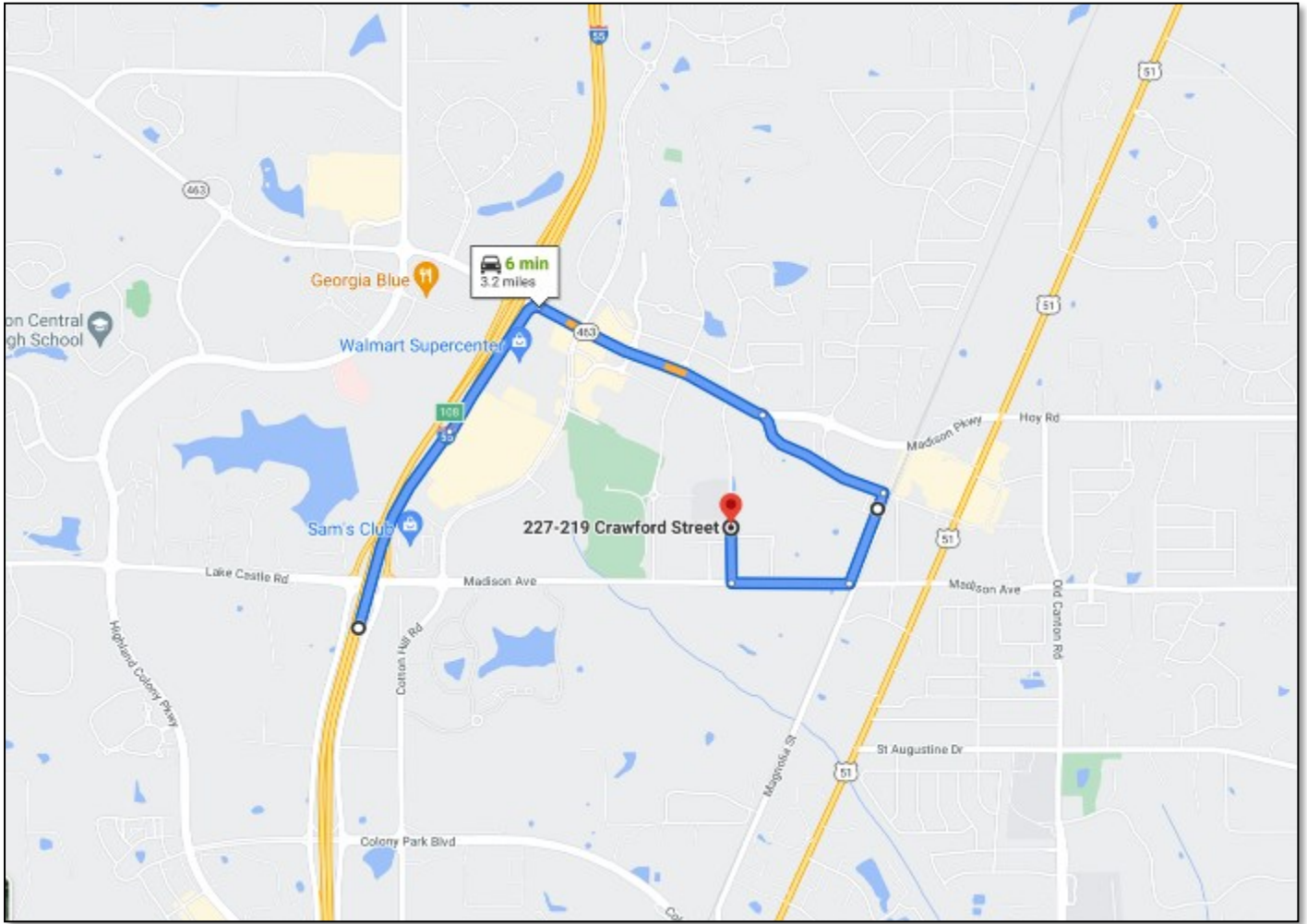
OWNERSHIP MAP



TOPO MAP



AERIAL MAP



DIRECTIONAL MAP

Directions from I-55 in Madison, MS: Take exit 108 towards Madison/ Main Street. Travel Main Street for .4 miles. Turn right on Jones Street and travel .5 miles. Turn right on Crawford Street and travel .3 miles. The property will be on your right. [Google Map Link](#)



Call The Land Man today!

TOM SMITH, ALC, BROKER®
 Tom@TomSmithLand.com
 601.898.2772 office | 601.454.9397 cell



TomSmithLand.com

Information is believed to be accurate but not guaranteed.