



**80.5± ACRE DEVELOPMENT  
OPPORTUNITY  
MADISON COUNTY, MS**

**\$1,167,250**

**This 80.5+/- acre development tract is located only 1.5 miles from The Renaissance, The Natchez Trace and only ¼ mile from Bridgewater Subdivision! The Madison County, MS property is situated in the City of Ridgeland and fronts Greens Crossing Road. This place is ready for development or for the family wanting a lifetime paradise. There is a conceptual site plan already prepared for the property. The entire site is also permitted as a dirt pit, which is a RARE find if you have interest in an income producing property! Priced well below market value, this property will not last long. Call Tom Smith TODAY!**



*Call The Land Man Today!*

**Tom Smith**, ALC®, BROKER  
Tom@TomSmithLand.com  
601.454.9397 cell | 601.898.2772 office



**TomSmithLandandHomes.com**

Information is believed to be accurate but not guaranteed.



# Lake Crossing

This master plan has been prepared for the purpose of illustrating the general concept of the development. The Developer reserves the right to alter or revise the sites and locations illustrated on this plan without notice. All measurements and acreages shown are approximate.



**DEVELOPERS... IF YOU ARE LOOKING FOR A TURN-KEY, READY FOR MARKET PROPERTY, LOOK NO FURTHER THAN THIS 80.5± ACRE TRACT IN MADISON COUNTY, MS. NOW IS YOUR CHANCE TO CREATE A WONDERFUL HOMEPLACE FOR SOMEONE!**



**TOM SMITH**, ALC®, BROKER  
 Tom@TomSmithLand.com  
 601.898.2772 office | 601.454.9397 cell



Expect More. Get More.

**TomSmithLandandHomes.com**

Information is believed to be accurate but not guaranteed.



**TOM SMITH**, ALC®, BROKER  
Tom@TomSmithLand.com  
601.898.2772 office | 601.454.9397 cell



**TomSmithLandandHomes.com**

Information is believed to be accurate but not guaranteed.

# Aerial Map



**[CLICK HERE FOR INTERACTIVE MAP](#)**



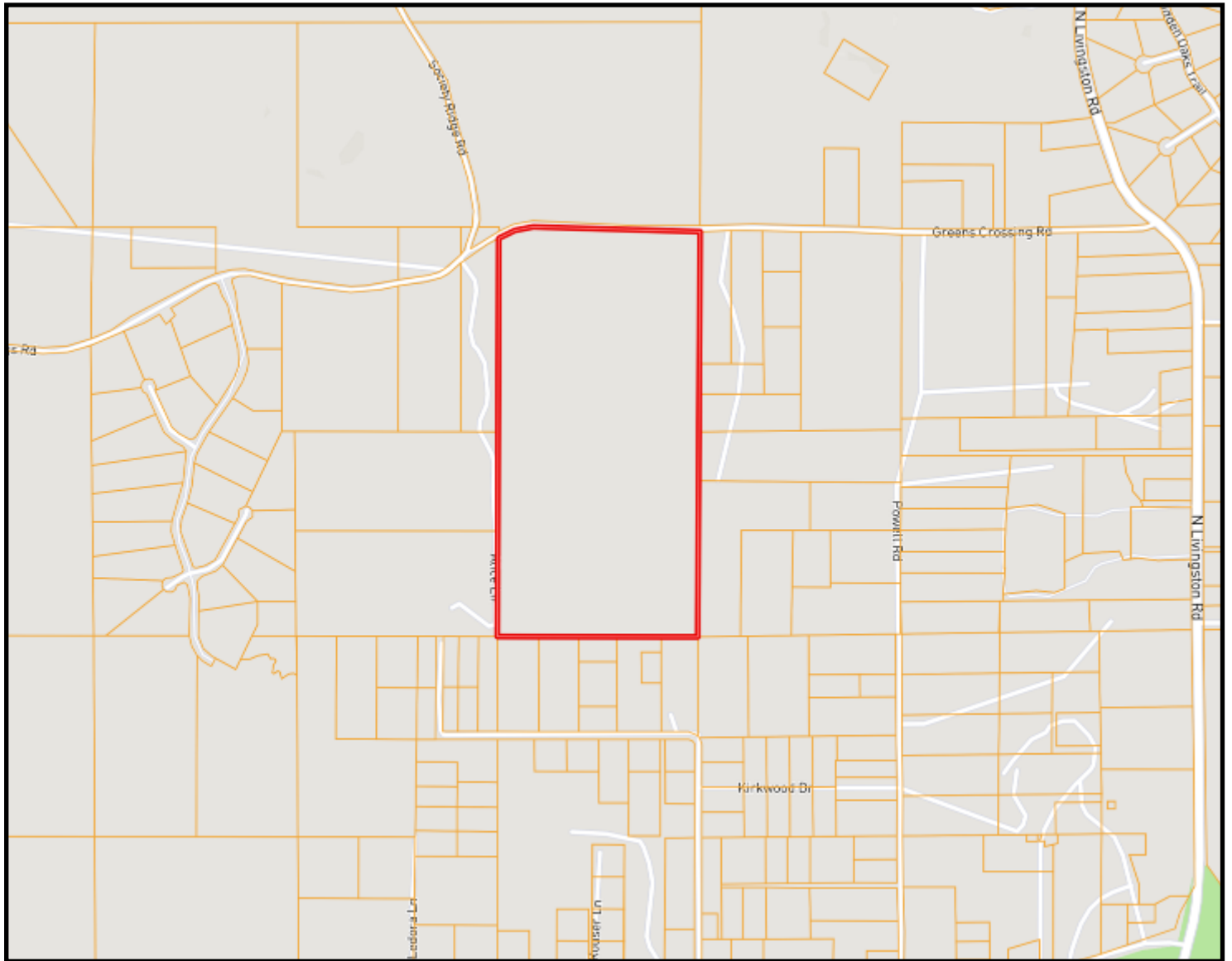
**TOM SMITH**, ALC®, BROKER  
Tom@TomSmithLand.com  
601.898.2772 office | 601.454.9397 cell



**TomSmithLandandHomes.com**

Information is believed to be accurate but not guaranteed.

# Ownership Map



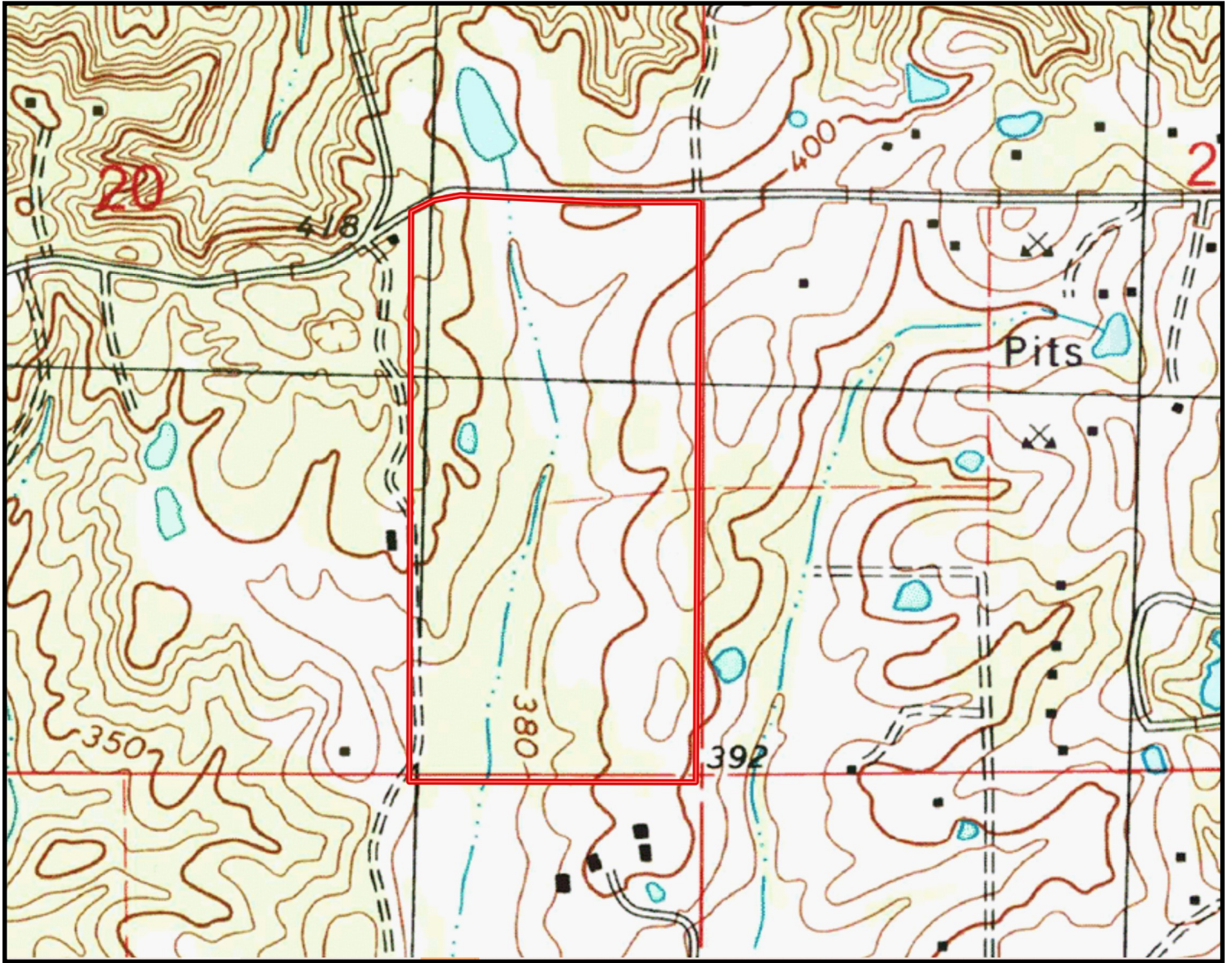
**TOM SMITH**, ALC®, BROKER  
Tom@TomSmithLand.com  
601.898.2772 **office** | 601.454.9397 **cell**



**TomSmithLandandHomes.com**

Information is believed to be accurate but not guaranteed.

# Topo Map



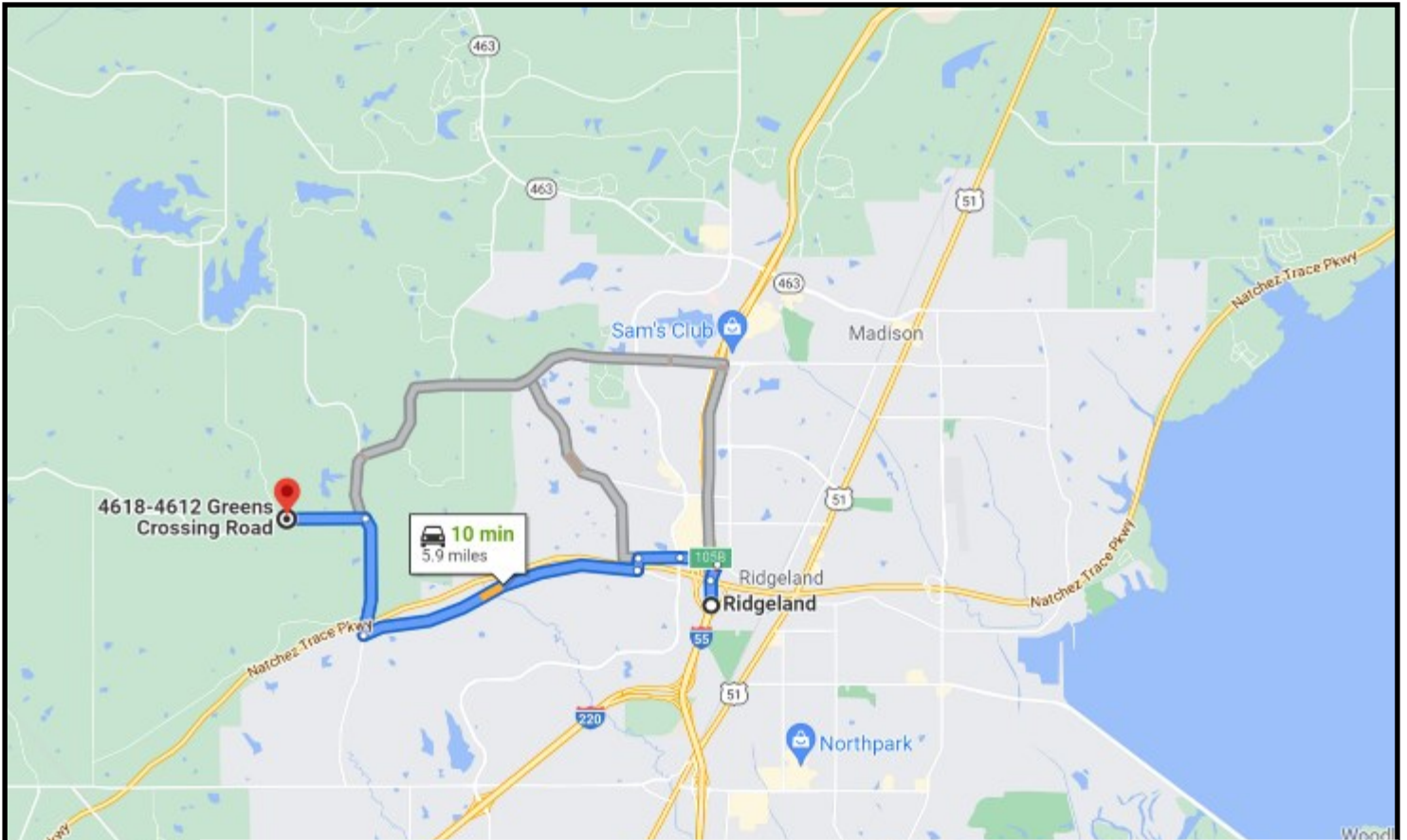
**TOM SMITH**, ALC®, BROKER  
Tom@TomSmithLand.com  
601.898.2772 office | 601.454.9397 cell



[TomSmithLandandHomes.com](http://TomSmithLandandHomes.com)

Information is believed to be accurate but not guaranteed.

# Directional Map



**Directions from I-55N in Ridgeland, MS: Take exit 105B for Ridgeland and turn left on Old Agency Road. At the traffic circle take the second exit and stay on Old Agency Road. Turn right on N Livingston Road and travel 1.1 miles. Turn left on Greens Crossing Road, travel 1.2 miles and the property will be on your left. [GOOGLE MAP LINK](#)**



*Call The Land Man Today!*



**Tom Smith**, ALC®, BROKER  
Tom@TomSmithLand.com  
601.454.9397 cell | 601.898.2772 office



**TomSmithLandandHomes.com**

Information is believed to be accurate but not guaranteed.