

19.6+/- ACRES WITH FRONTAGE ON I-59 JONES COUNTY, MS

REDUCED

\$125,000

Are you searching for commercial land in a PRIME location in Jones County, MS? This 19.6+/- acre tract is just North of exit 104 and the new Love's Travel Stop in Sandersville. The property offers frontage on I-59 and Claiborne Road and utilities are water and electricity nearby. For more details on this "priced to sell" tract, contact Jeff today!

Directions from I-59 Exit 104 in Sandersville, MS:

Travel west on Sharon-Sandersville Road and immediately turn right onto Claiborne Road. Drive 1 mile, and the property is on the right!

Call me today!

JEFF CUNDALL, REALTOR®

Jeff@TomSmithLand.com

601.898.2772 office | 601.331.7776 cell



Expect More. Get More.

TomSmithLandandHomes.com

Information is believed to be accurate but not guaranteed.



I-59 Frontage



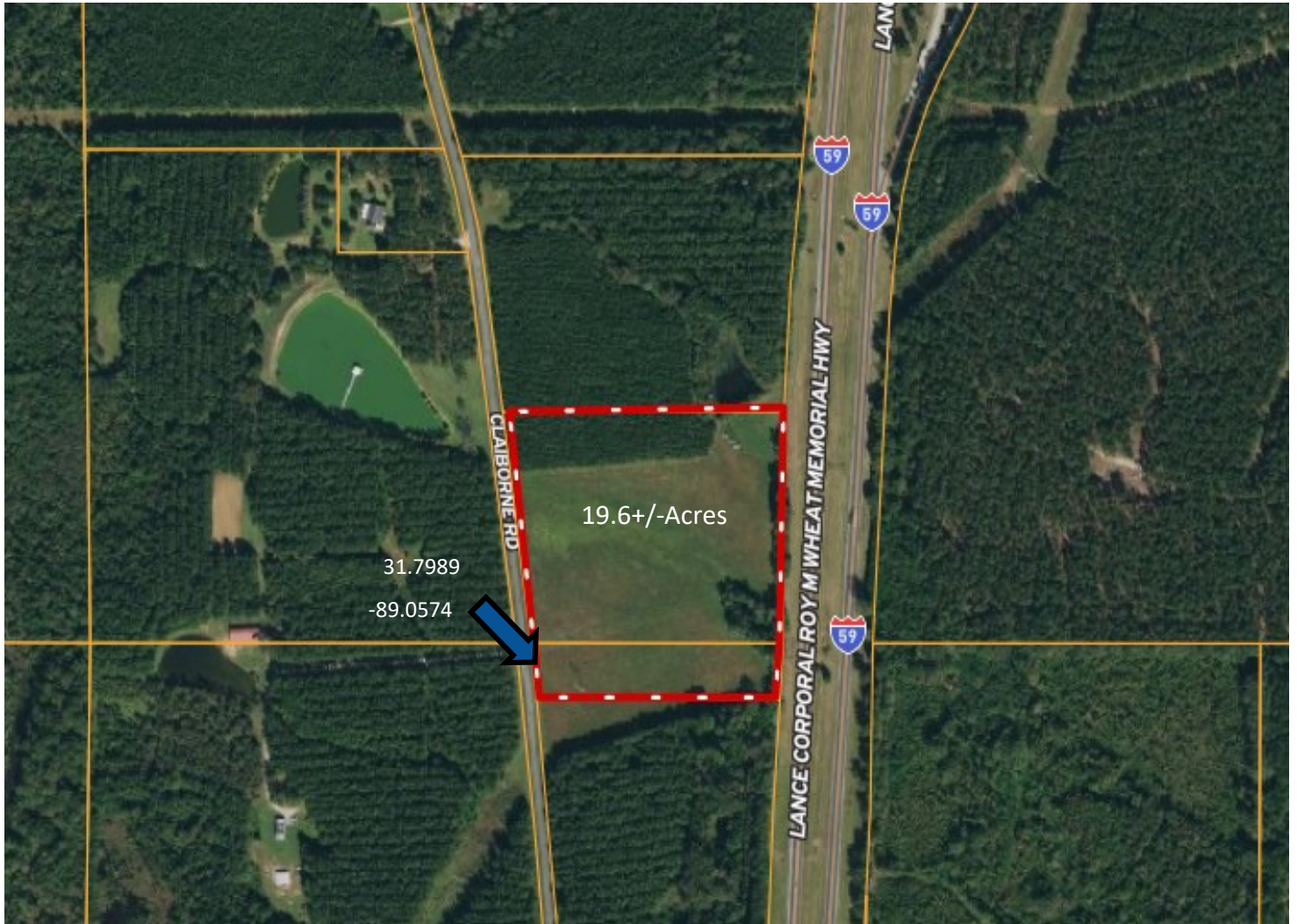
JEFF CUNDALL, REALTOR®
Jeff@TomSmithLand.com
601.898.2772 office | 601.331.7776 cell



TomSmithLandandHomes.com

Information is believed to be accurate but not guaranteed.

AERIAL MAP



[Click Here for Interactive Map](#)



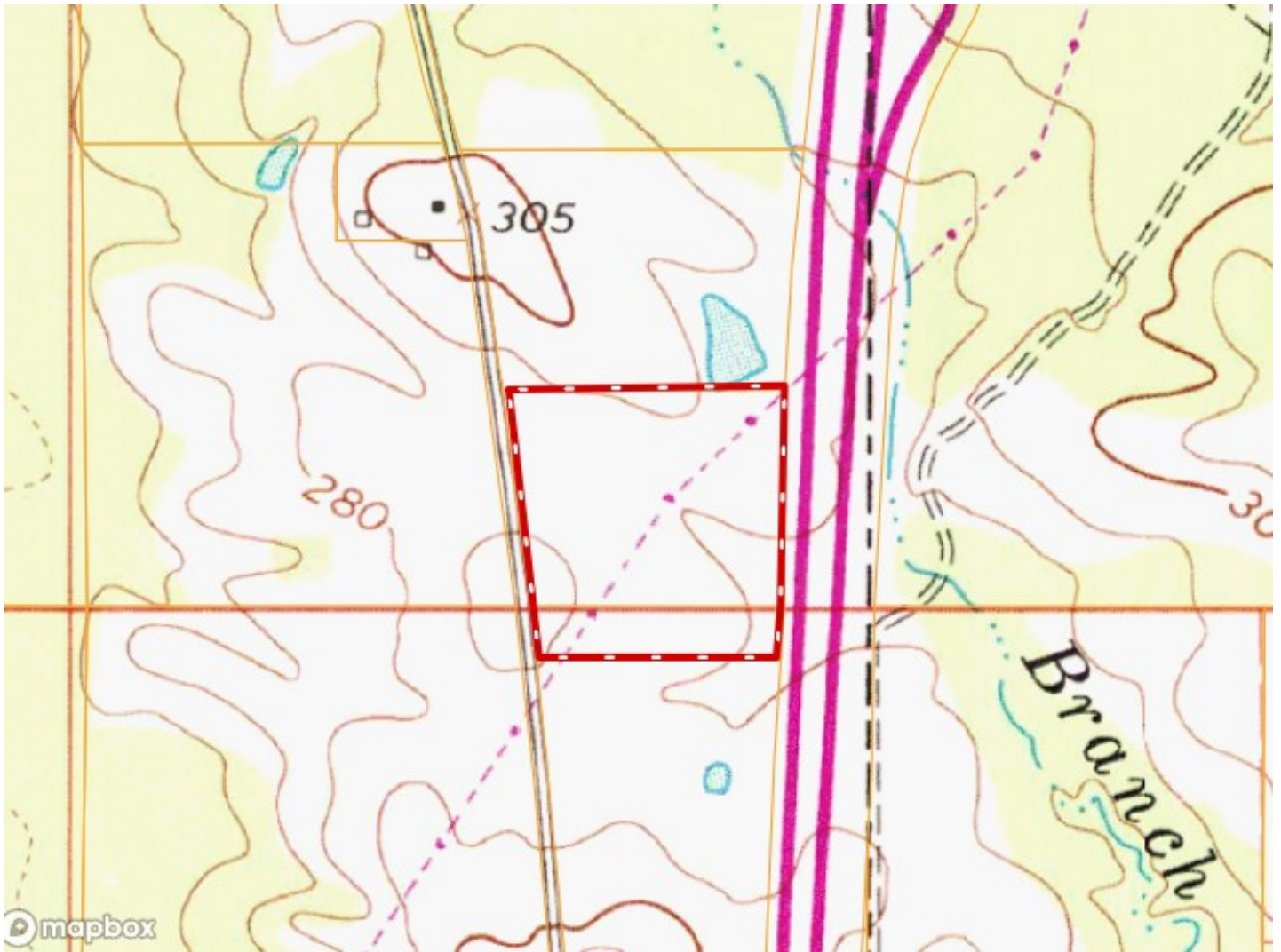
JEFF CUNDALL, REALTOR®
Jeff@TomSmithLand.com
601.898.2772 office | 601.331.7776 cell



TomSmithLandandHomes.com

Information is believed to be accurate but not guaranteed.

TOPO MAP



JEFF CUNDALL, REALTOR®
Jeff@TomSmithLand.com
601.898.2772 office | 601.331.7776 cell



TomSmithLandandHomes.com

Information is believed to be accurate but not guaranteed.

SOIL MAP



SOIL CODE	SOIL DESCRIPTION	ACRES	%	CPI	NCCPI	CAP
41B	Savannah loam, 2 to 5 percent slopes	18.1	100.0	0	49	2e
TOTALS		18.1(*)	100%	-	49.0	2.0

(*) Total acres may differ in the second decimal compared to the sum of each acreage soil. This is due to a round error because we only show the acres of each soil with two decimal.



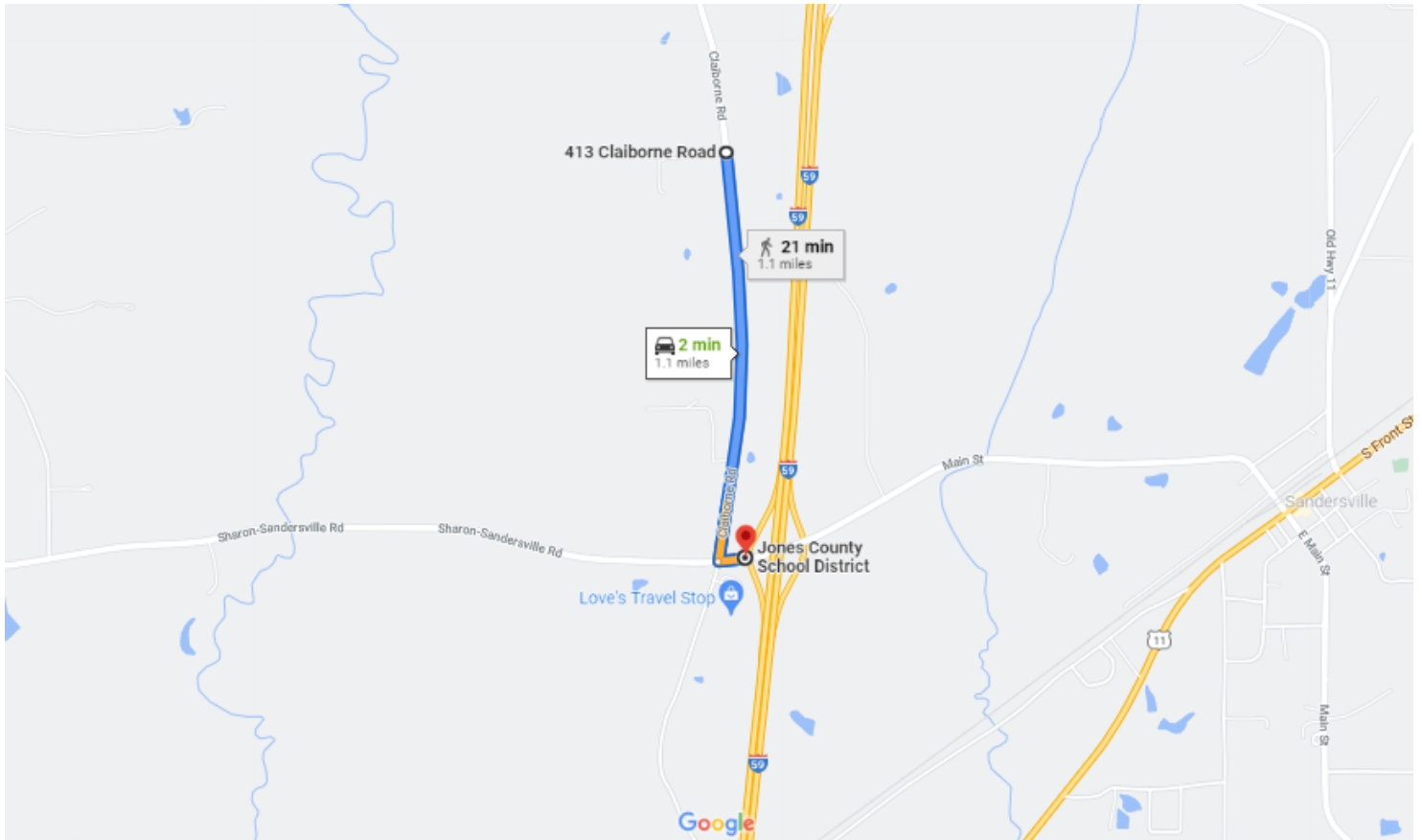
JEFF CUNDALL, REALTOR®
 Jeff@TomSmithLand.com
 601.898.2772 office | 601.331.7776 cell



TomSmithLandandHomes.com

Information is believed to be accurate but not guaranteed.

DIRECTIONAL MAP



Directions from I-59 Exit 104 in Sandersville, MS:

Travel west on Sharon-Sandersville Road and immediately turn right onto Claiborne Road.
Drive 1 mile, and the property is on the right!



JEFF CUNDALL, REALTOR®
Jeff@TomSmithLand.com
601.898.2772 office | 601.331.7776 cell



TomSmithLandandHomes.com

Information is believed to be accurate but not guaranteed.