

131+/- Acres in Webster County, MS Timber Investment/Recreational Tract



\$255,450

This 131+/- acre Webster County, MS property HAS IT ALL and is located approximately nine miles north of Eupora. The timber consists of mostly 20+/- year old plantation pine that has been first thinned. The established trails will make navigating this property a breeze. Some other features include direct access on Fason Road, several potential food plot locations, a mix of hardwood timber that traverses the two seasonal creeks, a small pond, a three-acre established food plot, and several camp/homesite locations. Turkeys were spotted upon initial inspection, along with multiple deer tracks along the interior trails. This property will make a great place for the avid outdoorsman and timber investor. Call Harper Day, for more information or to schedule a private showing!

Directions From Eupora, MS: Travel north on MS-9 for 4.1 miles. Turn right onto MS-50/East Avent Road and travel 2.8 miles. Turn left onto Clarkson Road and travel 2.3 miles. Turn right onto Fason Road and continue for 0.2 miles; the property will be on your left. [INTERACTIVE DIRECTIONAL MAP](#)



call me today!

HARPER DAY, REALTOR®

Harper@TomSmithLand.com

662.268.6333 **office** | 662.694.9751 **cell**



Expect More. Get More.

TomSmithLandandHomes.com

Information is believed to be accurate but not guaranteed.



call me today!

HARPER DAY, REALTOR®
 Harper@TomSmithLand.com
 662.268.6333 office | 662.694.9751 cell



TomSmithLandandHomes.com

Information is believed to be accurate but not guaranteed.



call me today!

HARPER DAY, REALTOR®

Harper@TomSmithLand.com

662.268.6333 **office** | 662.694.9751 **cell**



Expect More. Get More.

TomSmithLandandHomes.com

Information is believed to be accurate but not guaranteed.



call me today!

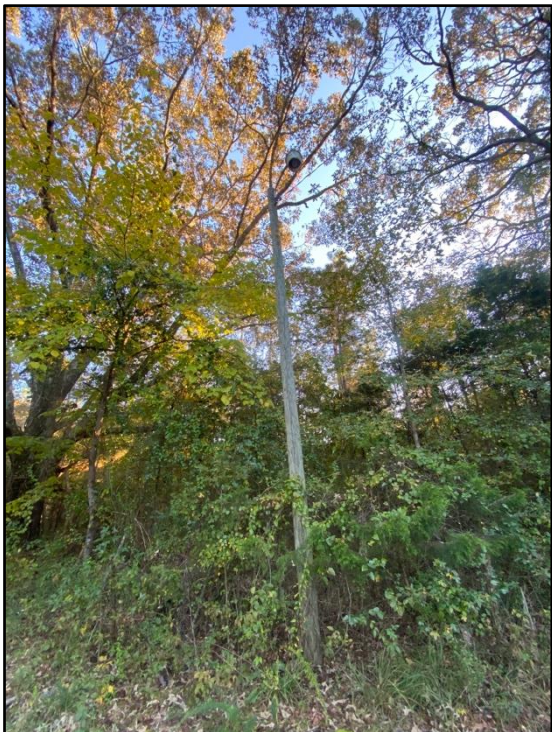
HARPER DAY, REALTOR®
Harper@TomSmithLand.com
662.268.6333 **office** | 662.694.9751 **cell**



Expect More. Get More.

TomSmithLandandHomes.com

Information is believed to be accurate but not guaranteed.



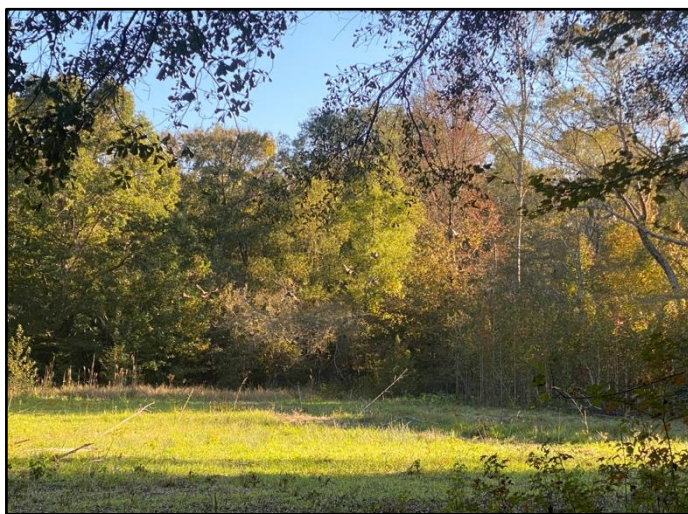
call me today!

HARPER DAY, REALTOR®
 Harper@TomSmithLand.com
 662.268.6333 **office** | 662.694.9751 **cell**



TomSmithLandandHomes.com

Information is believed to be accurate but not guaranteed.



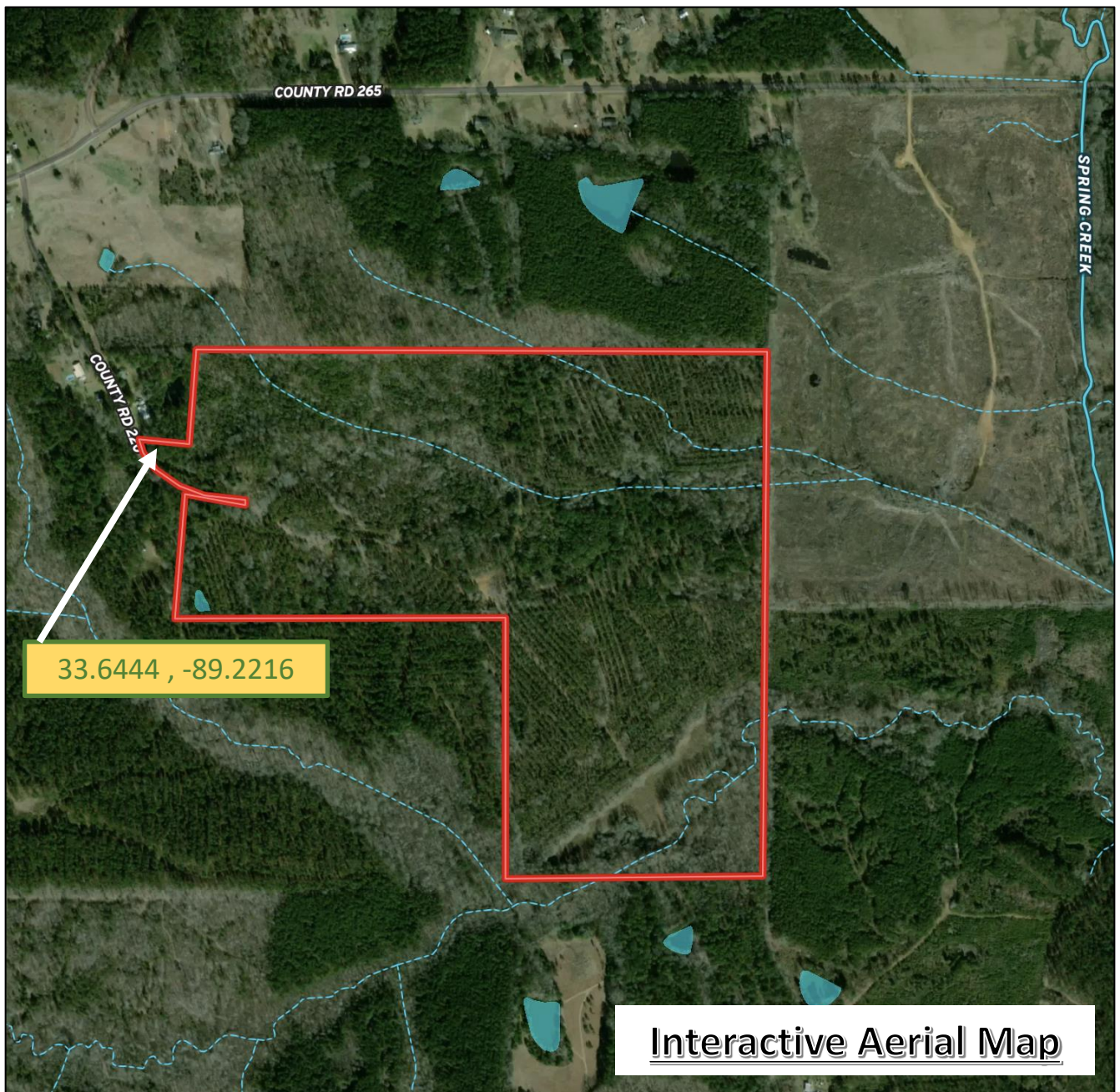
call me today!

HARPER DAY, REALTOR®
Harper@TomSmithLand.com
662.268.6333 **office** | 662.694.9751 **cell**



TomSmithLandandHomes.com

Information is believed to be accurate but not guaranteed.



Interactive Aerial Map



call me today!

HARPER DAY, REALTOR®

Harper@TomSmithLand.com

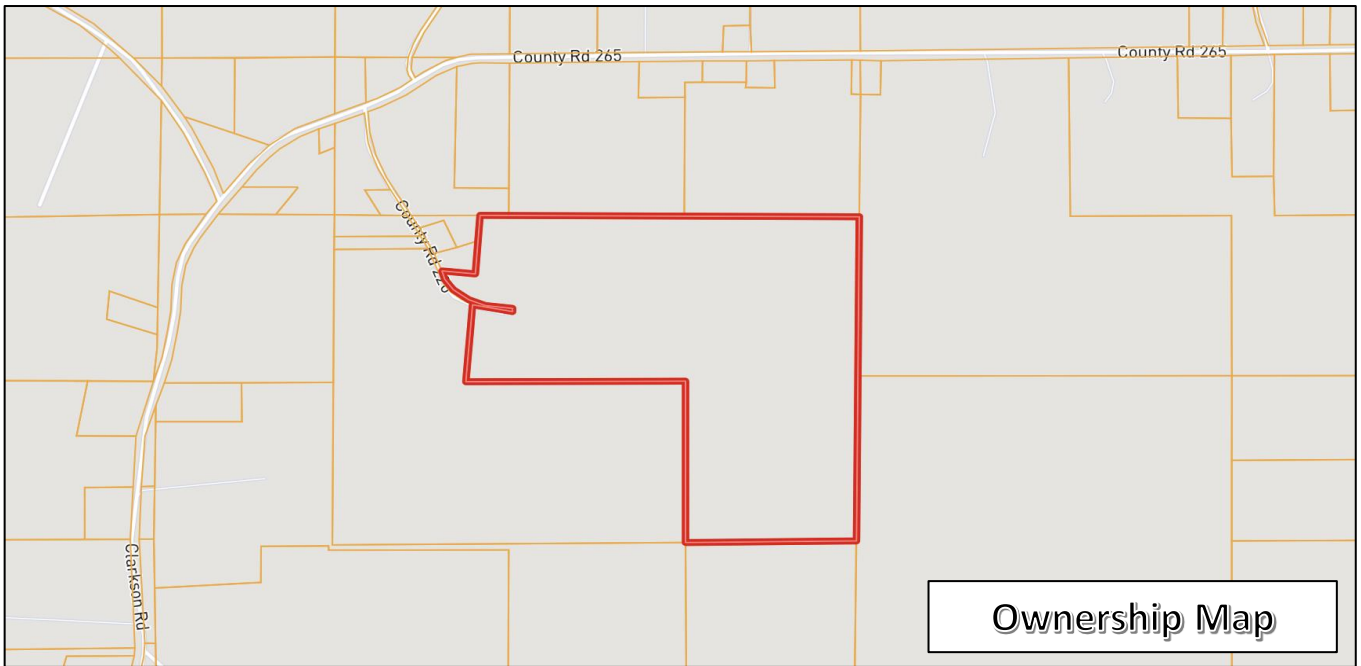
662.268.6333 **office** | 662.694.9751 **cell**



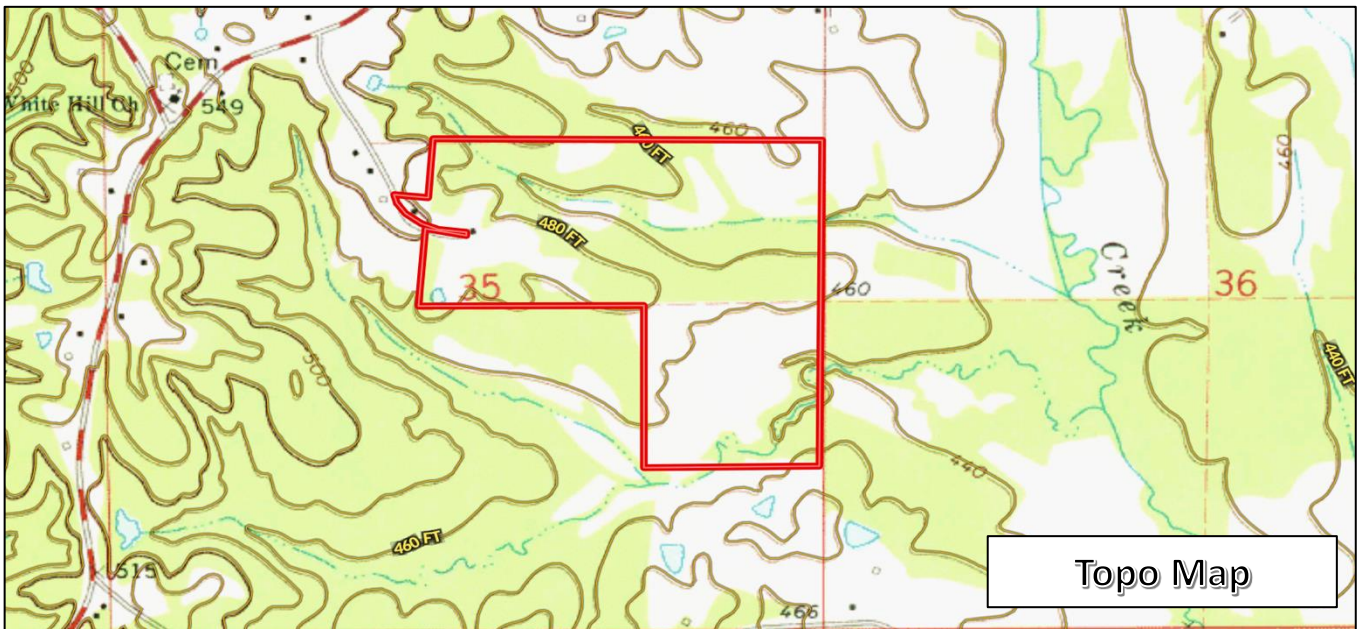
Expect More. Get More.

TomSmithLandandHomes.com

Information is believed to be accurate but not guaranteed.



Ownership Map



Topo Map



call me today!

HARPER DAY, REALTOR®

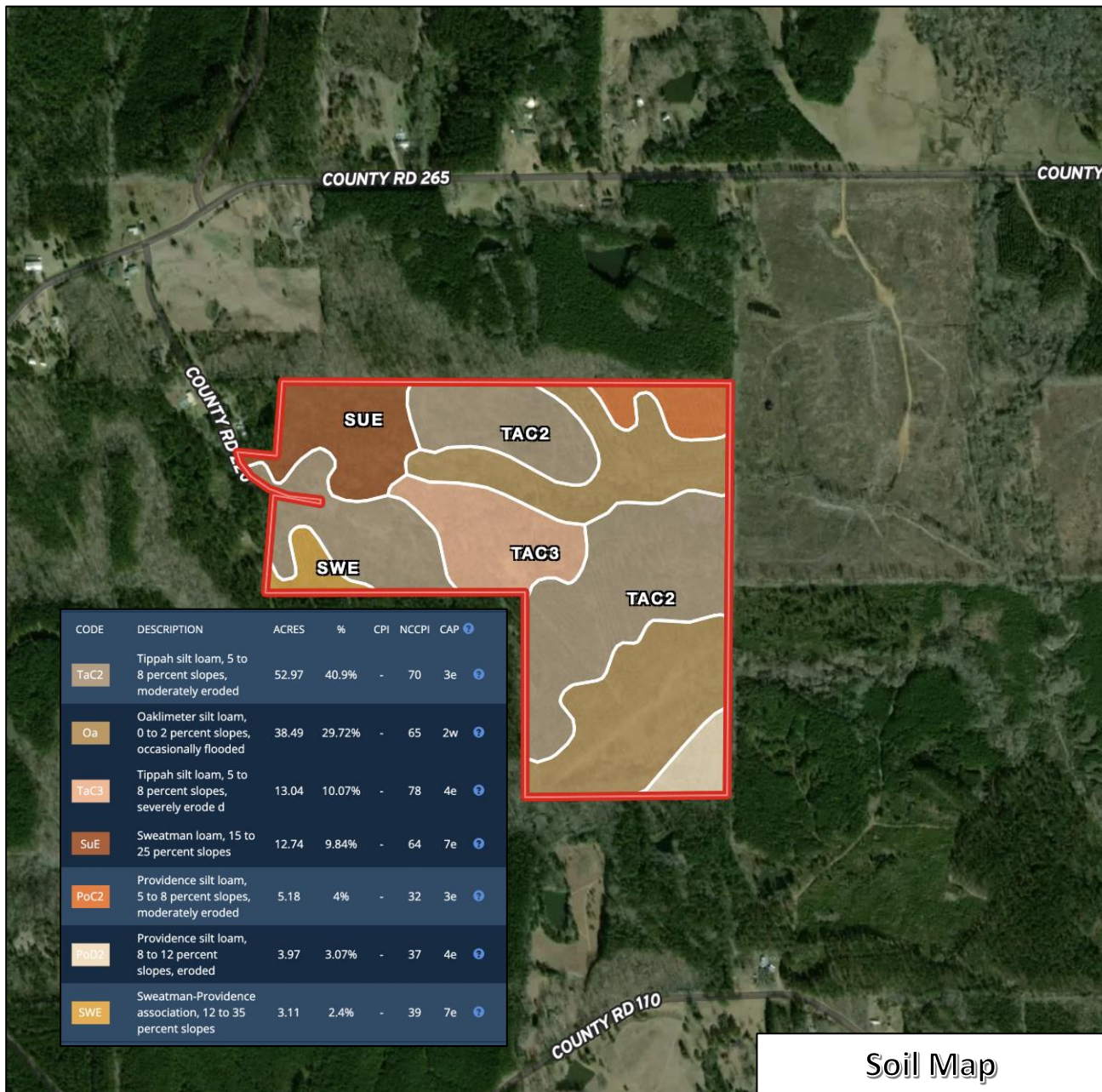
Harper@TomSmithLand.com

662.268.6333 office | 662.694.9751 cell



TomSmithLandandHomes.com

Information is believed to be accurate but not guaranteed.



Soil Map



call me today!

HARPER DAY, REALTOR®

Harper@TomSmithLand.com

662.268.6333 office | 662.694.9751 cell

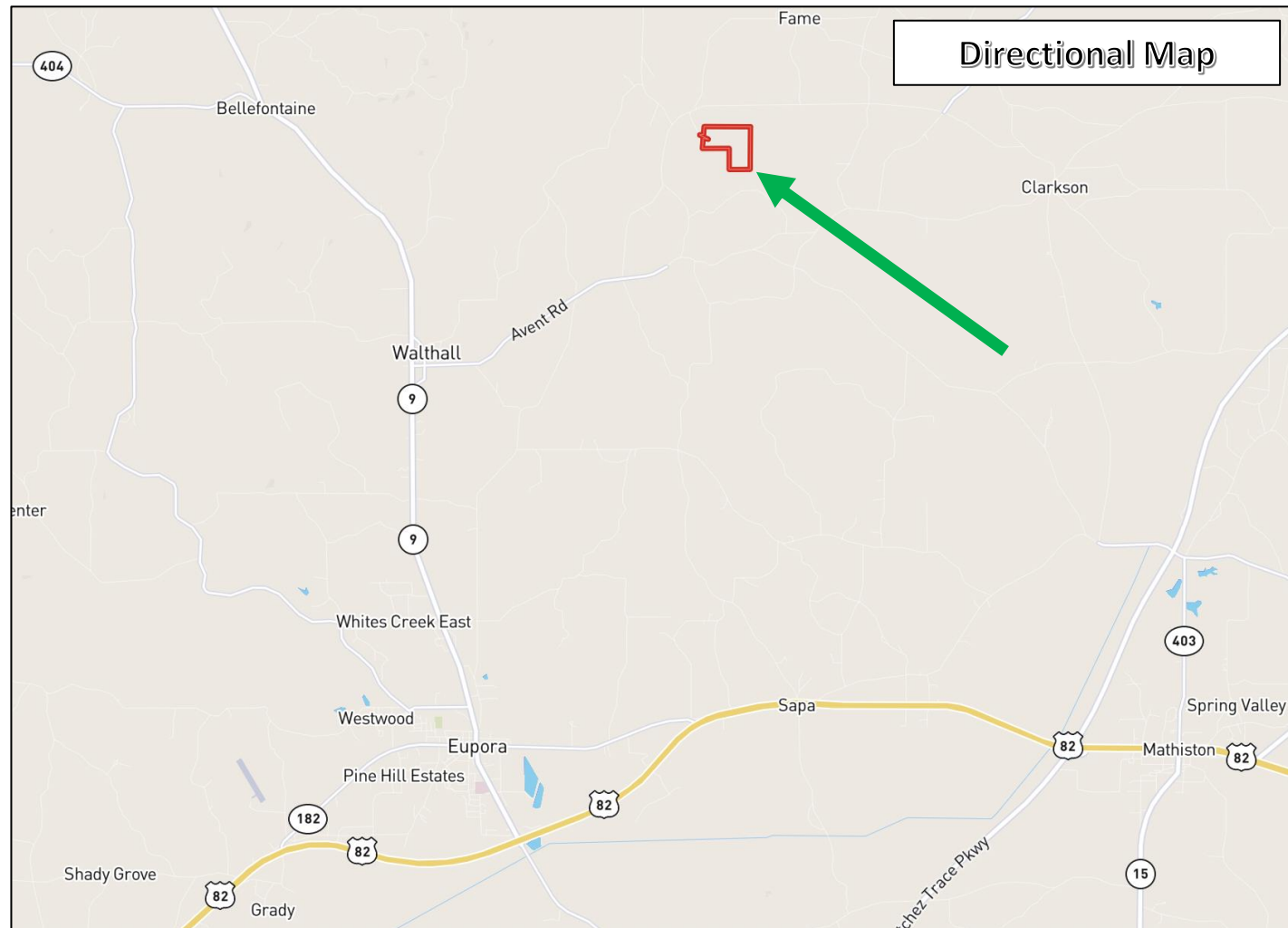


Expect More. Get More.

TomSmithLandandHomes.com

Information is believed to be accurate but not guaranteed.

Directional Map



Directions From Eupora, MS: Travel north on MS-9 for 4.1 miles. Turn right onto MS-50/East Avent Road and travel 2.8 miles. Turn left onto Clarkson Road and travel 2.3 miles. Turn right onto Fason Road and continue for 0.2 miles; the property will be on your left. [INTERACTIVE DIRECTIONAL MAP](#)

call me today!

LandReport
2010-2021
AMERICA'S
BEST
BROKERAGES

HARPER DAY, REALTOR®

Harper@TomSmithLand.com

662.268.6333 office | 662.694.9751 cell

**Tom
Smith
LAND AND
HOMES**

Expect More. Get More.

TomSmithLandandHomes.com

Information is believed to be accurate but not guaranteed.