

RARE FIND

40± ACRES IN HINDS COUNTY, MS



\$685,000

This 40± acre tract is conveniently located near the intersection of Green Gables Road and Interstate 55 in Hinds County, MS. The property has almost ¼ mile frontage on I-55 South Frontage Road and Old Highway 51 North. Once you turn in the drive, you are welcomed by the towering crepe myrtles leading you to the cabin and barn. The possibilities are endless, the property was recently zoned commercial and is located within the Terry City limits with water and sewer available. There is a 1,400 SF cypress cabin and a 120'X80' 14-stall barn with an impressive 1,800 SF first-class, two-story living quarters. With over 35,000 vehicles passing daily, and being 2 minutes from an exit, this property is truly one of a kind! Call Tom Smith today!



Call The Land Man Today!

Tom Smith, ALC®, BROKER
Tom@TomSmithLand.com
601.454.9397 **cell** | 601.898.2772 **office**



TomSmithLandandHomes.com

Information is believed to be accurate but not guaranteed.



TOM SMITH, ALC®, BROKER
 Tom@TomSmithLand.com
 601.898.2772 **office** | 601.454.9397 **cell**



TomSmithLandandHomes.com

Information is believed to be accurate but not guaranteed.



TOM SMITH, ALC®, BROKER
 Tom@TomSmithLand.com
 601.898.2772 **office** | 601.454.9397 **cell**



TomSmithLandandHomes.com

Information is believed to be accurate but not guaranteed.



TOM SMITH, ALC®, BROKER
 Tom@TomSmithLand.com
 601.898.2772 **office** | 601.454.9397 **cell**



TomSmithLandandHomes.com

Information is believed to be accurate but not guaranteed.



TOM SMITH, ALC®, BROKER
 Tom@TomSmithLand.com
 601.898.2772 **office** | 601.454.9397 **cell**



TomSmithLandandHomes.com

Information is believed to be accurate but not guaranteed.

AERIAL MAP



[CLICK HERE FOR AN INTERACTIVE MAP](#)



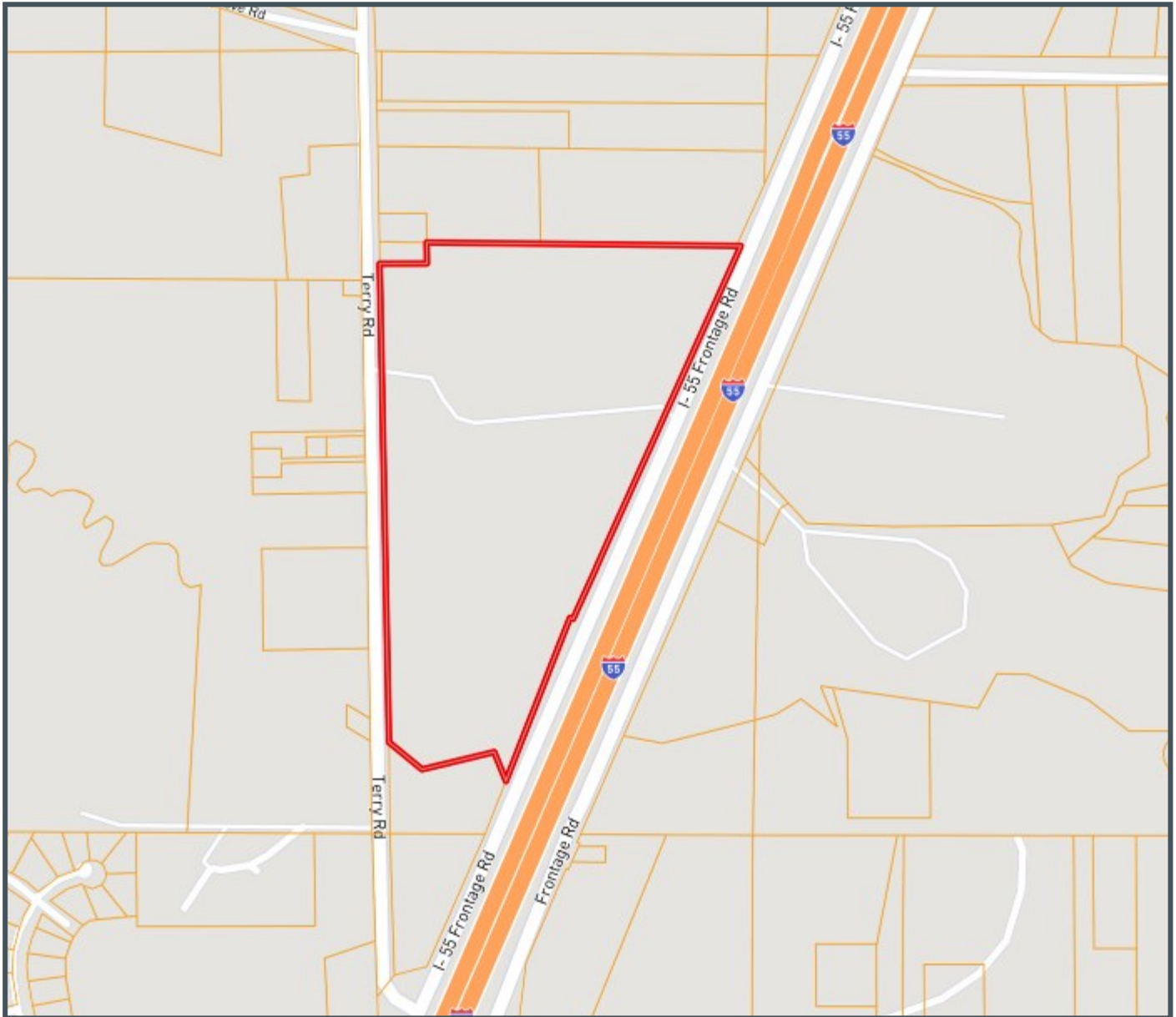
TOM SMITH, ALC®, BROKER
Tom@TomSmithLand.com
601.898.2772 **office** | 601.454.9397 **cell**



TomSmithLandandHomes.com

Information is believed to be accurate but not guaranteed.

OWNERSHIP MAP



TOM SMITH, ALC®, BROKER
Tom@TomSmithLand.com
601.898.2772 **office** | 601.454.9397 **cell**



TomSmithLandandHomes.com

Information is believed to be accurate but not guaranteed.

TOPO MAP

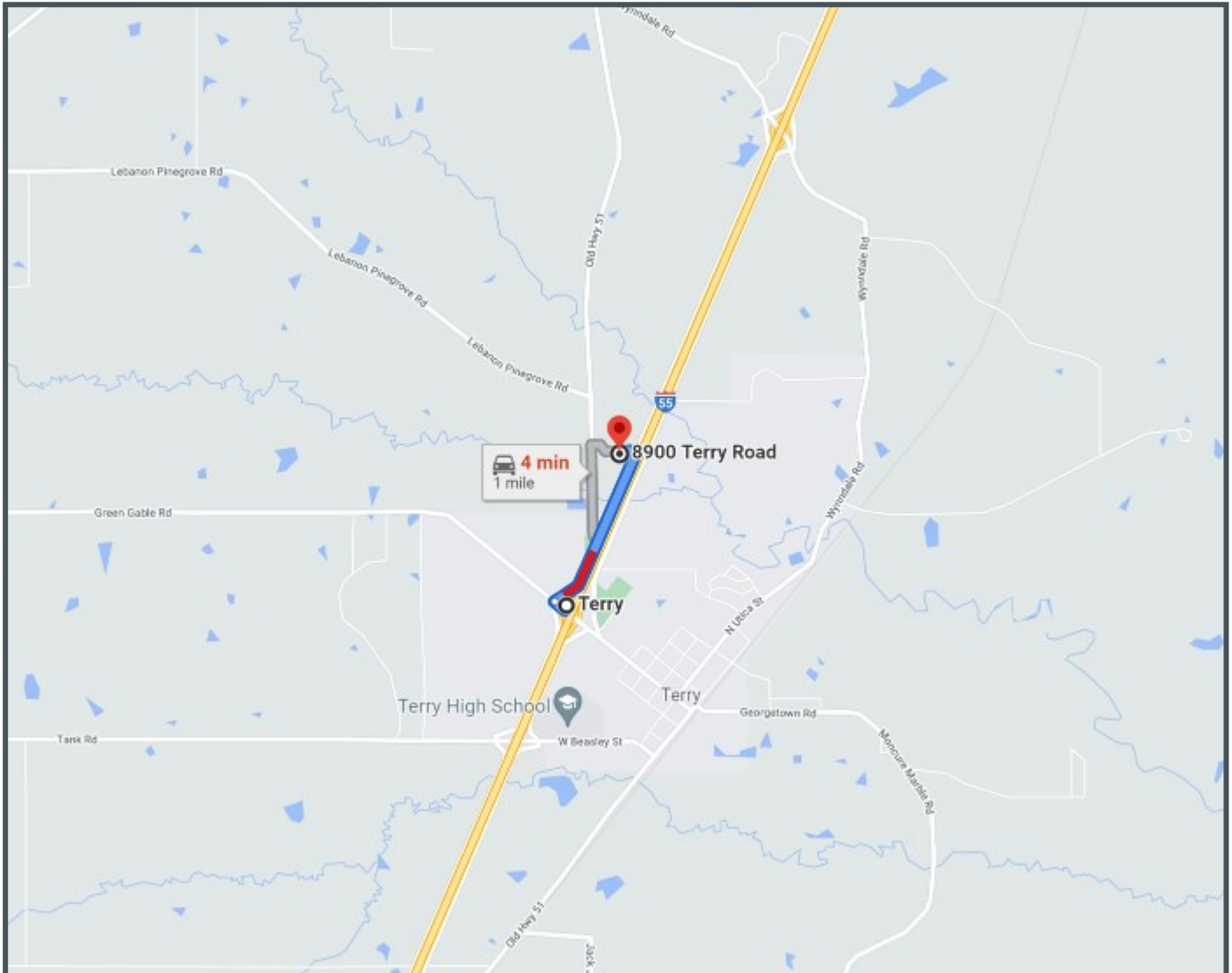


TOM SMITH, ALC®, BROKER
Tom@TomSmithLand.com
601.898.2772 **office** | 601.454.9397 **cell**

TomSmithLandandHomes.com

Information is believed to be accurate but not guaranteed.

DIRECTIONAL MAP



DIRECTIONS: FROM I-55 SOUTH IN TERRY, MS TAKE THE TERRY EXIT AND TURN RIGHT ON GREEN GABLE RD. TURN RIGHT ON THE FRONTAGE ROAD AND TRAVEL .8 OF A MILE. TURN LEFT ON TERRY ROAD, THE ENTRANCE TO THE PROPERTY WILL BE ON YOUR RIGHT. [GOOGLE MAP LINK](#)



Call The Land Man Today!

Tom Smith, ALC®, BROKER
Tom@TomSmithLand.com
601.454.9397 **cell** | 601.898.2772 **office**



TomSmithLandandHomes.com

Information is believed to be accurate but not guaranteed.