

RECREATIONAL PLAYGROUND

179± ACRES IN MONTGOMERY COUNTY, MS



\$1,450/ACRE

Welcome to your new recreational playground in Montgomery County, MS! This 179 +/- acre tract is located just over 8 minutes from Kilmichael, MS. Get ready to enjoy the outdoors while watching your investment grow. This tract would make a great cabin or homeplace in the woods with power available along the road; a well and septic system are not established. The interior road system will lead you to any of the wildlife plots that are ready and waiting on your deer stand. Call Tom for your private showing today!

DIRECTIONS FROM I-55 IN VAIDEN, MS: Take exit 174 for Vaiden, MS and turn right on Highway 35. Travel 2.2 miles and turn left onto Highway 51. Turn right on E Herring Street then continue onto County Rd 430/Greensboro Rd and travel 7 miles. Turn right on County Rd 407 and travel 1.5 miles. Turn left onto Vaiden-Kilmichael Rd. and take the immediate left onto Lower Bethlehem Rd and travel 2.9 miles. Turn right onto Lower Milligan Springs Rd. and travel .8 miles. Turn right onto Kindred Rd, the entrance to the property will be on your left. [GOOGLE MAP LINK](#)



Call The Land Man Today!

Tom Smith, ALC®, BROKER
Tom@TomSmithLand.com
601.454.9397 **cell** | 601.898.2772 **office**



Expect More. Get More.

TomSmithLandandHomes.com

Information is believed to be accurate but not guaranteed.

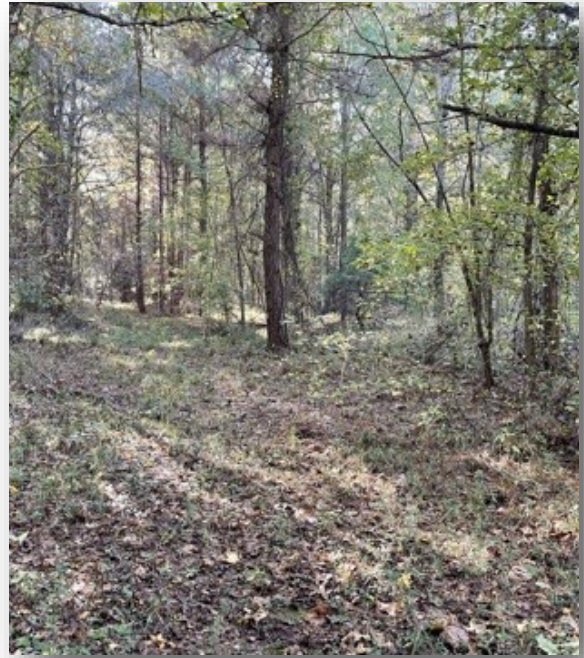


TOM SMITH, ALC®, BROKER
 Tom@TomSmithLand.com
 601.898.2772 **office** | 601.454.9397 **cell**



TomSmithLandandHomes.com

Information is believed to be accurate but not guaranteed.



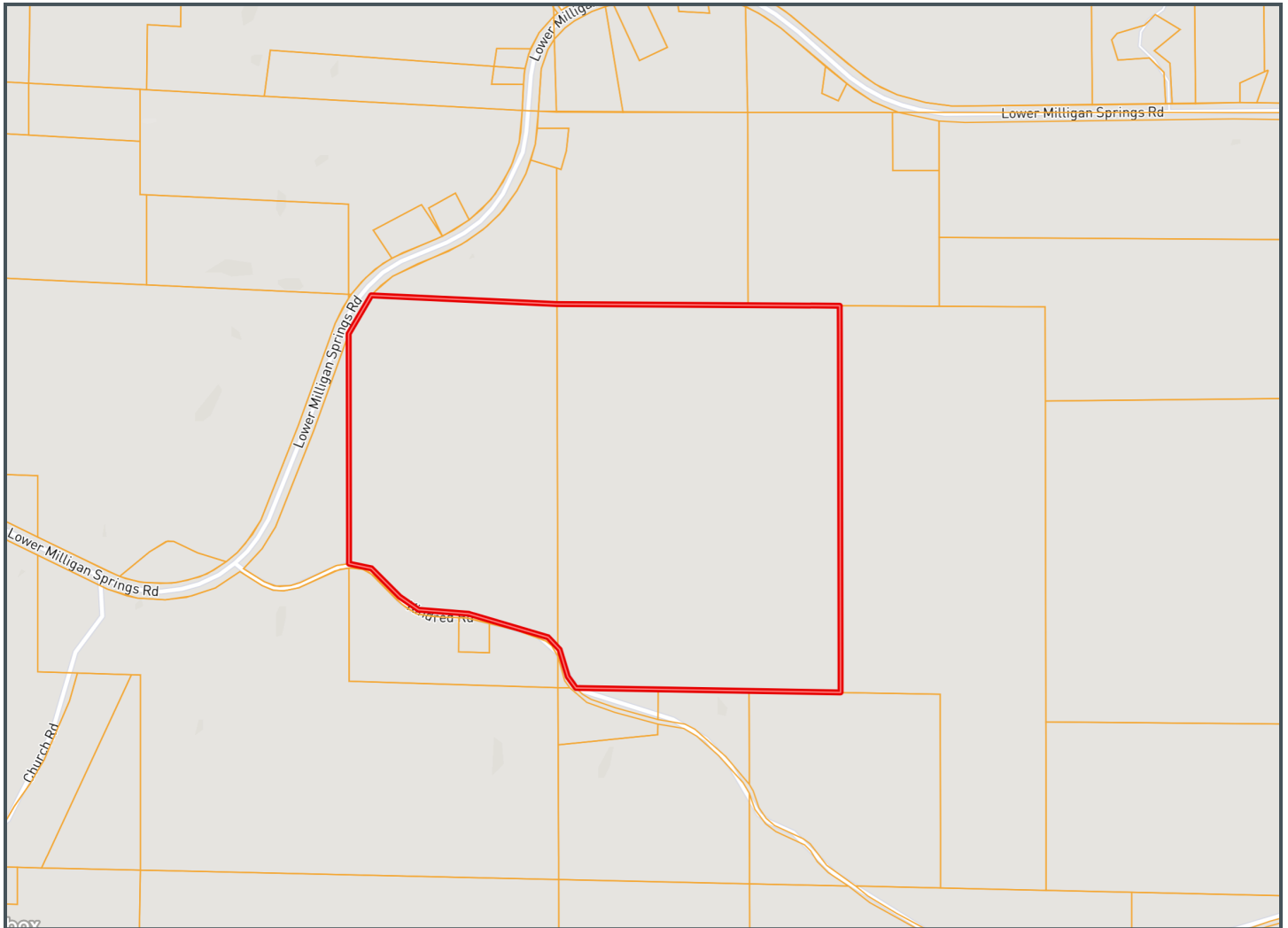
TOM SMITH, ALC®, BROKER
Tom@TomSmithLand.com
601.898.2772 **office** | 601.454.9397 **cell**



TomSmithLandandHomes.com

Information is believed to be accurate but not guaranteed.

OWNERSHIP MAP



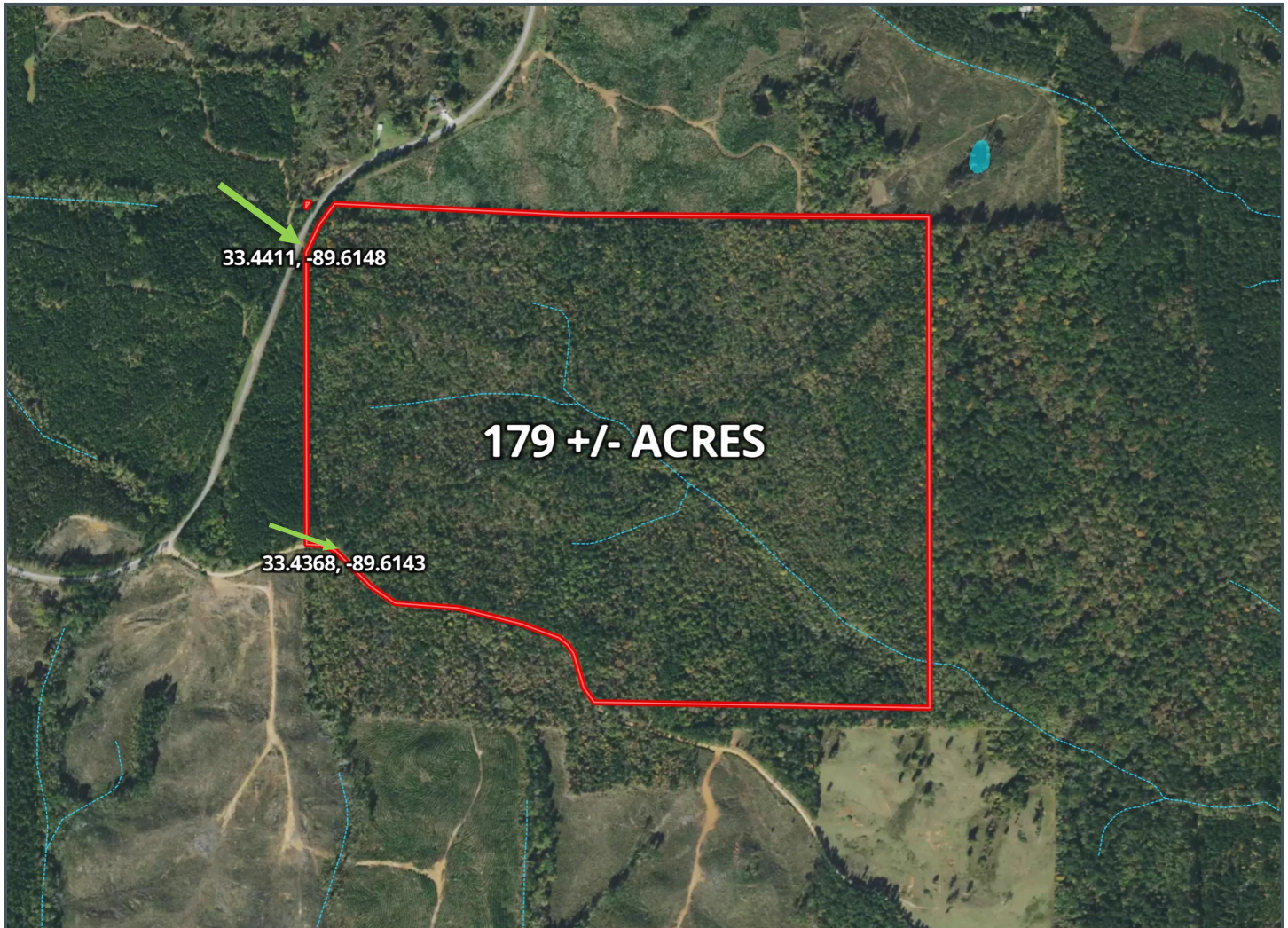
TOM SMITH, ALC®, BROKER
Tom@TomSmithLand.com
601.898.2772 **office** | 601.454.9397 **cell**



TomSmithLandandHomes.com

Information is believed to be accurate but not guaranteed.

AERIAL MAP



[CLICK HERE](#) FOR AN INTERACTIVE MAP



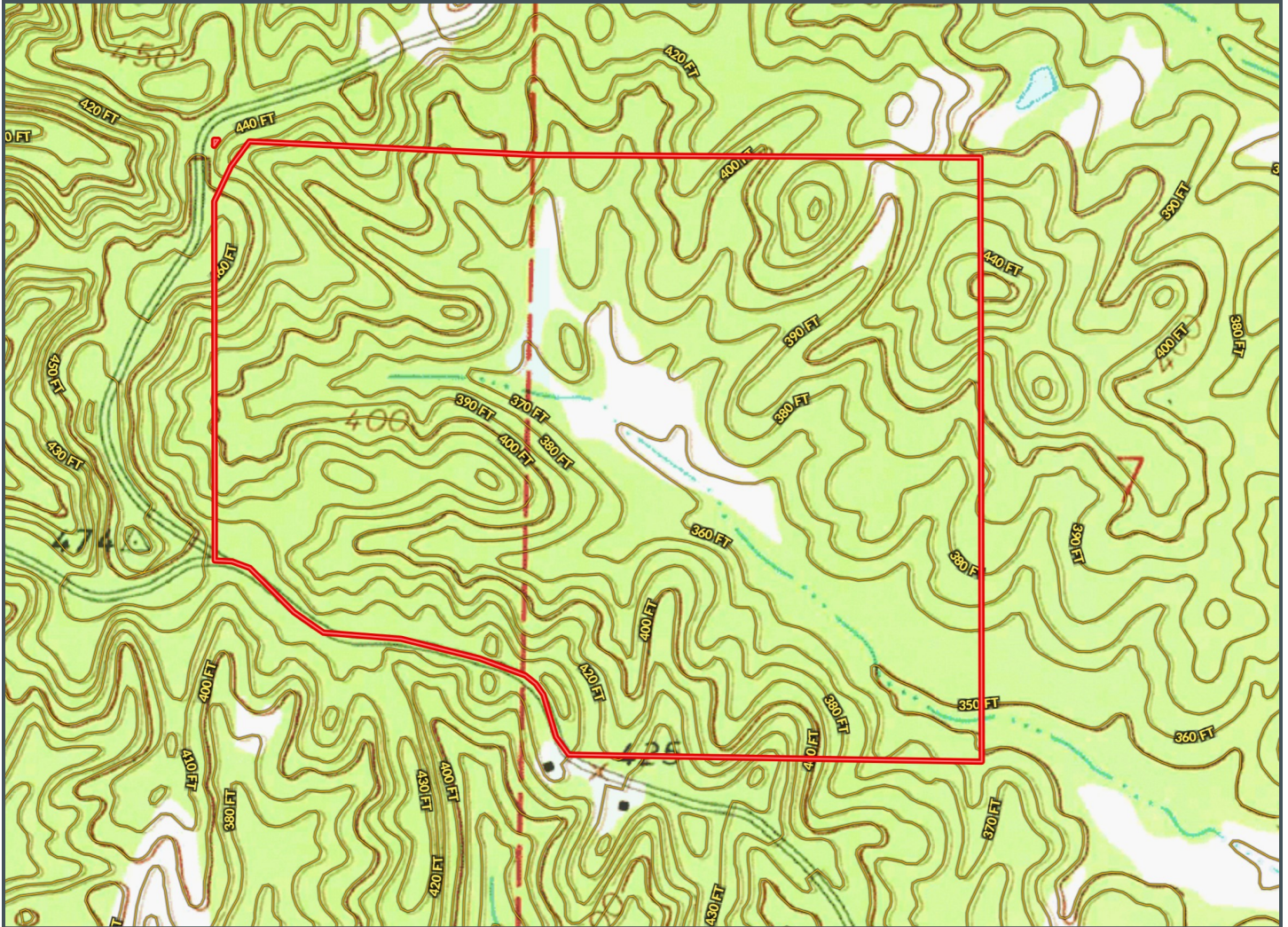
TOM SMITH, ALC®, BROKER
Tom@TomSmithLand.com
601.898.2772 **office** | 601.454.9397 **cell**



TomSmithLandandHomes.com

Information is believed to be accurate but not guaranteed.

TOPO MAP



TOM SMITH, ALC®, BROKER
Tom@TomSmithLand.com
601.898.2772 **office** | 601.454.9397 **cell**

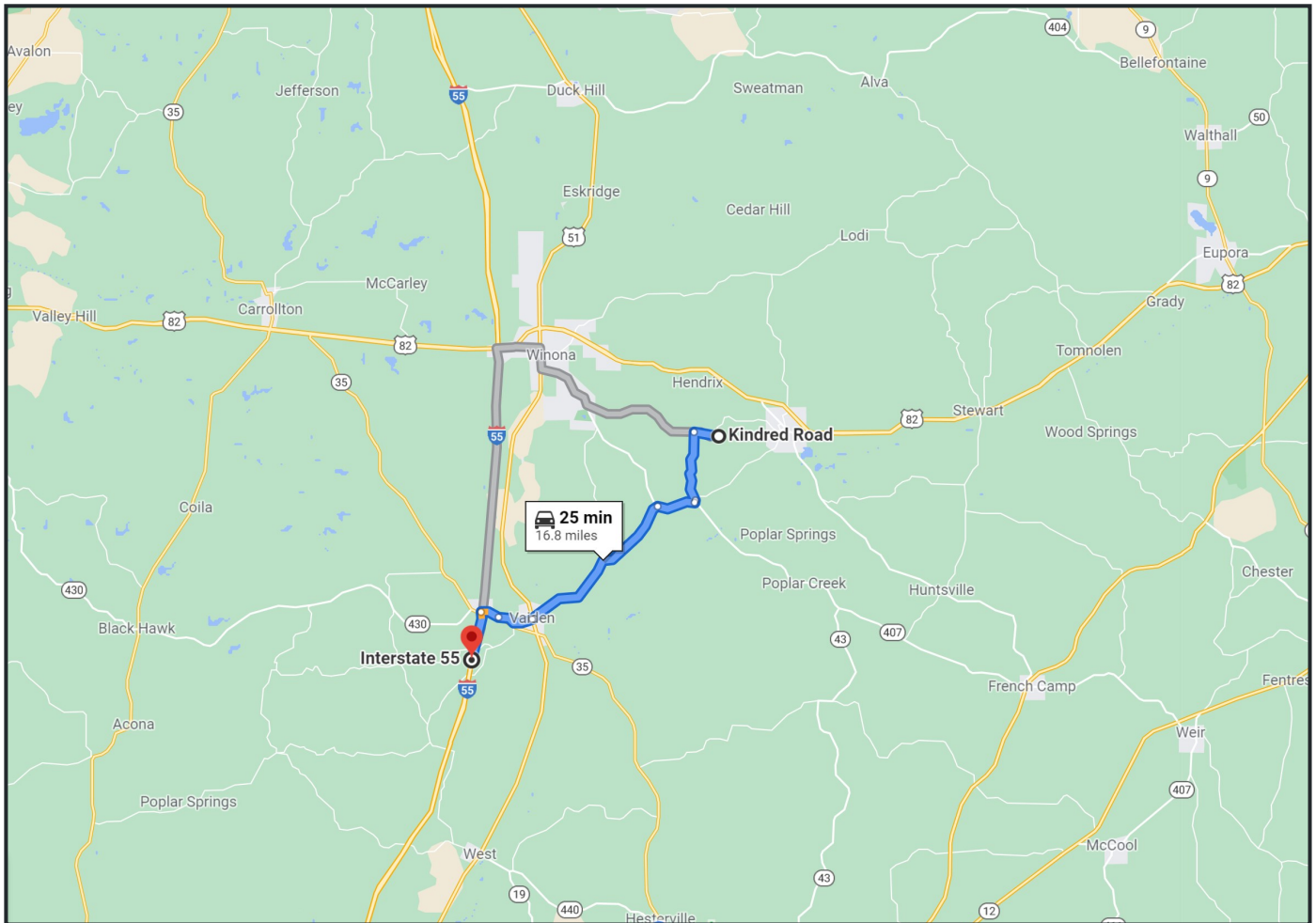


Expect More. Get More.

TomSmithLandandHomes.com

Information is believed to be accurate but not guaranteed.

DIRECTIONAL MAP



DIRECTIONS FROM I-55 IN VAIDEN, MS: Take exit 174 for Vaiden, MS and turn right on Highway 35. Travel 2.2 miles and turn left onto Highway 51. Turn right on E Herring Street then continue onto County Rd 430/Greensboro Rd and travel 7 miles. Turn right on County Rd 407 and travel 1.5 miles. Turn left onto Vaiden-Kilmichael Rd. and take the immediate left onto Lower Bethlehem Rd and travel 2.9 miles. Turn right onto Lower Milligan Springs Rd. and travel .8 miles. Turn right onto Kindred Rd, the entrance to the property will be on your left. [GOOGLE MAP LINK](#)



Call The Land Man Today!

Tom Smith, ALC®, BROKER
Tom@TomSmithLand.com
601.454.9397 **cell** | 601.898.2772 **office**



TomSmithLandandHomes.com

Information is believed to be accurate but not guaranteed.