

INVESTMENT OPPORTUNITY IN PIKE COUNTY, MS



\$32,000

1119 Summit Holmesville Rd, McComb MS

EXCELLENT INVESTMENT PROPERTY IN THE NORTH PIKE SCHOOL DISTRICT! Come take a look at this three bedroom, two bath home situated on 1± acre in McComb, MS. Much of the property is wooded. A 30x40 shop is on site. Contact Tara Walker Smith for a private showing!

Directions from Exit 20A off I-55 in McComb, MS: Travel toward Summit and in .3 miles continue on Lawrence Street. Continue straight on Hershal Grady Memorial Hwy and travel .4 miles. Turn right onto Walnut Street and travel .3 miles. Turn left onto Robb Street and travel .3 miles, then turn right on Cedar St. In .6 miles continue onto Summit Holmesville R. The property will be on the left in .6 miles: 1119 Summit Holmesville Road.



Call me today!

TARA WALKER SMITH, REALTOR®
Tara@TomSmithHomes.com
601.990.5070 **office** | 601.407.4315 **cell**



TomSmithLandandHomes.com

Information is believed to be accurate but not guaranteed.



TARA WALKER SMITH, REALTOR®
 Tara@TomSmithHomes.com
 601.990.5070 office | 601.407.4315 cell



TomSmithLandandHomes.com

Information is believed to be accurate but not guaranteed.

Aerial Map



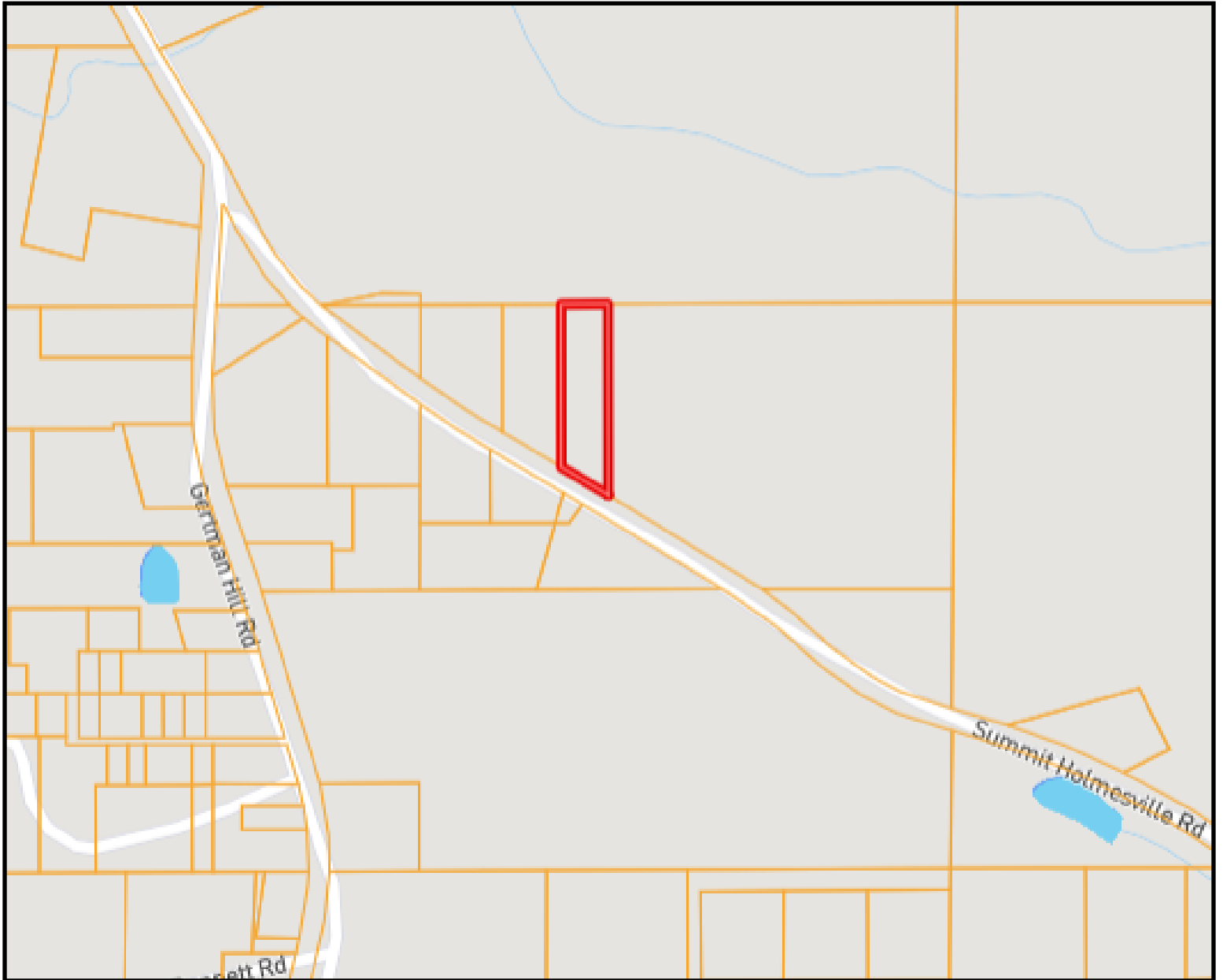
TARA WALKER SMITH, REALTOR®
Tara@TomSmithHomes.com
601.990.5070 **office** | 601.407.4315 **cell**



TomSmithLandandHomes.com

Information is believed to be accurate but not guaranteed.

Ownership Map



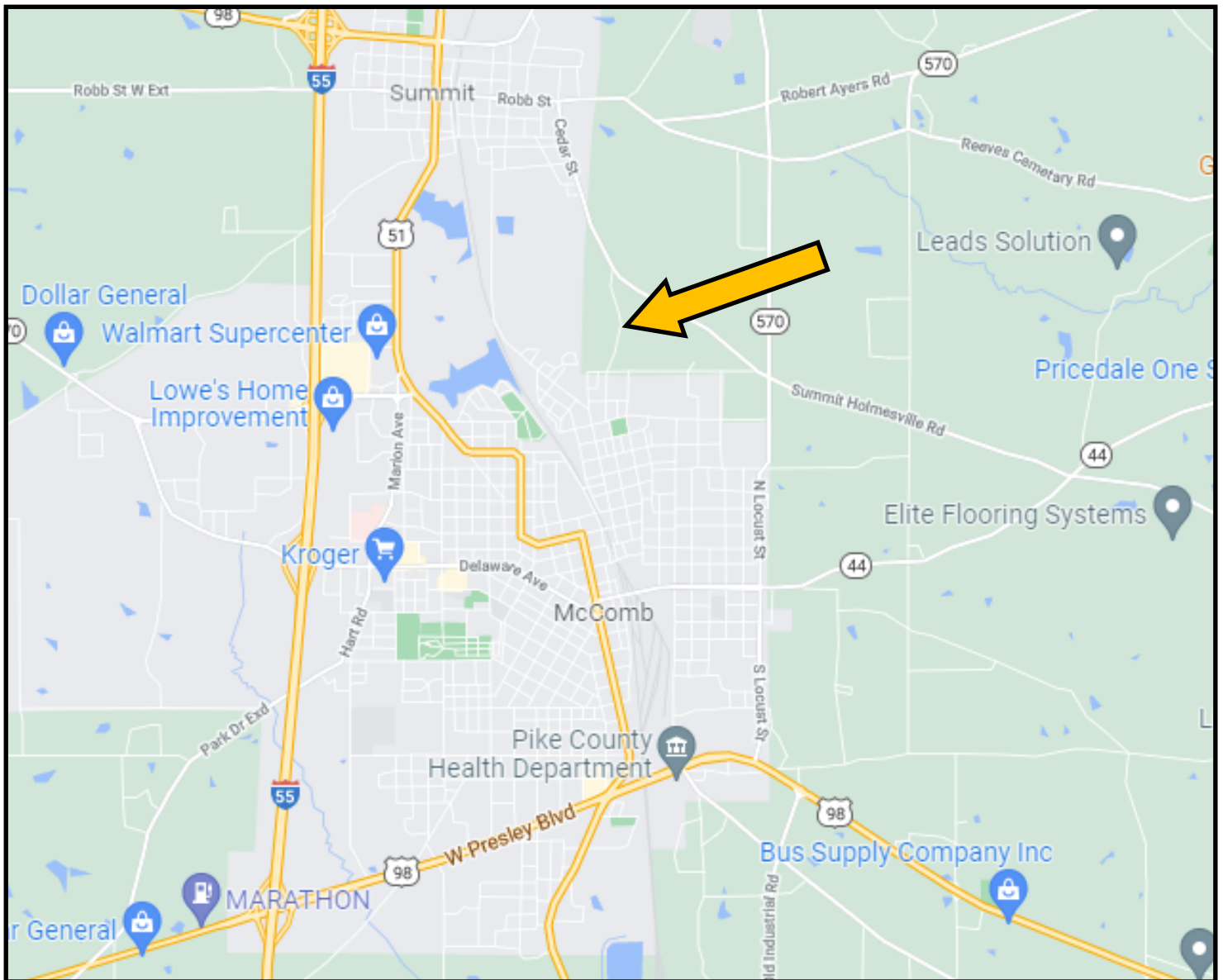
TARA WALKER SMITH, REALTOR®
Tara@TomSmithHomes.com
601.990.5070 **office** | 601.407.4315 **cell**



TomSmithLandandHomes.com

Information is believed to be accurate but not guaranteed.

Directional Map



Directions from Exit 20A off I-55 in McComb, MS: Travel toward Summit and in .3 miles continue on Lawrence Street. Continue straight on Hershal Grady Memorial Hwy and travel .4 miles. Turn right onto Walnut Street and travel .3 miles. Turn left onto Robb Street and travel .3 miles, then turn right on Cedar St. In .6 miles continue onto Summit Holmesville R. The property will be on the left in .6 miles: 119 Summit Holmesville Road.



TARA WALKER SMITH, REALTOR®
Tara@TomSmithHomes.com
601.990.5070 **office** | 601.407.4315 **cell**



TomSmithLandandHomes.com

Information is believed to be accurate but not guaranteed.