

Residential Homesite Oktibbeha County, MS



\$45,000

If you are looking for a nice lot to build your dream home you need to take a look at this one! This Oktibbeha County, MS property is located a short drive from the city limits of Starkville at the front of Steele Plantation subdivision. The .22+/- acre lot has already been cleared and is ready for the building process. There are underground utilities and fiber internet on site. Restrictive Covenants Apply. Call Michael today to schedule a showing.

Directions: From the intersection of Old West Point Rd and Hwy 182 in Starkville travel north approximately 5 miles on Old West Point Rd. Turn left onto Steele Rd and travel 650 feet; Lot 2 will be on the left.

[GOOGLE MAPS LINK](#)



call me today!

MICHAEL COOPER, REALTOR®

MCooper@TomSmithLand.com

662.268.6333 **office** | 662.285.8686 **cell**

135 Jefferson Street | Starkville, MS 39759



Expect More. Get More.

TomSmithLandandHomes.com

Information is believed to be accurate but not guaranteed.



MICHAEL COOPER, REALTOR®
MCooper@TomSmithLand.com
662.268.6333 **office** | 662.285.8686 **cell**
135 Jefferson Street | Starkville, MS 39759



TomSmithLandandHomes.com

Information is believed to be accurate but not guaranteed.

AERIAL MAP

Interactive Map



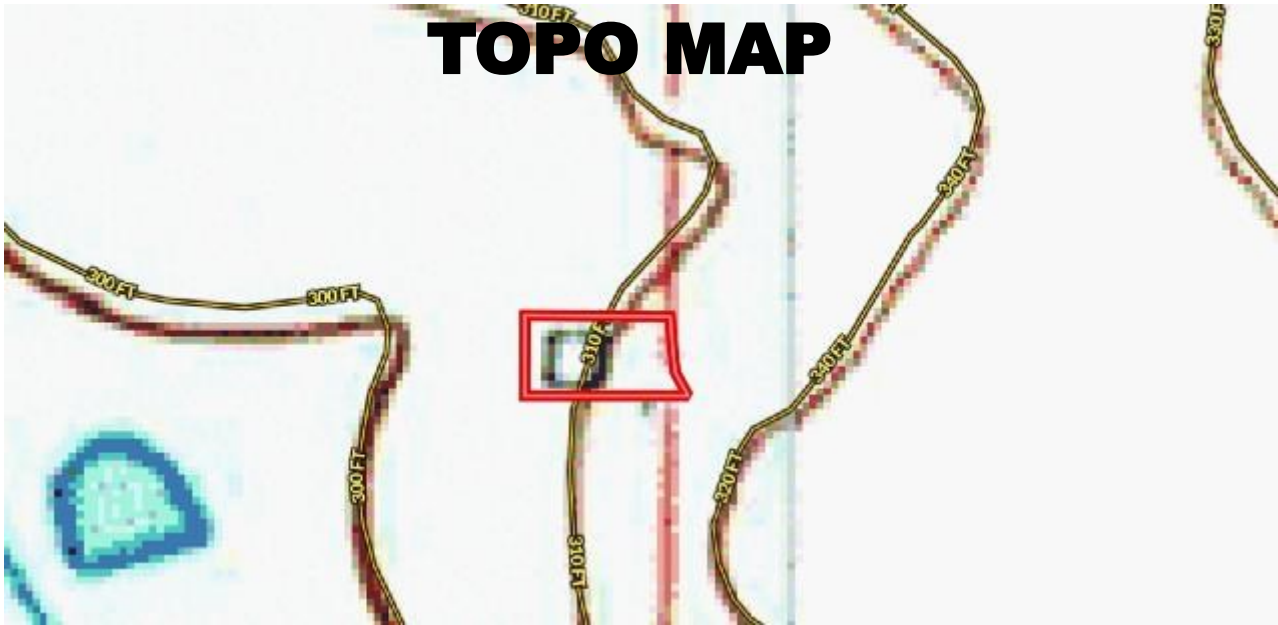
MICHAEL COOPER, REALTOR®
MCooper@TomSmithLand.com
662.268.6333 **office** | 662.285.8686 **cell**
135 Jefferson Street | Starkville, MS 39759



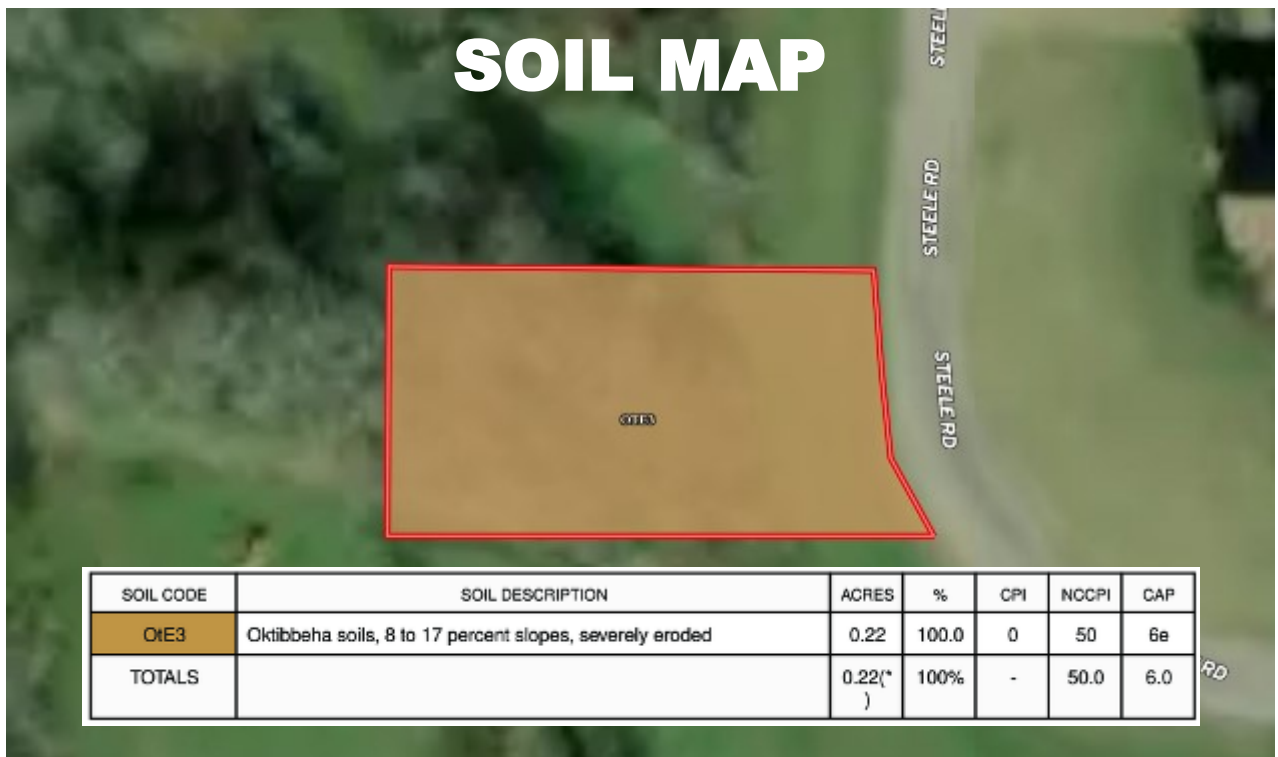
TomSmithLandandHomes.com

Information is believed to be accurate but not guaranteed.

TOPO MAP



SOIL MAP



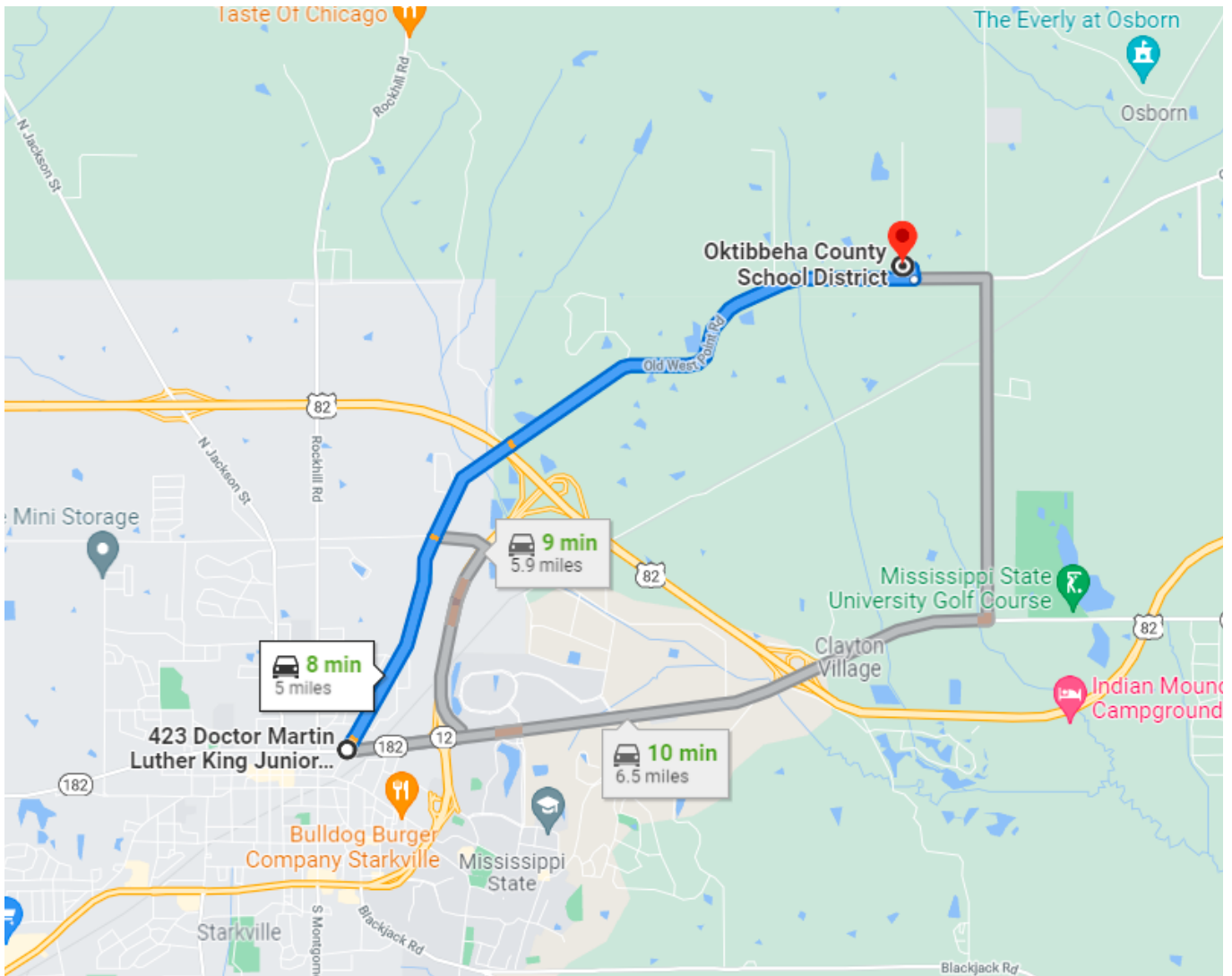
MICHAEL COOPER, REALTOR®
 MCooper@TomSmithLand.com
 662.268.6333 office | 662.285.8686 cell
 135 Jefferson Street | Starkville, MS 39759



TomSmithLandandHomes.com

Information is believed to be accurate but not guaranteed.

DIRECTIONAL MAP



Directions: From the intersection of Old West Point Rd and Hwy 182 in Starkville travel north approximately 5 miles on Old West Point Rd. Turn left onto Steele Rd and travel 650 feet; Lot 2 will be on the left. [GOOGLE MAPS LINK](#)



MICHAEL COOPER, REALTOR®
MCooper@TomSmithLand.com
662.268.6333 office | 662.285.8686 cell
135 Jefferson Street | Starkville, MS 39759



TomSmithLandandHomes.com

Information is believed to be accurate but not guaranteed.