

6+/- Acres in Lincoln County, MS



\$50,000

Take a look at this fantastic 6+/- acre property featuring more than 600 feet of road frontage on East Lincoln Rd. This Lincoln County, MS tract is heavily wooded with plenty of large pine and hardwoods. Located in the desirable Enterprise School District, and offers multiple home sites to choose from. A small bottom at the southern edge of the property is full of hardwoods and adds a little diversity to the property. Call Clif Cannon to schedule a tour.

Directions from the intersection of I-55 and US-84 in Brookhaven MS: Travel east on US-84 for 5.6 miles. Turn right onto East Lincoln Road and travel for 10.2 miles. The property will be on the right.



call me today!

CLIF CANNON, REALTOR®
Clif@TomSmithLand.com
601.990.5070 office | 601.565.1070 cell



TomSmithLandandHomes.com

Information is believed to be accurate but not guaranteed.



CLIF CANNON, REALTOR®

Clif@TomSmithLand.com

601.990.5070 office | 601.565.1070 cell



Expect More. Get More.

TomSmithLandandHomes.com

Information is believed to be accurate but not guaranteed.

Aerial Map



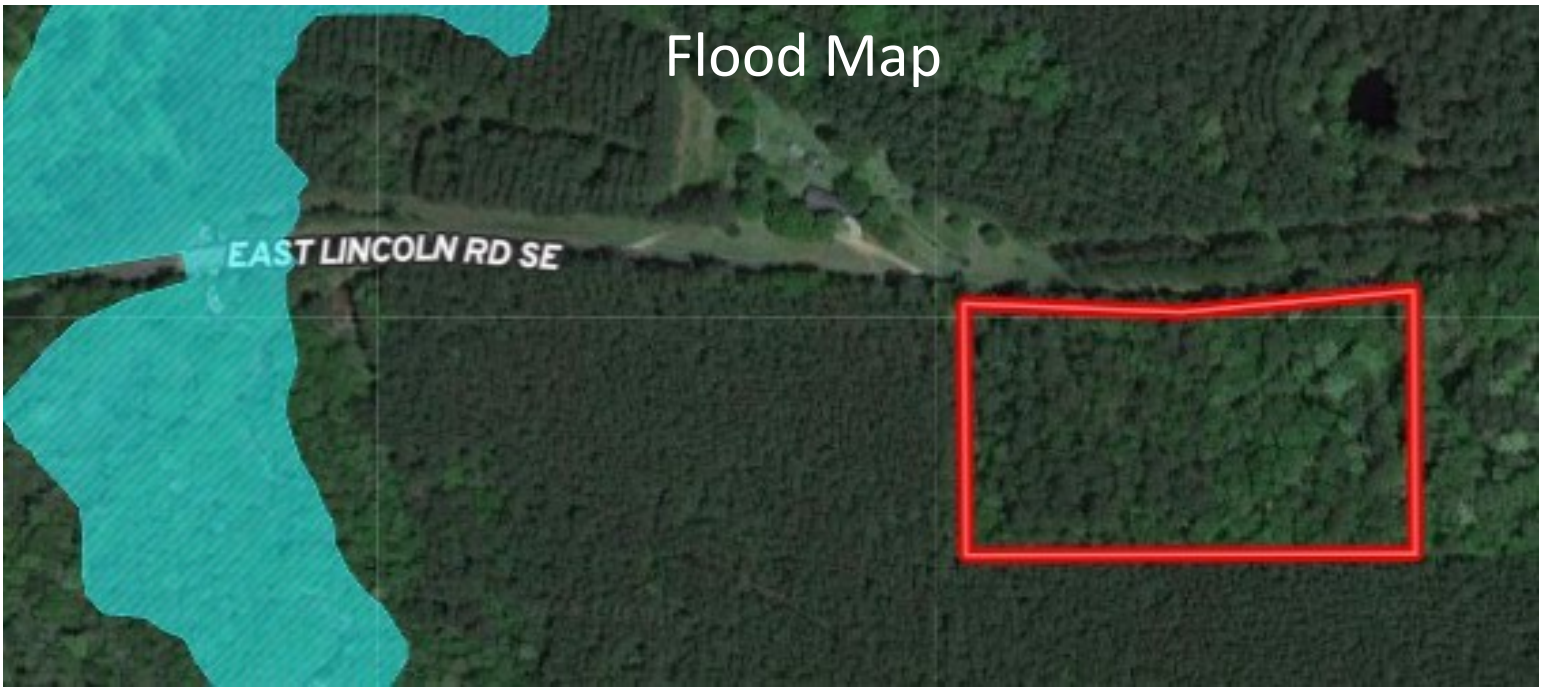
CLIF CANNON, REALTOR®
Clif@TomSmithLand.com
601.990.5070 office | 601.565.1070 cell



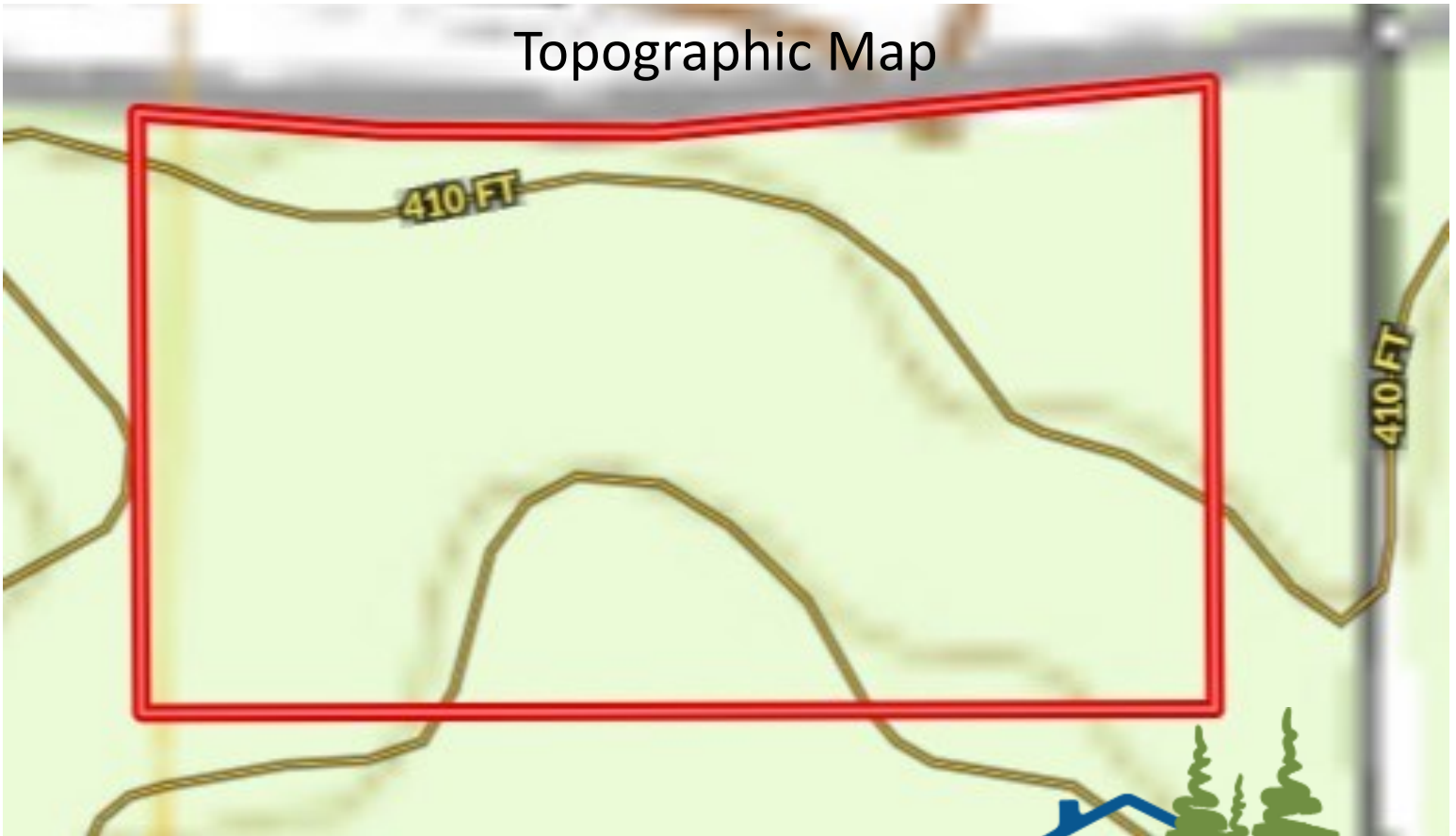
TomSmithLandandHomes.com

Information is believed to be accurate but not guaranteed.

Flood Map



Topographic Map



CLIF CANNON, REALTOR®
Clif@TomSmithLand.com
601.990.5070 office | 601.565.1070 cell



TomSmithLandandHomes.com

Information is believed to be accurate but not guaranteed.

Ownership Map



CLIF CANNON, REALTOR®
Clif@TomSmithLand.com
601.990.5070 office | 601.565.1070 cell



TomSmithLandandHomes.com

Information is believed to be accurate but not guaranteed.

Directional Map



Directions from the intersection of I-55 and US-84 in Brookhaven MS: Travel east on US-84 for 5.6 miles. Turn right onto East Lincoln Road and travel for 10.2 miles. The property will be on the right.



CLIF CANNON, REALTOR®
Clif@TomSmithLand.com
601.990.5070 office | 601.565.1070 cell



TomSmithLandandHomes.com

Information is believed to be accurate but not guaranteed.