

Bungalow Style Home

Rosedale, MS * Bolivar County



404 Levee St Rosedale, MS

\$135,000

Are you looking for a home in Bolivar County, MS? If so, come view this two bedroom, two bath house, built in 2017. Upon entering the front door, you will find a cozy den with a gas fireplace, gorgeous pine floors and a top notch kitchen, offering granite counters and stainless steel appliances. An unfinished bonus room is on the second level and can easily be converted into a third bedroom. You will fall in love with the front and rear matching porches and the additional sitting area in the back yard. This property backs up to the levee where you can enjoy watching the sunset and deer graze! Make this house your new home or hunting cabin! Call Tracey Bell to schedule a private showing.

Directions from Cleveland, MS: Travel west on Hwy 8 for approximately 19.4 miles. Turn right on Main Street and continue for .8 miles. Turn left on Vorhees Street, continue for 0.1 miles. Turn right on Levee Street and the destination is on the left.



Call me today!

TRACEY BELL, MANAGING BROKER

Tracey@TomSmithLand.com

662.441.2500 office | 662.719.4720 cell



Expect More. Get More.

TomSmithLandandHomes.com

Information is believed to be accurate but not guaranteed.



TRACEY BELL, MANAGING BROKER
Tracey@TomSmithLand.com
662.441.2500 office | 662.719.4720 cell



TomSmithLandandHomes.com

Information is believed to be accurate but not guaranteed.



TRACEY BELL, MANAGING BROKER
Tracey@TomSmithLand.com
662.441.2500 office | 662.719.4720 cell



TomSmithLandandHomes.com

Information is believed to be accurate but not guaranteed.



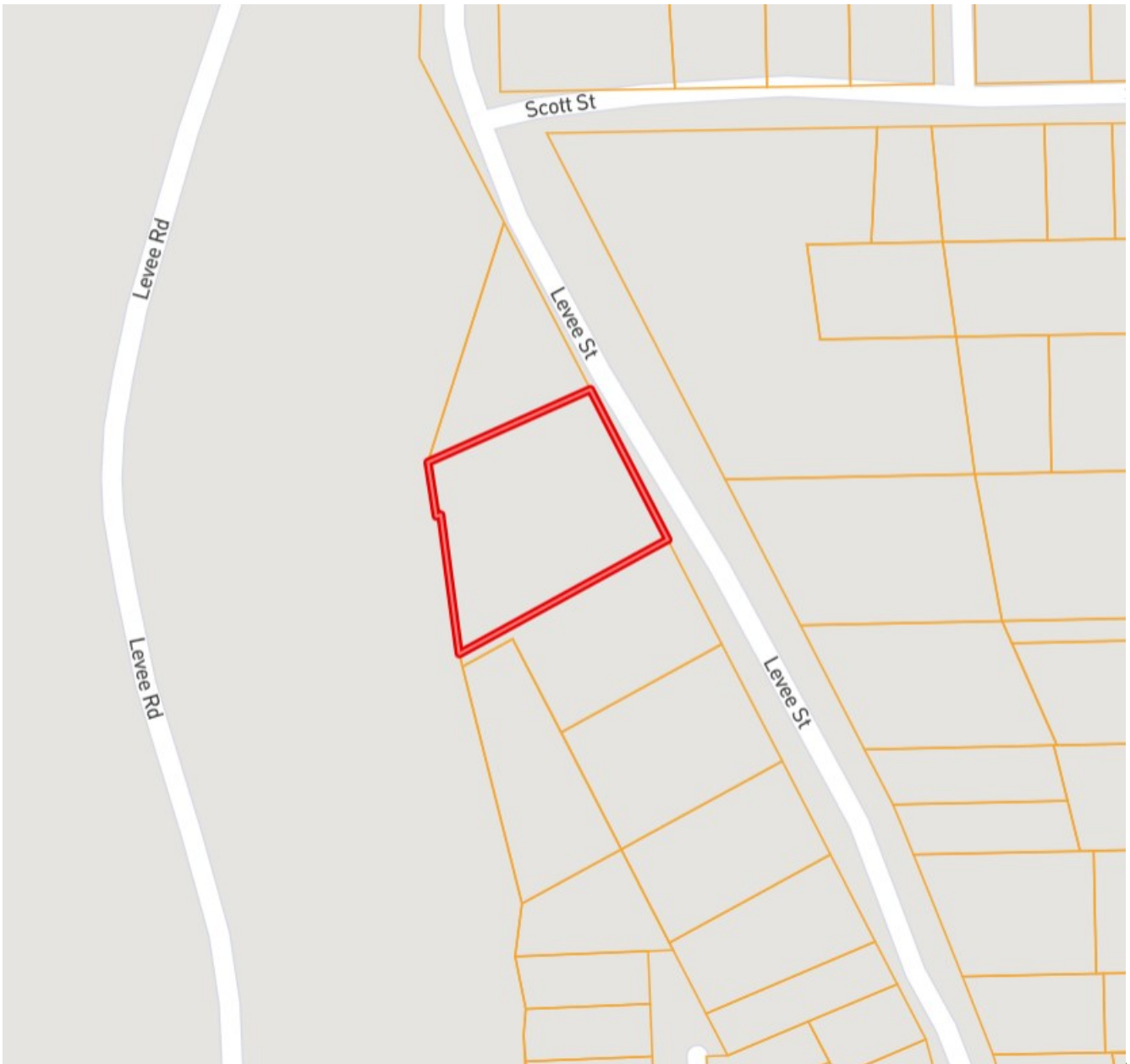
TRACEY BELL, MANAGING BROKER
Tracey@TomSmithLand.com
662.441.2500 office | 662.719.4720 cell



TomSmithLandandHomes.com

Information is believed to be accurate but not guaranteed.

OWNERSHIP MAP



TRACEY BELL, MANAGING BROKER
Tracey@TomSmithLand.com
662.441.2500 office | 662.719.4720 cell



TomSmithLandandHomes.com

Information is believed to be accurate but not guaranteed.

AERIAL MAP



[Click for Interactive Map](#)

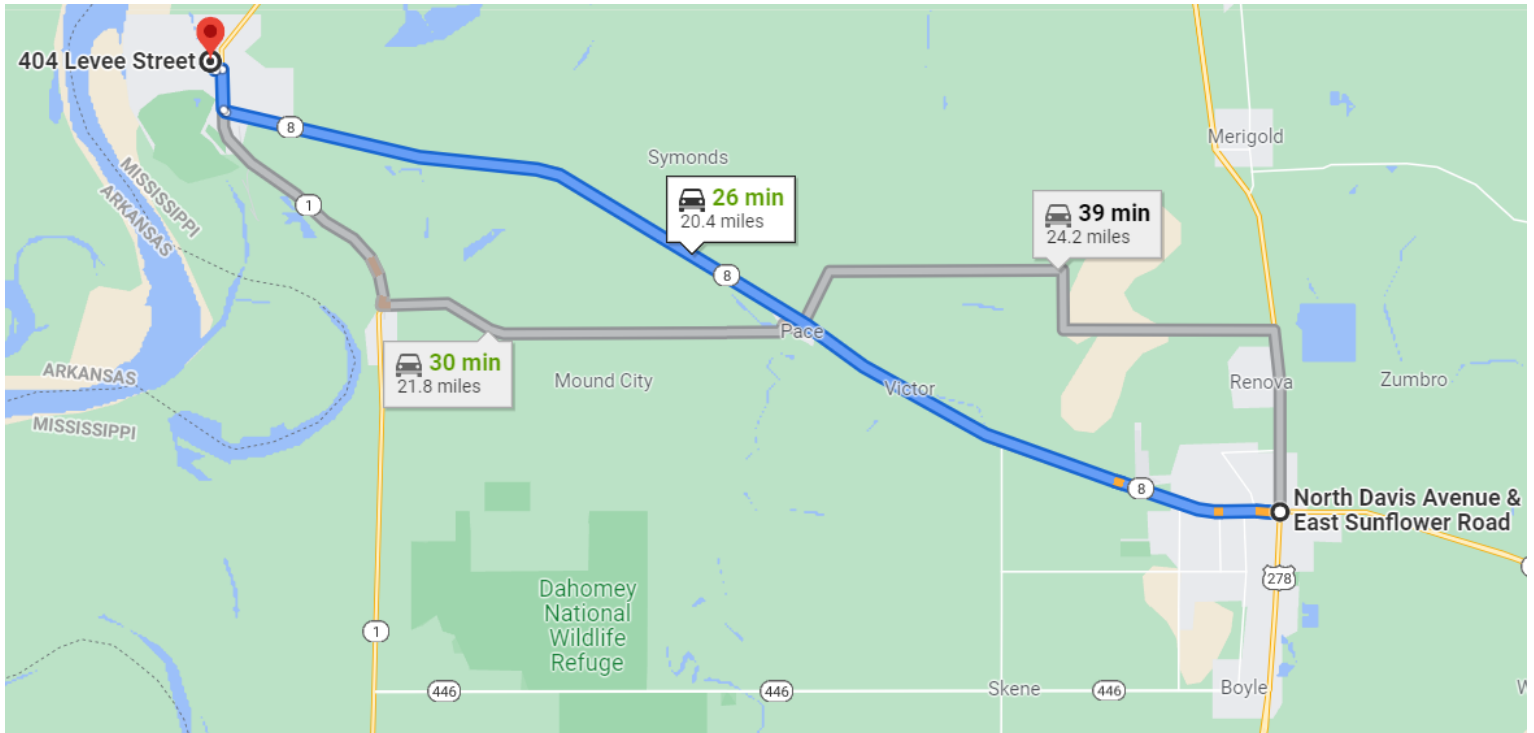


TRACEY BELL, MANAGING BROKER
Tracey@TomSmithLand.com
662.441.2500 office | 662.719.4720 cell

TomSmithLandandHomes.com

Information is believed to be accurate but not guaranteed.

DIRECTIONAL MAP



404 Levee Street

Rosedale, MS 38769

Directions from Cleveland, MS: Travel west on Hwy 8 for approximately 19.4 miles. Turn right on Main Street and continue for .8 miles. Turn left on Vorhees Street, continue for 0.1 miles. Turn right on Levee Street and the destination is on the left.



TRACEY BELL, MANAGING BROKER
Tracey@TomSmithLand.com
662.441.2500 **office** | 662.719.4720 **cell**



TomSmithLandandHomes.com

Information is believed to be accurate but not guaranteed.