

40+/- Acres in Oktibbeha County, MS Young Timber / Recreational Investment



\$80,000

Now is the time to invest in Oktibbeha County, MS! Look at this 40+/- acre property that features a beautiful view, rolling topography, modest potential home or cabin site, and is near the Tombigbee National Forest. The timber was planted in 2017, offering a long-term timber investment while providing ample cover for various wildlife species. The property has gravel road frontage on both Hunt and Scott Road, where utilities are available. This property is located approximately 17 miles West of Starkville. For more information, or to schedule a showing, call Harper Day today! **Directions From Starkville, MS:** Travel Southwest on MS-12 for 12.7 miles. Turn left onto Louisville Road and travel 1.7 miles. Turn right onto Hunt Road and travel 3.0 miles. The property will be on both sides of the road at intersection of Scott Road and Hunt Road. [Interactive Map](#)



call me today!

HARPER DAY, REALTOR®
Harper@TomSmithLand.com
662.268.6333 office | 662.694.9751 cell



TomSmithLandandHomes.com

Information is believed to be accurate but not guaranteed.



Call me today!

HARPER DAY, REALTOR®
Harper@TomSmithLand.com
662.268.6333 office | 662.694.9751 cell



TomSmithLandandHomes.com

Information is believed to be accurate but not guaranteed.



Call me today!

HARPER DAY, REALTOR®
Harper@TomSmithLand.com
662.268.6333 office | 662.694.9751 cell



TomSmithLandandHomes.com

Information is believed to be accurate but not guaranteed.



Aerial Map



call me today!

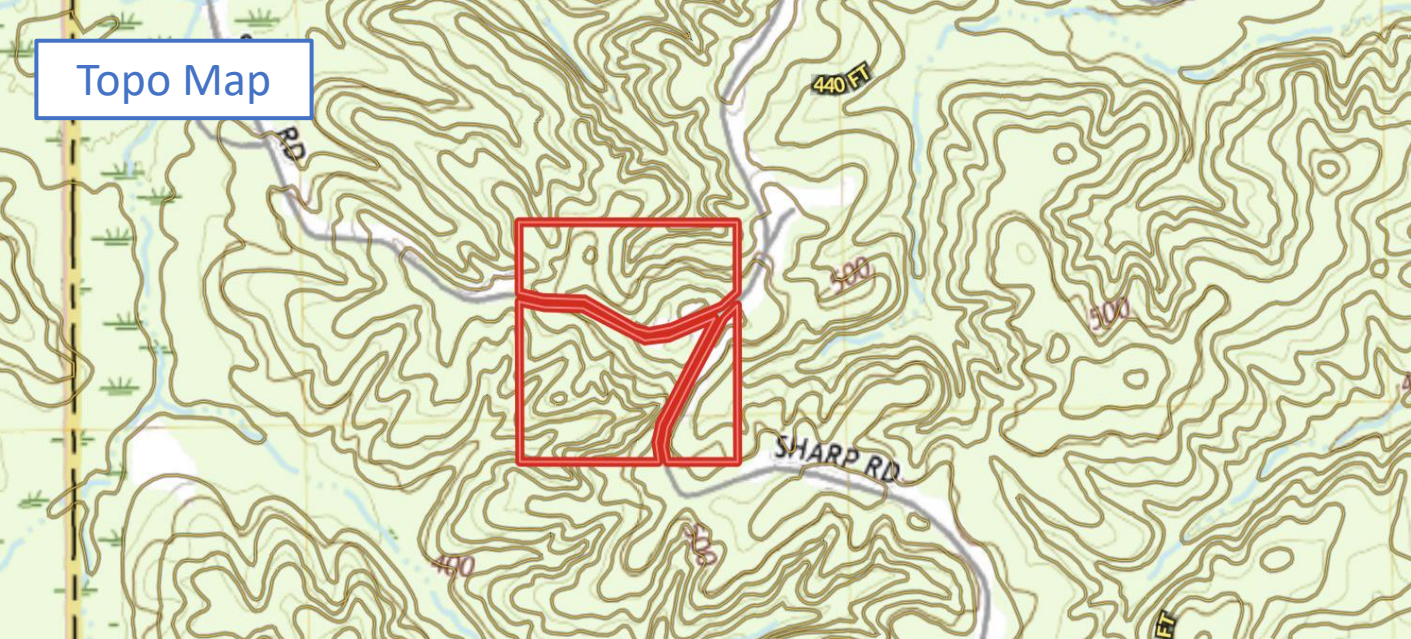
HARPER DAY, REALTOR®
Harper@TomSmithLand.com
662.268.6333 office | 662.694.9751 cell



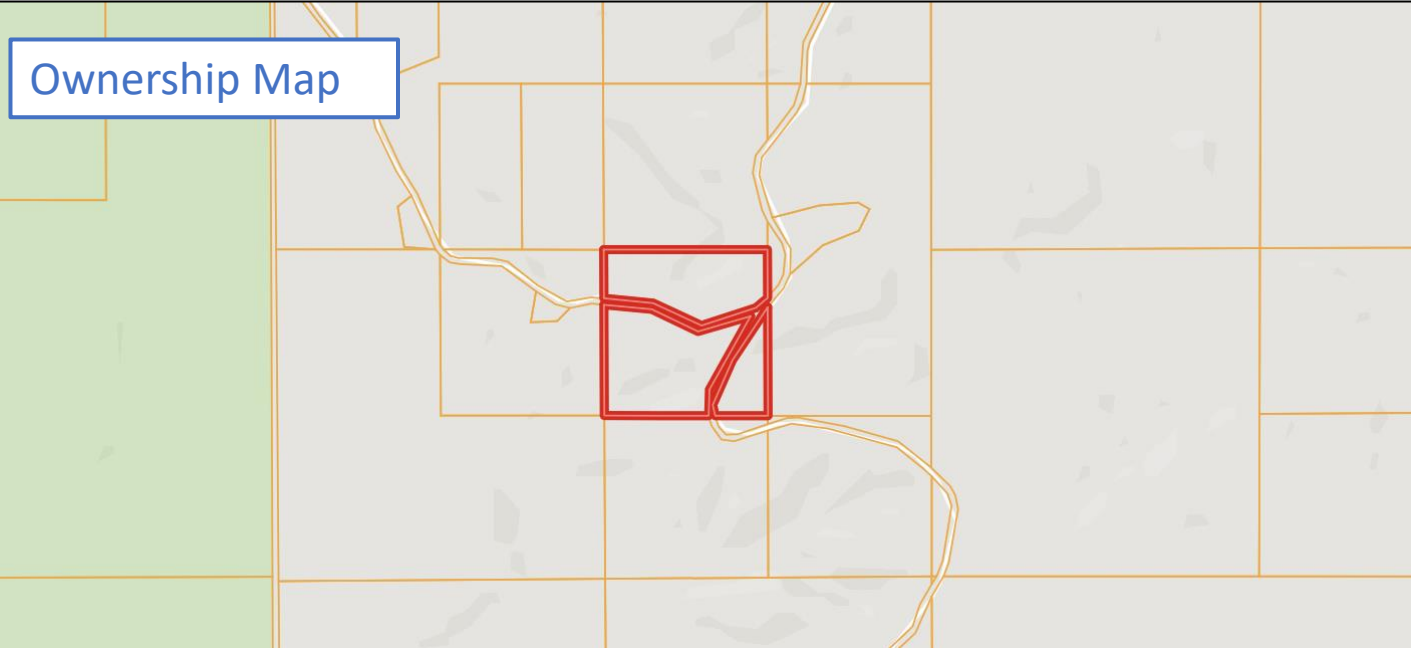
TomSmithLandandHomes.com

Information is believed to be accurate but not guaranteed.

Topo Map



Ownership Map



call me today!

LandReport
2010-2021
AMERICA'S
BEST
BROKERAGES

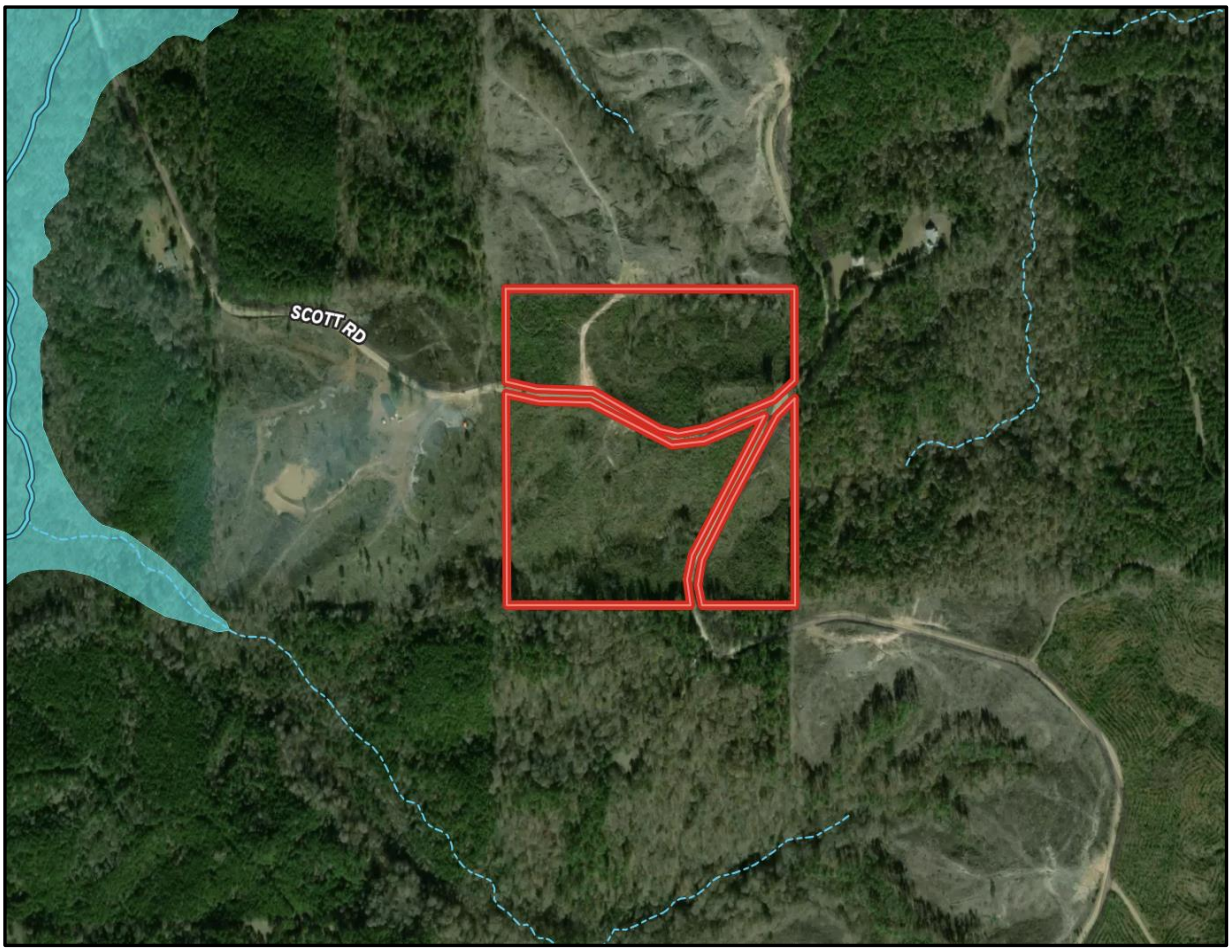
HARPER DAY, REALTOR®
Harper@TomSmithLand.com
662.268.6333 office | 662.694.9751 cell



Expect More. Get More.

TomSmithLandandHomes.com

Information is believed to be accurate but not guaranteed.



FEMA Flood and Water Feature Map



call me today!

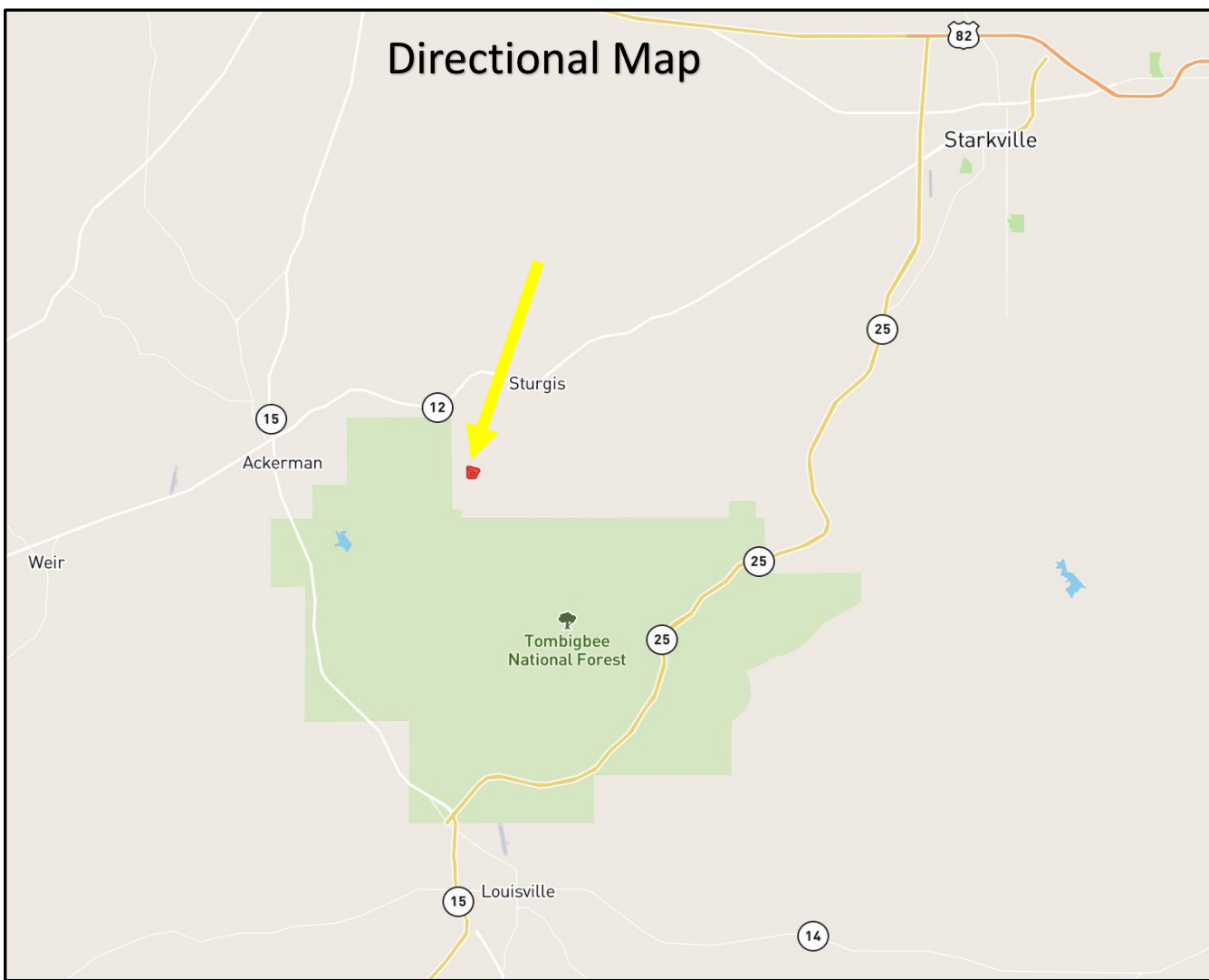
HARPER DAY, REALTOR®
Harper@TomSmithLand.com
662.268.6333 office | 662.694.9751 cell



TomSmithLandandHomes.com

Information is believed to be accurate but not guaranteed.

Directional Map



Directions From Starkville, MS: Travel Southwest on MS-12 for 12.7 miles. Turn left onto Louisville Road and travel 1.7 miles. Turn right onto Hunt Road and travel 3.0 miles. The property will be on both sides of the road at intersection of Scott Road and Hunt Road. [Interactive Map](#)



Call me today!

HARPER DAY, REALTOR®
Harper@TomSmithLand.com
662.268.6333 office | 662.694.9751 cell



TomSmithLandandHomes.com

Information is believed to be accurate but not guaranteed.