

# Secluded Getaway

17.15± Acres

Hinds County, MS



**\$75,000**

Directions from Flora, MS: Travel on MS-22 W/Peach Street for 11.4 miles. Turn right on Trotter Road and travel for 1.1 miles. Turn left onto Johnson Line Road and continue for 1.9 miles. Turn left on Frank Hall Road and travel for 1.6 miles. Final access by deeded easement.



MORE THAN  
14K  
FOLLOWERS  
ON FACEBOOK

*Call me today!*

**MICHAEL OSWALT**, ASSOCIATE BROKER®

Michael@TomSmithLand.com

601.898.2772 **office** | 662.719.3967 **cell**

Licensed in MS, AR & MO



Expect More. Get More.

**TomSmithLandandHomes.com**

Information is believed to be accurate but not guaranteed.



Welcome to your tucked away Hinds County destination! This 17.15 +/- surveyed acre tract sits just past the dead-end of Thomas Cox Road (final access by deeded easement). The property is currently timbered with some mature hardwood pockets and overgrown pastures. A small creek traverses east to west. With the property being in raw form (no trails in place) you can develop as you would like. Clean the old pasture areas, hunt, clear a building site, or just enjoy a secluded getaway about 20 miles northwest of the metro area, whatever the reasoning, get ready to make it your own! If you have been looking for an affordable property in the country with great possibilities, call Michael Oswalt today. 2020 Taxes \$175



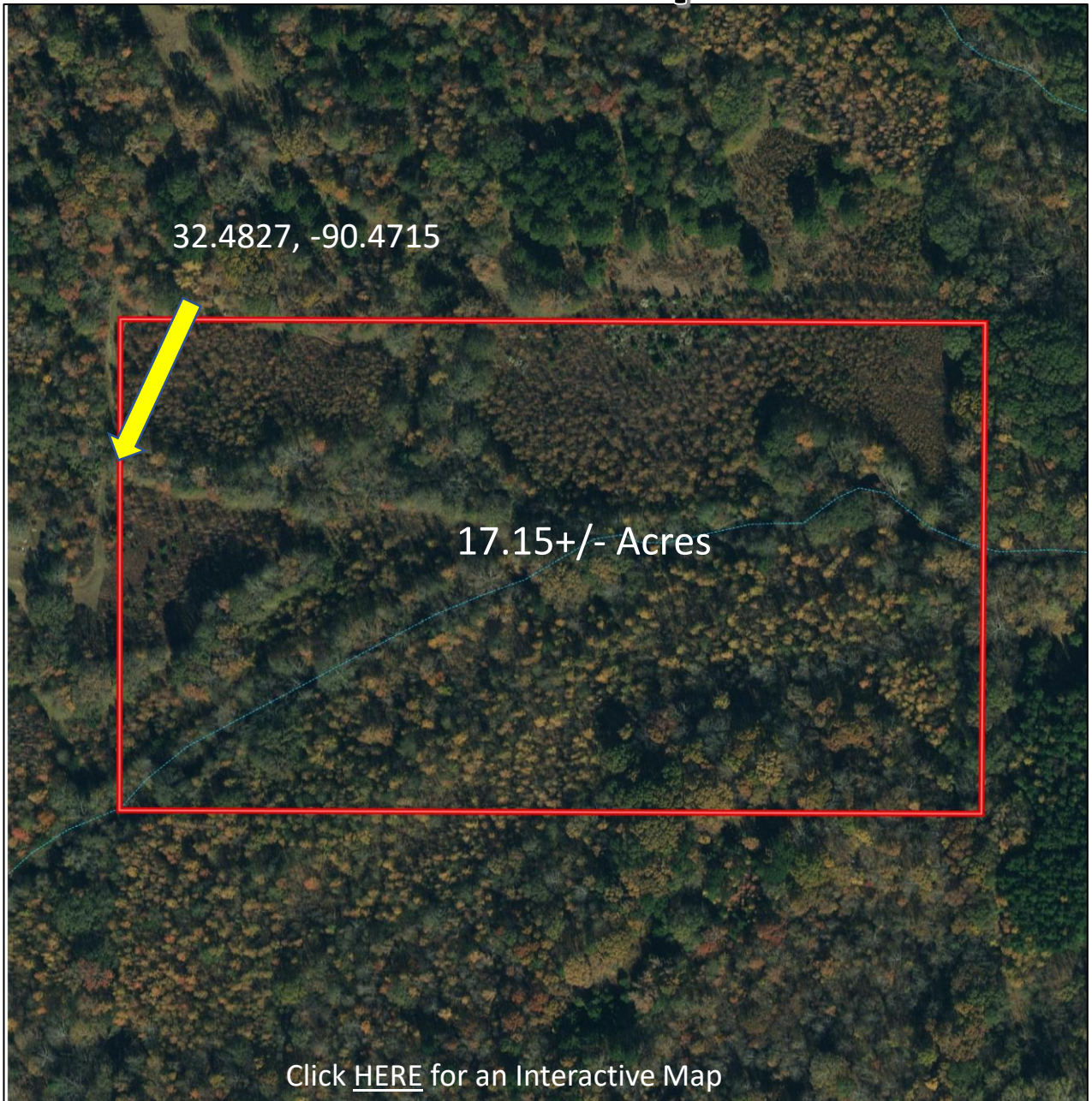
**MICHAEL OSWALT**, ASSOCIATE BROKER®  
 Michael@TomSmithLand.com  
 601.898.2772 office | 662.719.3967 cell  
 Licensed in MS, AR & MO



**TomSmithLandandHomes.com**

Information is believed to be accurate but not guaranteed.

# Aerial Map



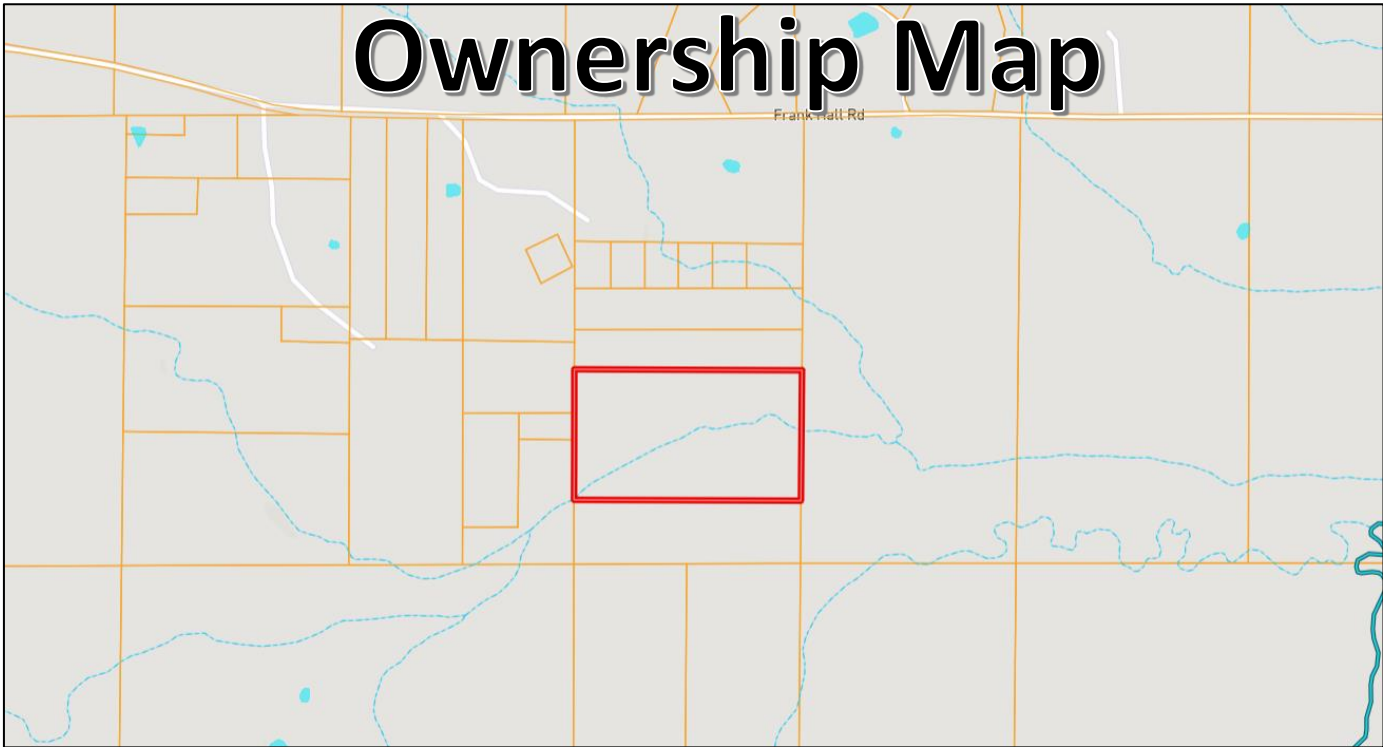
**MICHAEL OSWALT**, ASSOCIATE BROKER®  
Michael@TomSmithLand.com  
601.898.2772 **office** | 662.719.3967 **cell**  
Licensed in MS, AR & MO



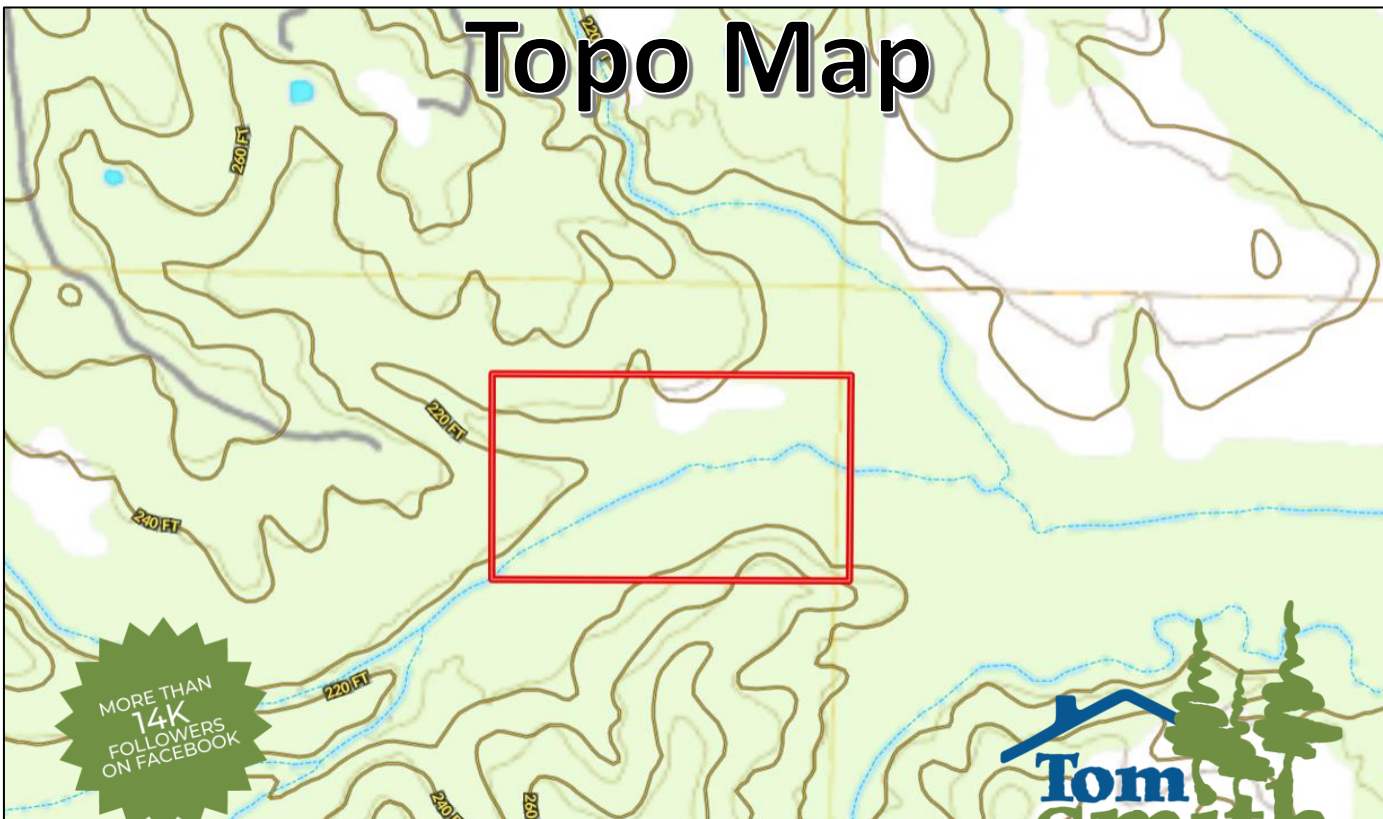
**TomSmithLandandHomes.com**

Information is believed to be accurate but not guaranteed.

# Ownership Map



# Topo Map



MORE THAN  
14K  
FOLLOWERS  
ON FACEBOOK



**MICHAEL OSWALT**, ASSOCIATE BROKER®

Michael@TomSmithLand.com

601.898.2772 office | 662.719.3967 cell

Licensed in MS, AR & MO

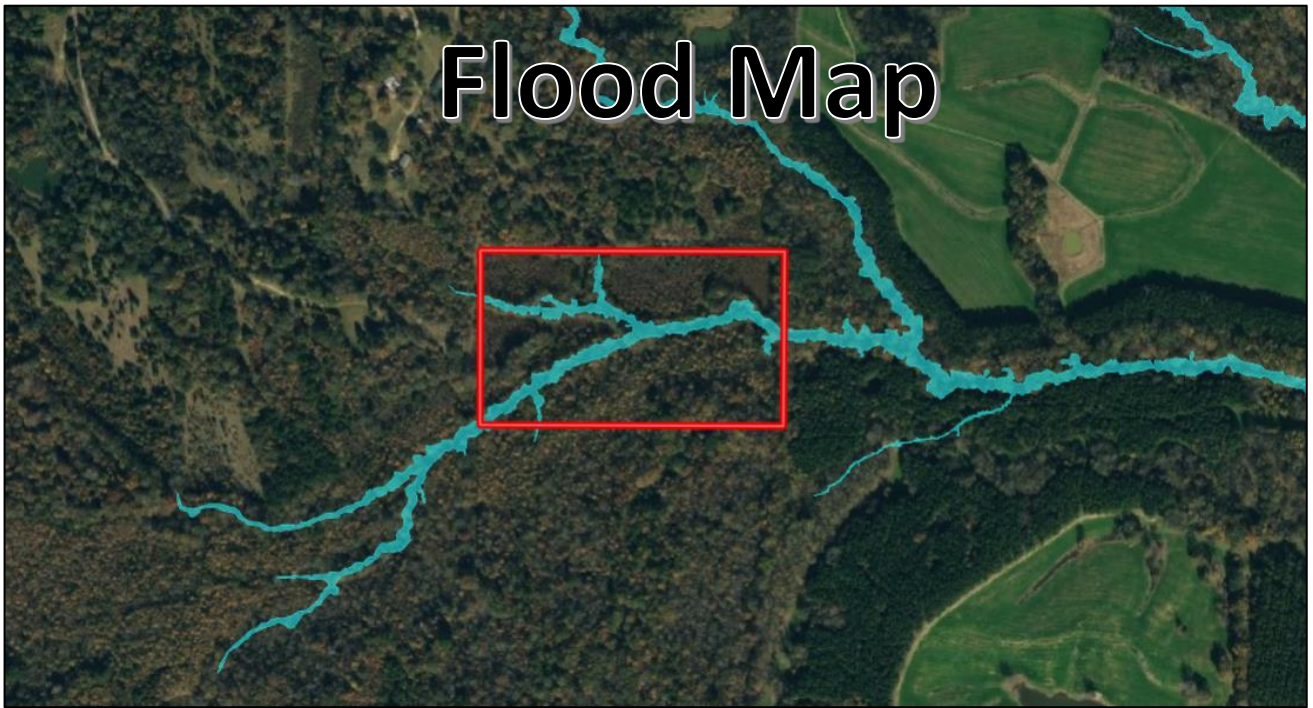
Expect More. Get More.



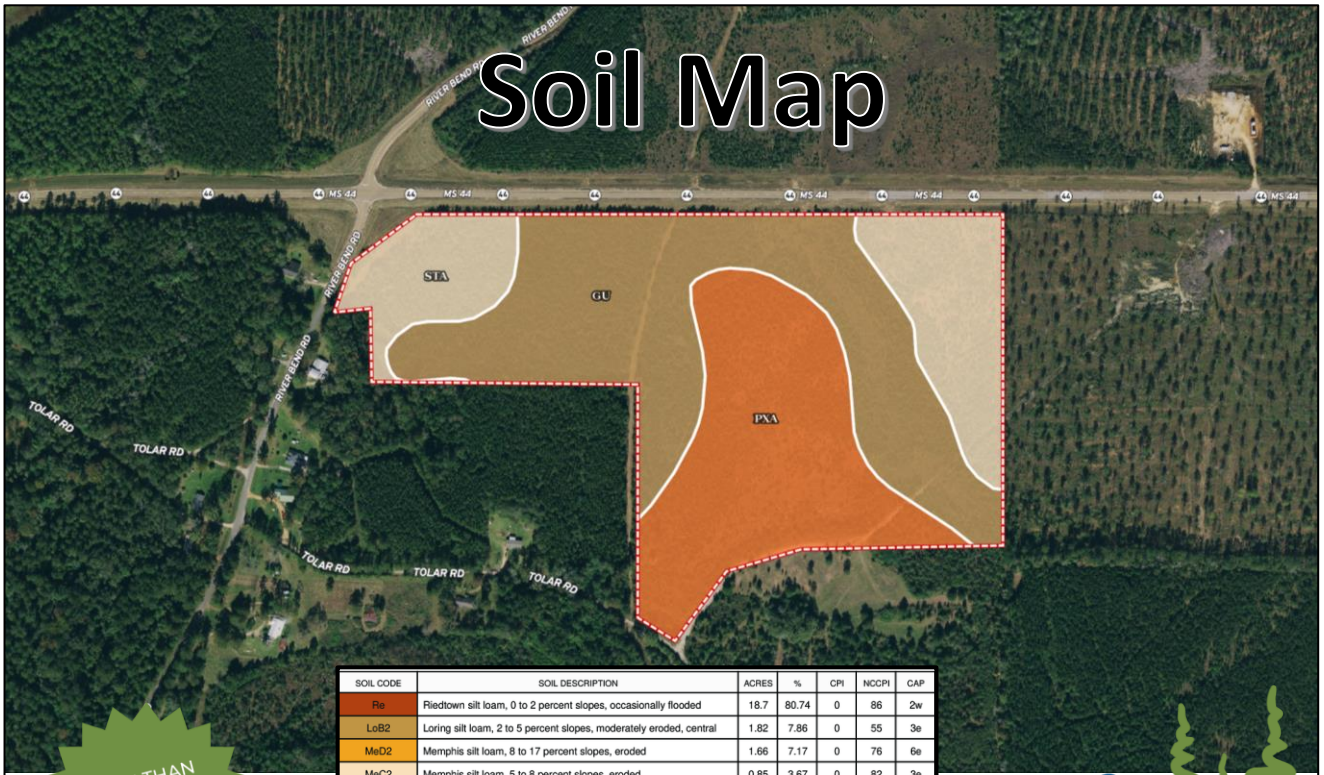
**TomSmithLandandHomes.com**

Information is believed to be accurate but not guaranteed.

# Flood Map



# Soil Map



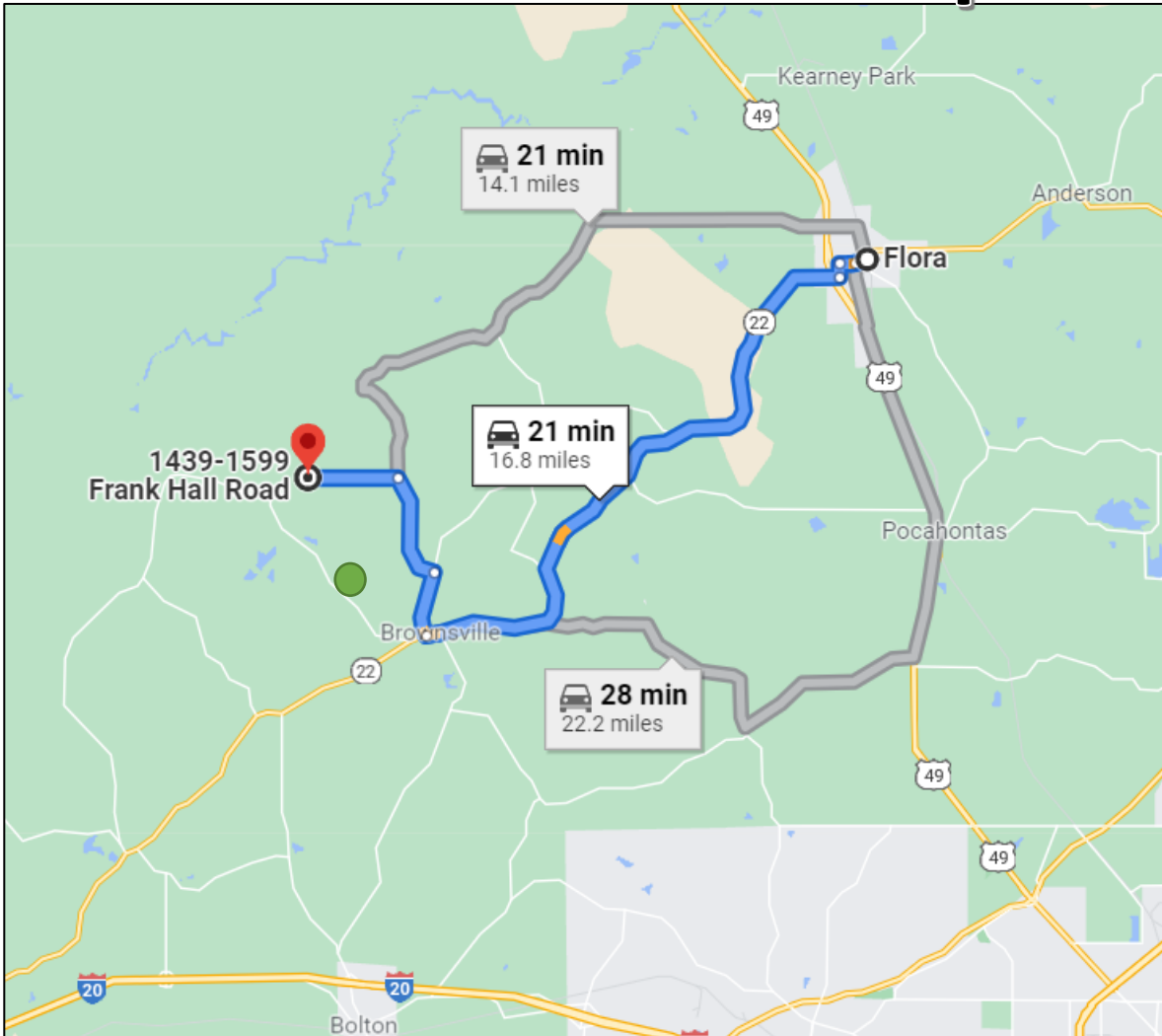
MORE THAN 14K FOLLOWERS ON FACEBOOK



**MICHAEL OSWALT**, ASSOCIATE BROKER®  
 Michael@TomSmithLand.com  
 601.898.2772 office | 662.719.3967 cell  
 Licensed in MS, AR & MO



# Directional Map



Directions from Flora, MS: Travel on MS-22 W/Peach Street for 11.4 miles. Turn right on Trotter Road and travel for 1.1 miles. Turn left onto Johnson Line Road and continue for 1.9 miles. Turn left on Frank Hall Road and travel for 1.6 miles. Final access by deeded easement.



MORE THAN  
14K  
FOLLOWERS  
ON FACEBOOK

Click [HERE](#) for Google Maps

*Call me today!*

**MICHAEL OSWALT**, ASSOCIATE BROKER®  
Michael@TomSmithLand.com  
601.898.2772 **office** | 662.719.3967 **cell**  
Licensed in MS, AR & MO



**TomSmithLandandHomes.com**

Information is believed to be accurate but not guaranteed.