

2+/- Acre Recreational Tract Perry County, MS



97 Ann Hinton Road Beaumont, MS 39423



Check out this 2+/--acre recreational lot in Perry County, MS. This is the perfect small acreage tract for fishing and enjoying the outdoors. This property includes a 20X60 RV camper Shed, a shared pond proving water for wildlife, established utilities, a storage shed with 16X60 porch and a metal storage building. Located on Ann Hinton Road in Beaumont, less than 5 miles to Hwy 98 and less than 30 miles to Hattiesburg. This property is located along Leaf River which is known for great fishing and beautiful sand bars; perfect for family fun and relaxing. Come experience your own little getaway! Call Tara today to schedule a viewing!

Directions from Hwy 98 in Beaumont, MS: Travel west 5.4 miles and turn right onto Wingate Road. Travel 2.9 miles and turn right onto Ann Hinton Road and the property will be on your left in 300 feet.



Call me today!

TARA WALKER SMITH, REALTOR®
Tara@TomSmithHomes.com
601.990.5070 office | 601.407.4315 cell



TomSmithLandandHomes.com

Information is believed to be accurate but not guaranteed.



LandReport
2011-2021
AWARDS
BEST
BROKERAGES

Call me today!

TARA WALKER SMITH, REALTOR®
Tara@TomSmithHomes.com
601.990.5070 office | 601.407.4315 cell



Expect More. Get More.

TomSmithLandandHomes.com

Information is believed to be accurate but not guaranteed.

Aerial Map



Call me today!

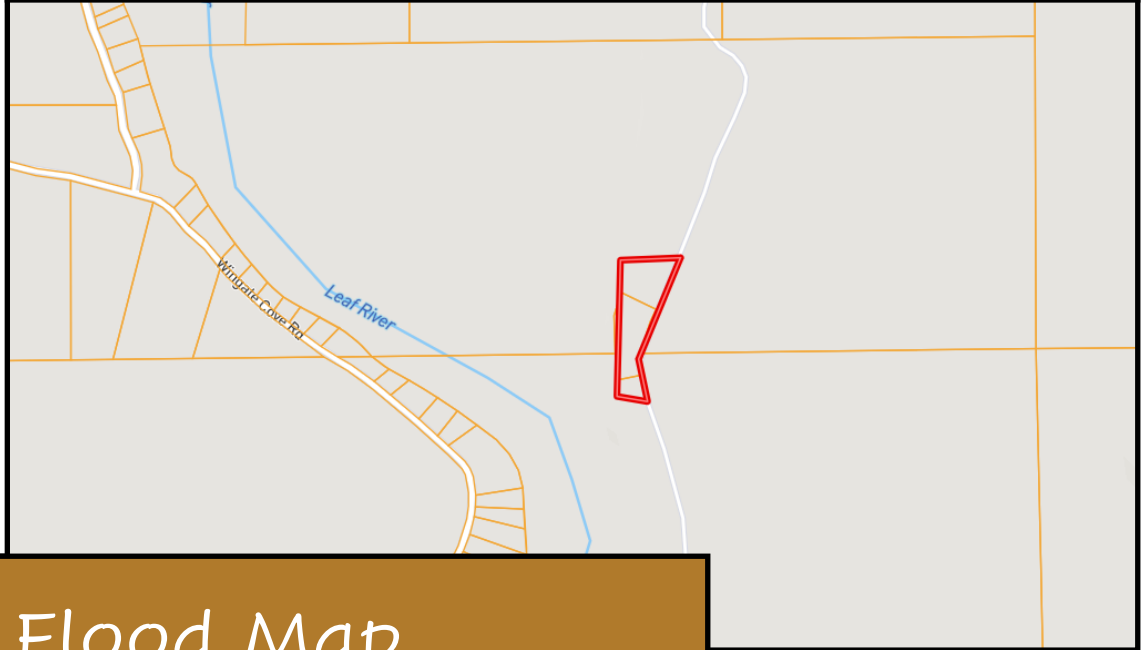
TARA WALKER SMITH, REALTOR®
Tara@TomSmithHomes.com
601.990.5070 office | 601.407.4315 cell



TomSmithLandandHomes.com

Information is believed to be accurate but not guaranteed.

Ownership Map



Flood Map



2011-2021
NATIONAL
BEST
BROKERAGES

Call me today!

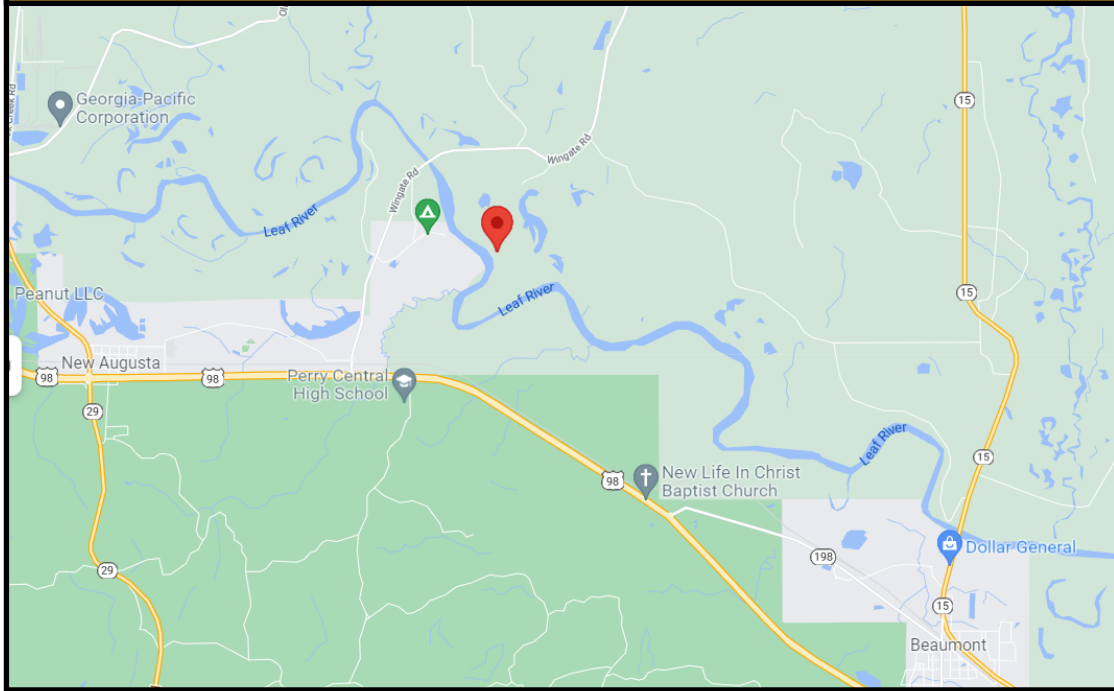
TARA WALKER SMITH, REALTOR®
Tara@TomSmithHomes.com
601.990.5070 office | 601.407.4315 cell



TomSmithLandandHomes.com

Information is believed to be accurate but not guaranteed.

Directional Map



Directions from Hwy 98 in Beaumont, MS: Travel west 5.4 miles and turn right onto Wingate Road. Travel 2.9 miles and turn right onto Ann Hinton Road and the property will be on your left in 300 feet.



Call me today!

TARA WALKER SMITH, REALTOR®
Tara@TomSmithHomes.com
601.990.5070 **office** | 601.407.4315 **cell**



TomSmithLandandHomes.com

Information is believed to be accurate but not guaranteed.