

# 4.9+/- ACRE COMMERCIAL TRACT NEWTON COUNTY, MS



Don't miss this 4.9 +/- acre tract zoned commercial in Newtown County, MS! This property is a prime commercial location with road frontage on E Jackson Road, near the busy intersection of Hwy 15 and Hwy 492. There are endless possibilities for the development of a business near all of the amenities Union has to offer. With established utilities, this tract is just waiting to be the next location for a new restaurant, car wash, laundry service; you name it! There is an old home on the property with no added value. The property is conveniently located between Meridian and Philadelphia. Call Tara today to schedule a viewing!



Directions from the Intersection of Main Street and E Jackson Road in Union, MS:  
Travel east for 0.7 miles and the property will be on your left.



*Call me today!*

**TARA WALKER SMITH, REALTOR®**  
Tara@TomSmithHomes.com  
601.990.5070 office | 601.407.4315 cell



**TomSmithLandandHomes.com**

Information is believed to be accurate but not guaranteed.



LandReport  
2011-2021  
BEST  
BROKERAGES

*Call me today!*

**TARA WALKER SMITH, REALTOR®**  
Tara@TomSmithHomes.com  
601.990.5070 office | 601.407.4315 cell



Expect More. Get More.

**TomSmithLandandHomes.com**

Information is believed to be accurate but not guaranteed.

# AERIAL MAP



LandReport  
2011-2021  
AMERICA'S  
**BEST**  
BROKERAGES

*Call me today!*

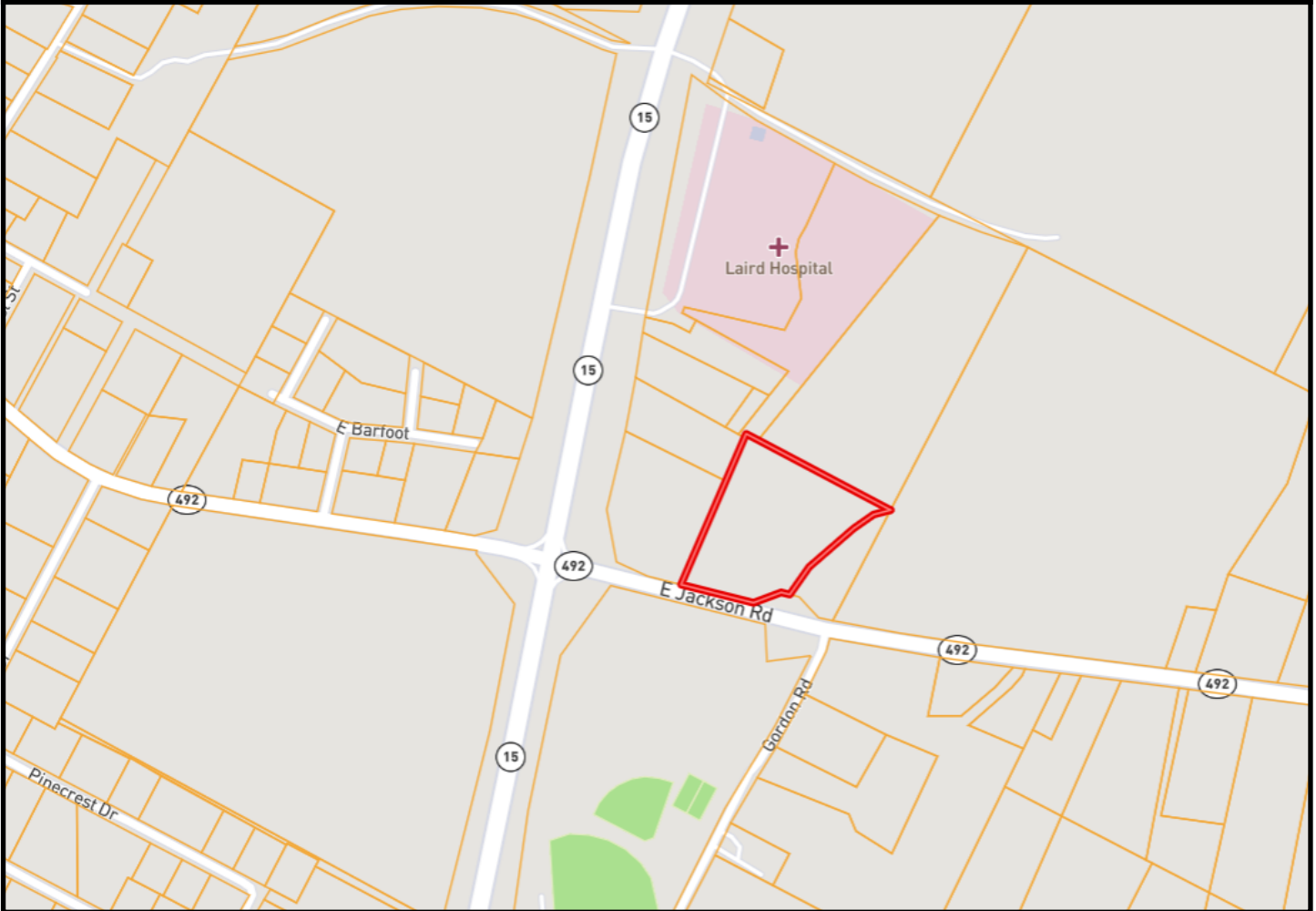
**TARA WALKER SMITH, REALTOR®**  
Tara@TomSmithHomes.com  
601.990.5070 office | 601.407.4315 cell



**TomSmithLandandHomes.com**

Information is believed to be accurate but not guaranteed.

# OWNERSHIP MAP



LandReport  
2011-2021  
AMERICA'S  
**BEST**  
BROKERAGES

*Call me today!*

**TARA WALKER SMITH, REALTOR®**  
Tara@TomSmithHomes.com  
601.990.5070 **office** | 601.407.4315 **cell**

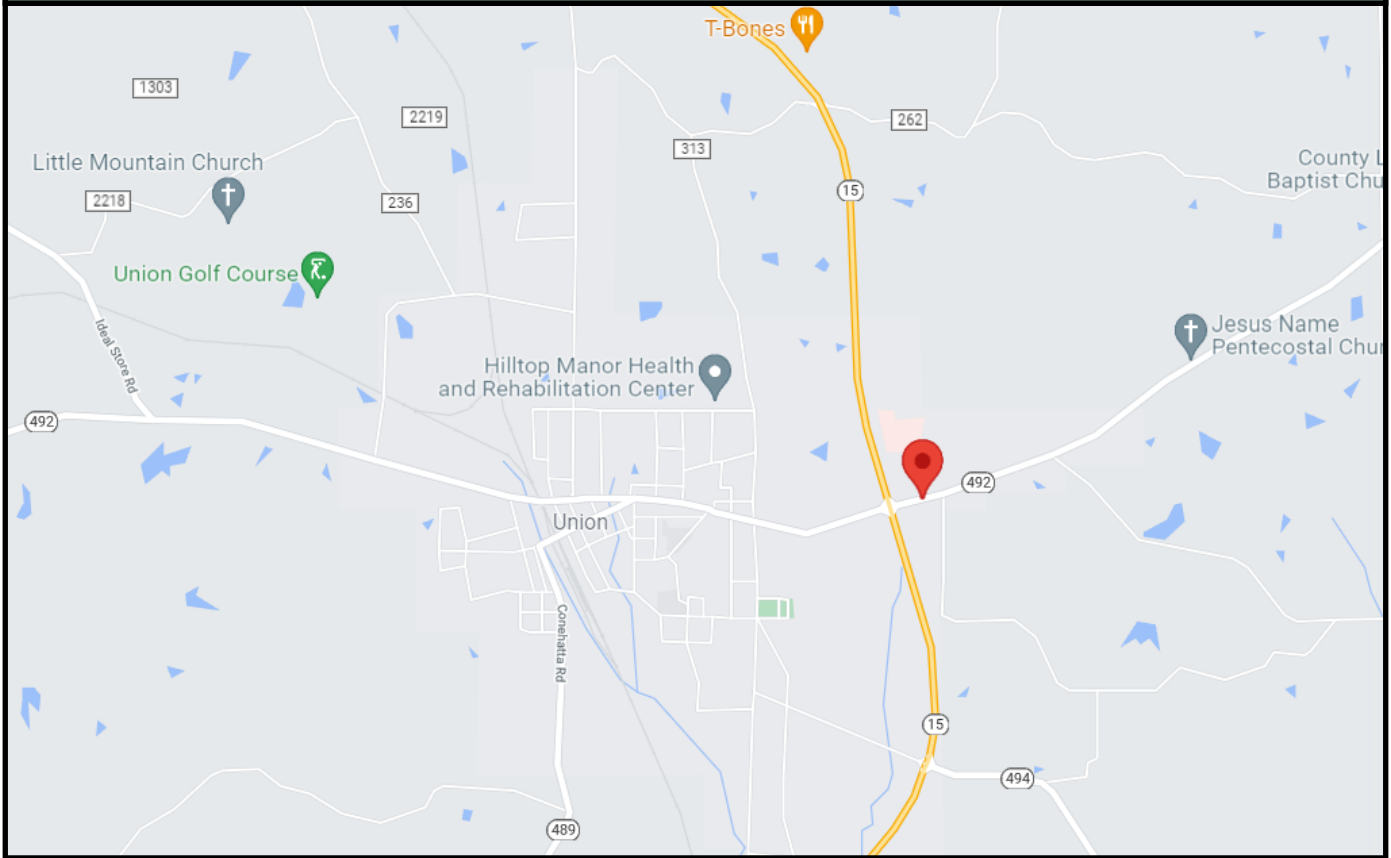


Expect More. Get More.

**TomSmithLandandHomes.com**

Information is believed to be accurate but not guaranteed.

# DIRECTIONAL MAP



**Directions from the Intersection of Main Street and E Jackson Road in Union, MS:**  
Travel east for 0.7 miles and the property will be on your left.



*Call me today!*

**TARA WALKER SMITH, REALTOR®**  
Tara@TomSmithHomes.com  
601.990.5070 office | 601.407.4315 cell



**TomSmithLandandHomes.com**

Information is believed to be accurate but not guaranteed.