

Home Located on 3.91+/- Acres Pike County, MS

Price Reduction !!!!!



- ◇ 3.91+/- Acres
- ◇ 2BR, 2BA Home
- ◇ North Pike School District
- ◇ Country Living
- ◇ Two Car Carport
- ◇ Storage Shed and Workshop

\$87,500

Check out this new listing in North Pike School District! This two bedroom, two bath home sits on 3.91+/- acres in Pike County, MS, and is ready for a new owner. The home was built in 2011 and features a two car carport, storage shed, and workshop. The rolling hills and mature hardwoods offer the perfect backdrop for country living. You will find road frontage on Sherwood Drive, convenient to US-98, I-55 and all the amenities McComb offers. Call Tara today to schedule a viewing.

Directions from I-55 S in McComb, MS: Take exit 15B for MS-24 W toward Liberty. Travel 0.3 miles and keep left at the fork and turn left onto MS-24 E. Continue on MS-24 E for 6.3 miles. Turn left onto Gibson Road. Travel 1.9 miles and take a slight right onto Holmesville Road. Travel 0.8 miles and turn right onto Sherwood Drive. The home will be on the right in 0.6 miles. Address: 1108 Sherwood Drive, McComb, MS 39648



Call me today!

TARA WALKER SMITH, REALTOR®
Tara@TomSmithHomes.com
601.990.5070 office | 601.407.4315 cell



Expect More. Get More.

TomSmithLandandHomes.com

Information is believed to be accurate but not guaranteed.



LandReport
2011-2021
BEST
BROKERAGES

Call me today!

TARA WALKER SMITH, REALTOR®
Tara@TomSmithHomes.com
601.990.5070 office | 601.407.4315 cell



Expect More. Get More.

TomSmithLandandHomes.com

Information is believed to be accurate but not guaranteed.

Aerial Map



Call me today!

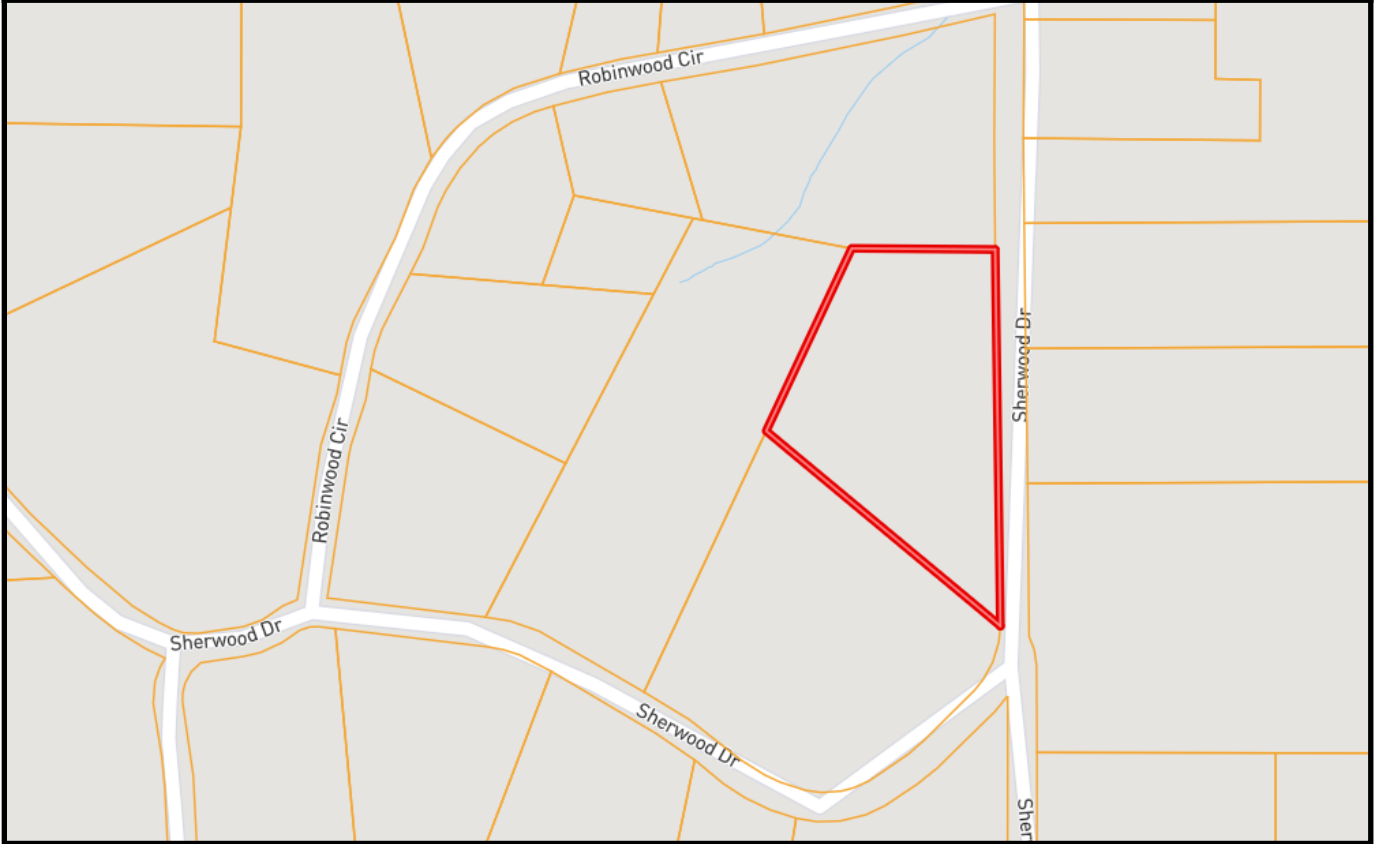
TARA WALKER SMITH, REALTOR®
Tara@TomSmithHomes.com
601.990.5070 office | 601.407.4315 cell



TomSmithLandandHomes.com

Information is believed to be accurate but not guaranteed.

Ownership Map



Call me today!

TARA WALKER SMITH, REALTOR®
Tara@TomSmithHomes.com
601.990.5070 office | 601.407.4315 cell

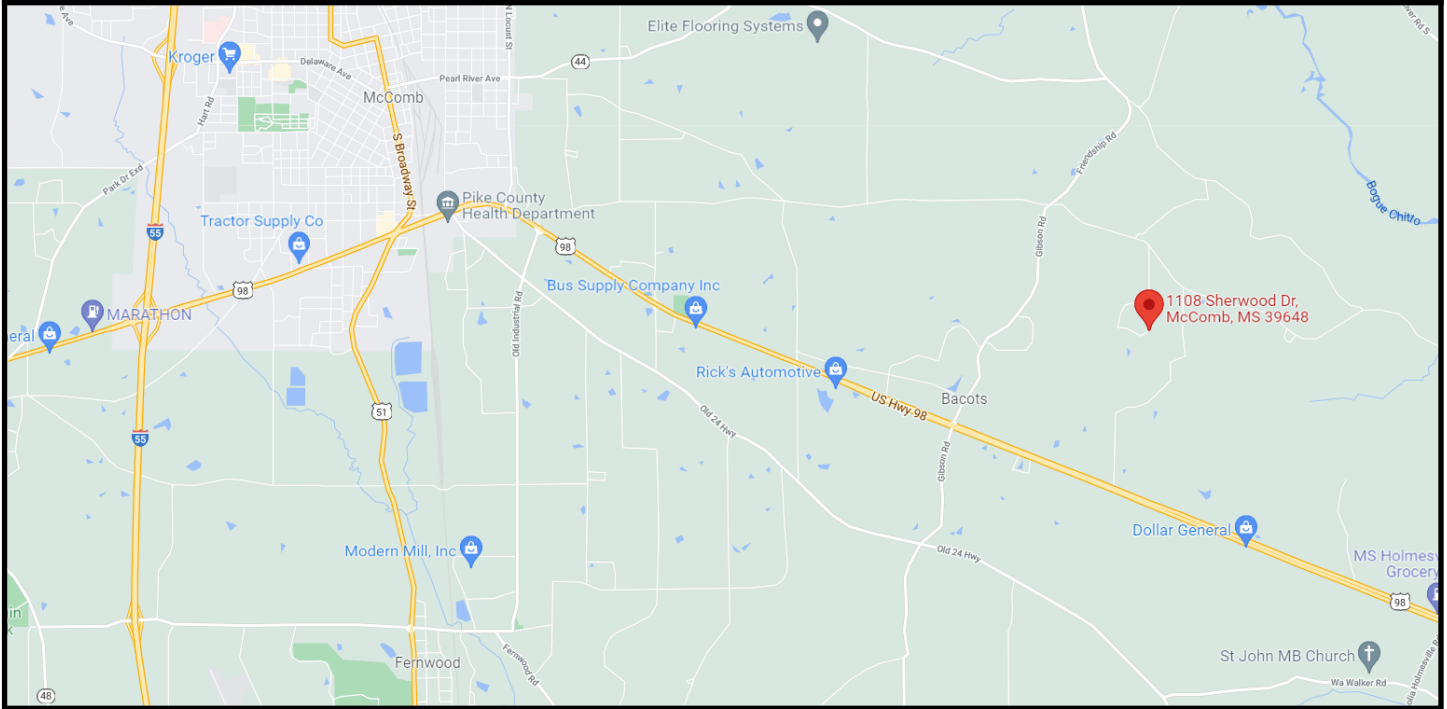


Expect More. Get More.

TomSmithLandandHomes.com

Information is believed to be accurate but not guaranteed.

Directional Map



Directions from I-55 S in McComb, MS: Take exit 15B for MS-24 W toward Liberty. Travel 0.3 miles and keep left at the fork and turn left onto MS-24 E. Continue on MS-24 E for 6.3 miles. Turn left onto Gibson Road. Travel 1.9 miles and take a slight right onto Holmesville Road. Travel 0.8 miles and turn right onto Sherwood Drive. The home will be on the right in 0.6 miles. Address: 1108 Sherwood Drive, McComb, MS 39648



Call me today!

TARA WALKER SMITH, REALTOR®
Tara@TomSmithHomes.com
601.990.5070 office | 601.407.4315 cell



TomSmithLandandHomes.com

Information is believed to be accurate but not guaranteed.