

Beautiful 4.18± Acre Homesite in Lamar County, MS



\$71,750

SPECTACULAR RESIDENTIAL ACREAGE! This 4.18± acres is conveniently located near Highway 98 and all the amenities of Hattiesburg, MS! Plenty of cleared homesites to build your dream home. The property has plenty of hardwoods and pines around the property to add an extra layer of privacy. Located in the Sumrall School District, this property benefits from “country living” while maintaining a convenient distance from plenty of city amenities. Additionally this property hosts a small pond! Check out this fantastic homesite today!

Directions from Hattiesburg, MS: Starting at the intersection of I-59 and US-98, travel west on US-98W, travel 12.3 miles turn left onto Warren Lott Rd., travel .4 miles the property will be on the left.



Call me today!

PRESTON SMITH, MANAGING BROKER
Preston@TomSmithLand.com
601.990.5070 office | 601.209.7150 cell



TomSmithLandandHomes.com

Information is believed to be accurate but not guaranteed.



call me today!

PRESTON SMITH, MANAGING BROKER
Preston@TomSmithLand.com
601.990.5070 office | 601.209.7150 cell



TomSmithLandandHomes.com

Information is believed to be accurate but not guaranteed.



call me today!



PRESTON SMITH, MANAGING BROKER
Preston@TomSmithLand.com
601.990.5070 office | 601.209.7150 cell



TomSmithLandandHomes.com

Information is believed to be accurate but not guaranteed.

Aerial Map



Call me today!

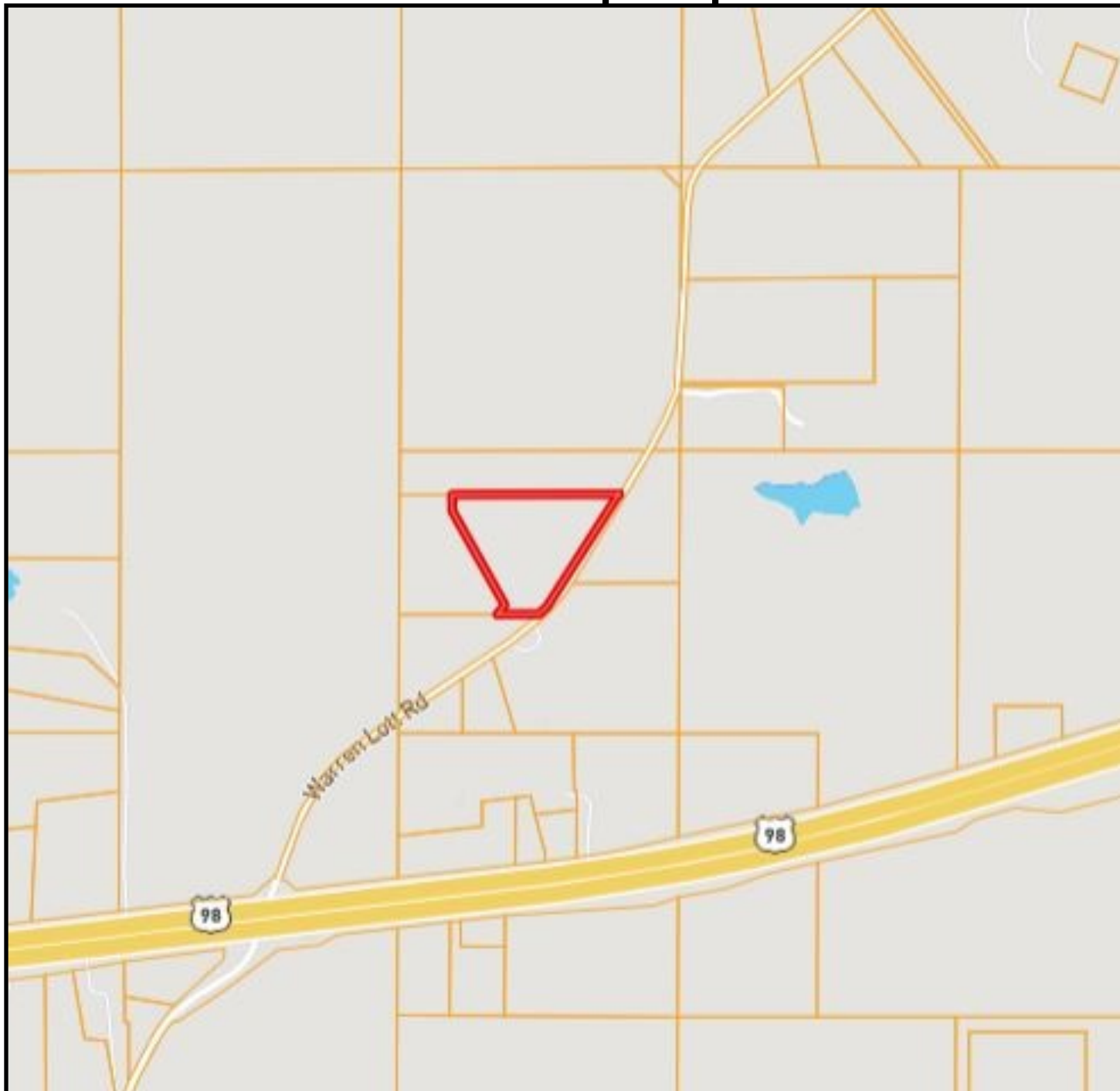
PRESTON SMITH, MANAGING BROKER
Preston@TomSmithLand.com
601.990.5070 office | 601.209.7150 cell



TomSmithLandandHomes.com

Information is believed to be accurate but not guaranteed.

Ownership Map



Call me today!

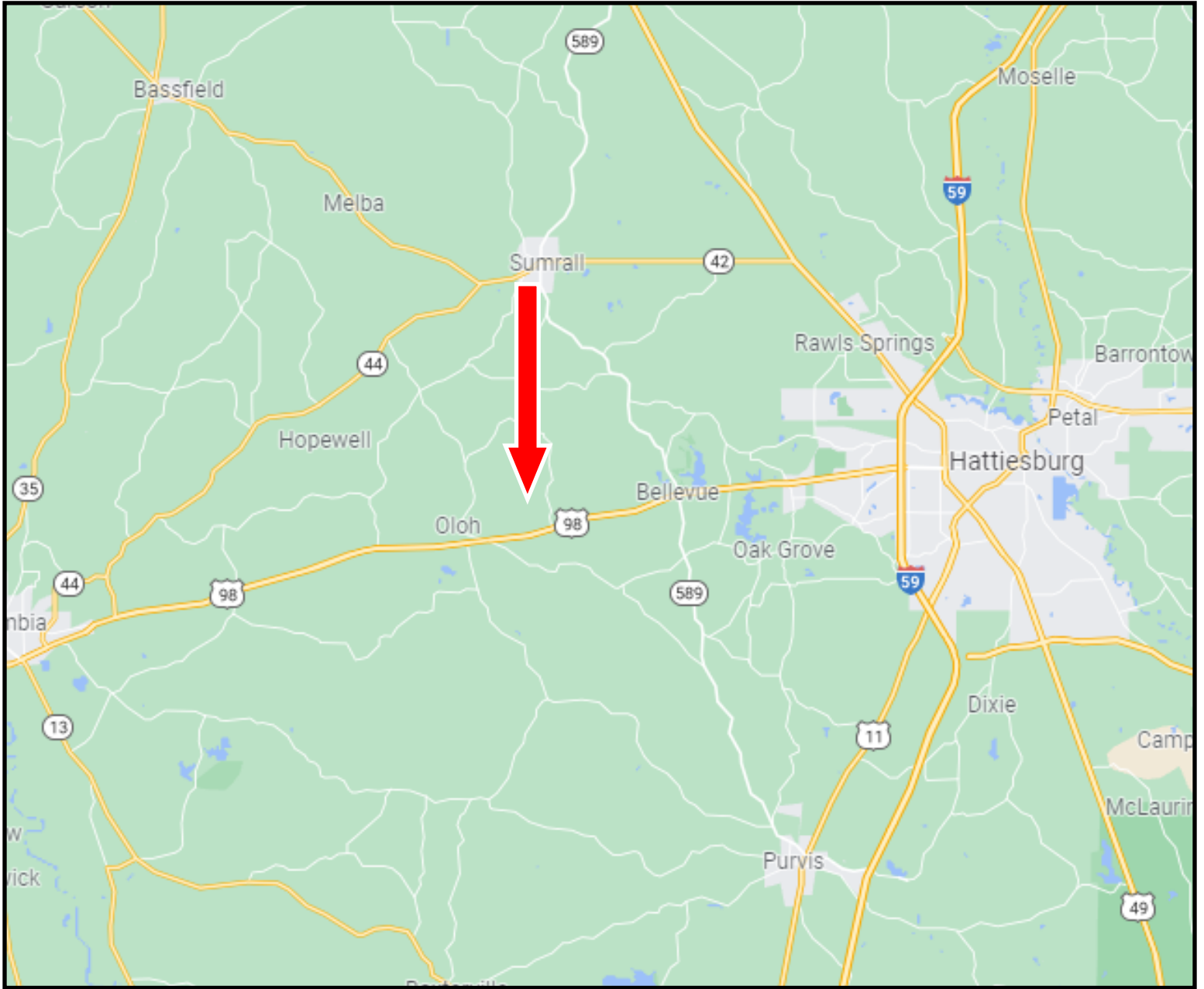
PRESTON SMITH, MANAGING BROKER
Preston@TomSmithLand.com
601.990.5070 office | 601.209.7150 cell



TomSmithLandandHomes.com

Information is believed to be accurate but not guaranteed.

Directional Map



Directions from Hattiesburg, MS: Starting at the intersection of I-59 and US-98, travel west on US-98W, travel 12.3 miles turn left onto Warren Lott Rd., travel .4 miles the property will be on the left.



Call me today!

PRESTON SMITH, MANAGING BROKER
Preston@TomSmithLand.com
601.990.5070 office | 601.209.7150 cell



TomSmithLandandHomes.com

Information is believed to be accurate but not guaranteed.