

3 Residential Lots Marshall County, MS



Take your pick of Lot 3, 4 or 5. These Marshall County, MS lots are located just off Hwy 178 on Waites Road between Holly Springs and Lake Center near Interstate 22. Access is with a written easement. Zoning permits mobile homes. Lots 3 and 4 are 2.00+/- acres and Lot 5 is 1.50+/- acres. Call Tom today!!

Directions: From the Holly Springs, MS square take Van Dorn Avenue/Hwy 178 east five miles to Waites Road. Turn left and drive ¼ mile to driveway on the left.



call me today!

TOM WISEMAN, MANAGING BROKER
TWiseman@TomSmithLand.com
662.317.0467



TomSmithLandandHomes.com

Information is believed to be accurate but not guaranteed.

AERIAL MAP



Click [HERE](#) for interactive link



TOM WISEMAN, MANAGING BROKER
TWiseman@TomSmithLand.com
662.317.0467



TomSmithLandandHomes.com

Information is believed to be accurate but not guaranteed.

PROPERTY MAP



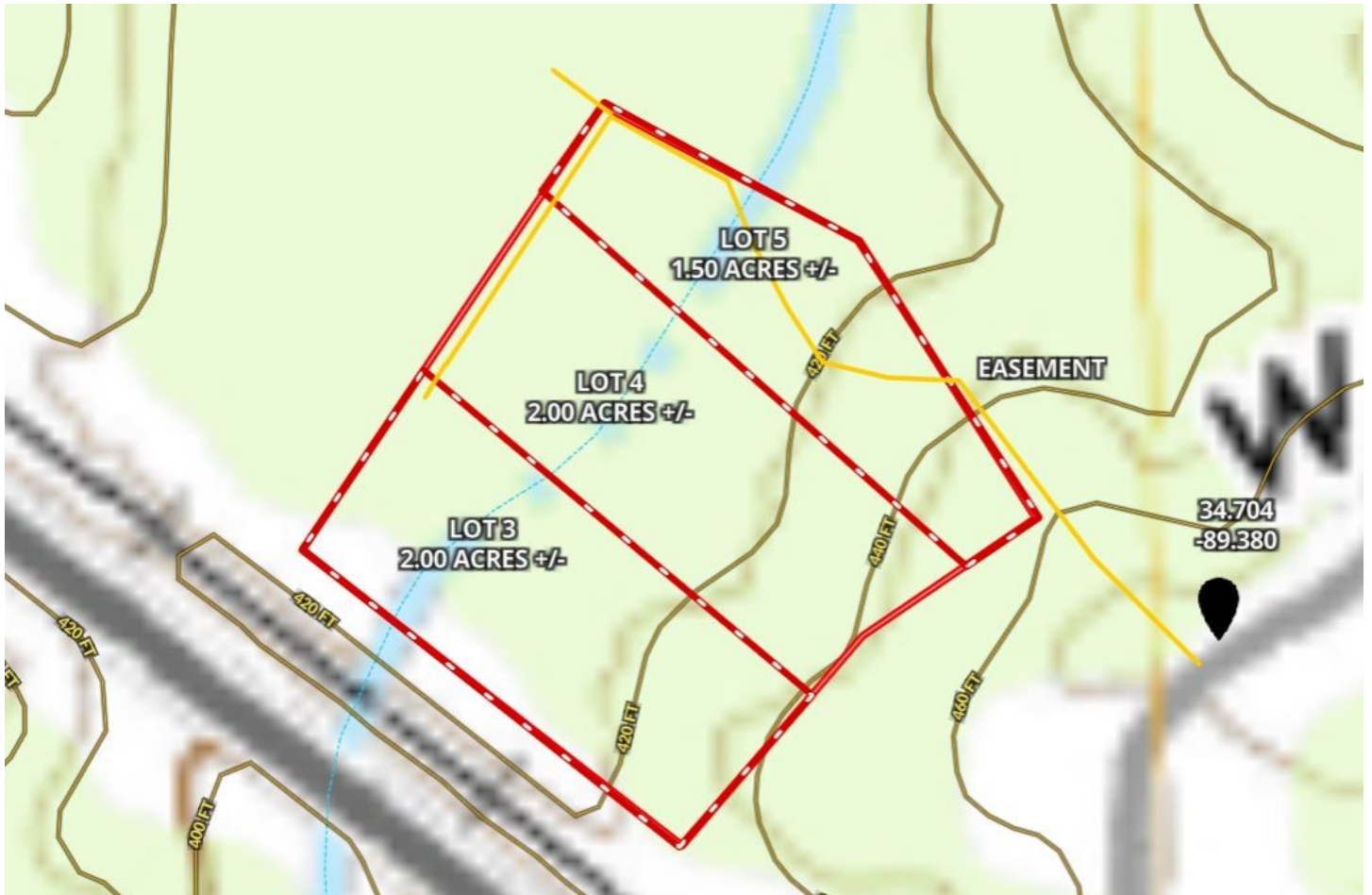
TOM WISEMAN, MANAGING BROKER
TWiseman@TomSmithLand.com
662.317.0467



TomSmithLandandHomes.com

Information is believed to be accurate but not guaranteed.

TOPO MAP



TOM WISEMAN, MANAGING BROKER
TWiseman@TomSmithLand.com
662.317.0467



Expect More. Get More.

TomSmithLandandHomes.com

Information is believed to be accurate but not guaranteed.

FLOOD MAP



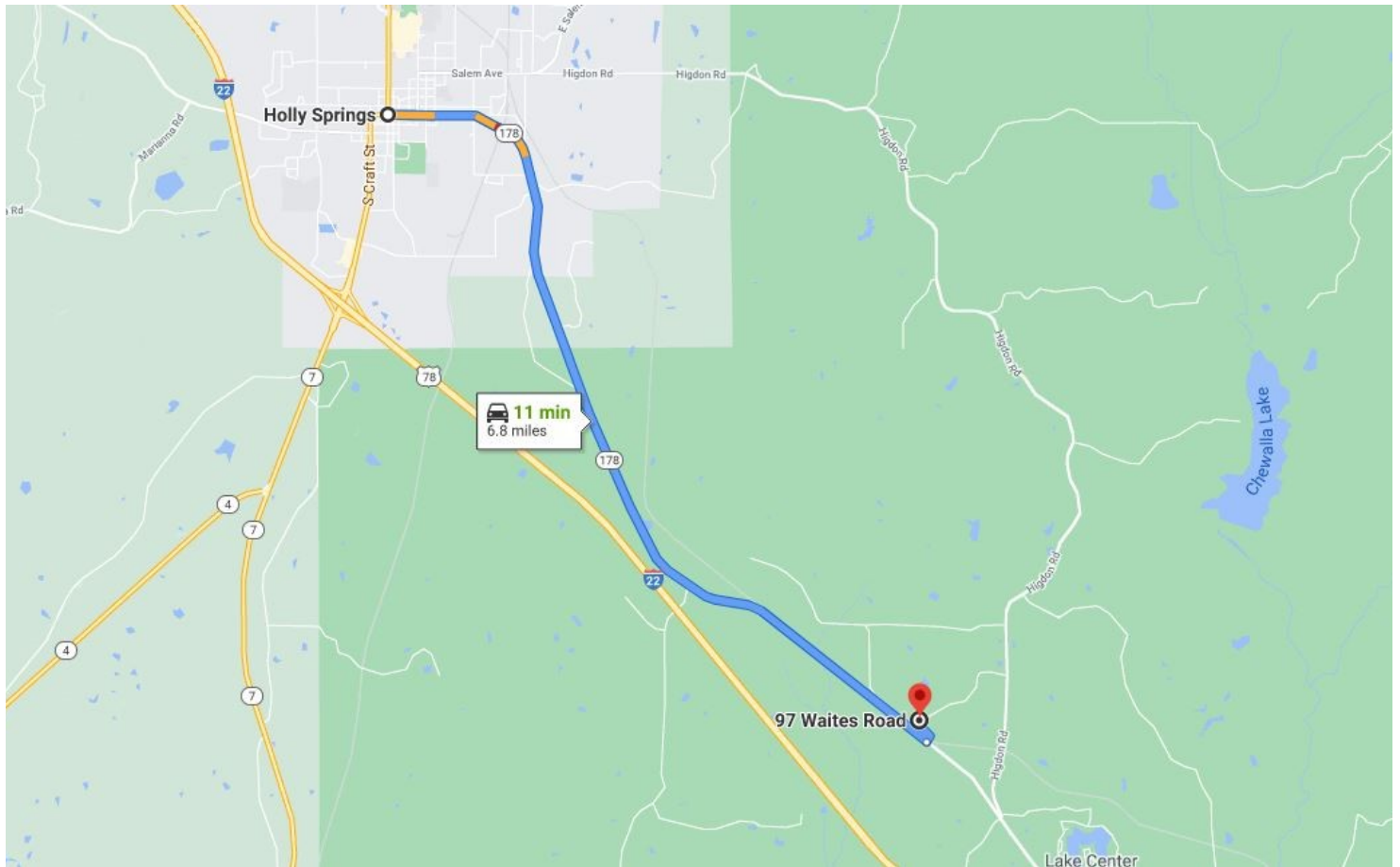
TOM WISEMAN, MANAGING BROKER
TWiseman@TomSmithLand.com
662.317.0467



TomSmithLandandHomes.com

Information is believed to be accurate but not guaranteed.

DIRECTIONAL MAP



Directions: From the Holly Springs, MS square take Van Dorn Avenue/Hwy 178 east five miles to Waites Road. Turn left and drive ¼ mile to driveway on the left.



TOM WISEMAN, MANAGING BROKER
TWiseman@TomSmithLand.com
662.317.0467



TomSmithLandandHomes.com

Information is believed to be accurate but not guaranteed.