

2 Wooded Lots Marshall County, MS



Looking to build? Take your pick of Lot 3 containing 2.36 acres +/- or Lot 4 containing 1.61 acres +/- . These Marshall County, MS lots are located just off Hwy 178 on Waites Road between Holly Springs and Lake Center near Interstate 22. Electricity is available at Waites Road. Access is with a written easement. Zoning permits mobile homes. Call Tom today!!

Directions: From the Holly Springs, MS square take Van Dorn Avenue/Hwy 178 east five miles to Waites Road. Turn left and travel ¼ mile to driveway on the left. Lots are accessed by an easement.



call me today!

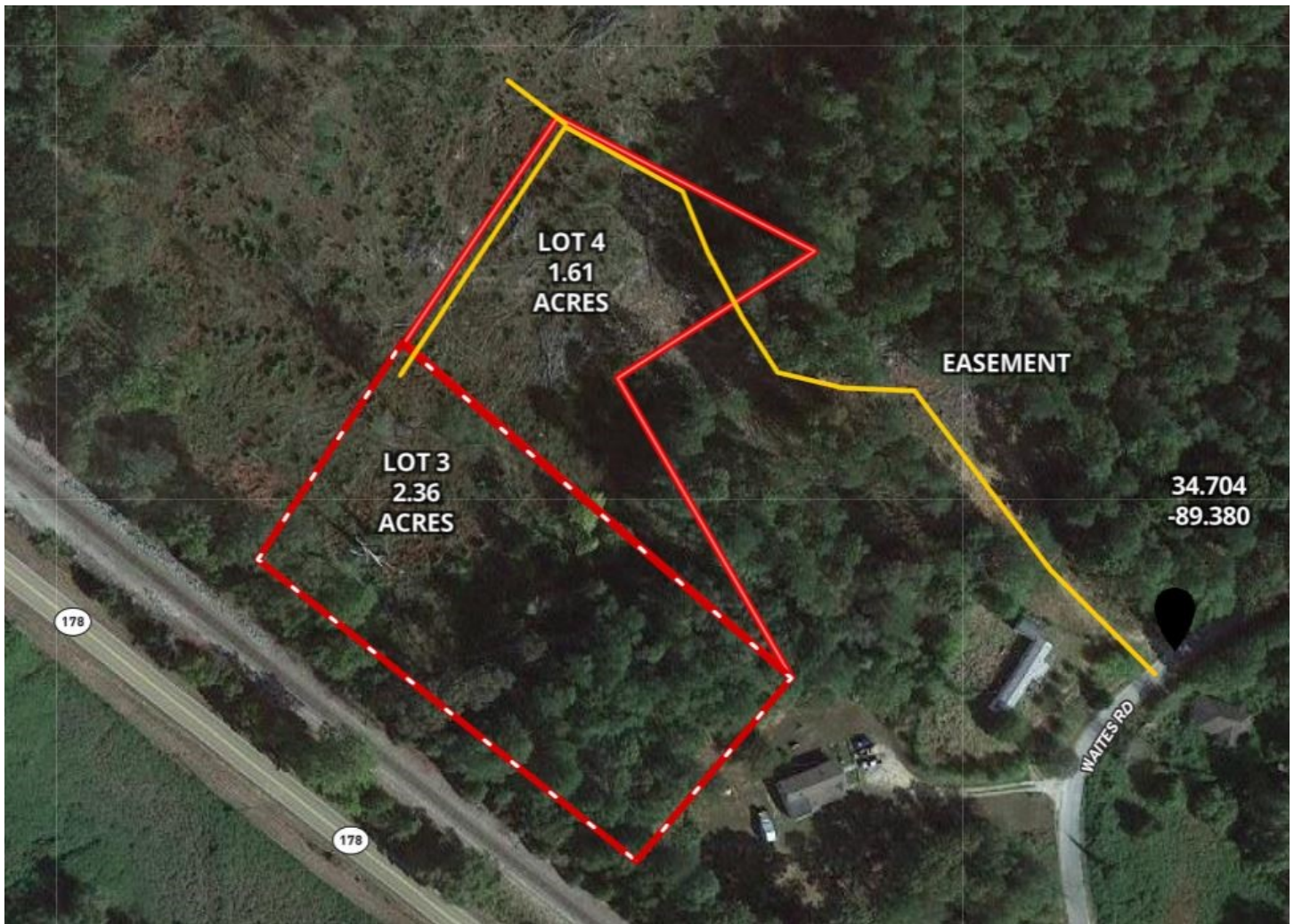
TOM WISEMAN, MANAGING BROKER
TWiseman@TomSmithLand.com
662.317.0467



TomSmithLandandHomes.com

Information is believed to be accurate but not guaranteed.

AERIAL MAP



TOM WISEMAN, MANAGING BROKER
TWiseman@TomSmithLand.com
662.317.0467

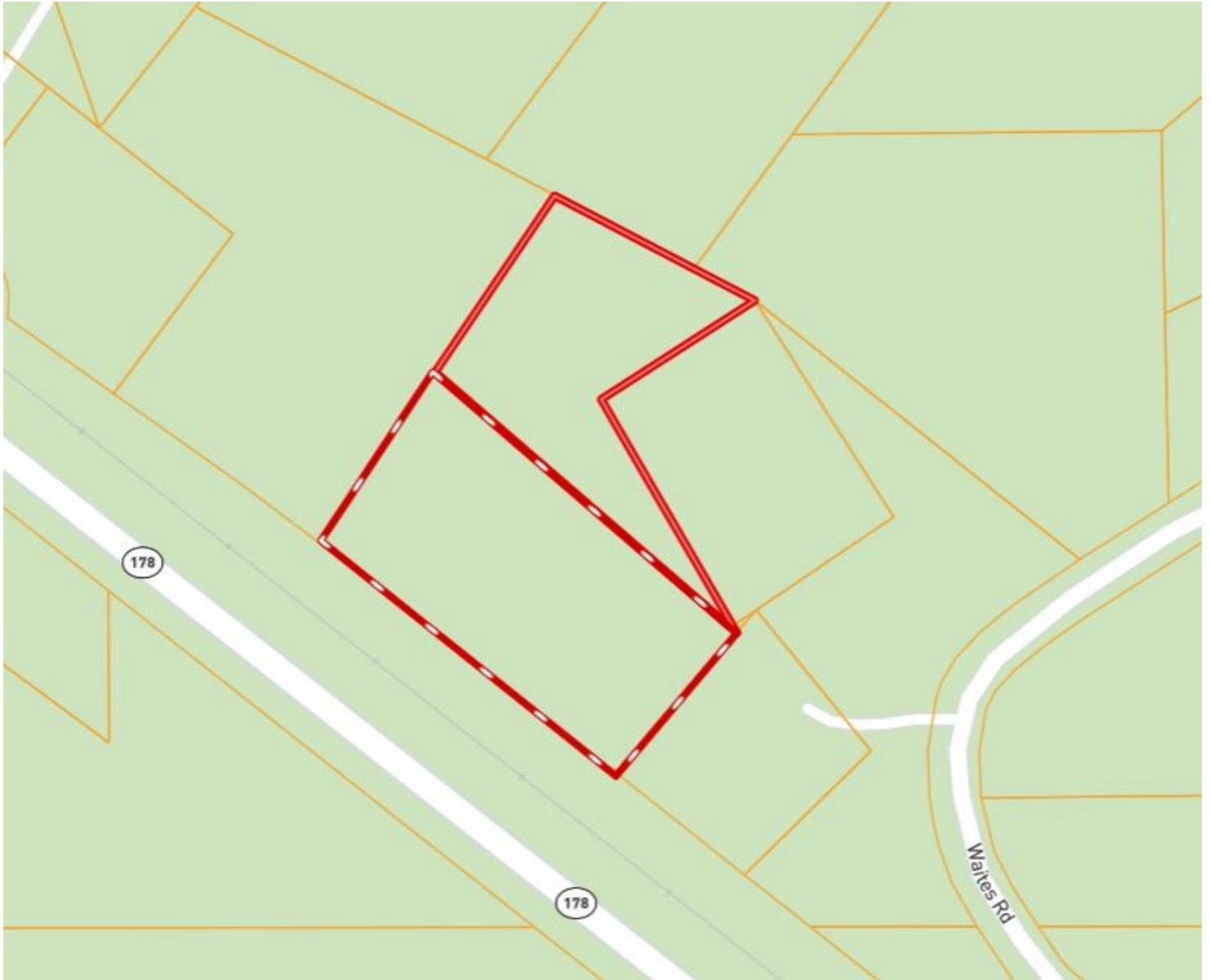


Expect More. Get More.

TomSmithLandandHomes.com

Information is believed to be accurate but not guaranteed.

PROPERTY MAP



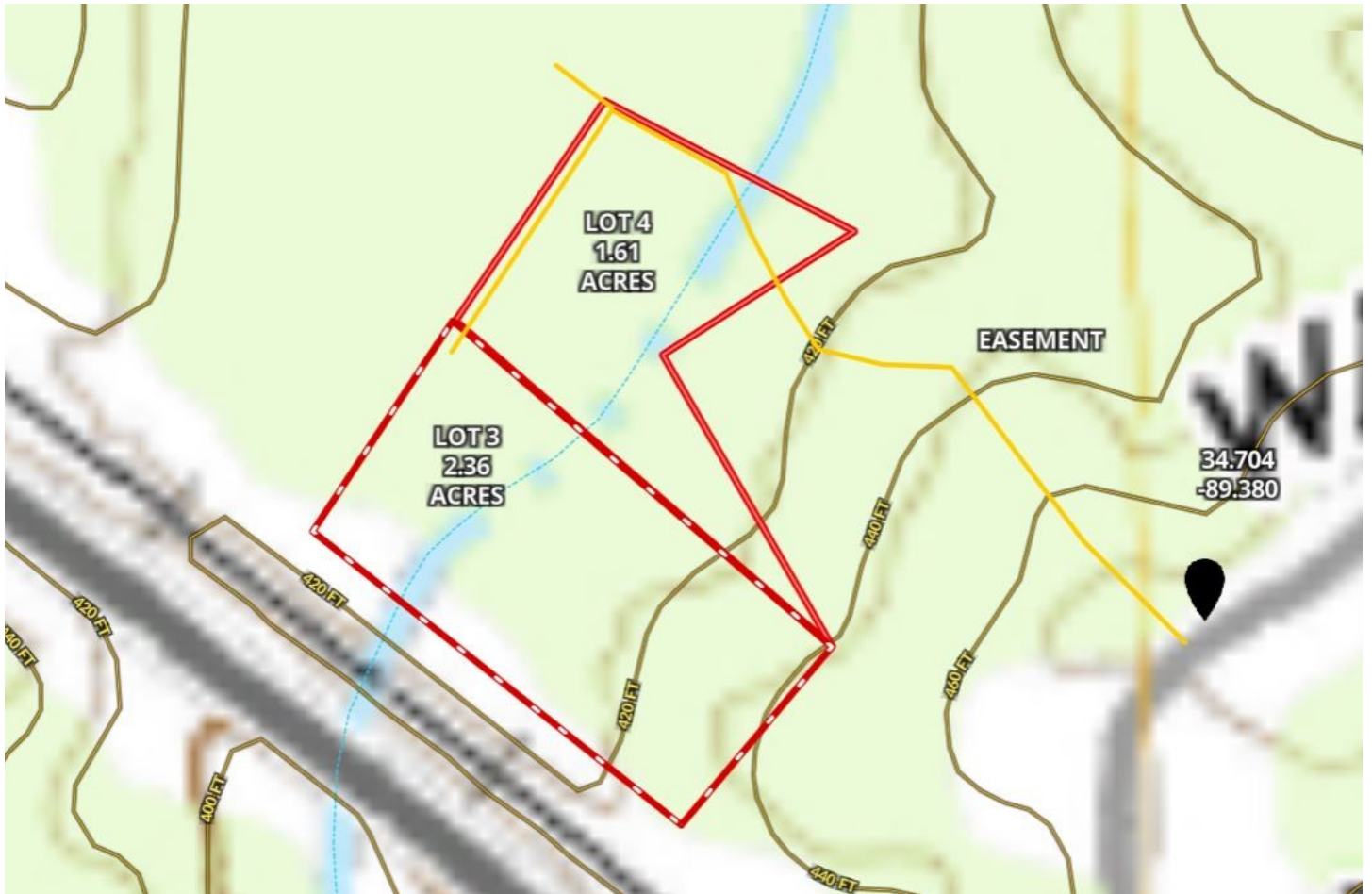
TOM WISEMAN, MANAGING BROKER
TWiseman@TomSmithLand.com
662.317.0467



TomSmithLandandHomes.com

Information is believed to be accurate but not guaranteed.

TOPO MAP



TOM WISEMAN, MANAGING BROKER
TWiseman@TomSmithLand.com
662.317.0467



Expect More. Get More.

TomSmithLandandHomes.com

Information is believed to be accurate but not guaranteed.

FLOOD MAP



TOM WISEMAN, MANAGING BROKER
TWiseman@TomSmithLand.com
662.317.0467

101 Main Street West | New Albany, MS 38652



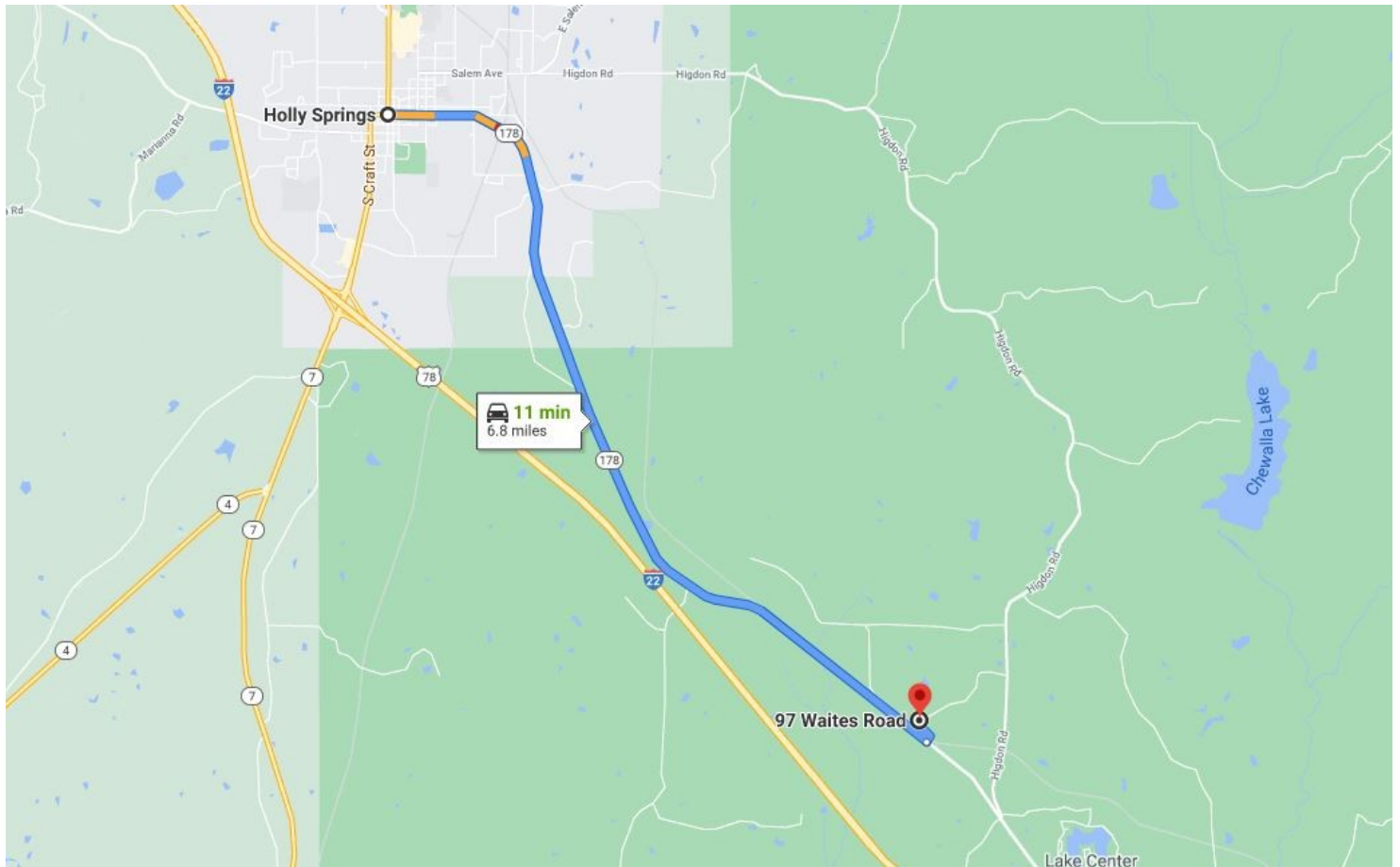
Expect More. Get More.



TomSmithLandandHomes.com

Information is believed to be accurate but not guaranteed.

DIRECTIONAL MAP



Directions: From the Holly Springs, MS square take Van Dorn Avenue/Hwy 178 east five miles to Waites Road. Turn left and travel ¼ mile to driveway on the left. Lots are access by an easement.



TOM WISEMAN, MANAGING BROKER
TWiseman@TomSmithLand.com
662.317.0467



TomSmithLandandHomes.com

Information is believed to be accurate but not guaranteed.