

Commercial Building on US-49S in Rankin County, MS

4183 Highway 49 South, Florence, MS



\$224,750

This commercial property is ready for your business! The 1.45± acre property hosts a 70x30 metal building with roll up doors and an attached tractor/equipment shed. The 3,000/sqft building has a bathroom and office space. The property also features a large cleared lot that joins the building with several expansion opportunities with plenty of parking available. The building is conveniently located right of US-49S and only a few minutes from Florence, MS, and less than 30 minutes from Jackson, MS. Call Preston Smith for a showing today!

Directions from Florence, MS: Travel south on US-49S for 5.1 miles, turn right onto Dixie Rd, travel .6 miles and turn left onto property driveway, the property will be 800 feet on the right at 4183 Hwy 49S, Florence, MS.



Call me today!

PRESTON SMITH, MANAGING BROKER
Preston@TomSmithLand.com
601.990.5070 office | 601.209.7150 cell



Expect More. Get More.

TomSmithLandandHomes.com

Information is believed to be accurate but not guaranteed.



Call me today!

PRESTON SMITH, MANAGING BROKER
Preston@TomSmithLand.com
601.990.5070 office | 601.209.7150 cell



Expect More. Get More.

TomSmithLandandHomes.com

Information is believed to be accurate but not guaranteed.





Call me today!

PRESTON SMITH, MANAGING BROKER
Preston@TomSmithLand.com
601.990.5070 office | 601.209.7150 cell



TomSmithLandandHomes.com

Information is believed to be accurate but not guaranteed.

Aerial Map



Call me today!

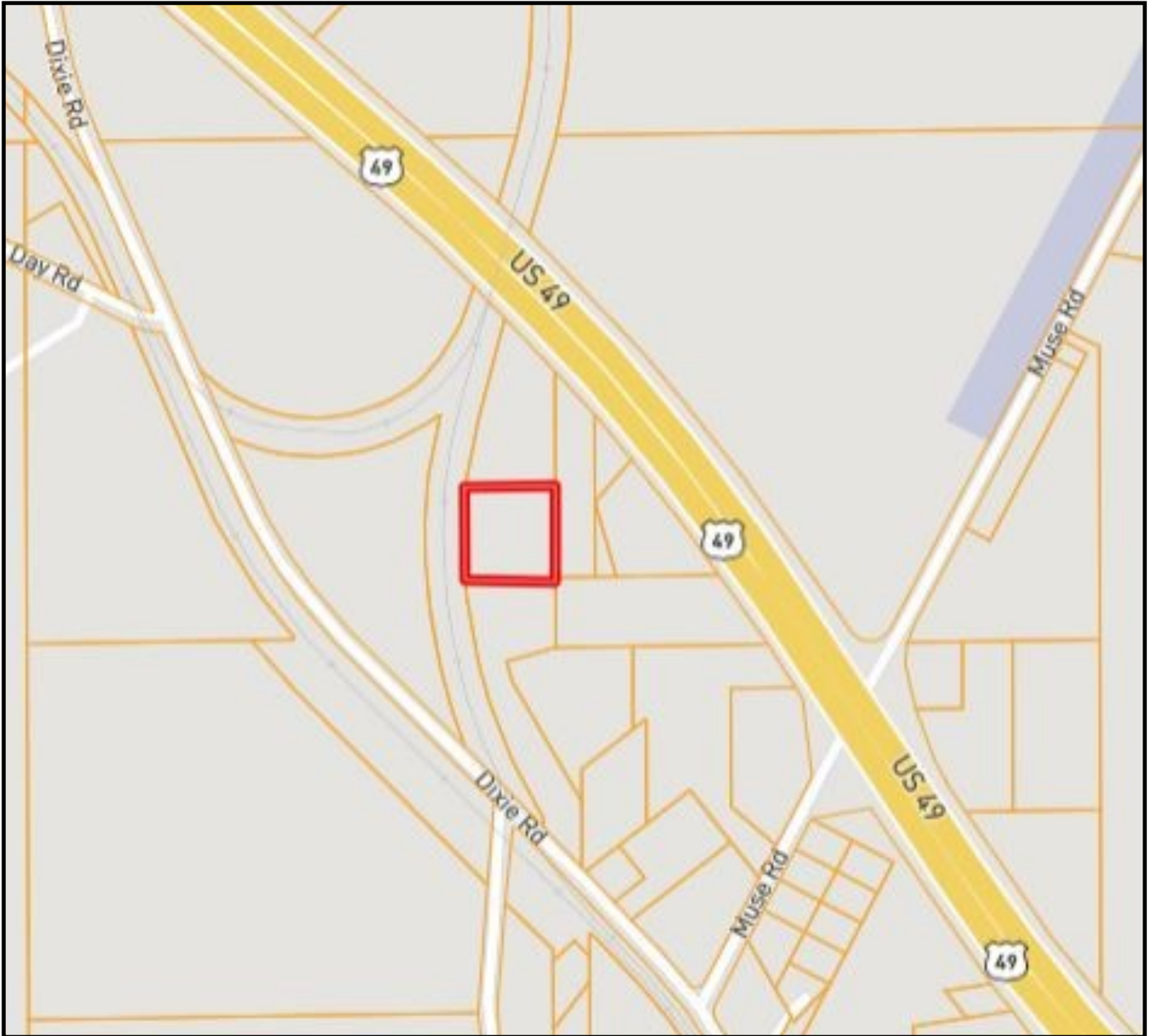
PRESTON SMITH, MANAGING BROKER
Preston@TomSmithLand.com
601.990.5070 office | 601.209.7150 cell



TomSmithLandandHomes.com

Information is believed to be accurate but not guaranteed.

Ownership Map



Call me today!



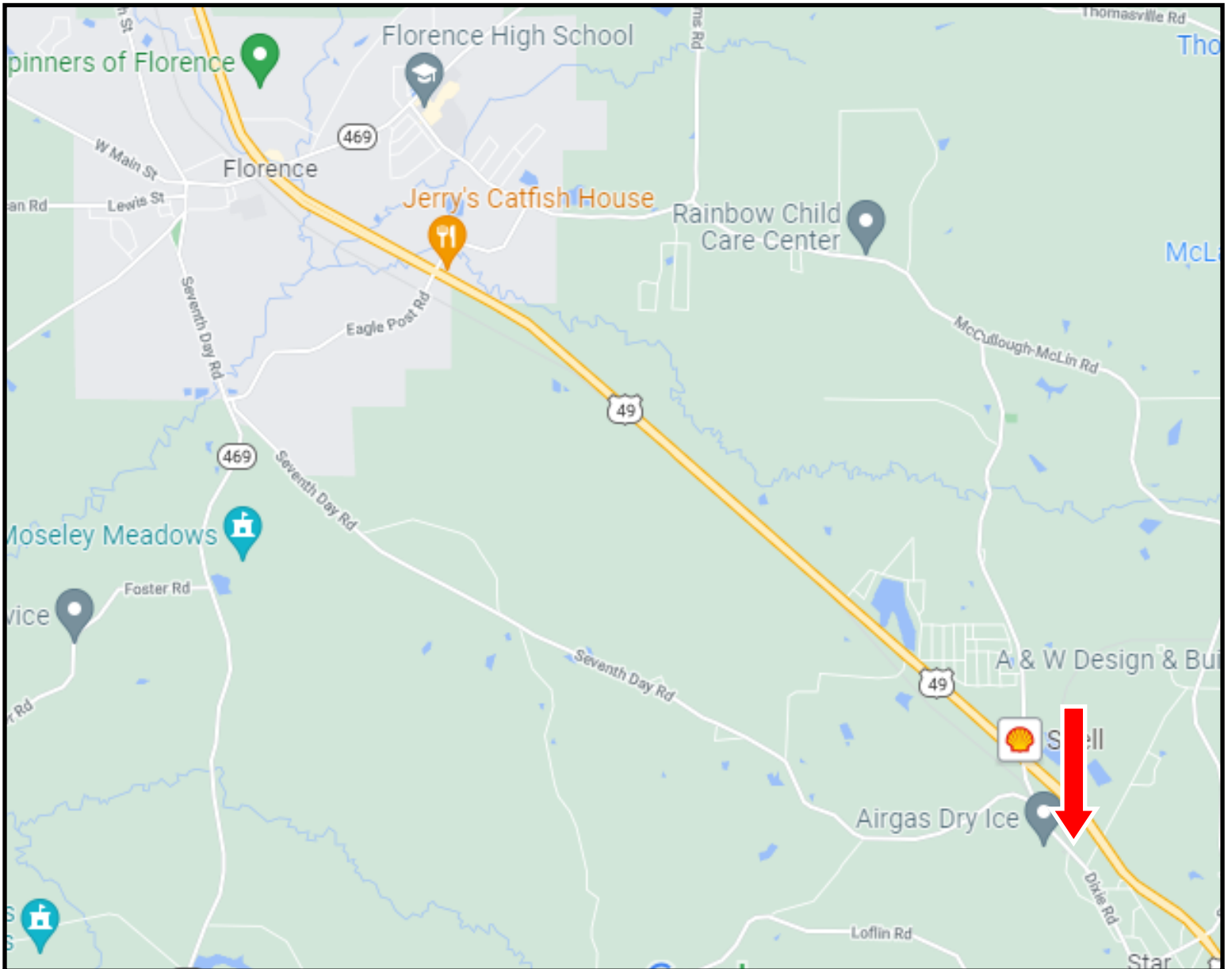
PRESTON SMITH, MANAGING BROKER
Preston@TomSmithLand.com
601.990.5070 office | 601.209.7150 cell



TomSmithLandandHomes.com

Information is believed to be accurate but not guaranteed.

Directional Map



Directions from Florence, MS: Travel south on US-49S for 5.1 miles, turn right onto Dixie Rd, travel .6 miles and turn left onto property driveway, the property will be 800 feet on the right at 4183 Hwy 49S, Florence, MS.



Call me today!

PRESTON SMITH, MANAGING BROKER
Preston@TomSmithLand.com
601.990.5070 office | 601.209.7150 cell



TomSmithLandandHomes.com

Information is believed to be accurate but not guaranteed.