

Custom Built Home on 9+/- Acres 56 Franks Drive, Sturgis, MS 39769



\$398,000

This spacious 3BD/4BA country home on 9+/- acres is conveniently located west of Starkville and just north of Sturgis in Oktibbeha County, MS. This home includes a new roof with an updated kitchen and primary bathroom. There is a detached two car garage, new flooring downstairs, living room with a large vaulted living area and gas fireplace, fixed wireless internet and Ring 360 camera system. The pasture is fenced behind the house. There is also a fenced pasture across the road with a barn and utilities. Enjoy the country view from your large front porch! Call Michael today to schedule a showing.

Directions From the intersection of Sturgis Westpoint Road and Hwy 12 in Sturgis: Travel north 3.4 miles on Sturgis Westpoint Road. Turn left onto Big Creek Road and travel 1 mile. Turn right on Franks Drive. The property will be the first house on the right.

[GOOGLE MAPS LINK](#)



Call me today!

MICHAEL COOPER, REALTOR®

MCooper@TomSmithLand.com

662.268.6333 office | 662.285.8686 cell

135 Jefferson Street | Starkville, MS 39759



Expect More. Get More.

TomSmithLandandHomes.com

Information is believed to be accurate but not guaranteed.



Call me today!

MICHAEL COOPER, REALTOR®
MCooper@TomSmithLand.com
662.268.6333 office | 662.285.8686 cell
135 Jefferson Street | Starkville, MS 39759



TomSmithLandandHomes.com

Information is believed to be accurate but not guaranteed.



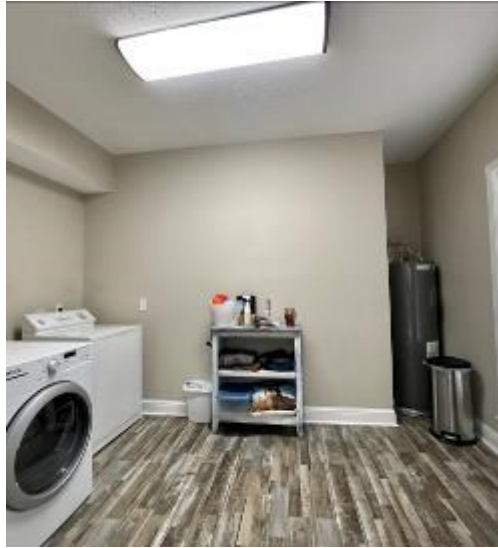
Call me today!

MICHAEL COOPER, REALTOR®
MCooper@TomSmithLand.com
662.268.6333 office | 662.285.8686 cell
135 Jefferson Street | Starkville, MS 39759



TomSmithLandandHomes.com

Information is believed to be accurate but not guaranteed.



Call me today!

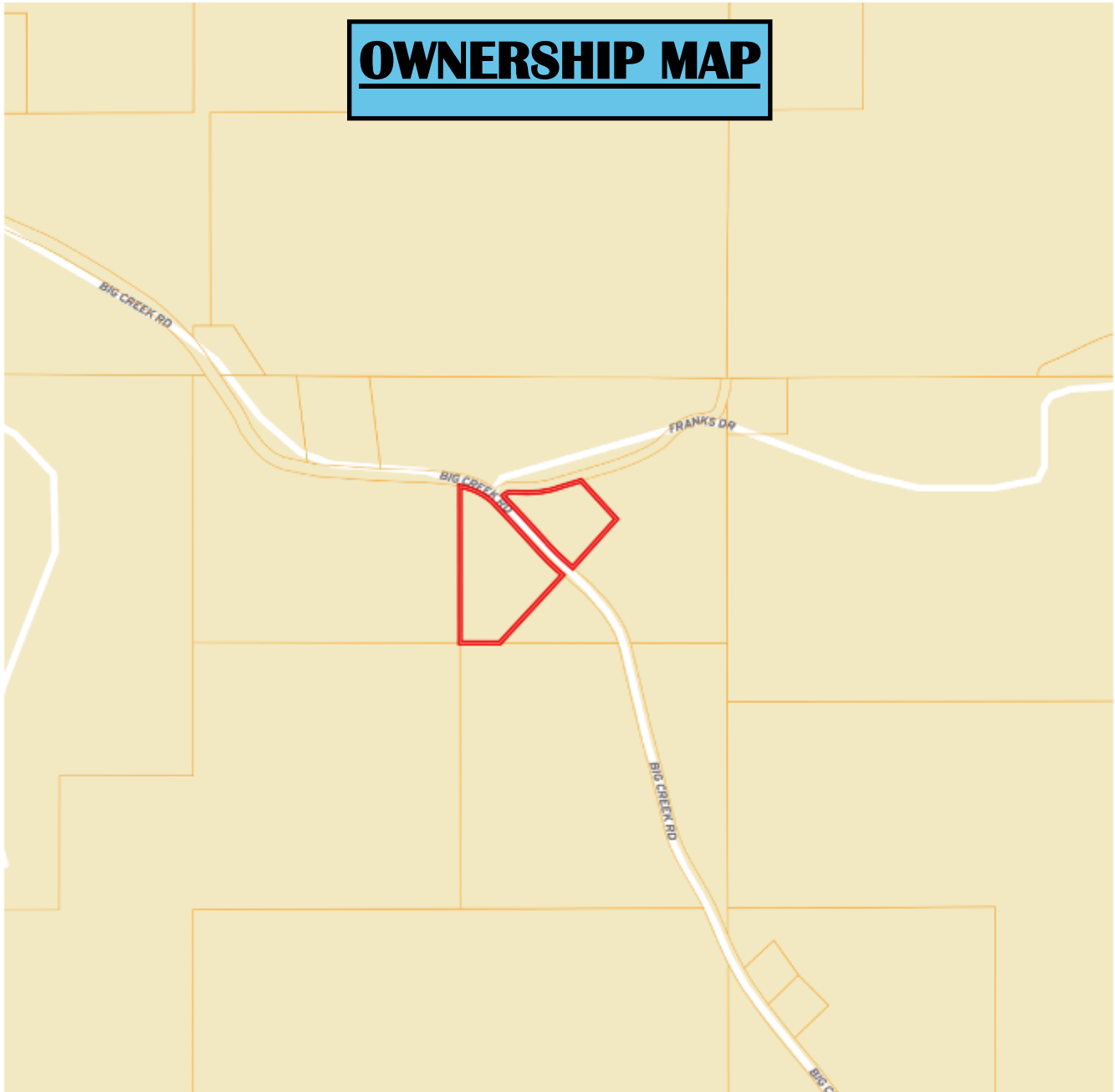
MICHAEL COOPER, REALTOR®
MCooper@TomSmithLand.com
662.268.6333 office | 662.285.8686 cell
135 Jefferson Street | Starkville, MS 39759



TomSmithLandandHomes.com

Information is believed to be accurate but not guaranteed.

OWNERSHIP MAP



Call me today!

MICHAEL COOPER, REALTOR®
MCooper@TomSmithLand.com
662.268.6333 office | 662.285.8686 cell
135 Jefferson Street | Starkville, MS 39759

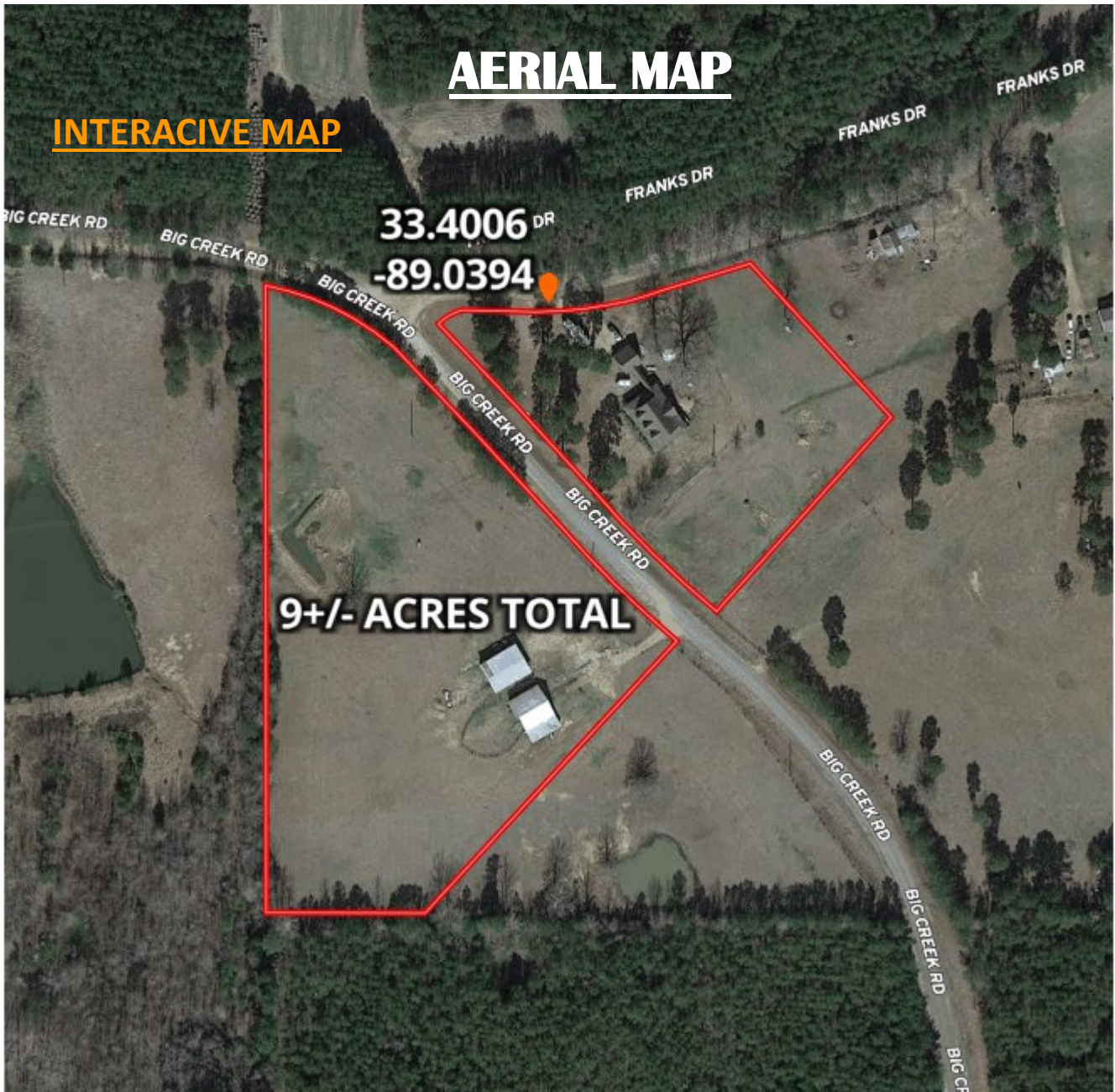


TomSmithLandandHomes.com

Information is believed to be accurate but not guaranteed.

AERIAL MAP

INTERACTIVE MAP



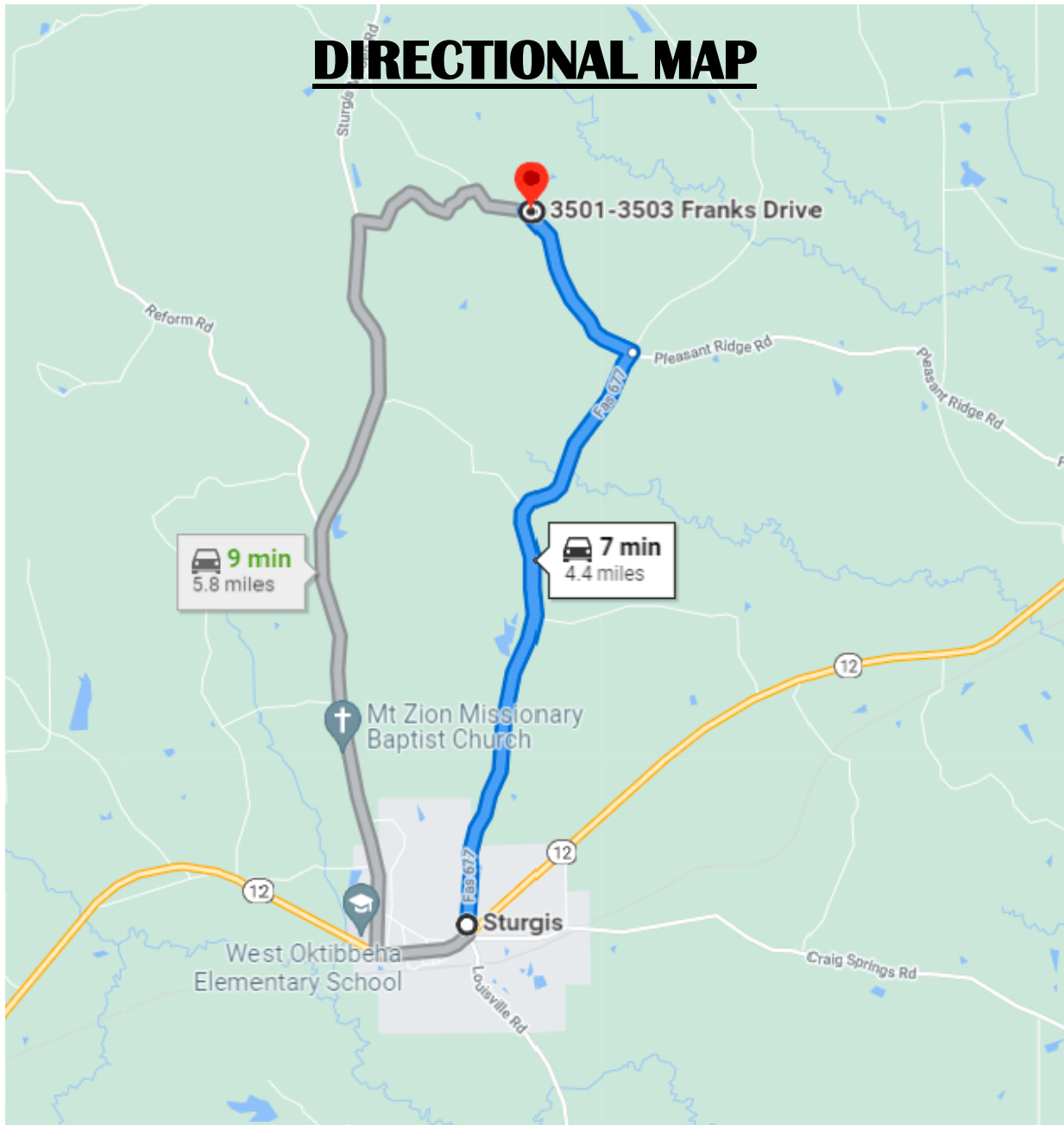
Call me today!

MICHAEL COOPER, REALTOR®
MCooper@TomSmithLand.com
662.268.6333 office | 662.285.8686 cell
135 Jefferson Street | Starkville, MS 39759



TomSmithLandandHomes.com

Information is believed to be accurate but not guaranteed.



DIRECTIONAL MAP

Directions From the intersection of Sturgis Westpoint Road and Hwy 12 in Sturgis: Travel north 3.4 miles on Sturgis Westpoint Road. Turn left onto Big Creek Road and travel 1 mile. Turn right on Franks Drive. The property will be the first house on the right. **Address: 56 Franks Drive, Sturgis, MS 39769**

[GOOGLE MAPS LINK](#)

Call me today!

MICHAEL COOPER, REALTOR®
 MCooper@TomSmithLand.com
 662.268.6333 office | 662.285.8686 cell
 135 Jefferson Street | Starkville, MS 39759



TomSmithLandandHomes.com

Information is believed to be accurate but not guaranteed.