



Ranch Style Home on 2+/- Acres Lincoln County, MS



34 Rogers Lane SE Brookhaven, MS 39601

Brand new to the market! This three bedroom, two bath home is situated on 2+/- acres in Lincoln County, MS. This brick exterior ranch style home features a brand new roof, fresh paint, fresh cabinetry in the kitchen, hardwood floors through the living areas, and a nice back deck for entertaining. This open floor plan is a perfect starter home allowing room to grow, as well as, gather with friends and family in the spacious living and dining area. The built in provides many possibilities for home office, a display for collectibles & China or coffee bar. The two car carport allows a place to park out of the weather. Make sure you check out the storage area under the carport as well; you can never go wrong with extra storage. Though the home sits in a quiet country setting, it's less than a mile from Dollar General, as well as, a quick drive to downtown Brookhaven where you'll find grocery stores, hardware stores, fast food, and more. The property is in Brookhaven School District. Call Sabrina today to schedule your private showing!

Directions from Hwy 51 S in Brookhaven, MS: Turn left and travel east on Hwy 84. Travel 4 miles and turn right onto Rogers Lane. The property is on the right in 0.2 miles.



call me today!

SABRINA WOLFF, REALTOR®
Sabrina@TomSmithHomes.com
601.990.5070 office | 601.754.3763 cell



TomSmithLandandHomes.com

Information is believed to be accurate but not guaranteed.



LandReport
2010-2021
AMERICAN
BEST
BROKERAGES

Call me today!

SABRINA WOLFE, REALTOR®
Sabrina@TomSmithHomes.com
601.990.5070 office | 601.754.3763 cell



TomSmithLandandHomes.com

Information is believed to be accurate but not guaranteed.



Call me today!

SABRINA WOLFE, REALTOR®
Sabrina@TomSmithHomes.com
601.990.5070 office | 601.754.3763 cell



TomSmithLandandHomes.com

Information is believed to be accurate but not guaranteed.

Aerial Map



call me today!

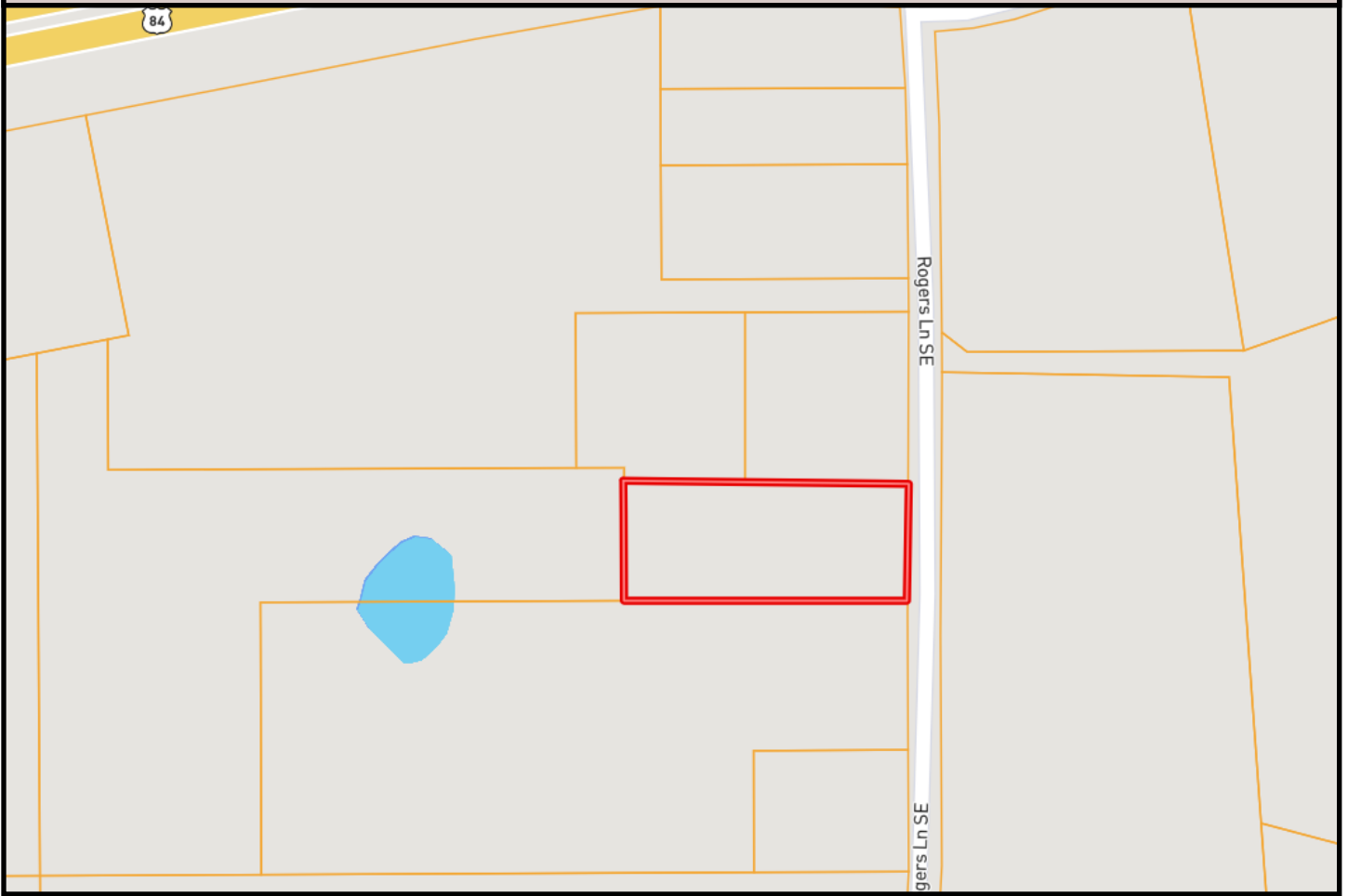
SABRINA WOLFF, REALTOR®
Sabrina@TomSmithHomes.com
601.990.5070 office | 601.754.3763 cell



TomSmithLandandHomes.com

Information is believed to be accurate but not guaranteed.

Ownership Map



call me today!

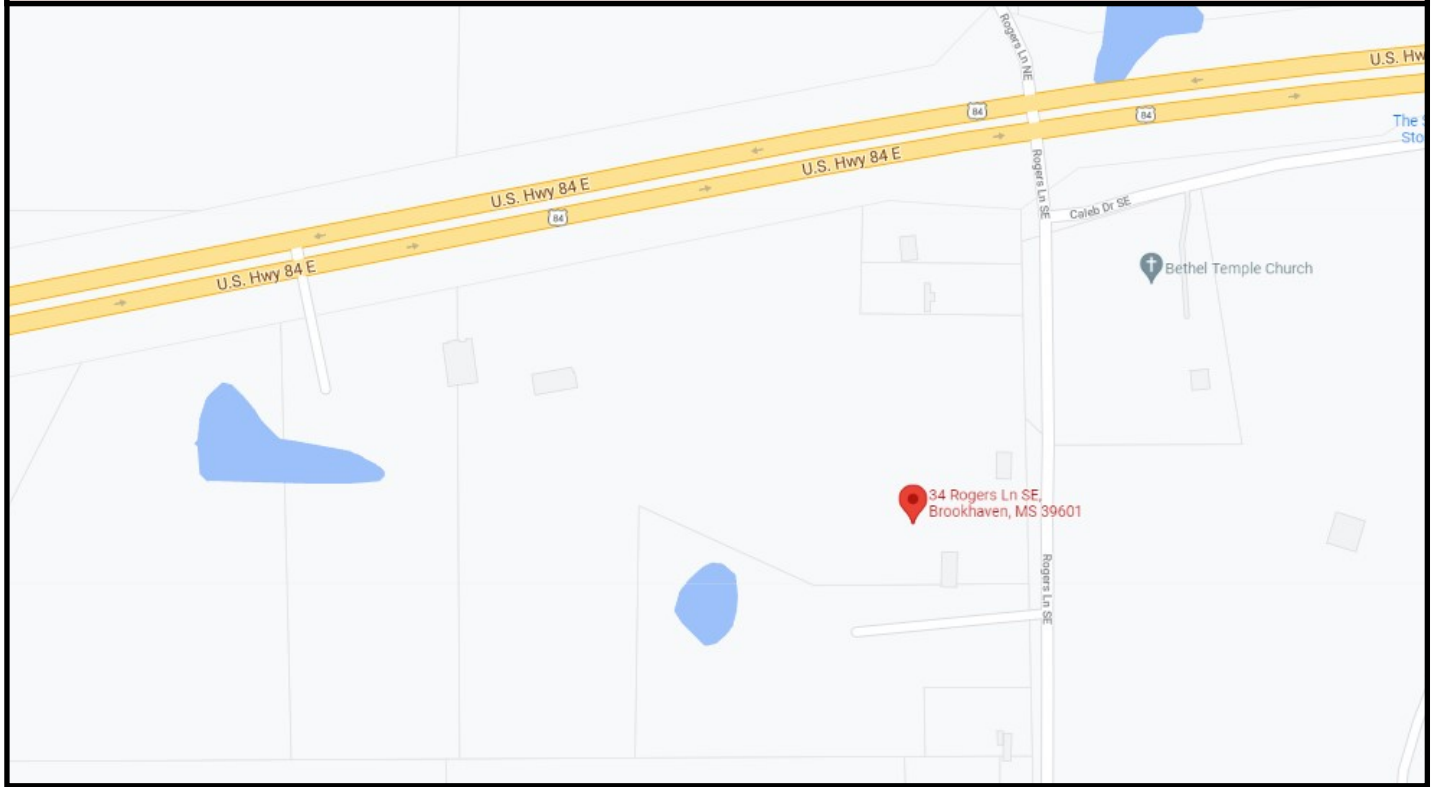
SABRINA WOLFF, REALTOR®
Sabrina@TomSmithHomes.com
601.990.5070 office | 601.754.3763 cell



TomSmithLandandHomes.com

Information is believed to be accurate but not guaranteed.

Directional Map



34 Rogers Lane SE Brookhaven, MS 39601

Directions from Hwy 51 S in Brookhaven, MS: Turn left and travel east on Hwy 84. Travel 4 miles and turn right onto Rogers Lane. The property is on the right in 0.2 miles.



call me today!

SABRINA WOLFF, REALTOR®
Sabrina@TomSmithHomes.com
601.990.5070 office | 601.754.3763 cell



TomSmithLandandHomes.com

Information is believed to be accurate but not guaranteed.