



Newly Renovated Home on 1+/- Acre Copeiah County, MS



2122 Reese Road Wesson, MS 39191

Don't miss this newly renovated four bedroom, two bath home in Copeiah County, MS. This property features 1+/- acres of land with a hilltop view, two sheds in the back of the property and distance between you, and your neighbor... sounds like country living to me! Just inside, you will find a spacious open floor plan fancied in shiplap, exposed brick, and beams, butcher block, granite, shaker style cabinetry, and did I mention this home is a split plan! You will find this one has been stripped down and brought back to life, brand new from floor to ceiling. A fresh light colored paint scheme throughout allows this home to be a blank canvas for your current home decor. The custom island in the kitchen provides extra storage, and as you make your way around to admire the custom vent hood be sure to give the lazy susan a spin. The additional space adjacent to the master bedroom allows many possibilities... nursery, office, or 5th bedroom. This property is in Hazlehurst School District and is located in Wesson, less than 10 miles to I-55. This one is turn key ready! Call Sabrina to schedule your private showing today.

Directions from I-55 N in Brookhaven, MS: Take Exit 51 and stay left onto Sylvarena Road. In 2.1 miles turn right onto Brown's Wells Road and travel 4.7 miles turn left onto Reese Road. The property is on your left in 0.3 miles. Address: 2122 Reese Road Wesson, MS 39191



call me today!

SABRINA WOLFF, REALTOR®
Sabrina@TomSmithHomes.com
601.990.5070 office | 601.754.3763 cell



TomSmithLandandHomes.com

Information is believed to be accurate but not guaranteed.



LandReport
2010-2021
AMERICAN
BEST
BROKERAGES

Call me today!

SABRINA WOLFE, REALTOR®
Sabrina@TomSmithHomes.com
601.990.5070 office | 601.754.3763 cell



TomSmithLandandHomes.com

Information is believed to be accurate but not guaranteed.



2010-2021
AMERICAN
BEST
BROKERAGES

Call me today!

SABRINA WOLFE, REALTOR®
Sabrina@TomSmithHomes.com
601.990.5070 office | 601.754.3763 cell



TomSmithLandandHomes.com

Information is believed to be accurate but not guaranteed.

Aerial Map



call me today!

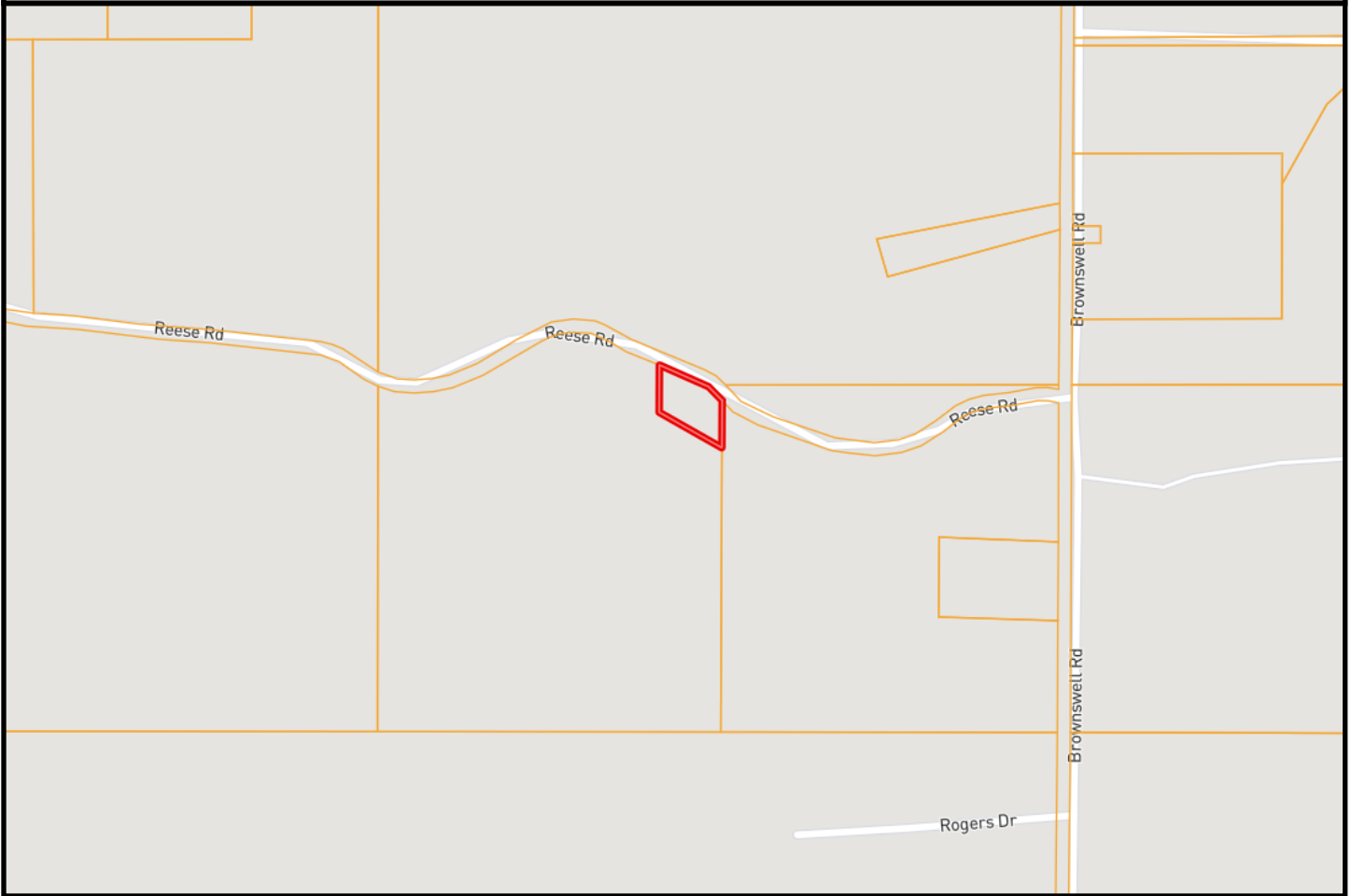
SABRINA WOLFF, REALTOR®
Sabrina@TomSmithHomes.com
601.990.5070 office | 601.754.3763 cell



TomSmithLandandHomes.com

Information is believed to be accurate but not guaranteed.

Ownership Map



Call me today!

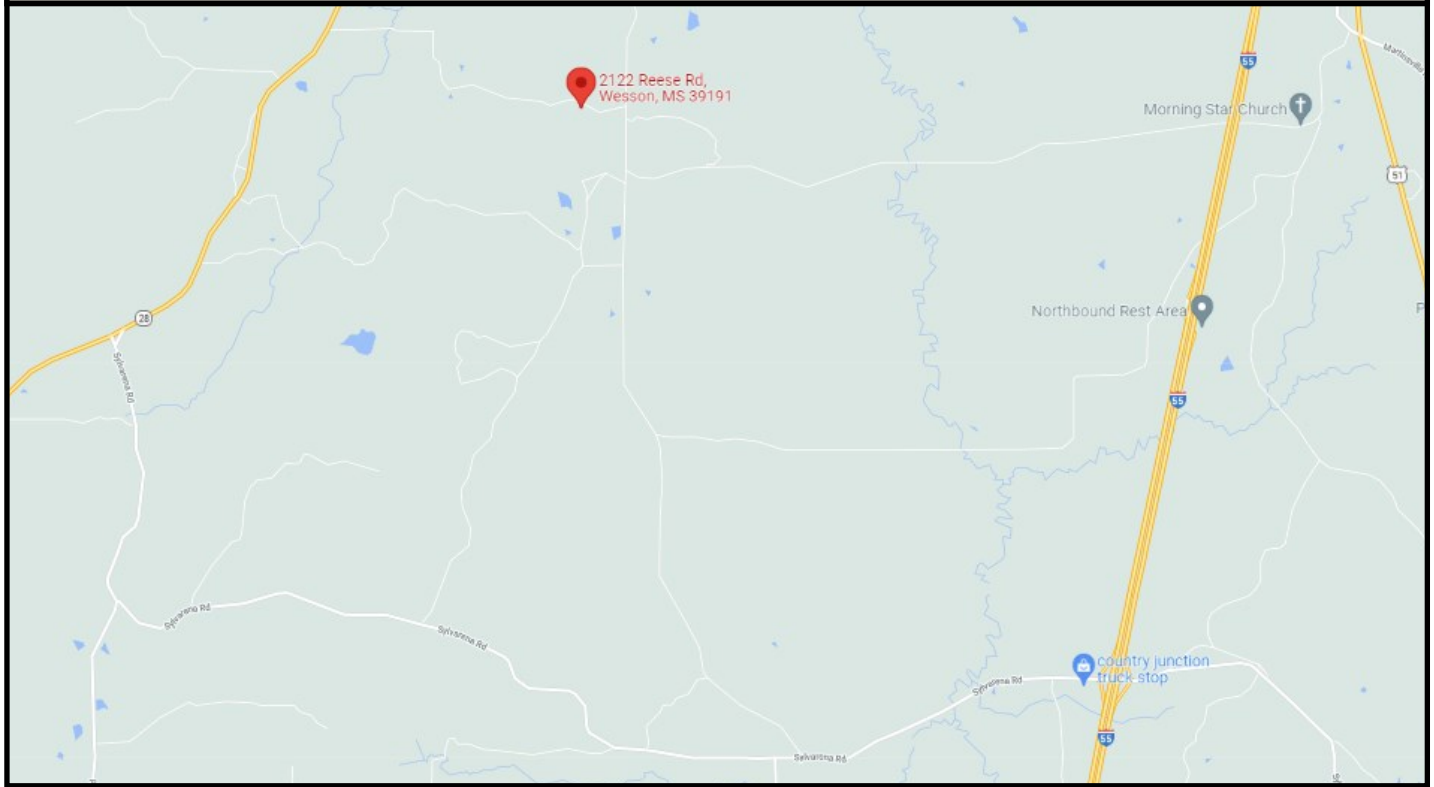
SABRINA WOLFF, REALTOR®
Sabrina@TomSmithHomes.com
601.990.5070 office | 601.754.3763 cell



TomSmithLandandHomes.com

Information is believed to be accurate but not guaranteed.

Directional Map



2122 Reese Road Wesson, MS 39191

Directions from I-55 N in Brookhaven, MS: Take Exit 51 and stay left onto Sylvarena Road. In 2.1 miles turn right onto Brown's Wells Road and travel 4.7 miles turn left onto Reese Road. The property is on your left in 0.3 miles. Address: 2122 Reese Road Wesson, MS 39191



Call me today!

SABRINA WOLFF, REALTOR®
Sabrina@TomSmithHomes.com
601.990.5070 office | 601.754.3763 cell



Expect More. Get More.

TomSmithLandandHomes.com

Information is believed to be accurate but not guaranteed.