

20± Acres of Great Hunting in Amite County, Mississippi



Great small acreage tract in Amite County, Mississippi! Excellent deer hunting among the eight year old re-growth of pine and hardwood timber. An established road system makes the 20± acres easily traversable. The property is conveniently located near McComb, MS, and its amenities. The property also has quick access to I-55, putting it less than an hour and a half to Baton Rouge, Louisiana, and less than two hours from New Orleans, Louisiana. Access to the property is through deeded easement with a gate. Call Preston Smith today to set up a showing!

Directions from McComb, MS: Starting at the intersection of US-55 and MS-24, travel west on MS-24W, in 7.4 miles turn left onto S Glading Rd, travel .4 miles continue onto Middle Glading Rd, travel 2.3 miles turn left onto Dickey Mills Rd/Fire Tower Rd, in 1.1 miles turn right onto Smiley Honea Rd, the easement for the property will be on the left in 108 feet.



call me today!

PRESTON SMITH, MANAGING BROKER
Preston@TomSmithLand.com
601.990.5070 office | 601.209.7150 cell



TomSmithLandandHomes.com

Information is believed to be accurate but not guaranteed.



Call me today!

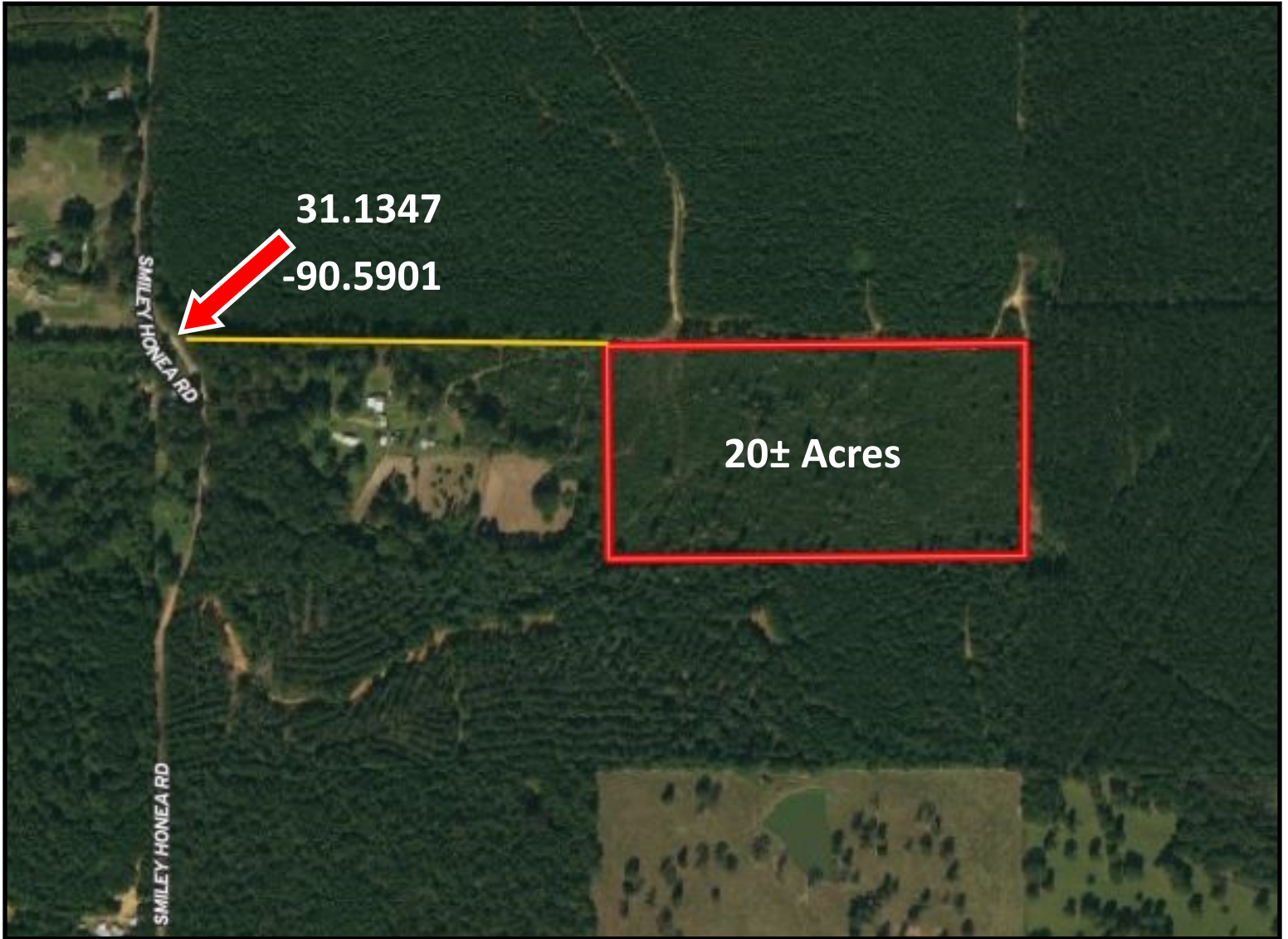
PRESTON SMITH, MANAGING BROKER
Preston@TomSmithLand.com
601.990.5070 office | 601.209.7150 cell



TomSmithLandandHomes.com

Information is believed to be accurate but not guaranteed.

Aerial Map



Call me today!

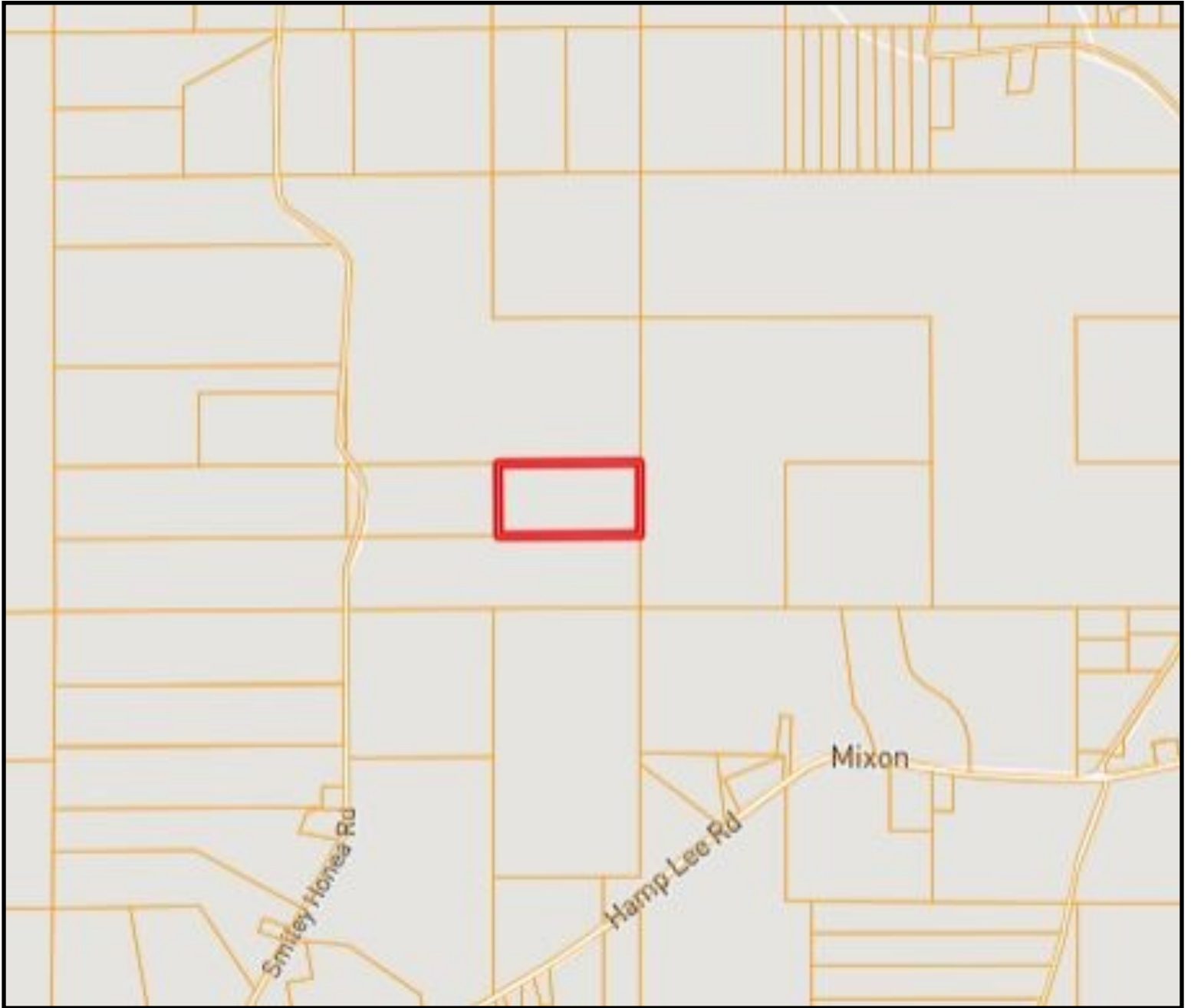
PRESTON SMITH, MANAGING BROKER
Preston@TomSmithLand.com
601.990.5070 office | 601.209.7150 cell



TomSmithLandandHomes.com

Information is believed to be accurate but not guaranteed.

Ownership Map



Call me today!

PRESTON SMITH, MANAGING BROKER
Preston@TomSmithLand.com
601.990.5070 office | 601.209.7150 cell



TomSmithLandandHomes.com

Information is believed to be accurate but not guaranteed.

Soil Map



| CODE | DESCRIPTION | ACRES | % | CPI | NCCPI | CAP |
|------|--|-------|--------|-----|-------|-----|
| OrC | Ora loam, 5 to 8 percent slopes | 12.09 | 61.72% | - | 41 | 3e |
| OrB | Ora loam, 2 to 5 percent slopes | 5.81 | 29.66% | - | 41 | 2e |
| Ar | Ariel silt loam, 0 to 2 percent slopes, occasionally flooded | 0.98 | 5% | - | 53 | 2w |
| PrB | Providence silt loam, 2 to 5 percent slopes | 0.72 | 3.68% | - | 49 | 2e |



Call me today!

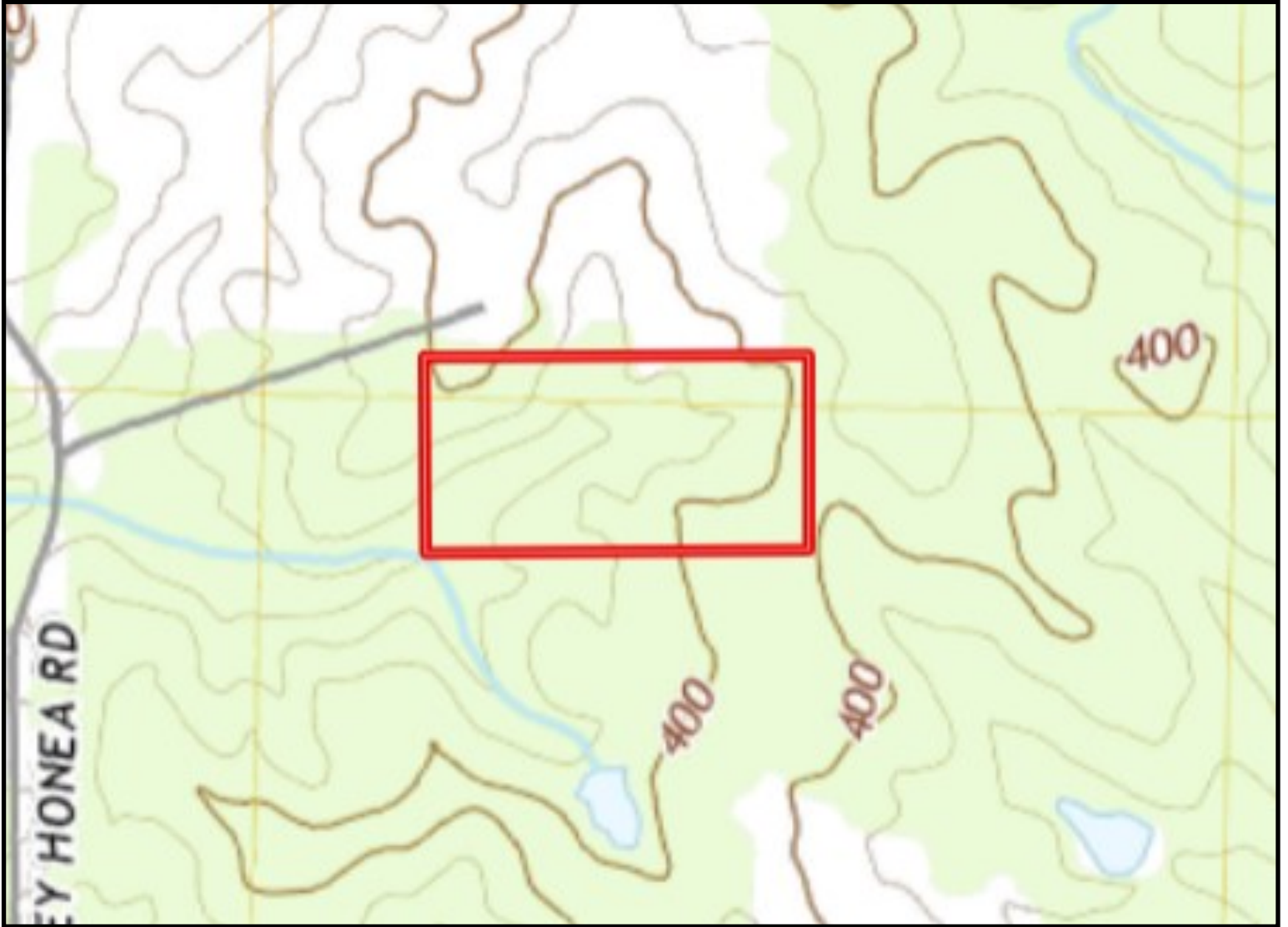
PRESTON SMITH, MANAGING BROKER
 Preston@TomSmithLand.com
 601.990.5070 office | 601.209.7150 cell



TomSmithLandandHomes.com

Information is believed to be accurate but not guaranteed.

Topography Map



Call me today!

PRESTON SMITH, MANAGING BROKER
Preston@TomSmithLand.com
601.990.5070 office | 601.209.7150 cell



TomSmithLandandHomes.com

Information is believed to be accurate but not guaranteed.

Directional Map



Directions from McComb, MS: Starting at the intersection of US-55 and MS-24, travel west on MS-24W, in 7.4 miles turn left onto S Glading Rd, travel .4 miles continue onto Middle Glading Rd, travel 2.3 miles turn left onto Dickey Mills Rd/Fire Tower Rd, in 1.1 miles turn right onto Smiley Honea Rd, the easement for the property will be on the left in 108 feet.



Call me today!

PRESTON SMITH, MANAGING BROKER
Preston@TomSmithLand.com
601.990.5070 office | 601.209.7150 cell



TomSmithLandandHomes.com

Information is believed to be accurate but not guaranteed.