

Rare Recreational Hunting Tract



121.24± Acres in Yazoo County, MS

\$398,000

Have you been searching for hunting land adjoining Panther Swamp in Yazoo County? Look no further! This Yazoo County, MS tract is a RARE FIND as land doesn't come available joining Panther Swamp very often. Consisting of 121.24± acres, the diversity of this tract is the perfect recipe for great whitetail, duck, and small game hunting. The timber makeup is mostly large, mature hardwoods with approximately 41± acres enrolled in CRP. A small section of the property would make an excellent duck hole with minimal work. Upon initial inspection, the number of deer tracts were abundant, and we even jumped a huge, big body, ten-point buck. This property comprises three non-contiguous tracts, with the area to the east being Panther Swamp and all other surrounding property being cropland. The location is ideal; less than 15 minutes from Yazoo City and less than 1 hour from Madison, making those after work hunts easy to slip away to. Call Chad today because this property will not last long!

DIRECTIONS FROM YAZOO CITY, MS: Travel Highway 16 West for 12.4 miles. Turn left on Woolfolk Road and take the immediate left on Woolfolk Deadening Road. The property is at the end of the road. [GOOGLE MAP LINK](#)



call me today!

CHAD WILSON, REALTOR®

Chad@TomSmithLand.com

601.898.2772 office | 601.750.1970 cell



TomSmithLandandHomes.com

Information is believed to be accurate but not guaranteed.



CHAD WILSON, REALTOR®
Chad@TomSmithLand.com
601.898.2772 office | 601.750.1970 cell



TomSmithLandandHomes.com

Information is believed to be accurate but not guaranteed.



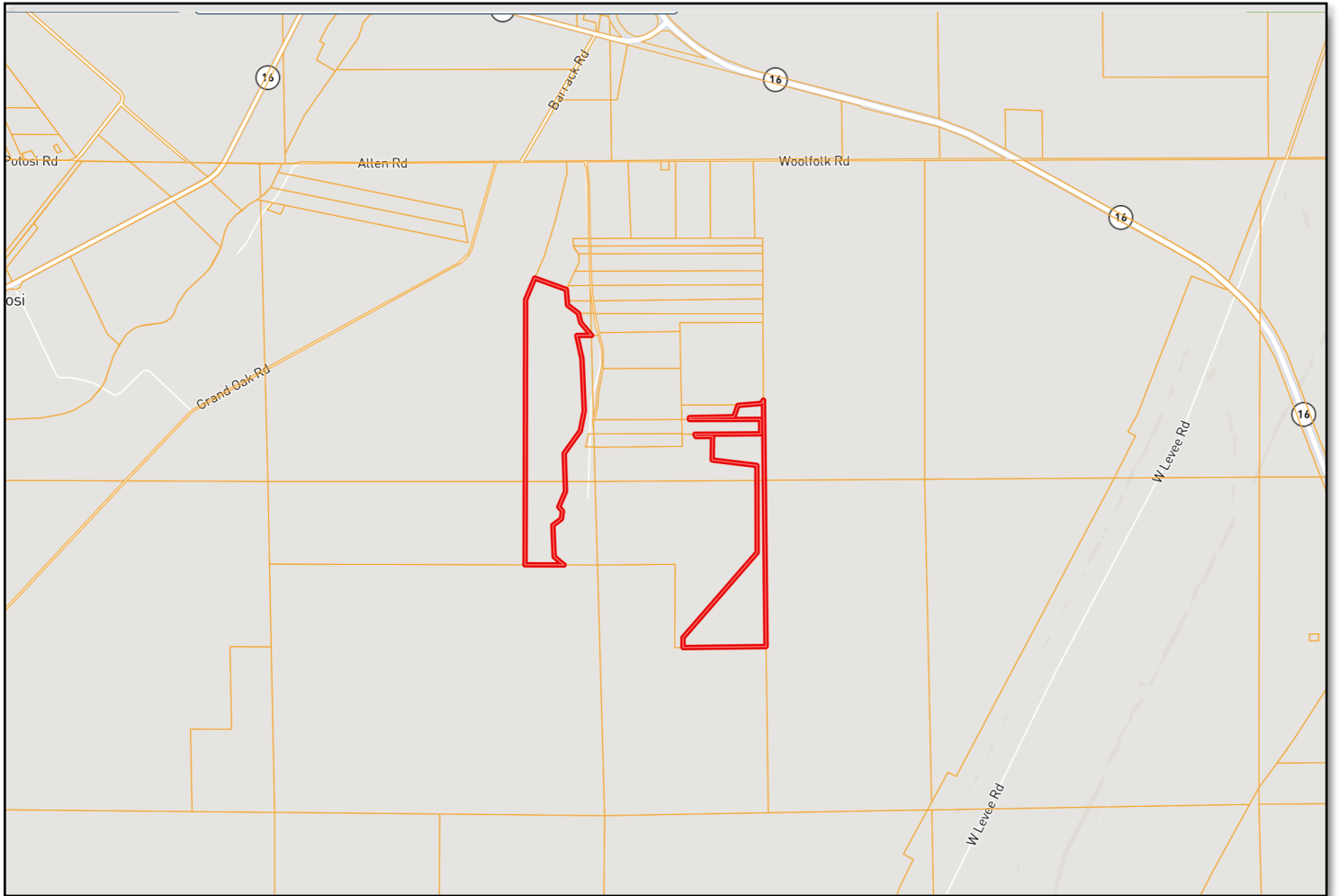
CHAD WILSON, REALTOR®
Chad@TomSmithLand.com
601.898.2772 office | 601.750.1970 cell



TomSmithLandandHomes.com

Information is believed to be accurate but not guaranteed.

OWNERSHIP MAP



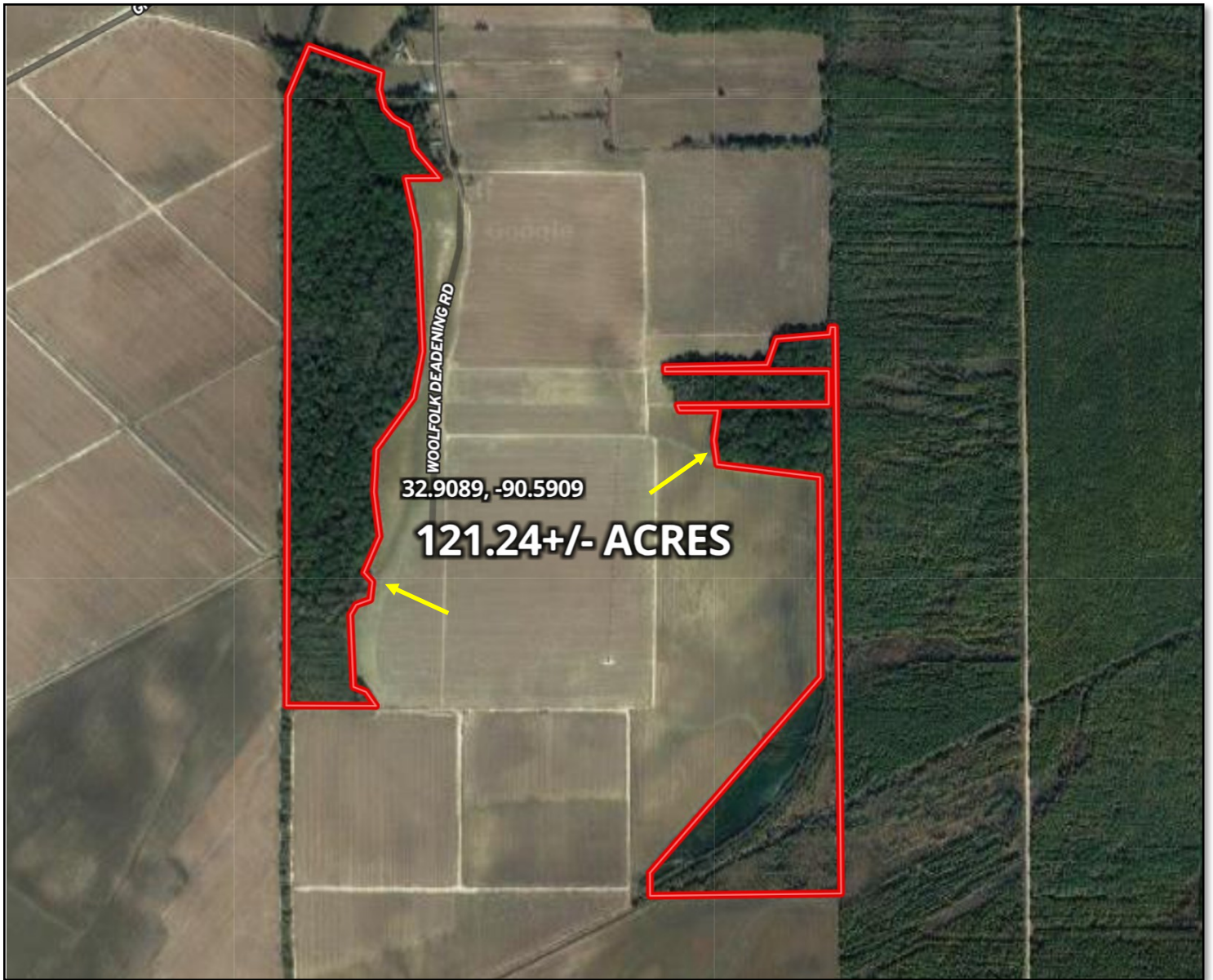
CHAD WILSON, REALTOR®
Chad@TomSmithLand.com
601.898.2772 office | 601.750.1970 cell



TomSmithLandandHomes.com

Information is believed to be accurate but not guaranteed.

AERIAL MAP



[CLICK HERE FOR AN INTERACTIVE MAP](#)



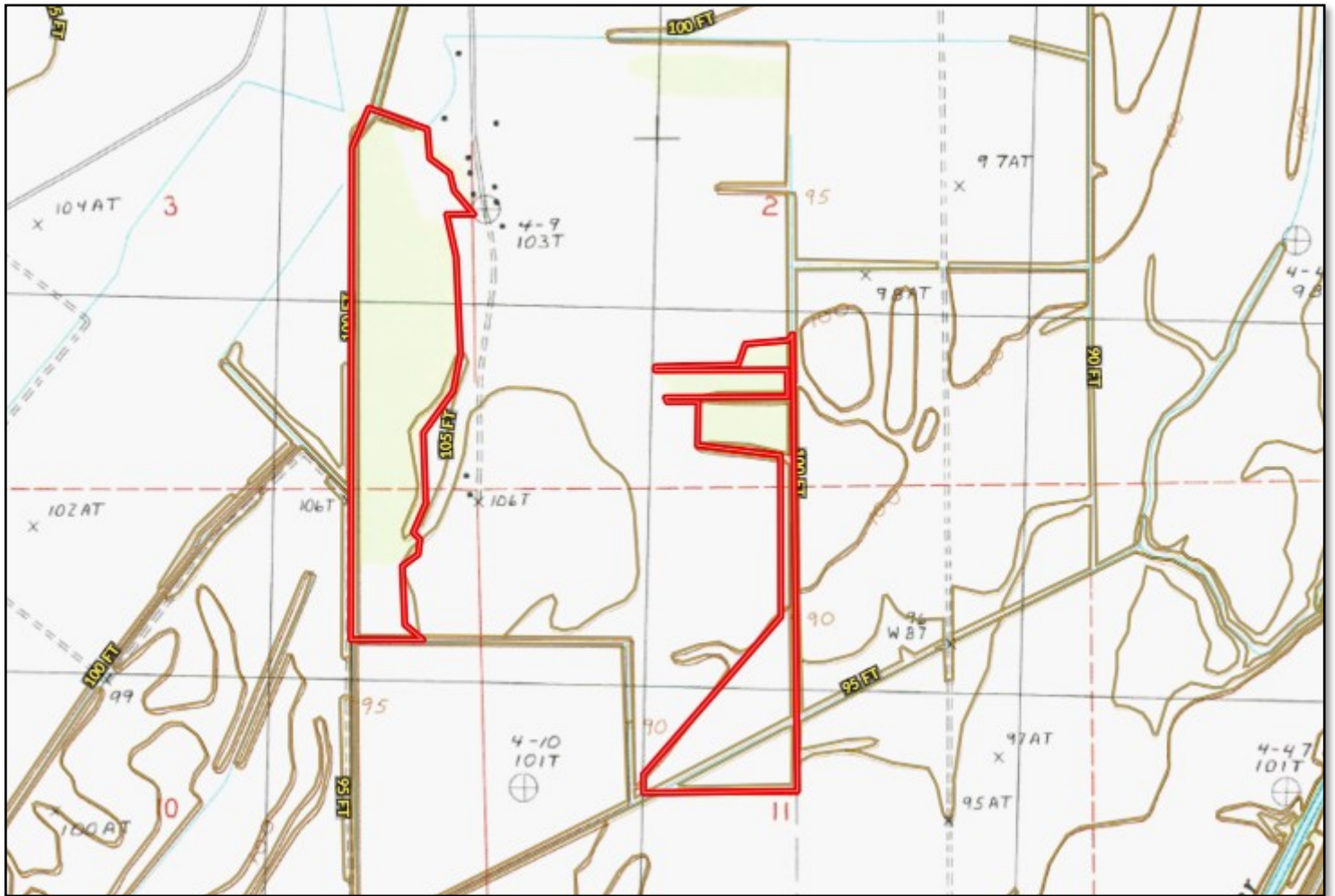
CHAD WILSON, REALTOR®
Chad@TomSmithLand.com
601.898.2772 office | 601.750.1970 cell



TomSmithLandandHomes.com

Information is believed to be accurate but not guaranteed.

TOPO MAP



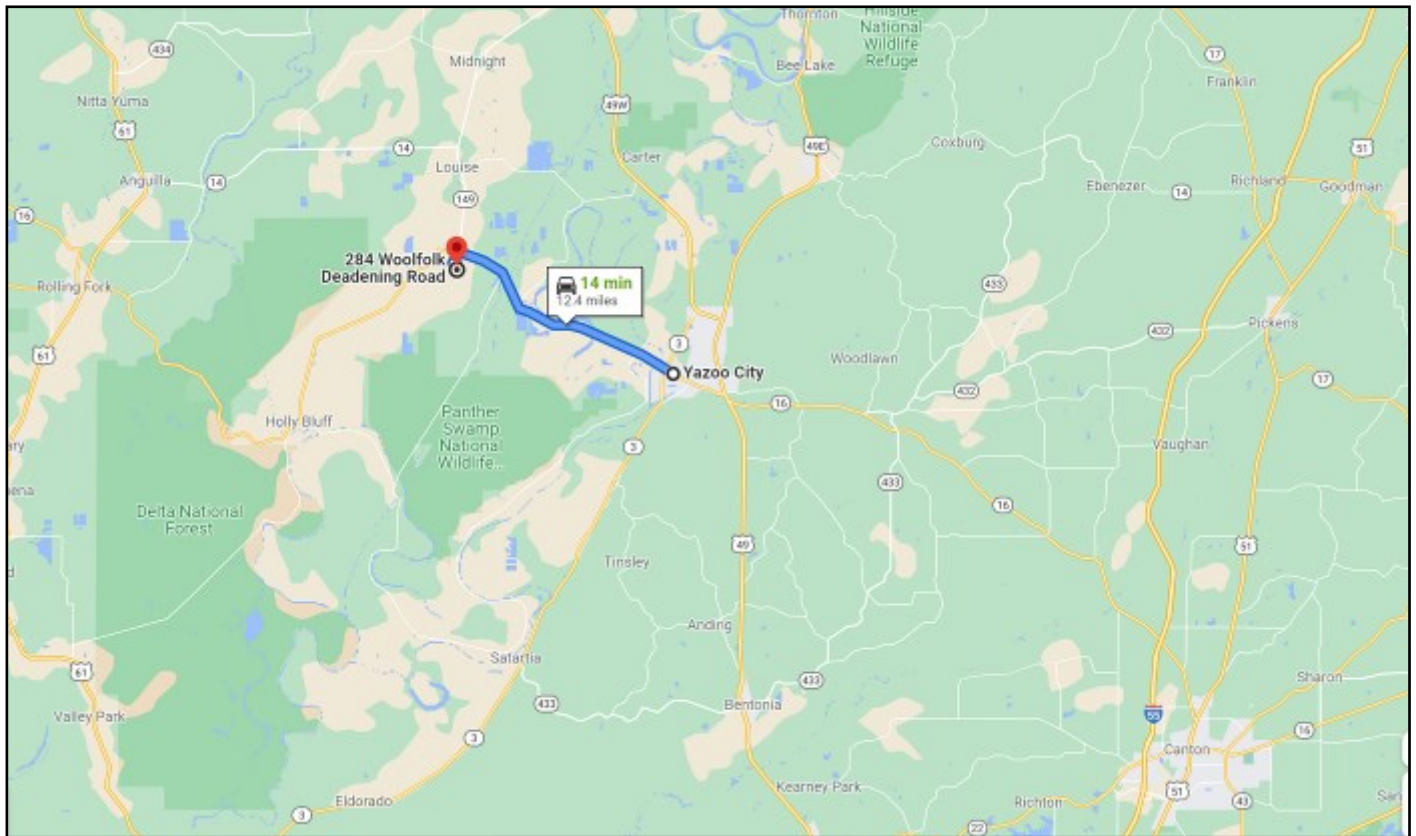
CHAD WILSON, REALTOR®
Chad@TomSmithLand.com
601.898.2772 office | 601.750.1970 cell



TomSmithLandandHomes.com

Information is believed to be accurate but not guaranteed.

DIRECTIONAL MAP



DIRECTIONS FROM YAZOO CITY, MS: Travel Highway 16 West for 12.4 miles. Turn left on Woolfolk Road and take the immediate left on Woolfolk Deadening Road. The property is at the end of the road. [GOOGLE MAP LINK](#)



call me today!

CHAD WILSON, REALTOR®

Chad@TomSmithLand.com

601.898.2772 office | 601.750.1970 cell



Expect More. Get More.

TomSmithLandandHomes.com

Information is believed to be accurate but not guaranteed.