

# 3 +/- Acre Hunting/Camp Retreat Adjacent to Tombigbee National Forest Choctaw County, MS



Look at this 3+/- acre campsite with three cabins, enclosed skinning shed, laundry shed, and camper hook-up, surrounded by beautiful old growth timber, and behind a locked gate! It is adjacent to Tombigbee National Forest and has access privileges. You can enjoy hunting in a large public hunting area with a private campsite and room for friends and family. There is a camper hook-up already on-site, and it is situated within minutes of Louisville or Ackerman amenities. The area around the camp is covered with beautiful hardwoods. Sit around the fire, read a book, take a hike or cook-out with hungry friends on your hidden retreat. Showings are by appointment only, call Michael to schedule yours today!



*Call me today!*

**MICHAEL HALFACRE**, MS REGISTERED FORESTER, ASSOC. BROKER

MHalfacre@TomSmithLand.com

662.268.6333 office | 662.242.4220 cell



**TomSmithLandandHomes.com**

Information is believed to be accurate but not guaranteed.



# Three Private Camp-houses Bring Friends!



Camphouse



UTV Shed and Laundry Shed



Camphouses



skinning/processing building



1 room building



3<sup>rd</sup> Camphouse



**MICHAEL HALFACRE**, MS REGISTERED FORESTER, ASSOC. BROKER

MHalfacre@TomSmithLand.com

662.268.6333 office | 662.242.4220 cell

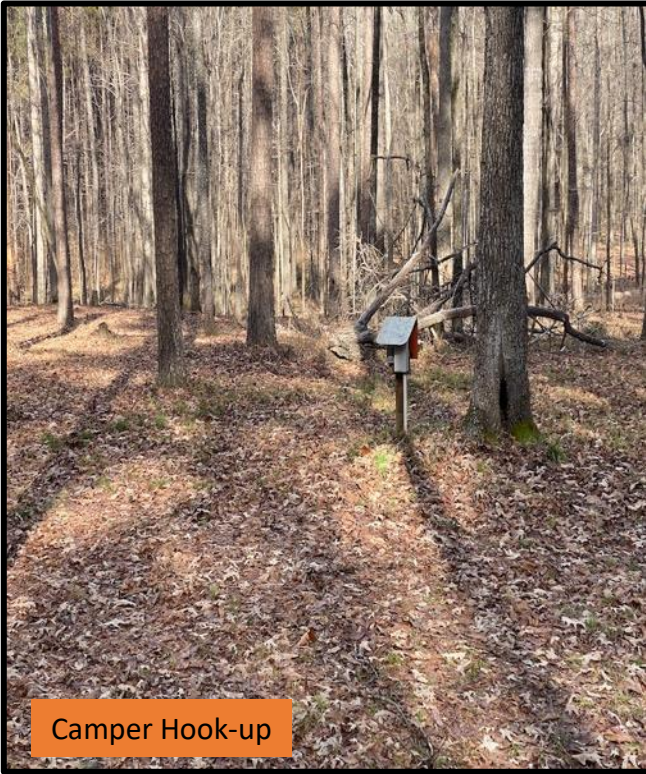


Expect More. Get More.

## TomSmithLandandHomes.com

Information is believed to be accurate but not guaranteed.





- Solitude
- Natural Beauty
- Access To National Forest and Wildlife Management Area
- Hunting
- Fishing (Choctaw Lake)
- Privacy
- Multiple Use Year Round
- Close To Amenities
- Room For Friends



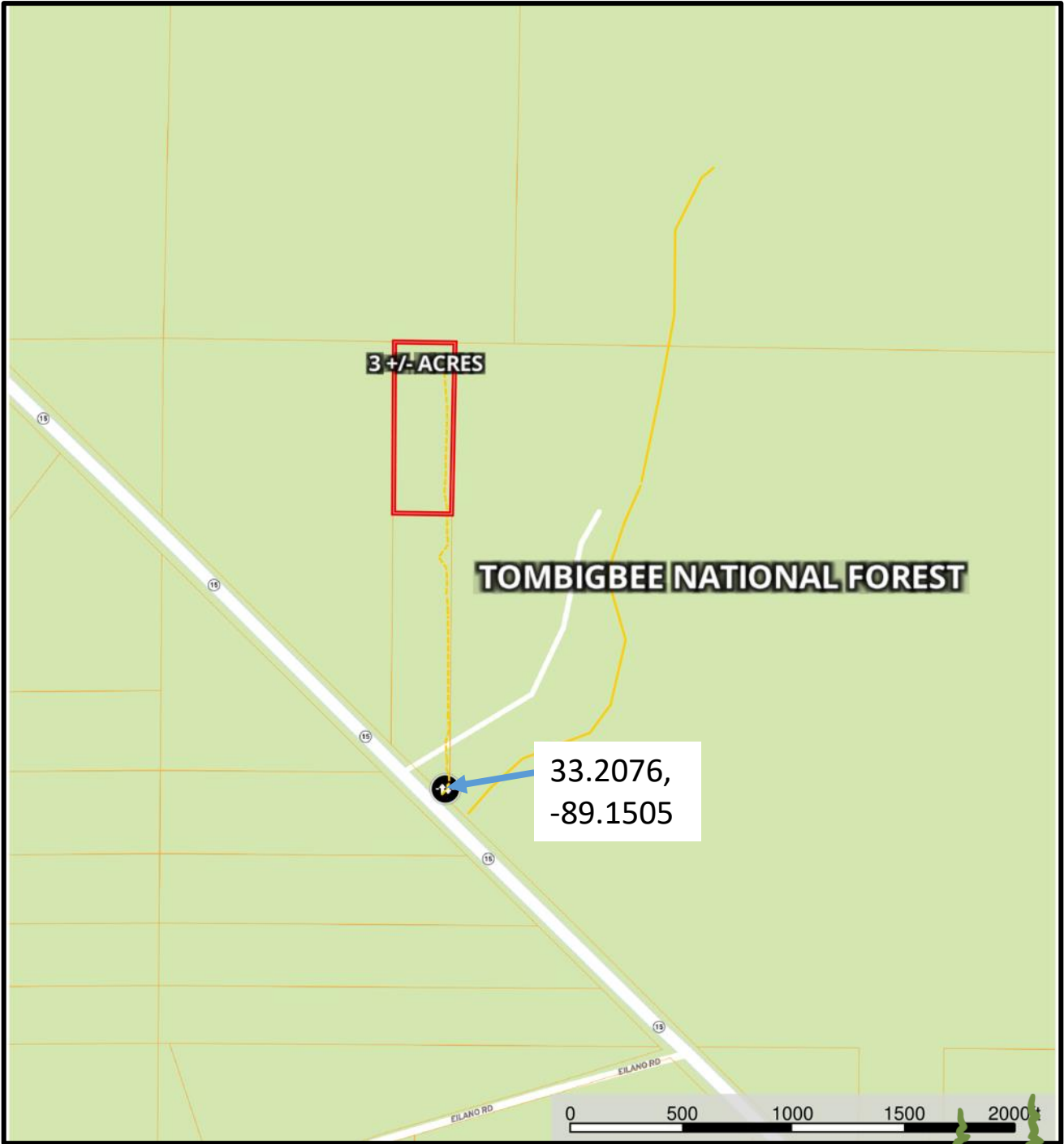
**MICHAEL HALFACRE**, MS REGISTERED FORESTER, ASSOC. BROKER  
MHalfacre@TomSmithLand.com  
662.268.6333 office | 662.242.4220 cell



**TomSmithLandandHomes.com**

Information is believed to be accurate but not guaranteed.

# Ownership Map



**MICHAEL HALFACRE**, MS REGISTERED FORESTER, ASSOC. BROKER  
MHalfacre@TomSmithLand.com  
662.268.6333 office | 662.242.4220 cell

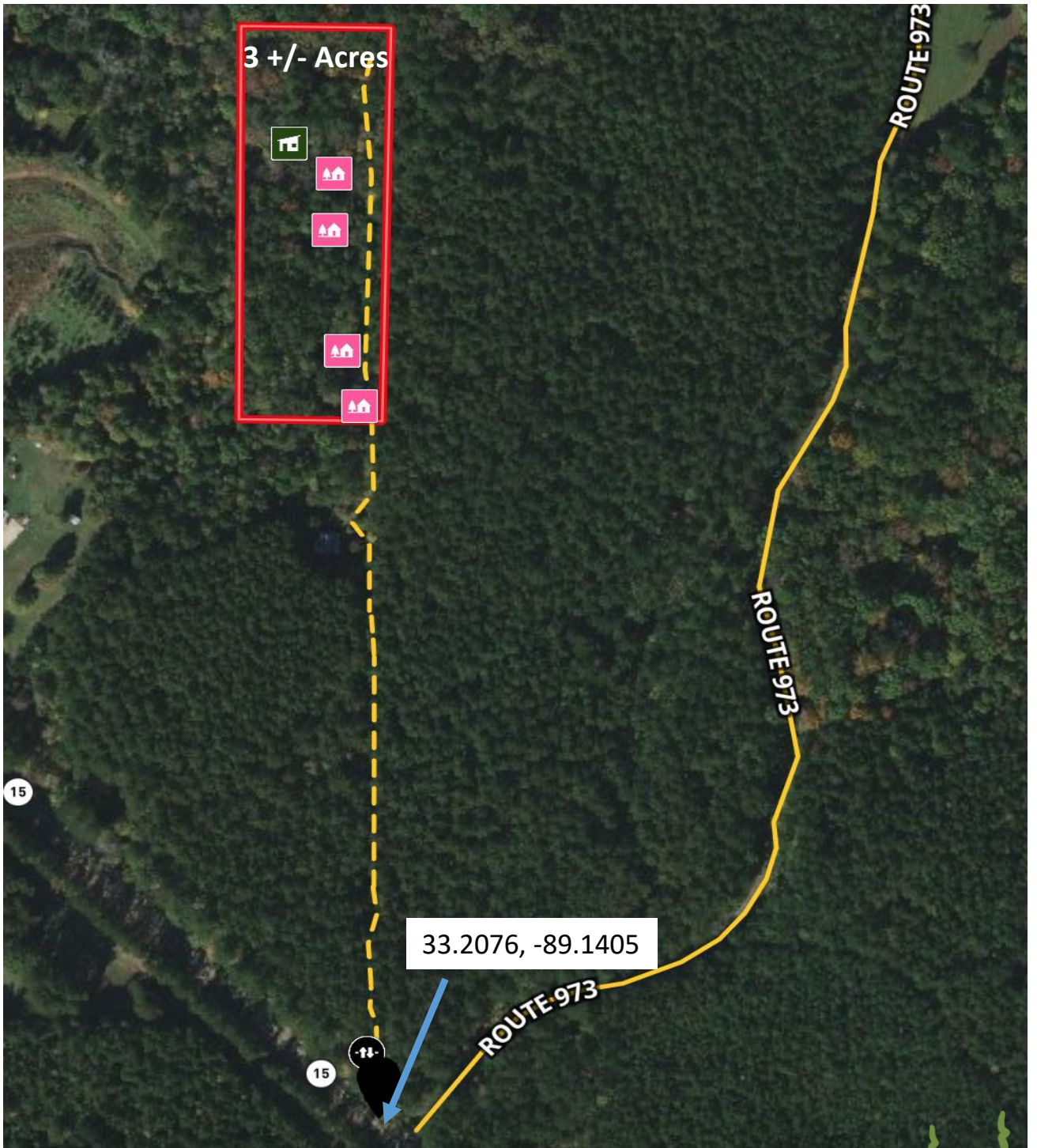


**TomSmithLandandHomes.com**

Information is believed to be accurate but not guaranteed.



# Aerial Photograph



**MICHAEL HALFACRE**, MS REGISTERED FORESTER, ASSOC. BROKER

MHalfacre@TomSmithLand.com

662.268.6333 office | 662.242.4220 cell

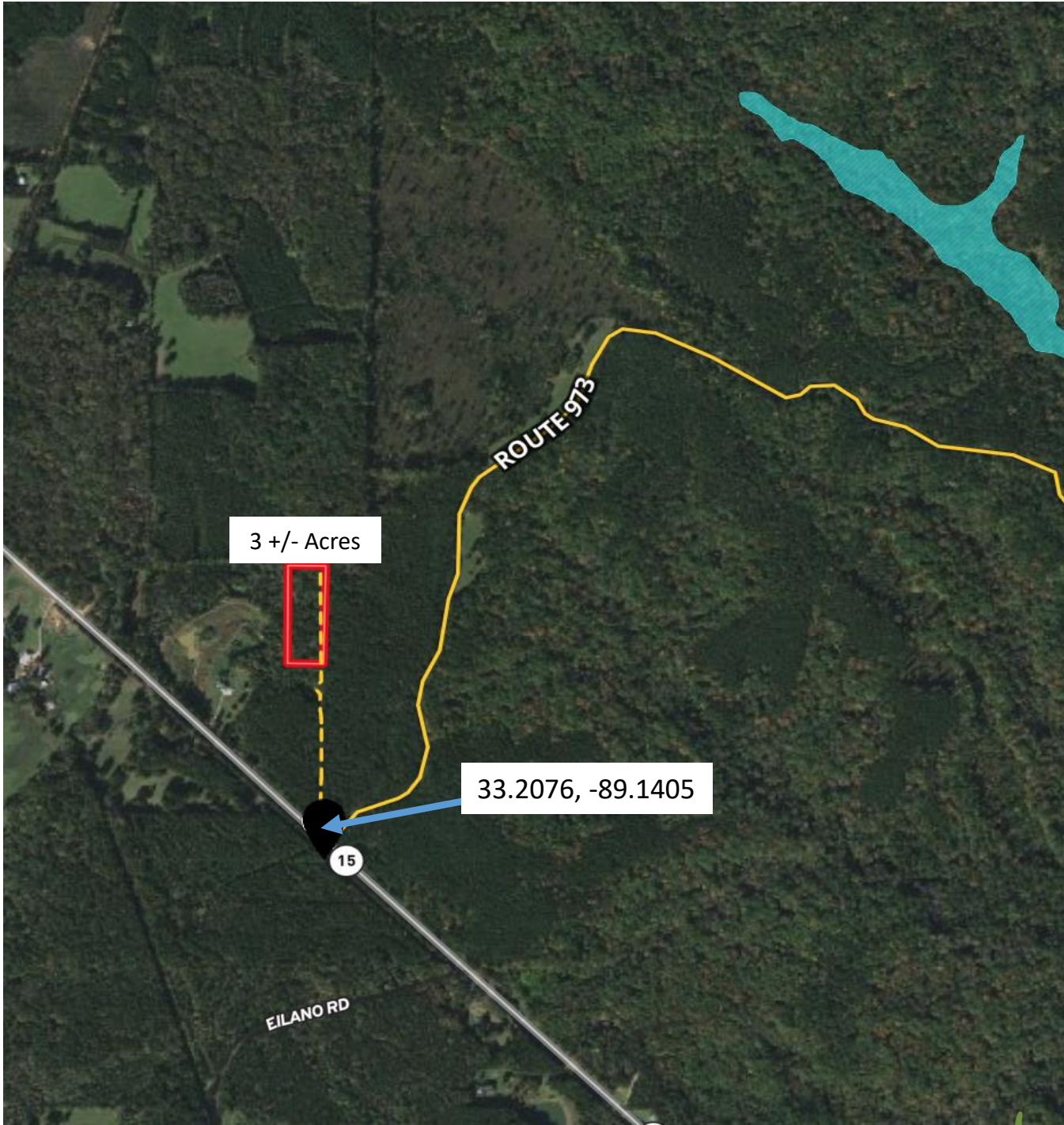


# TomSmithLandandHomes.com

Information is believed to be accurate but not guaranteed.



FEMA Flood Map



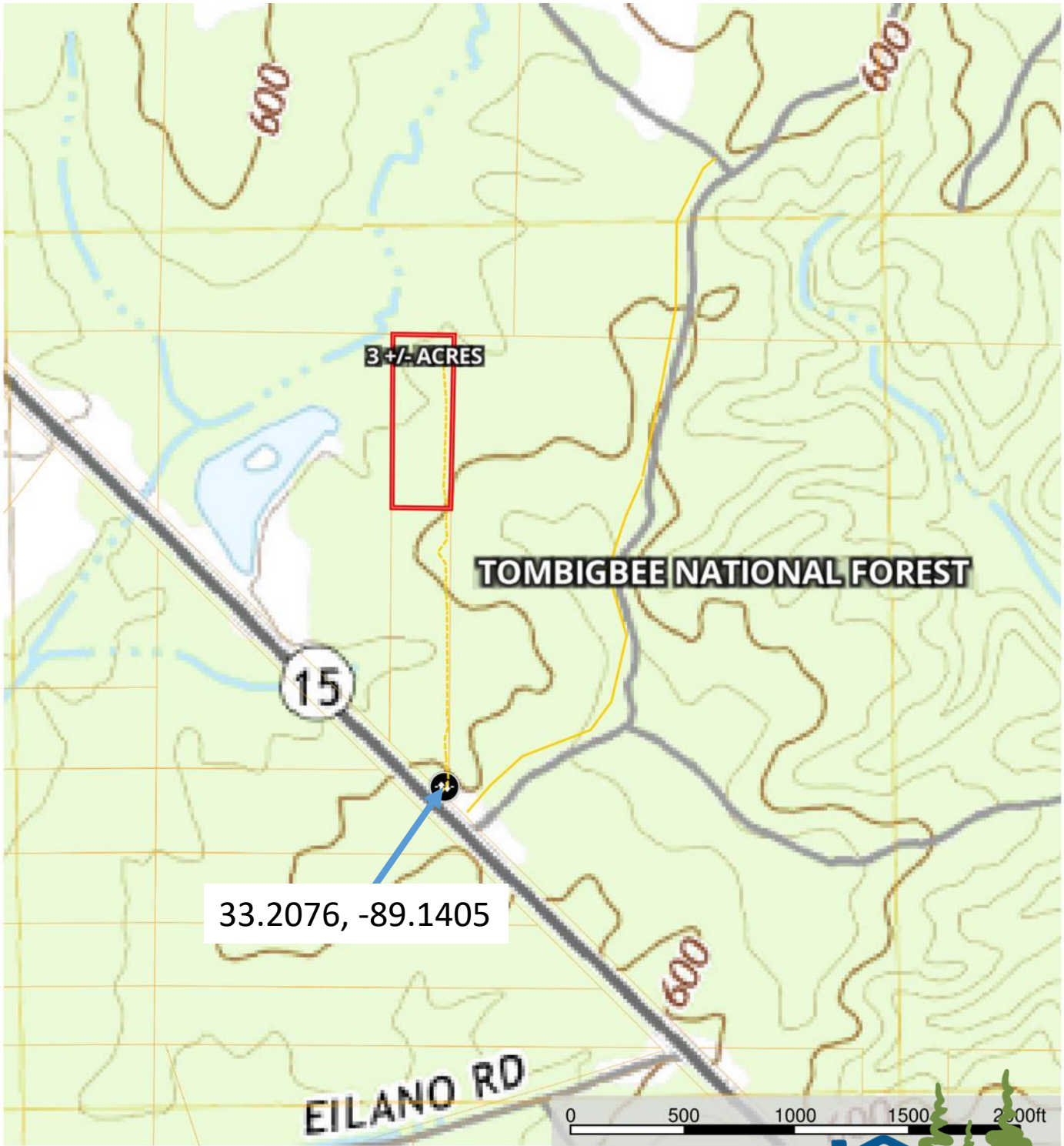
**MICHAEL HALFACRE**, MS REGISTERED FORESTER, ASSOC. BROKER  
 MHalfacre@TomSmithLand.com  
 662.268.6333 office | 662.242.4220 cell



**TomSmithLandandHomes.com**

Information is believed to be accurate but not guaranteed.

# Topographic Map



**MICHAEL HALFACRE**, MS REGISTERED FORESTER, ASSOC. BROKER

MHalfacre@TomSmithLand.com

662.268.6333 office | 662.242.4220 cell



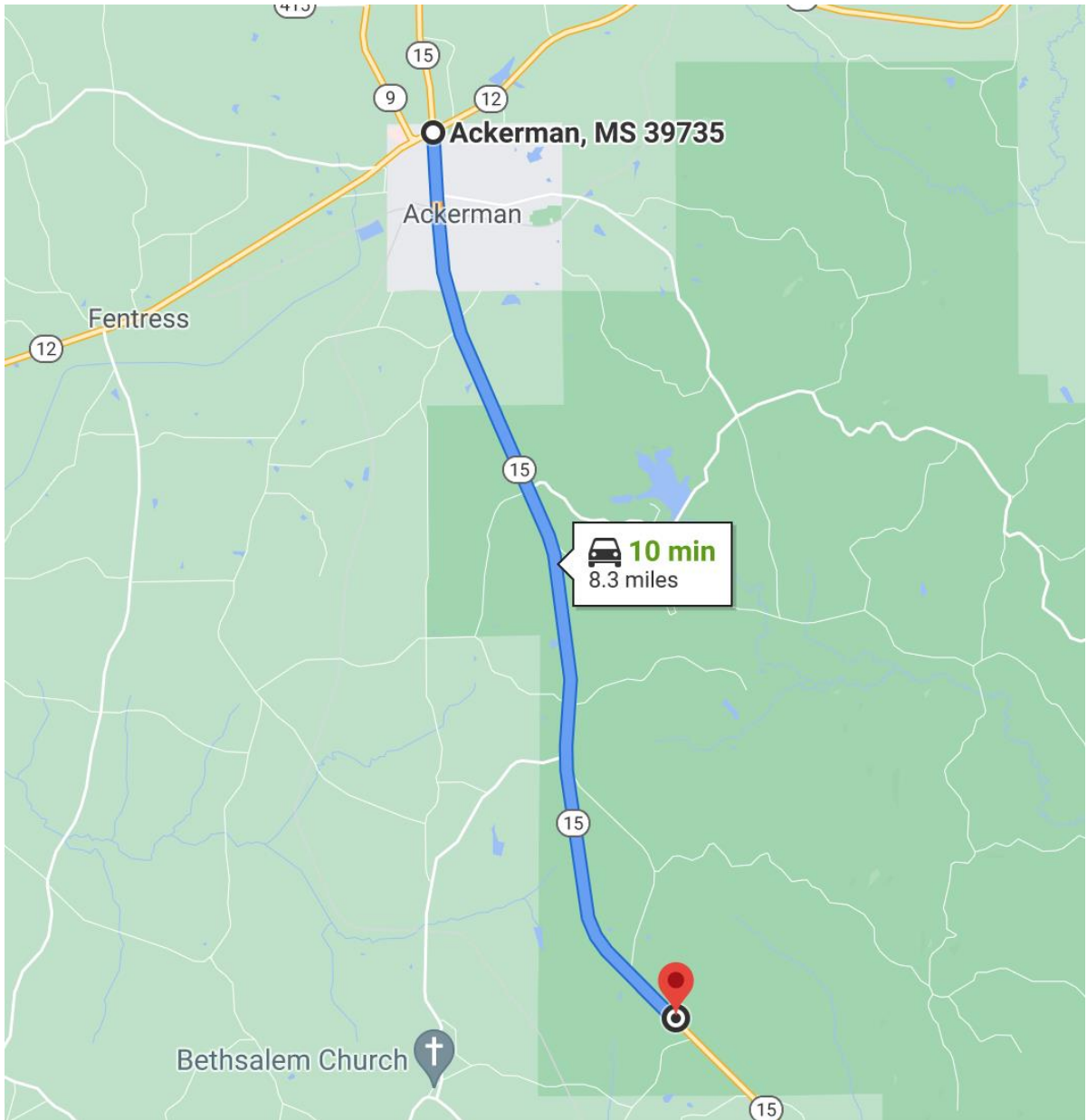
Expect More. Get More.

# TomSmithLandandHomes.com

Information is believed to be accurate but not guaranteed.



## Directional Map



**Directions from intersection of MS-12 & MS 15 in Ackerman, MS;** Travel south on Hwy 15 for 8.3 miles and entrance is on the left (locked gate). Showings by appointment only; call Michael to set up yours today!



*Call me today!*

**MICHAEL HALFACRE**, MS REGISTERED FORESTER, ASSOC. BROKER

MHalfacre@TomSmithLand.com

662.268.6333 office | 662.242.4220 cell



**TomSmithLandandHomes.com**

Information is believed to be accurate but not guaranteed.