

Oak Grove

22.1± ACRES IN HINDS COUNTY, MS



\$409,000



Looking to live in a country setting but minutes away from the city? You have found it! Welcome to Oak Grove. This Hinds County, MS homeplace is sitting on 22.1± acres of large oaks and planted pines. Wildlife is abundant with deer and turkeys. The home offers 6 bedrooms, 2 1/2 baths, with enormous storage throughout. There's a back-up generator that will power the entire home. A three bay workshop with a cooler for wildlife and a barn is also located on the property. During the spring, the property blooms up with hundreds of flowers from planted bulbs and azaleas lining the drive way. There's a raised bed garden and also many fruit trees on the property. Many bonuses come with the house. It's a must see. Call Chad today!



call me today!

CHAD WILSON, REALTOR®

Chad@TomSmithLand.com

601.898.2772 office | 601.750.1970 cell



TomSmithLandandHomes.com

Information is believed to be accurate but not guaranteed.



CHAD WILSON, REALTOR®
 Chad@TomSmithLand.com
 601.898.2772 office | 601.750.1970 cell



TomSmithLandandHomes.com

Information is believed to be accurate but not guaranteed.

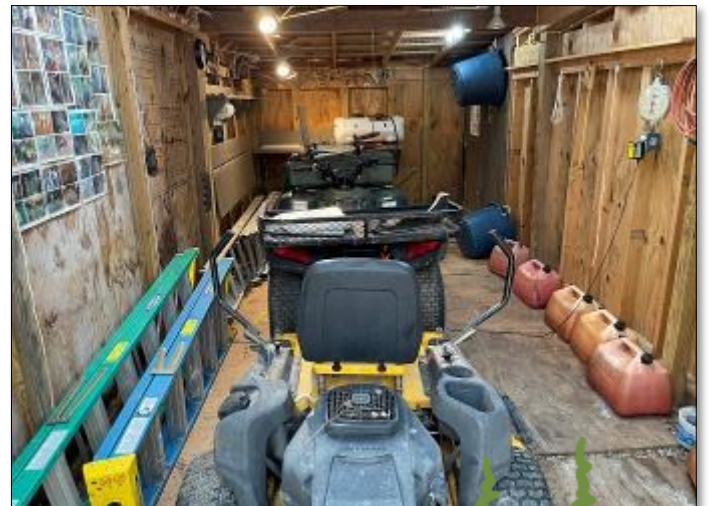


CHAD WILSON, REALTOR®
 Chad@TomSmithLand.com
 601.898.2772 office | 601.750.1970 cell



TomSmithLandandHomes.com

Information is believed to be accurate but not guaranteed.



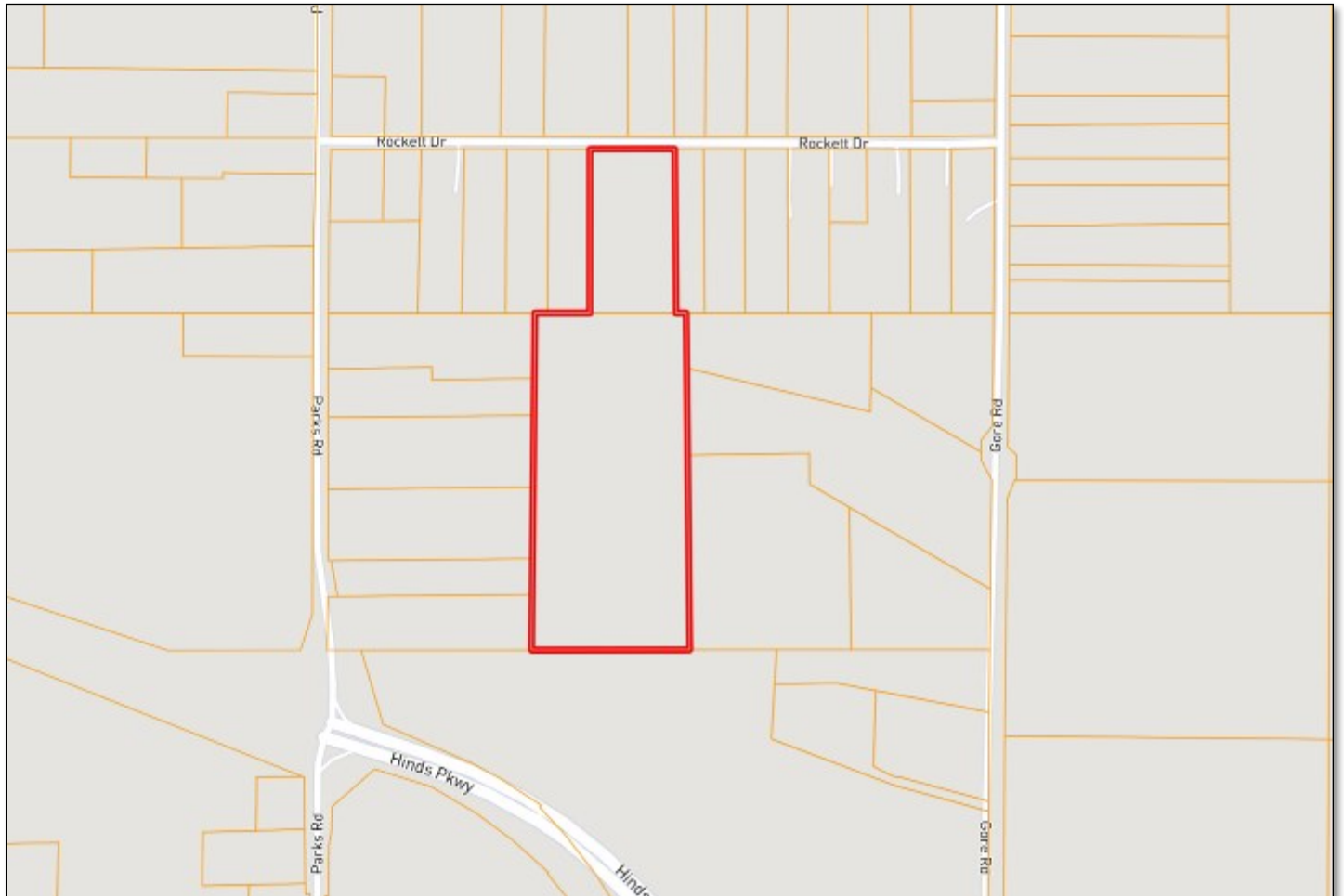
CHAD WILSON, REALTOR®
 Chad@TomSmithLand.com
 601.898.2772 office | 601.750.1970 cell



TomSmithLandandHomes.com

Information is believed to be accurate but not guaranteed.

Ownership Map



CHAD WILSON, REALTOR®
Chad@TomSmithLand.com
601.898.2772 office | 601.750.1970 cell



TomSmithLandandHomes.com

Information is believed to be accurate but not guaranteed.

Aerial Map



Click [HERE](#) for an Interactive Map



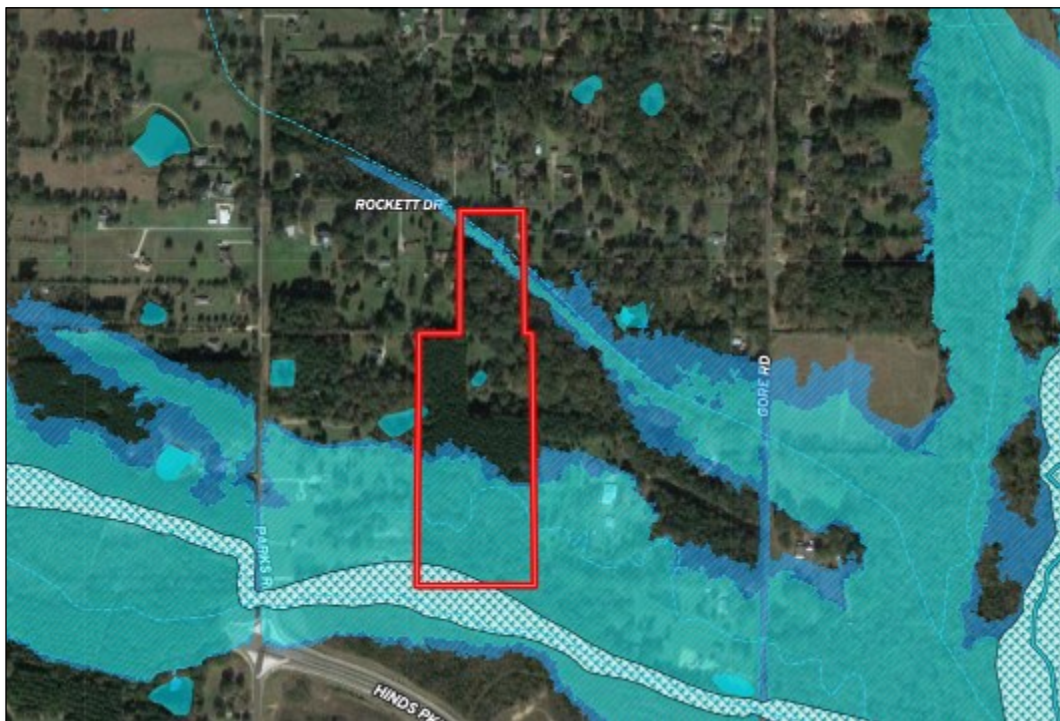
CHAD WILSON, REALTOR®
Chad@TomSmithLand.com
601.898.2772 office | 601.750.1970 cell



TomSmithLandandHomes.com

Information is believed to be accurate but not guaranteed.

Topo Map



FEMA Floodplain Map



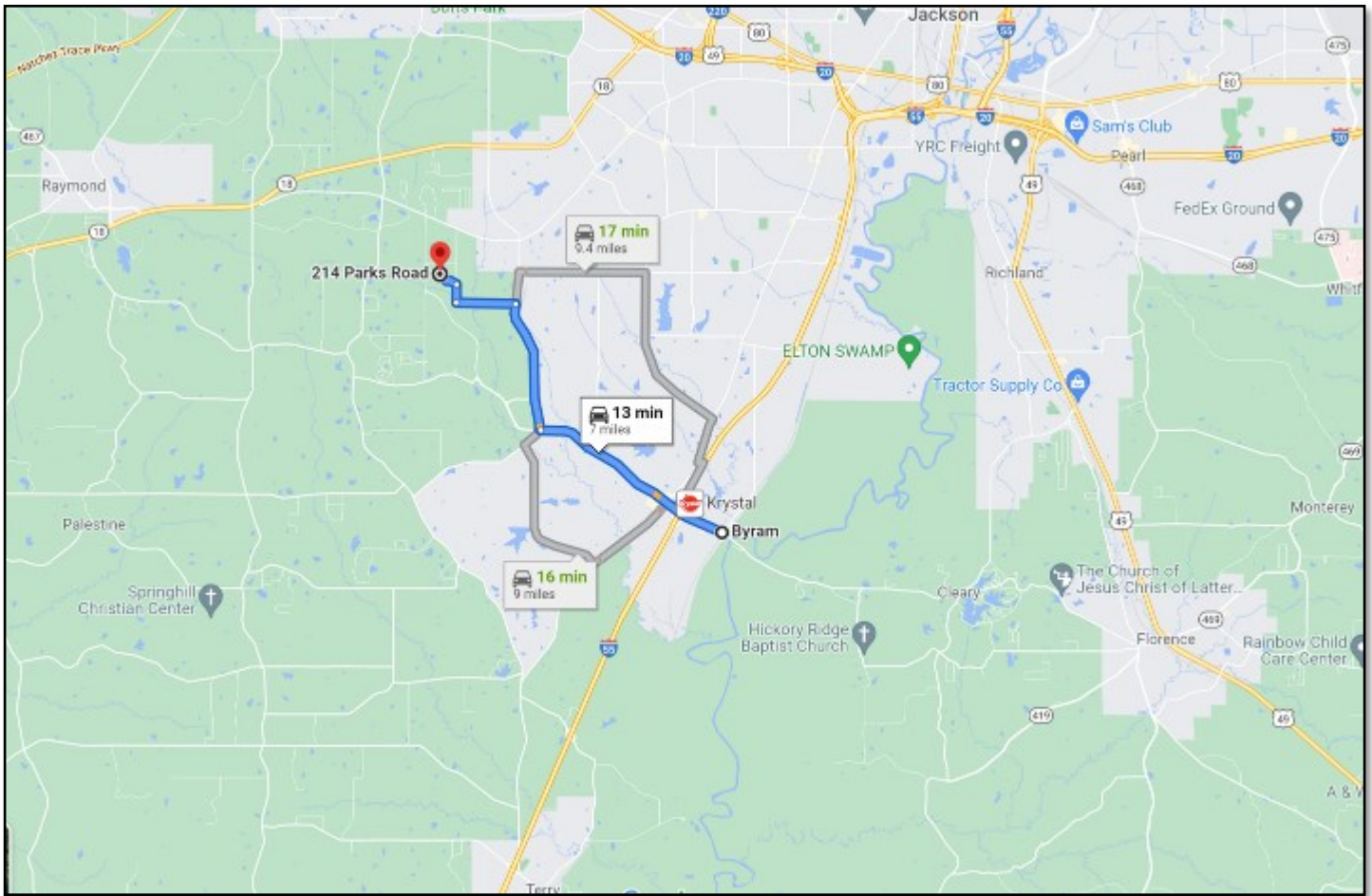
CHAD WILSON, REALTOR®
Chad@TomSmithLand.com
601.898.2772 office | 601.750.1970 cell



TomSmithLandandHomes.com

Information is believed to be accurate but not guaranteed.

Directional Map



DIRECTIONS FROM I-55 AND SIWELL ROAD IN BYRAM, MS: Travel on Siwell Road/Hinds Parkway until it dead ends into Parks Rd. Take a right on Parks Rd., after approximately 1/4 mile the drive way is on the right. [GOOGLE MAP LINK](#)



call me today!

CHAD WILSON, REALTOR®

Chad@TomSmithLand.com

601.898.2772 office | 601.750.1970 cell



TomSmithLandandHomes.com

Information is believed to be accurate but not guaranteed.