

36± ACRES OF EXCELLENT HUNTING IN WALTHALL COUNTY, MS



Check out this 36± acres of great hunting land in Walthall County, MS. The property is located approximately 30 minutes from McComb, MS, and only 20 minutes from Tylertown, MS, and all its amenities. Carter's Creek runs on the north side of the property, providing plenty of water for wildlife. Large hardwoods and pine regrowth run throughout the property, and secluded down W Burnett Rd. with an established road system running throughout the property. There are plenty of areas for food plots and areas for deer stands. Call Trinity Webb for a showing today!

Directions from Tylertown, MS: Travel north on MS-583N for 12.4 miles, turn left onto W Burnette Rd, travel .8 miles and the property will be on the right.



call me today!

TRINITY WEBB, REALTOR®

Trinity@TomSmithHomes.com

601.990.5070 office | 769.218.7860 cell



TomSmithLandandHomes.com

Information is believed to be accurate but not guaranteed.



2010-2021
AMERICA'S
BEST
BROKERAGES

call me today!

TRINITY WEBB, REALTOR®
Trinity@TomSmithHomes.com
601.990.5070 office | 769.218.7860 cell



TomSmithLandandHomes.com

Information is believed to be accurate but not guaranteed.



2010-2021
AMERICA'S
BEST
BROKERAGES

call me today!

TRINITYWEBB, REALTOR®

Trinity@TomSmithHomes.com

601.990.5070 office | 769.218.7860 cell



Expect More. Get More.

TomSmithLandandHomes.com

Information is believed to be accurate but not guaranteed.



2010-2021
AMERICA'S
BEST
BROKERAGES

call me today!

TRINITYWEBB, REALTOR®

Trinity@TomSmithHomes.com

601.990.5070 office | 769.218.7860 cell



Expect More. Get More.

TomSmithLandandHomes.com

Information is believed to be accurate but not guaranteed.



2010-2021
AMERICA'S
BEST
BROKERAGES

call me today!

TRINITYWEBB, REALTOR®

Trinity@TomSmithHomes.com

601.990.5070 office | 769.218.7860 cell

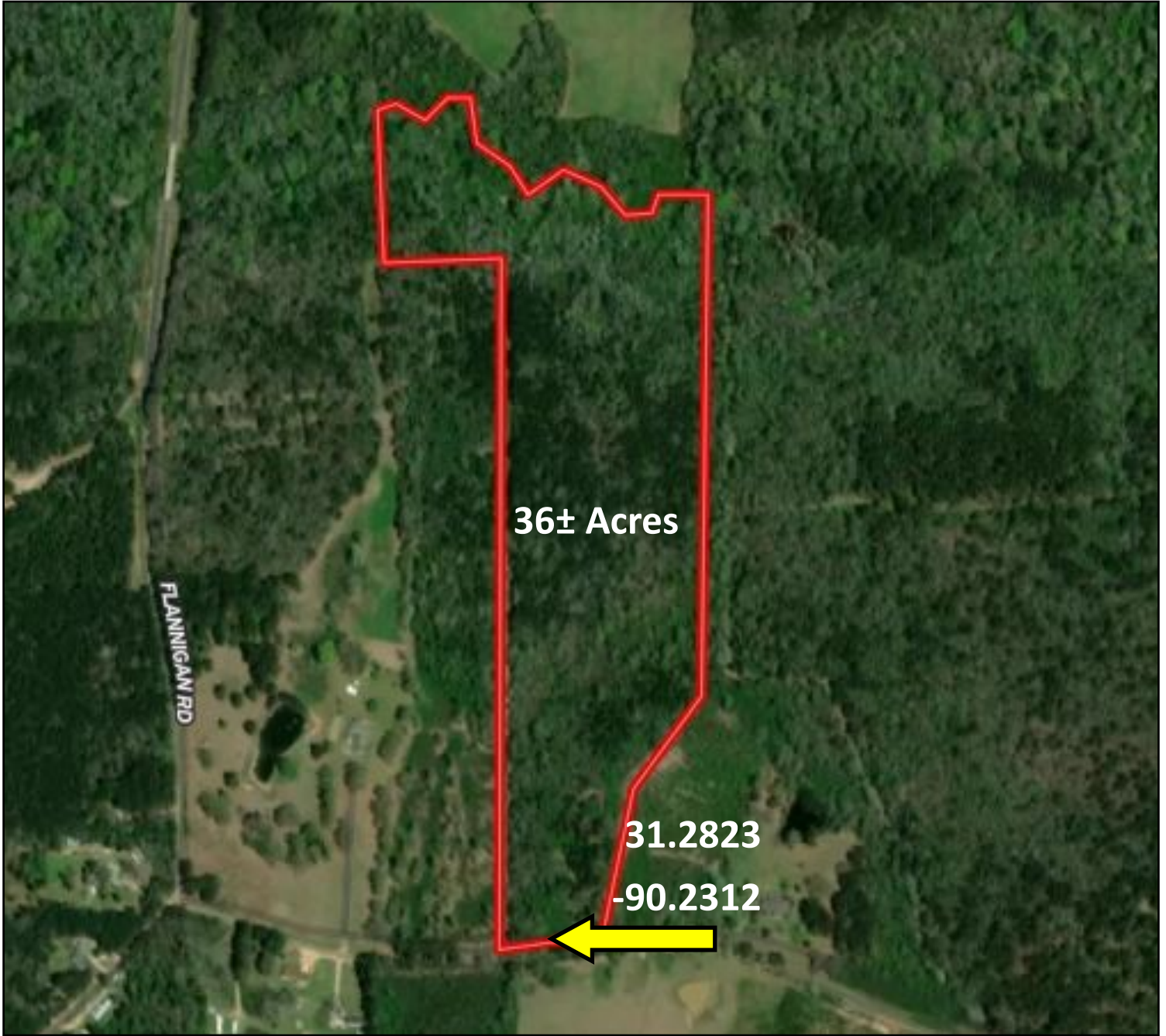


Expect More. Get More.

TomSmithLandandHomes.com

Information is believed to be accurate but not guaranteed.

AERIAL MAP



call me today!

2010-2021
AMERICA'S
BEST
BROKERAGES

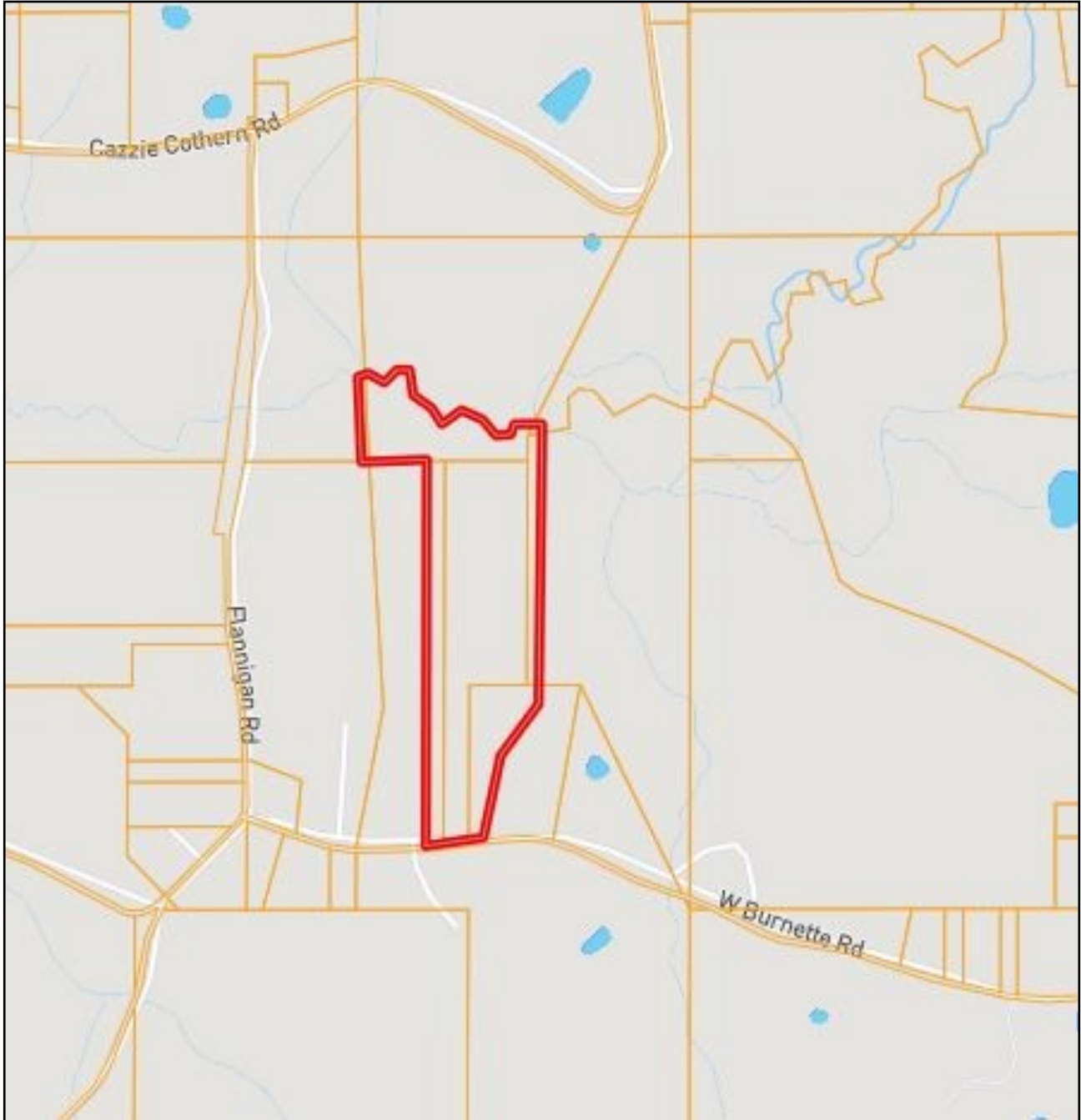
TRINITY WEBB, REALTOR®
Trinity@TomSmithHomes.com
601.990.5070 office | 769.218.7860 cell



TomSmithLandandHomes.com

Information is believed to be accurate but not guaranteed.

OWNERSHIP MAP



call me today!

2010-2021
AMERICA'S
BEST
BROKERAGES

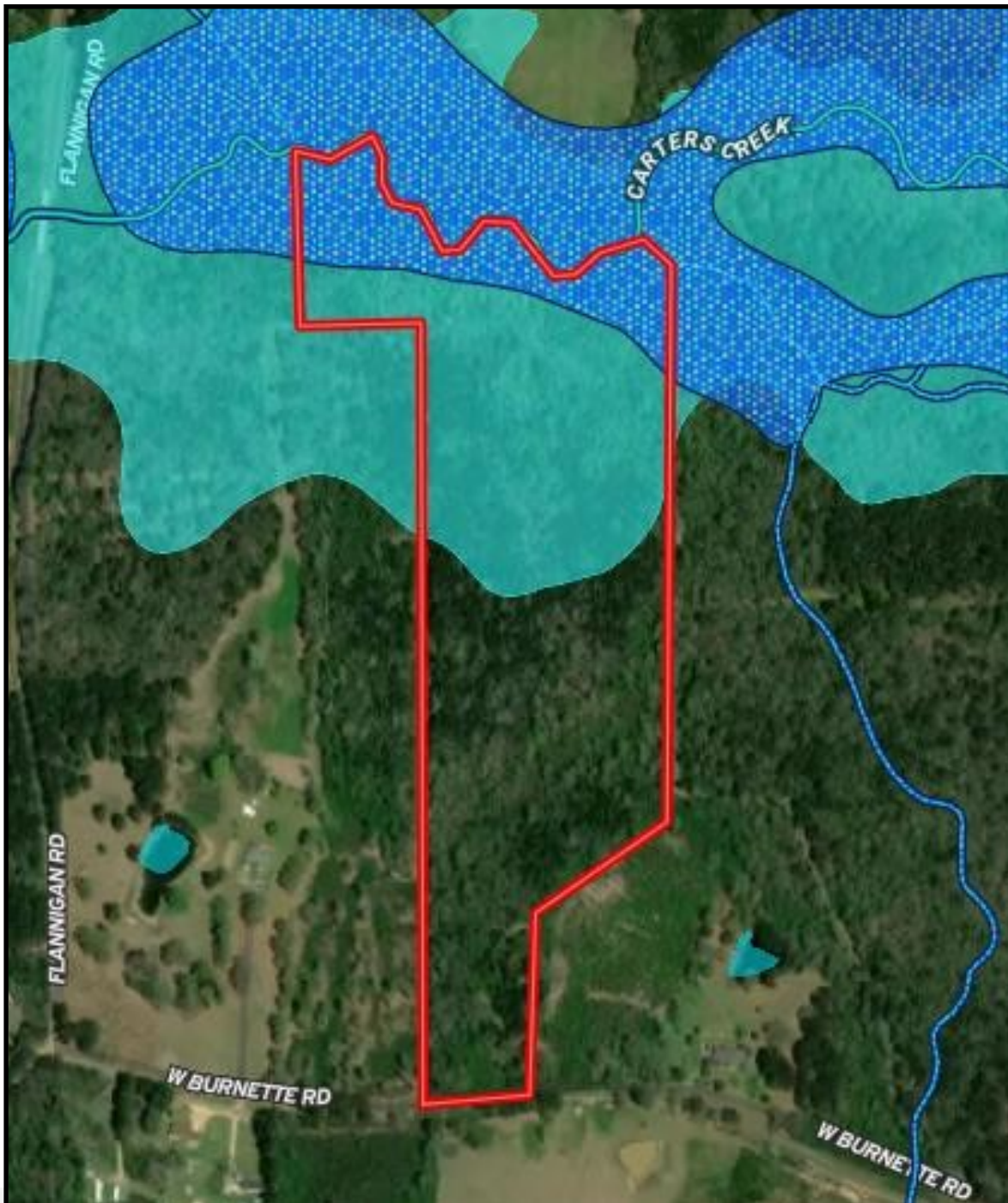
TRINITY WEBB, REALTOR®
Trinity@TomSmithHomes.com
601.990.5070 office | 769.218.7860 cell



TomSmithLandandHomes.com

Information is believed to be accurate but not guaranteed.

FLOOD MAP



call me today!

2010-2021
AMERICA'S
BEST
BROKERAGES

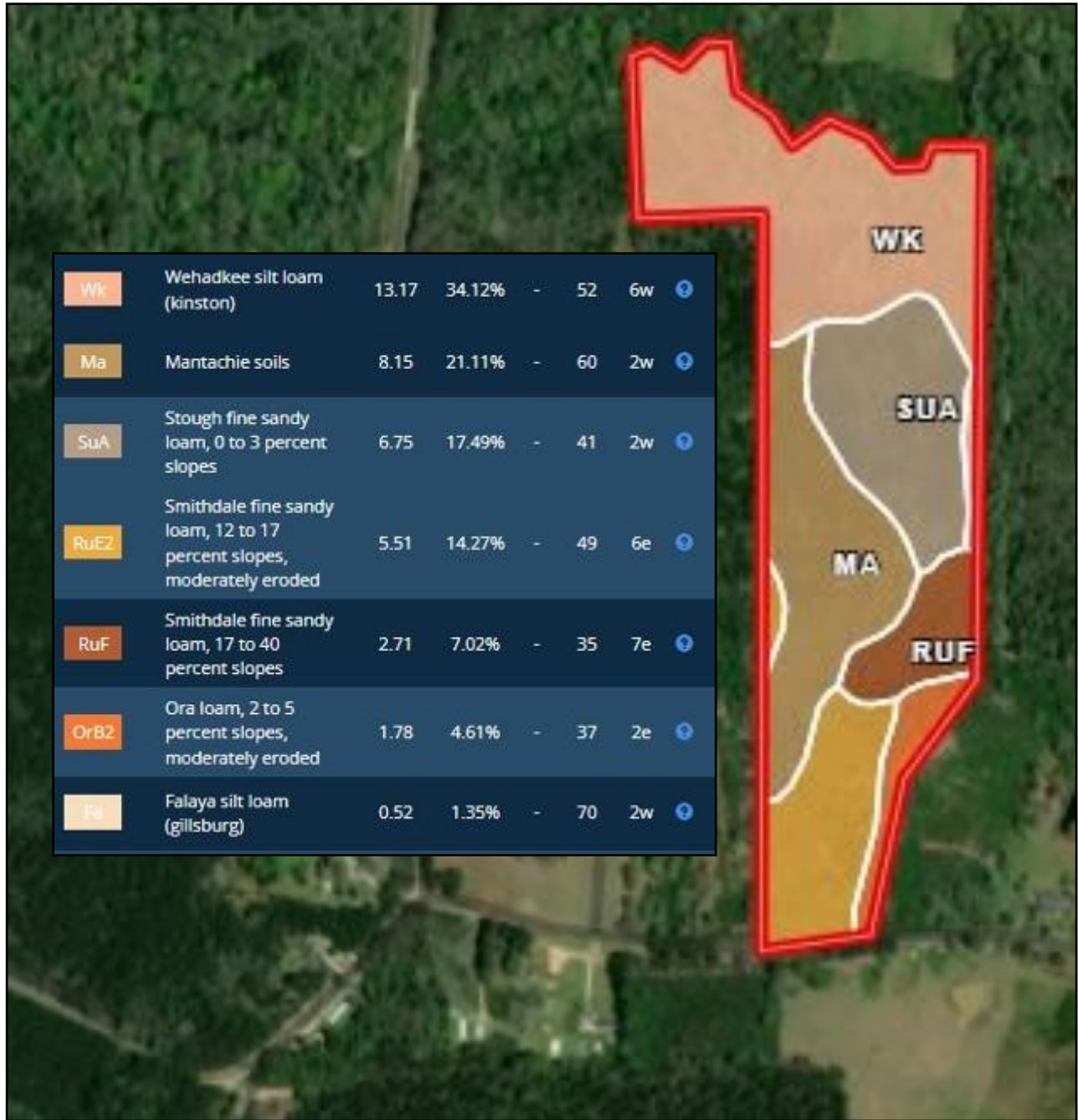
TRINITY WEBB, REALTOR®
Trinity@TomSmithHomes.com
601.990.5070 office | 769.218.7860 cell



TomSmithLandandHomes.com

Information is believed to be accurate but not guaranteed.

SOIL MAP



call me today!

TRINITY WEBB, REALTOR®

Trinity@TomSmithHomes.com

601.990.5070 office | 769.218.7860 cell

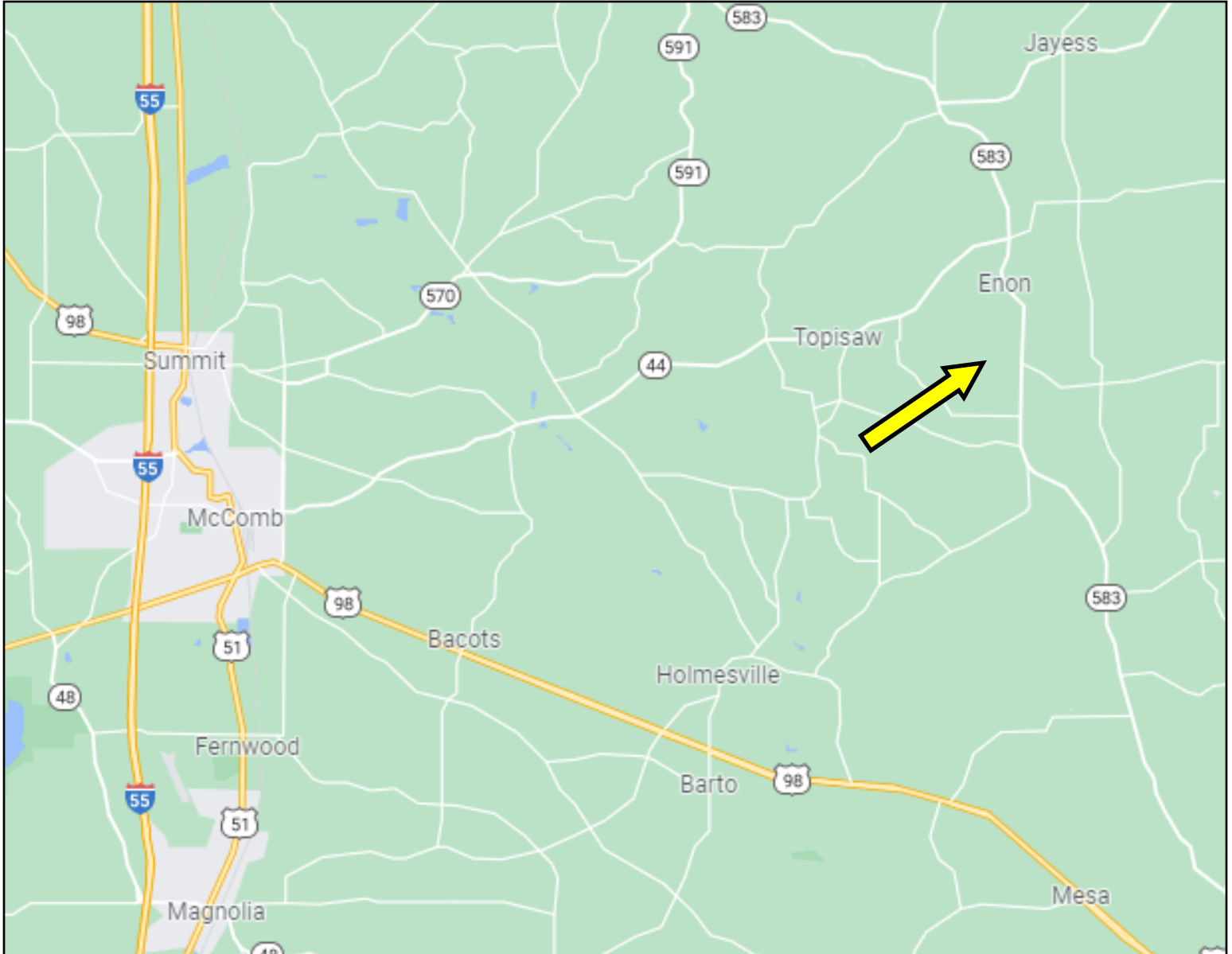


Expect More. Get More.

TomSmithLandandHomes.com

Information is believed to be accurate but not guaranteed.

DIRECTIONAL MAP



Directions from Tylertown, MS: Travel north on MS-583N for 12.4 miles, turn left onto W Burnette Rd, travel .8 miles and the property will be on the right.



call me today!

TRINITY WEBB, REALTOR®

Trinity@TomSmithHomes.com

601.990.5070 office | 769.218.7860 cell



TomSmithLandandHomes.com

Information is believed to be accurate but not guaranteed.