

# 5± ACRE HUNTING CAMP IN KISATCHIE NATIONAL FOREST GRANT PARISH, LOUISIANA



SECLUDED 5± ACRES IN GRANT PARISH, LOUISIANA! The property has an established campsite with a covered camper. There is a gated entrance for security and seclusion. The property also features a skinning rack and storage shed, great for storing hunting and other equipment. In addition there are deer stands and feeders ready to go! Hardwoods and rolling hills with a good internal road system allow access to the abundant turkey, deer, and hog hunting to be had. The 5± acre camp joins Kisatchie National Forest boasting thousands of public hunting land. Check out this excellent hunting property today!

Directions from Alexandria, LA: Travel north on LA-28E/US-167N for 4.0 miles, take exit toward Monroe, travel .2 miles and merge onto US-165N/Monroe Hwy, travel 10 miles and turn right onto Walker Ferry Rd, travel 3.9 miles and turn right to stay on Walker Ferry Rd, travel 1.3 miles and turn right onto Dug Leckie Cutoff, the property will be on the right in .3 miles.



*call me today!*

**PRESTON SMITH**, MANAGING BROKER  
Preston@TomSmithLand.com  
601.990.5070 office | 601.209.7150 cell



**TomSmithLandandHomes.com**





**PRESTON SMITH**, MANAGING BROKER  
 Preston@TomSmithLand.com  
 601.990.5070 office | 601.209.7150 cell

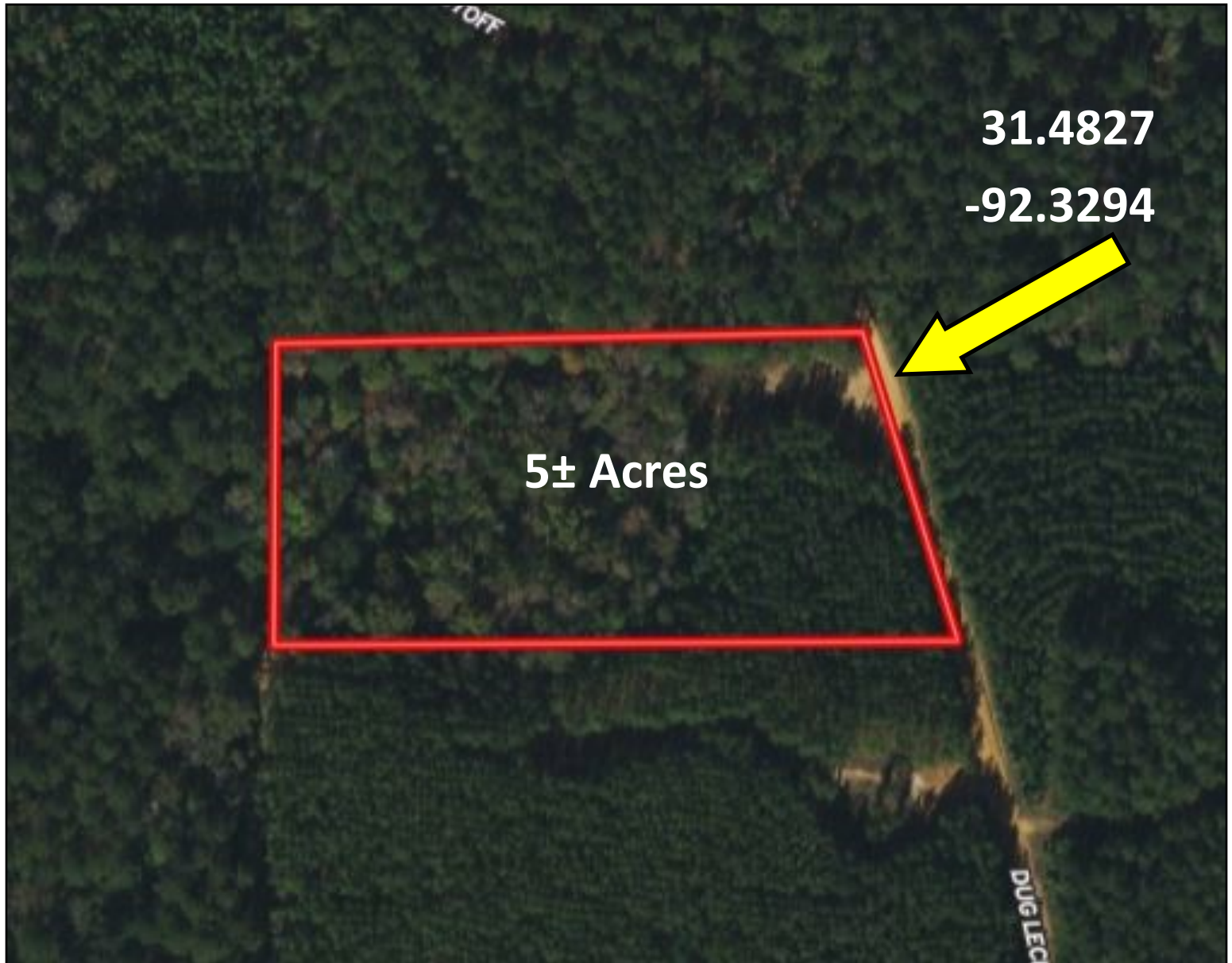


**TomSmithLandandHomes.com**

Information is believed to be accurate but not guaranteed.



# Aerial Map



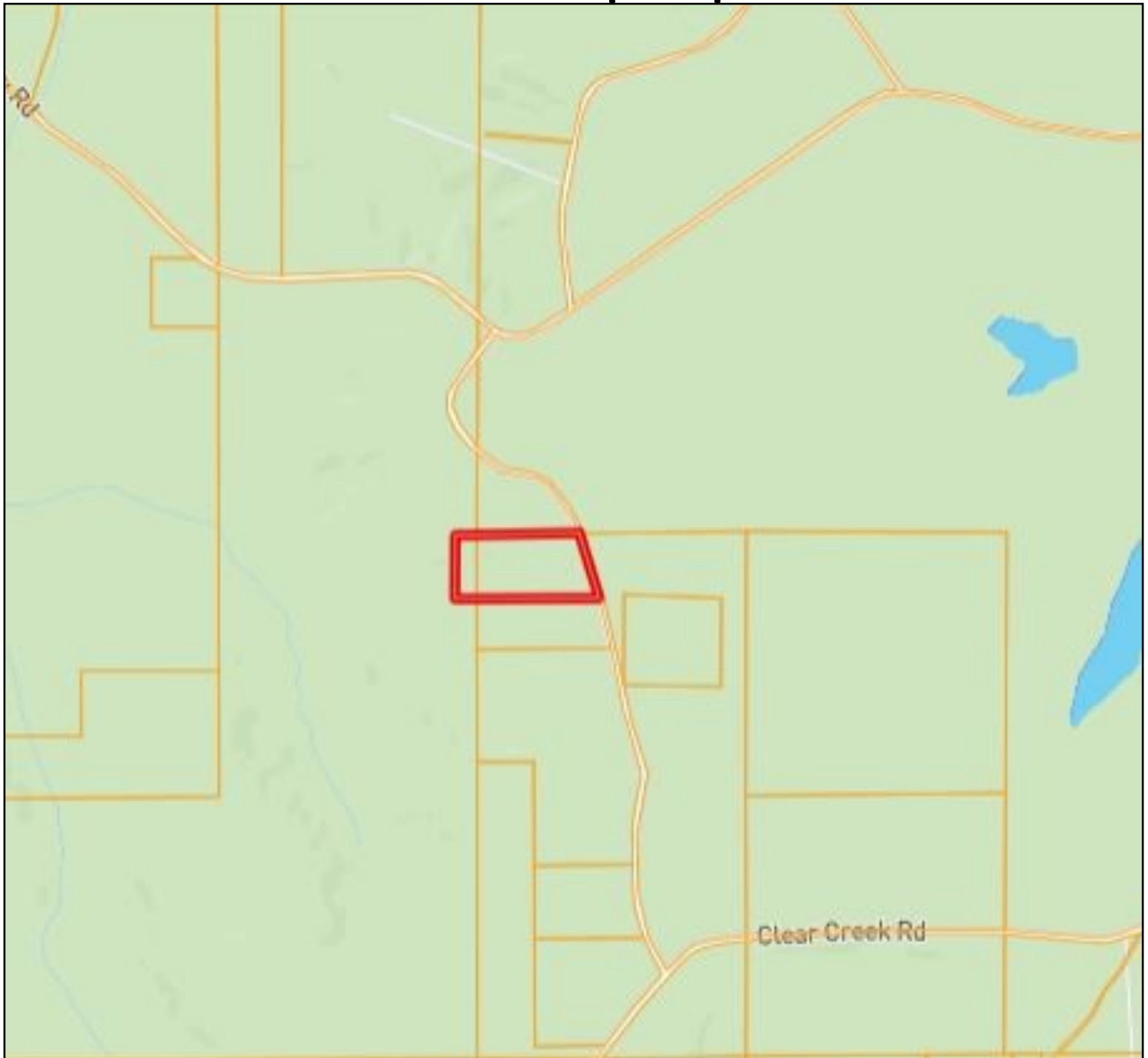
**PRESTON SMITH**, MANAGING BROKER  
Preston@TomSmithLand.com  
601.990.5070 office | 601.209.7150 cell



**TomSmithLandandHomes.com**

Information is believed to be accurate but not guaranteed.

# Ownership Map



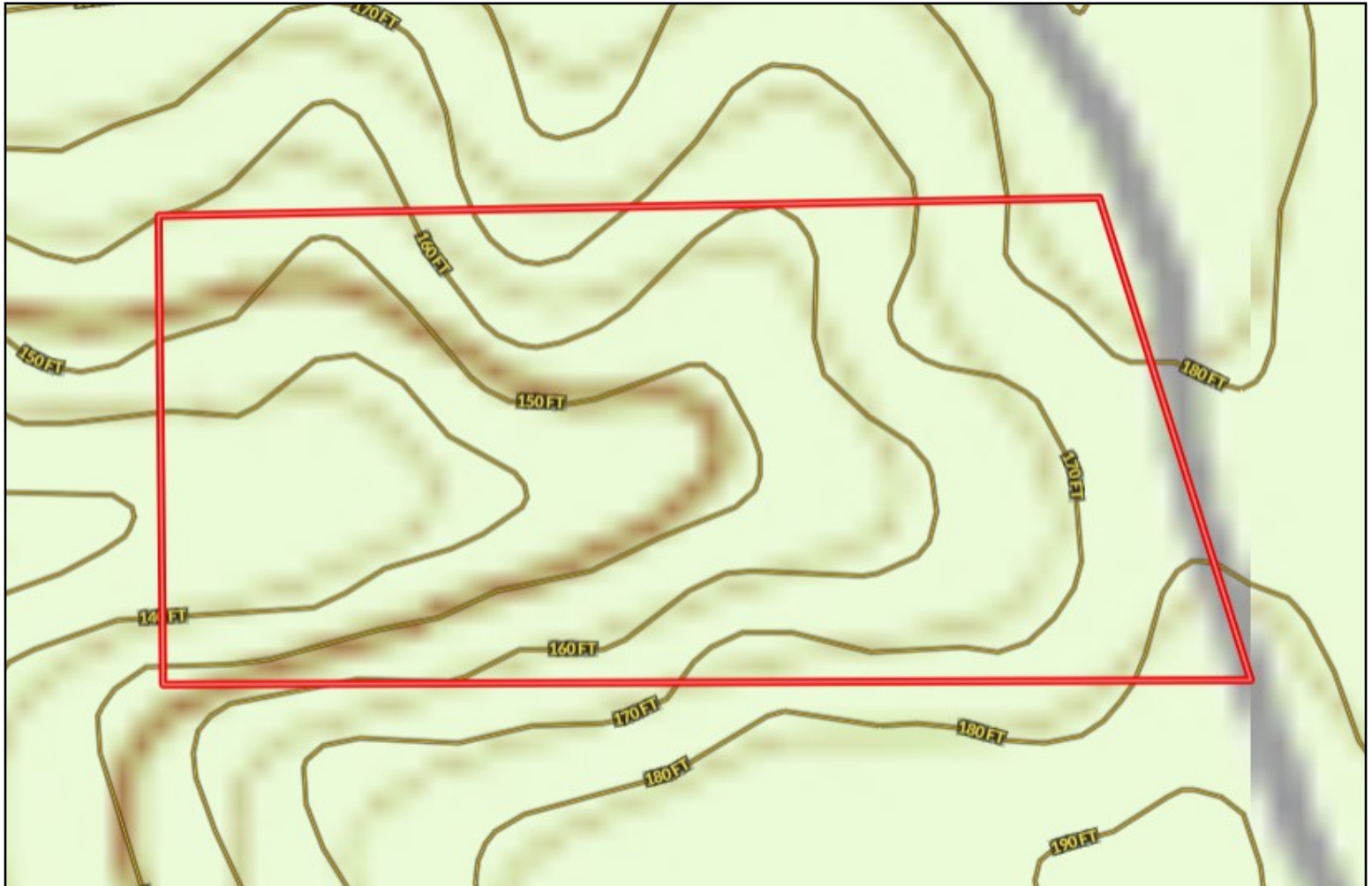
**PRESTON SMITH**, MANAGING BROKER  
Preston@TomSmithLand.com  
601.990.5070 office | 601.209.7150 cell



**TomSmithLandandHomes.com**

Information is believed to be accurate but not guaranteed.

# Topography Map



**PRESTON SMITH**, MANAGING BROKER  
Preston@TomSmithLand.com  
601.990.5070 office | 601.209.7150 cell

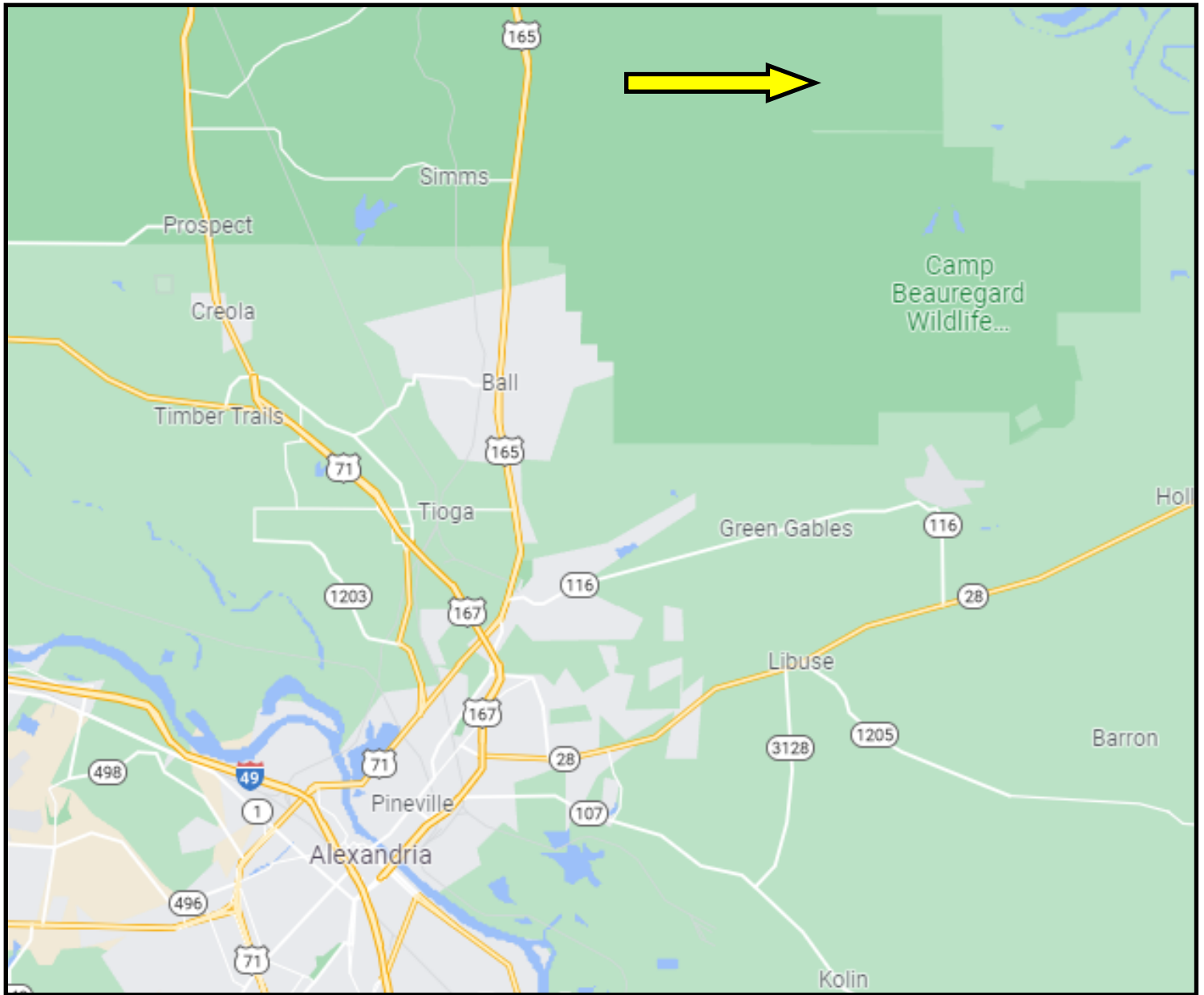


**TomSmithLandandHomes.com**

Information is believed to be accurate but not guaranteed.



# Directional Map



Directions from Alexandria, LA: Travel north on LA-28E/US-167N for 4.0 miles, take exit toward Monroe, travel .2 miles and merge onto US-165N/Monroe Hwy, travel 10 miles and turn right onto Walker Ferry Rd, travel 3.9 miles and turn right to stay on Walker Ferry Rd, travel 1.3 miles and turn right onto Dug Leckie Cutoff, the property will be on the right in .3 miles.



**PRESTON SMITH**, MANAGING BROKER  
Preston@TomSmithLand.com  
601.990.5070 office | 601.209.7150 cell



## TomSmithLandandHomes.com

Information is believed to be accurate but not guaranteed.