



# Beautiful Home on 16+/- Acres Lincoln County, MS



**\$283,500**

2719 Pearlie Drive NW Brookhaven, MS 39601

Come see this beautiful home in Lincoln County, MS! This three bedroom, two bath, brick exterior home has two living spaces, a dining room with a view of live oaks, a spacious kitchen with an island, and a cozy little sunroom. This home is located in Brookhaven and is situated on 16+/- acres of level pasture land with asphalt entry and cattle gap bringing you right up to a fenced in yard and a 2 car garage. The garage is heated and cooled for the buyer who would like the option of a 4th bedroom or a recreational room/storage. If the interior of this 2,753 +/- square foot home doesn't beg you to sit and stay awhile, the live oaks blanketing the front exterior draped in lights will. The spacious front porch is a party for a few while the covered, screened in back patio serves as an entertainment space for all, no matter the weather, event or occasion. Yes! Even game day. Call Sabrina to schedule your showing today!

Directions from the intersection of Hwy 51 N and New Sight Drive NE in Brookhaven, MS: Turn right onto New Sight Drive NE and travel 1.8 miles. Turn left onto New Hope Trail NE and travel 0.4 miles. Turn right onto Pearlie Drive NW. Travel 0.3 miles and the house is on the left. Address: 2719 Pearlie Drive NW Brookhaven, MS 39601



2010-2021  
AMERICA'S  
**BEST**  
BROKERAGES

*call me today!*

**SABRINA WOLFF**, REALTOR®  
Sabrina@TomSmithHomes.com  
601.990.5070 office | 601.754.3763 cell



Expect More. Get More.

**TomSmithLandandHomes.com**

Information is believed to be accurate but not guaranteed.



*Call me today!*

**SABRINA WOLFE, REALTOR®**  
Sabrina@TomSmithHomes.com  
601.990.5070 office | 601.754.3763 cell



**TomSmithLandandHomes.com**

Information is believed to be accurate but not guaranteed.



LandReport  
2010-2021  
AMERICAN  
BEST  
BROKERAGES

*Call me today!*

**SABRINA WOLFE, REALTOR®**  
Sabrina@TomSmithHomes.com  
601.990.5070 office | 601.754.3763 cell



**TomSmithLandandHomes.com**

Information is believed to be accurate but not guaranteed.



LandReport  
2010-2021  
AMERICAN  
BEST  
BROKERAGES

*Call me today!*

**SABRINA WOLFE, REALTOR®**  
Sabrina@TomSmithHomes.com  
601.990.5070 office | 601.754.3763 cell



Expect More. Get More.

**TomSmithLandandHomes.com**

Information is believed to be accurate but not guaranteed.

# Aerial Map



*Call me today!*

**SABRINA WOLFF**, REALTOR®

Sabrina@TomSmithHomes.com

601.990.5070 office | 601.754.3763 cell

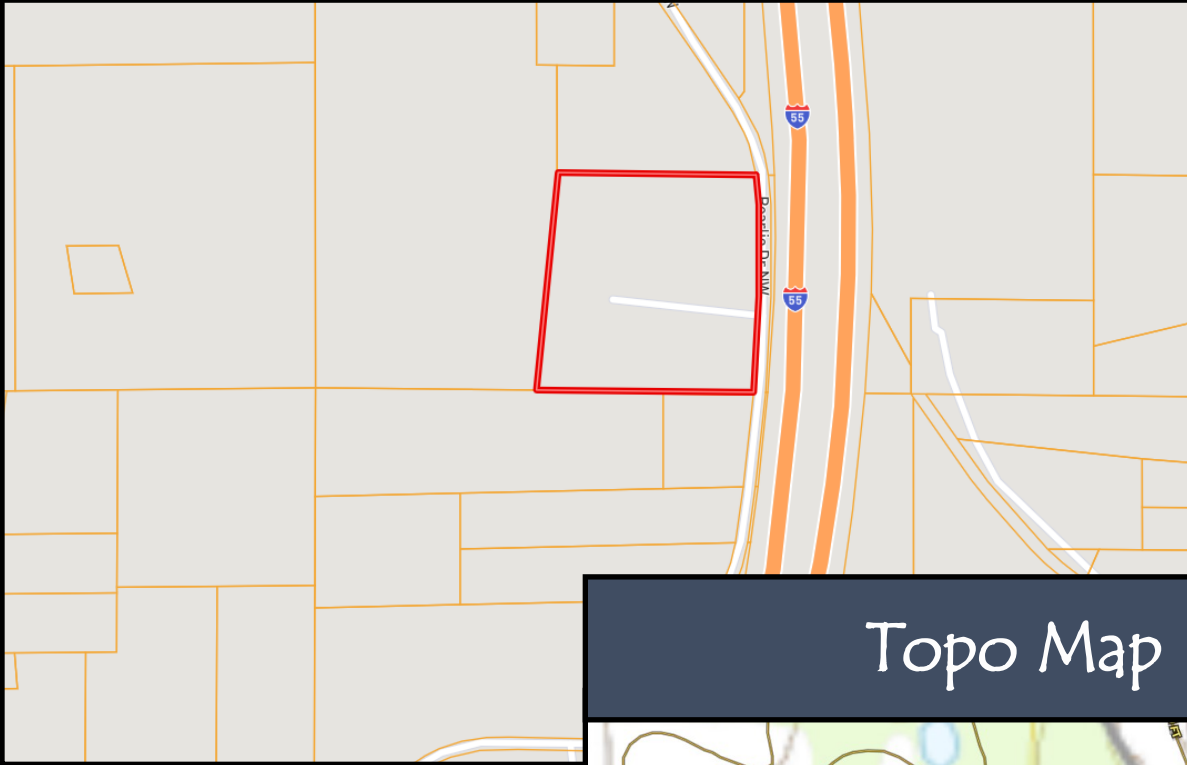


Expect More. Get More.

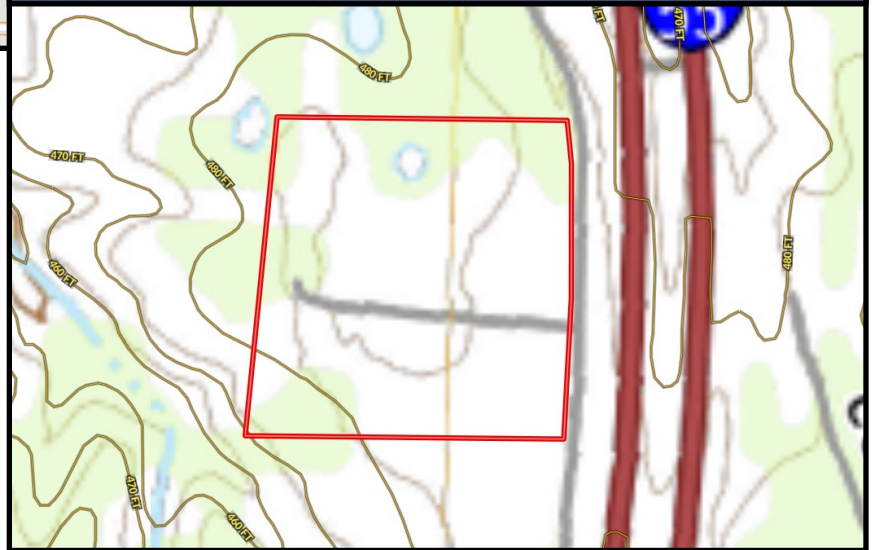
**TomSmithLandandHomes.com**

Information is believed to be accurate but not guaranteed.

# Ownership Map



# Topo Map



*Call me today!*

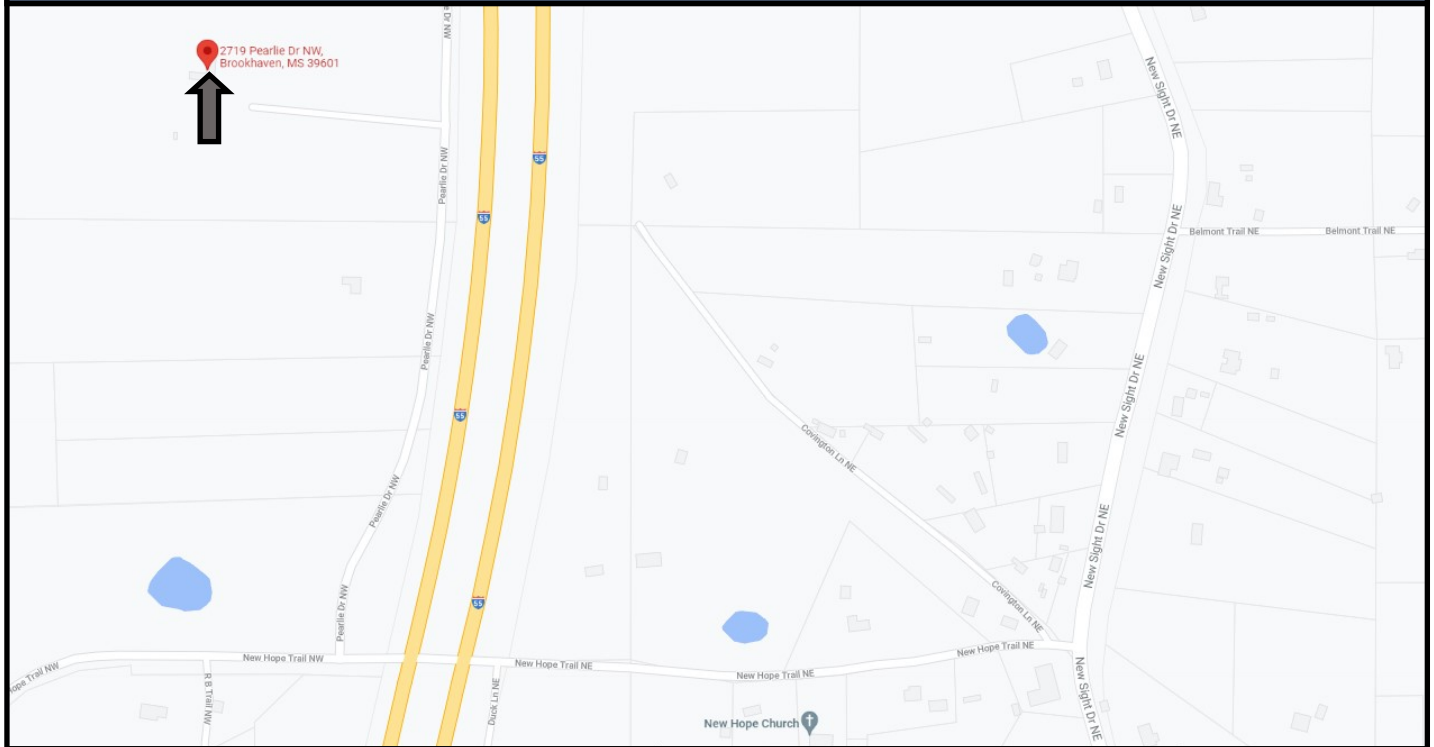
**SABRINA WOLFF**, REALTOR®  
Sabrina@TomSmithHomes.com  
601.990.5070 office | 601.754.3763 cell



**TomSmithLandandHomes.com**

Information is believed to be accurate but not guaranteed.

# Directional Map



Directions from the intersection of Hwy 51 N and New Sight Drive NE in Brookhaven, MS: Turn right onto New Sight Drive NE and travel 1.8 miles. Turn left onto New Hope Trail NE and travel 0.4 miles. Turn right onto Pearlle Drive NW. Travel 0.3 miles and the house is on the left. Address: 2719 Pearlle Drive NW Brookhaven, MS 39601



*call me today!*

**SABRINA WOLFF**, REALTOR®  
Sabrina@TomSmithHomes.com  
601.990.5070 office | 601.754.3763 cell



Expect More. Get More.

**TomSmithLandandHomes.com**

Information is believed to be accurate but not guaranteed.