



HUNTING PARADISE

75± ACRES IN JASPER COUNTY, MS



\$2,725/ACRE

Welcome to Jasper County, MS. This is where you will find this amazing 75 +/- acre hunting paradise that is turn key for you and your family to hunt for trophy whitetail and longbeards! Complete with four great massive food plots, all with shooting houses, you will want to spend the entire day hunting the fields and gorgeous views! The property has a great road system that connects all plots and allows you not to disturb others while traveling across the property. There are also five double ladder stands strategically placed throughout the property. The timber comprises primarily 19-20-year-old second-generation loblolly pine that is ready to be thinned in the next couple of years and is a very healthy stand. A couple of hardwood veins also provide excellent protein for your herd. The property is located in the Pearcetown Community and has paved frontage and community water and power available. There are several cabin sites to choose from, and the property is not in a flood zone. You will enjoy the gently rolling terrain and beauty of this property and will also watch your money grow as your timber matures over the next few years! This is one of those perfectly sized tracts with everything that you are looking for! Drop your excuses and look at this one. It will not last long! Call Tom TODAY!



Call The Land Man Today!

TOM SMITH, ALC®, BROKER

Tom@TomSmithLand.com

601.898.2772 **office** | 601.454.9397 **cell**

112 Village Blvd, Madison, MS 39110



Expect More. Get More.



TomSmithLandandHomes.com

Information is believed to be accurate but not guaranteed.



TOM SMITH, ALC®, BROKER
 Tom@TomSmithLand.com
 601.898.2772 office | 601.454.9397 cell



TomSmithLandandHomes.com

Information is believed to be accurate but not guaranteed.



TOM SMITH, ALC®, BROKER
 Tom@TomSmithLand.com
 601.898.2772 office | 601.454.9397 cell



TomSmithLandandHomes.com

Information is believed to be accurate but not guaranteed.



TOM SMITH, ALC®, BROKER
Tom@TomSmithLand.com
601.898.2772 office | 601.454.9397 cell



TomSmithLandandHomes.com

Information is believed to be accurate but not guaranteed.



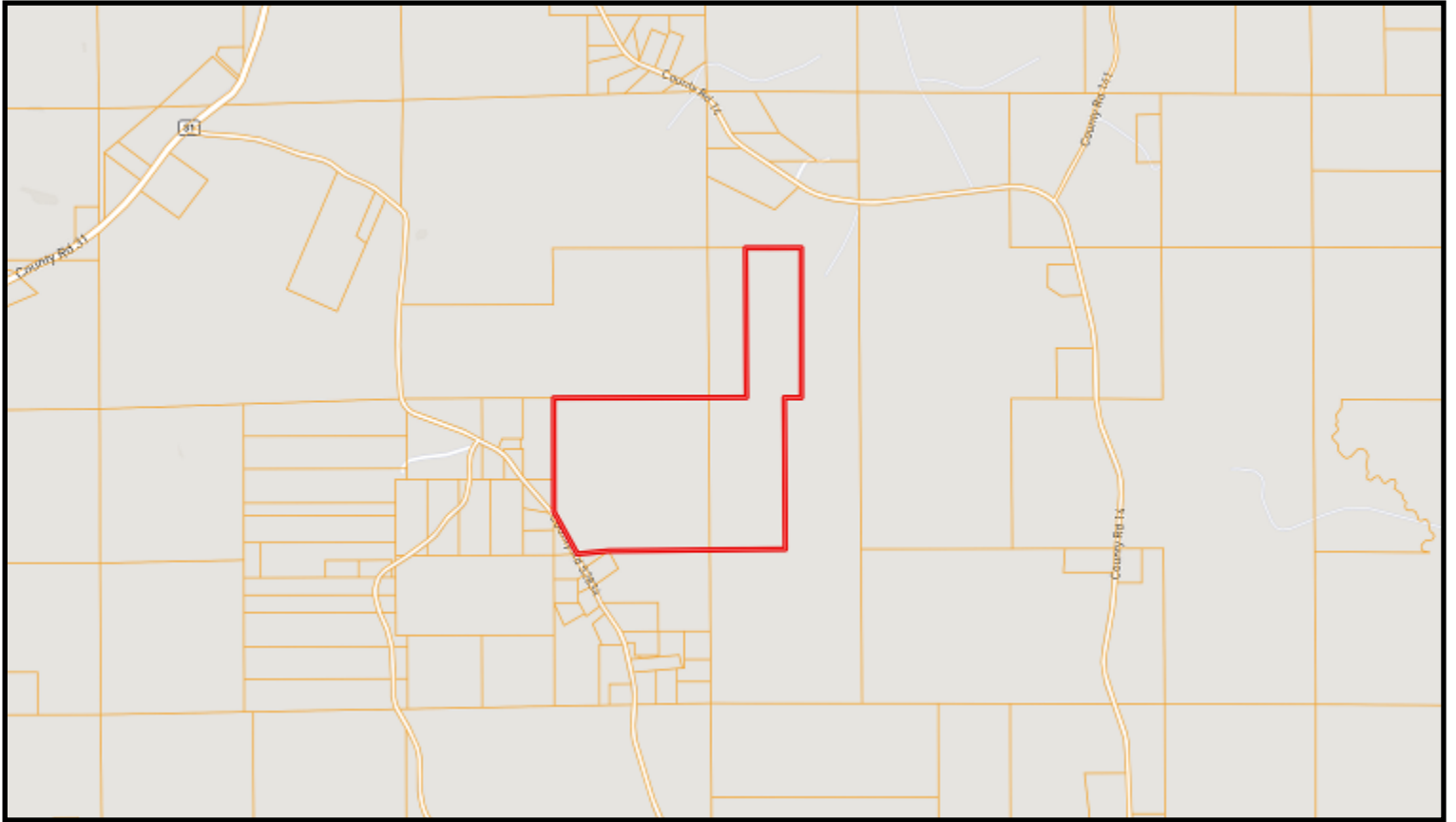
TOM SMITH, ALC®, BROKER
 Tom@TomSmithLand.com
 601.898.2772 office | 601.454.9397 cell



TomSmithLandandHomes.com

Information is believed to be accurate but not guaranteed.

OWNERSHIP MAP



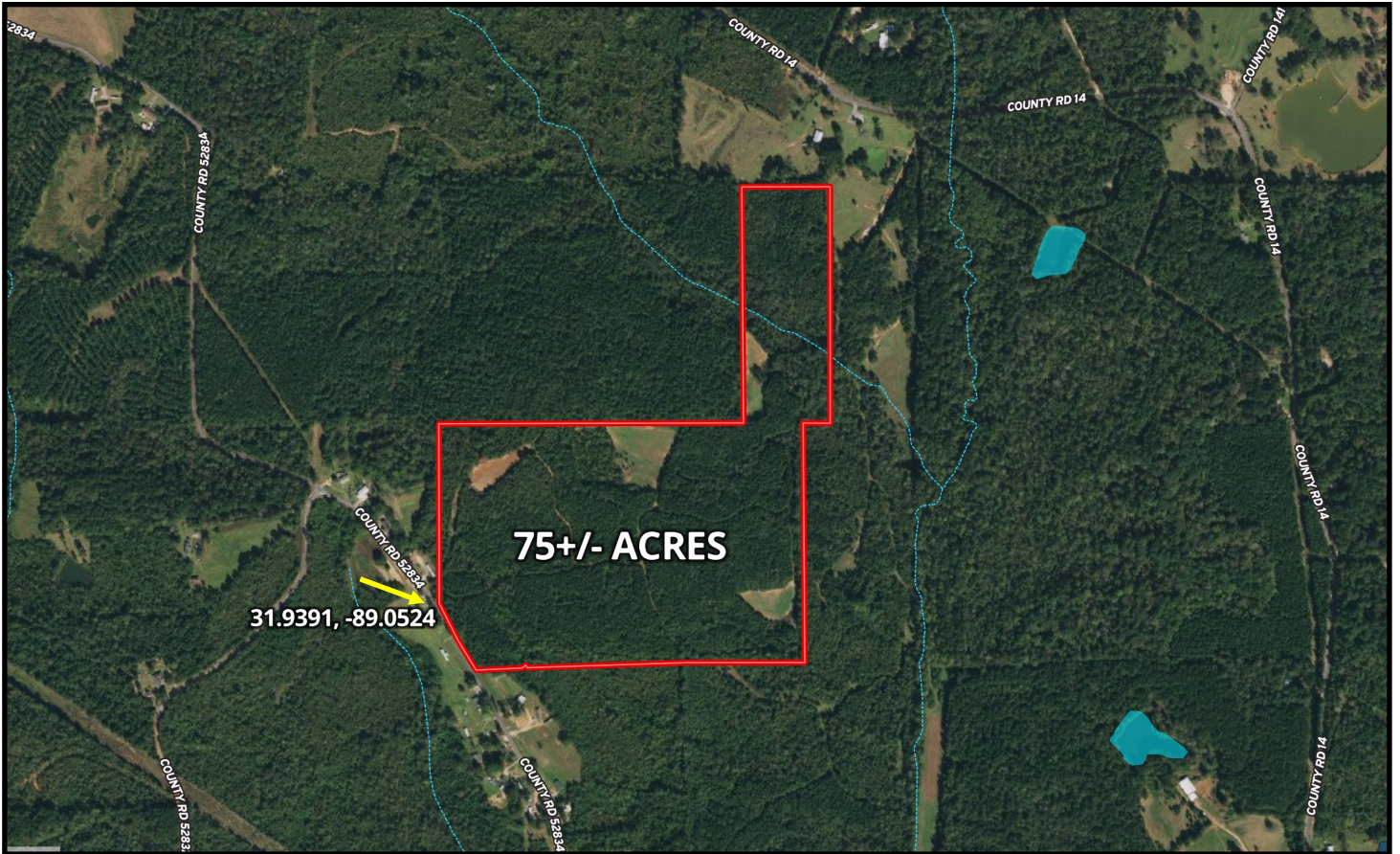
TOM SMITH, ALC®, BROKER
Tom@TomSmithLand.com
601.898.2772 **office** | 601.454.9397 **cell**



TomSmithLandandHomes.com

Information is believed to be accurate but not guaranteed.

AERIAL MAP



[CLICK HERE FOR AN INTERACTIVE MAP](#)



TOM SMITH, ALC®, BROKER
Tom@TomSmithLand.com
601.898.2772 **office** | 601.454.9397 **cell**



TomSmithLandandHomes.com

Information is believed to be accurate but not guaranteed.

TOPO MAP



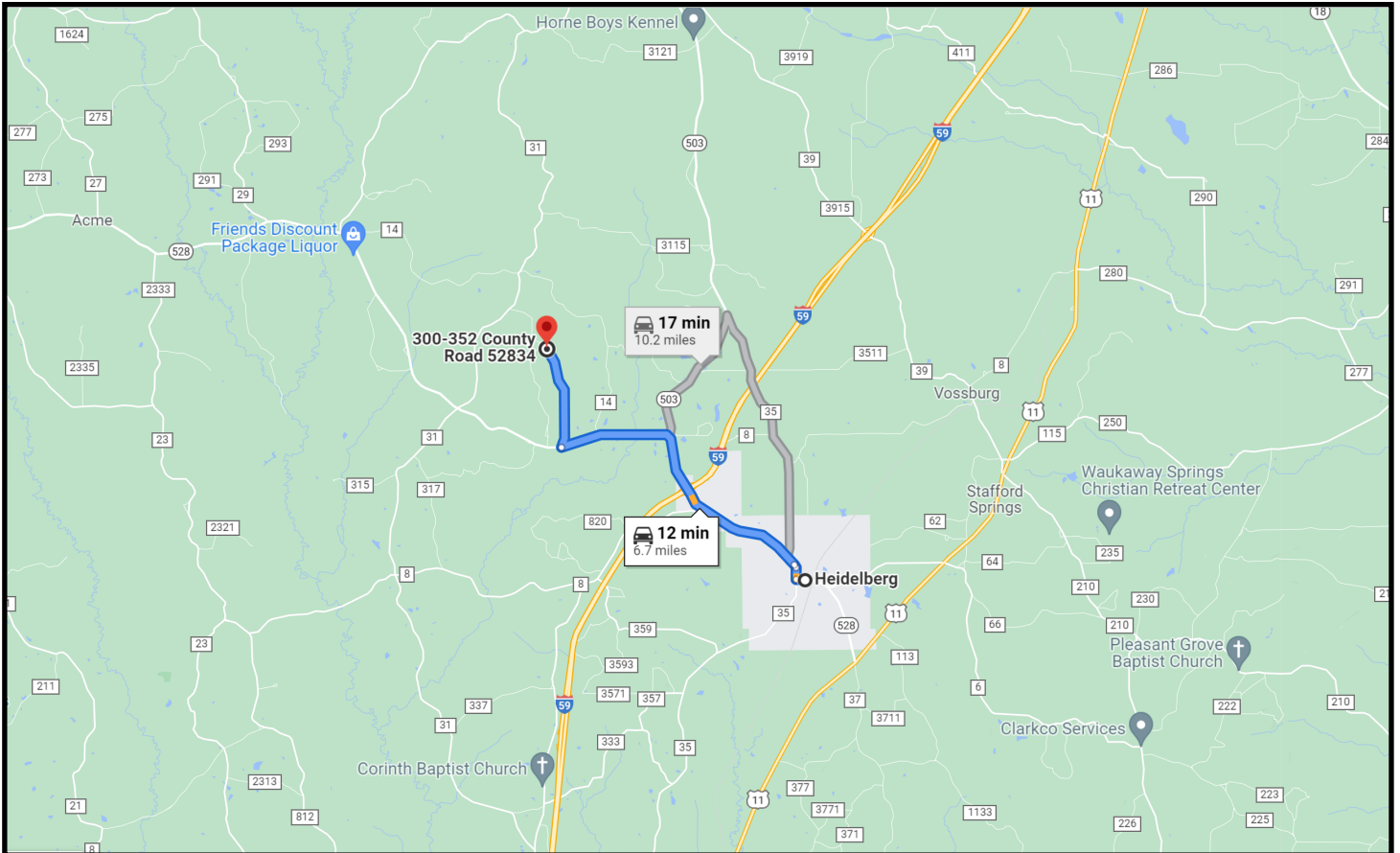
TOM SMITH, ALC®, BROKER
Tom@TomSmithLand.com
601.898.2772 office | 601.454.9397 cell



TomSmithLandandHomes.com

Information is believed to be accurate but not guaranteed.

DIRECTIONAL MAP



DIRECTIONS FROM THE INTERSECTION OF HWY 35 AND HWY 628 IN HEIDELBERG, MS: Travel Hwy 628 West for 6.3 miles. Turn right on County Road 52834, after approximately 1.6 miles the property will be on your right.
[GOOGLE MAP LINK](#)



Call The Land Man Today!

TOM SMITH, ALC®, BROKER
Tom@TomSmithLand.com
601.898.2772 **office** | 601.454.9397 **cell**

112 Village Blvd, Madison, MS 39110



Expect More. Get More.

TomSmithLandandHomes.com

Information is believed to be accurate but not guaranteed.