

47.07+ /- Acre Development Tract Pike County, MS



Take a look at this 47.07+ /- acre tract in Pike County, MS. This property is zoned residential with road frontage on Delaware Avenue and Schmidt Road and would be an ideal location for a residential development. The property features a good internal road system, rolling hills, a mature stand of pine timber, a seasonal creek and water and electricity are available. It is conveniently located minutes from I55, and all the amenities McComb has to offer. Call Tara today to schedule a viewing!

Directions from exit 17 on I-55 S in McComb, MS: Turn right onto Delaware Avenue, and travel 0.8 miles. Take a sharp left onto Schmidt Road the property will be approximately 0.2 miles on the left.



Call me today!

TARA WALKER SMITH, REALTOR®
Tara@TomSmithHomes.com
601.990.5070 **office** | 601.407.4315 **cell**



TomSmithLandandHomes.com

Information is believed to be accurate but not guaranteed.



LandReport
2011-2021
NATIONAL
BEST
BROKERAGES

Call me today!

TARA WALKER SMITH, REALTOR®
Tara@TomSmithHomes.com
601.990.5070 **office** | 601.407.4315 **cell**



TomSmithLandandHomes.com

Information is believed to be accurate but not guaranteed.

Aerial Map



Call me today!

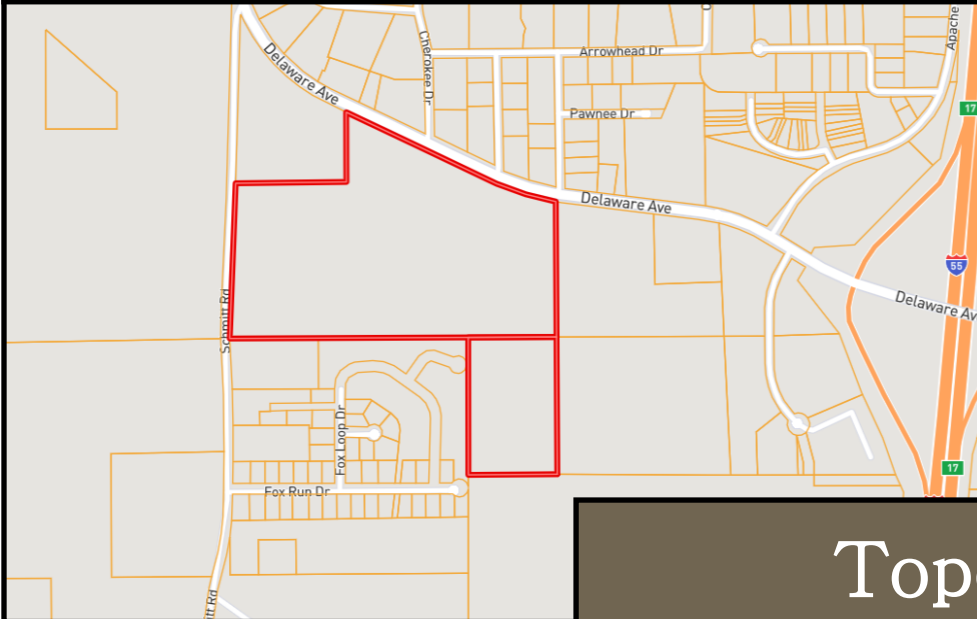
TARA WALKER SMITH, REALTOR®
Tara@TomSmithHomes.com
601.990.5070 **office** | 601.407.4315 **cell**



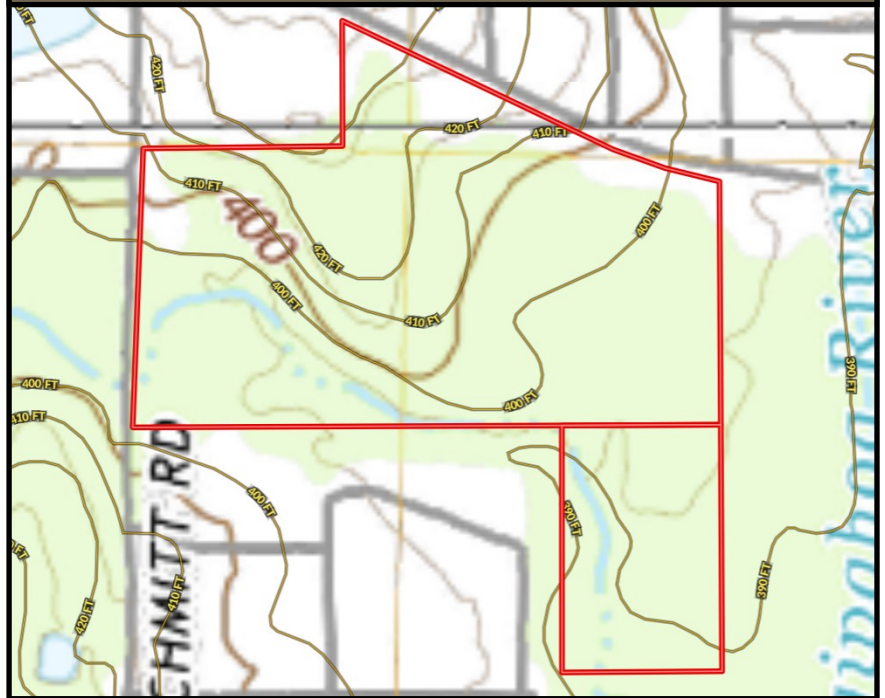
TomSmithLandandHomes.com

Information is believed to be accurate but not guaranteed.

Ownership Map



Topo Map



2011-2021
AMERICA'S
BEST
BROKERAGES

Call me today!

TARA WALKER SMITH, REALTOR®
Tara@TomSmithHomes.com
601.990.5070 **office** | 601.407.4315 **cell**

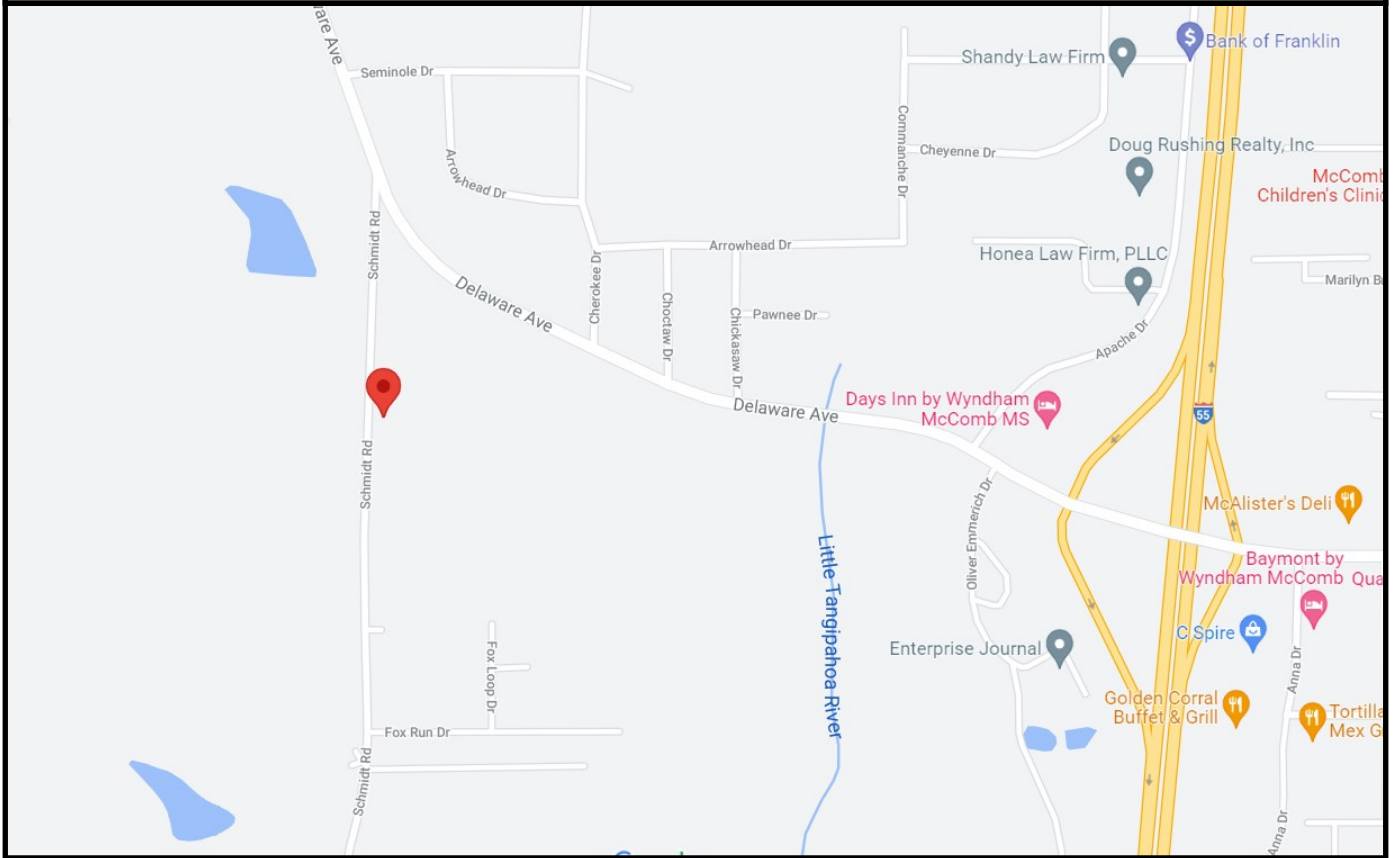
**Tom
Smith
LAND AND
HOMES**

Expect More. Get More.

TomSmithLandandHomes.com

Information is believed to be accurate but not guaranteed.

Directional Map



Directions from exit 17 on I-55 S in McComb, MS: Turn right onto Delaware Avenue, and travel 0.8 miles. Take a sharp left onto Schmidt Road the property will be approximately 0.2 miles on the left.



Call me today!

TARA WALKER SMITH, REALTOR®
Tara@TomSmithHomes.com
601.990.5070 **office** | 601.407.4315 **cell**



TomSmithLandandHomes.com

Information is believed to be accurate but not guaranteed.