

# SOUTH MISSISSIPPI POULTRY FARM

## 80± Acres in Covington and Jones Counties, MS



**\$535,000**

If you are looking to get into the poultry business, this property is just for you! This 80 +/- acre property is located in Jones and Covington Counties and features three chicken houses that are fully operational and ready to go. The property has everything you need to be quickly set up and running. It comes with two pole barns to store all your equipment and is also fully fenced and even ready to run cattle. There is a freshwater stream on the property with a small pond for the cattle. This is the ideal property for someone looking to get into the poultry or cattle business. Call Brett Carney to schedule a private showing.



*Call me today!*

**BRETT CARNEY**, REALTOR®  
Brett@TomSmithLand.com  
662.268.6333 **office** | 601.710.9633 **cell**



**TomSmithLandandHomes.com**

Information is believed to be accurate but not guaranteed.



**BRETT CARNEY**, REALTOR®  
 Brett@TomSmithLand.com  
 662.268.6333 **office** | 601.710.9633 **cell**



**TomSmithLandandHomes.com**

Information is believed to be accurate but not guaranteed.





**BRETT CARNEY**, REALTOR®  
 Brett@TomSmithLand.com  
 662.268.6333 **office** | 601.710.9633 **cell**



**TomSmithLandandHomes.com**

Information is believed to be accurate but not guaranteed.





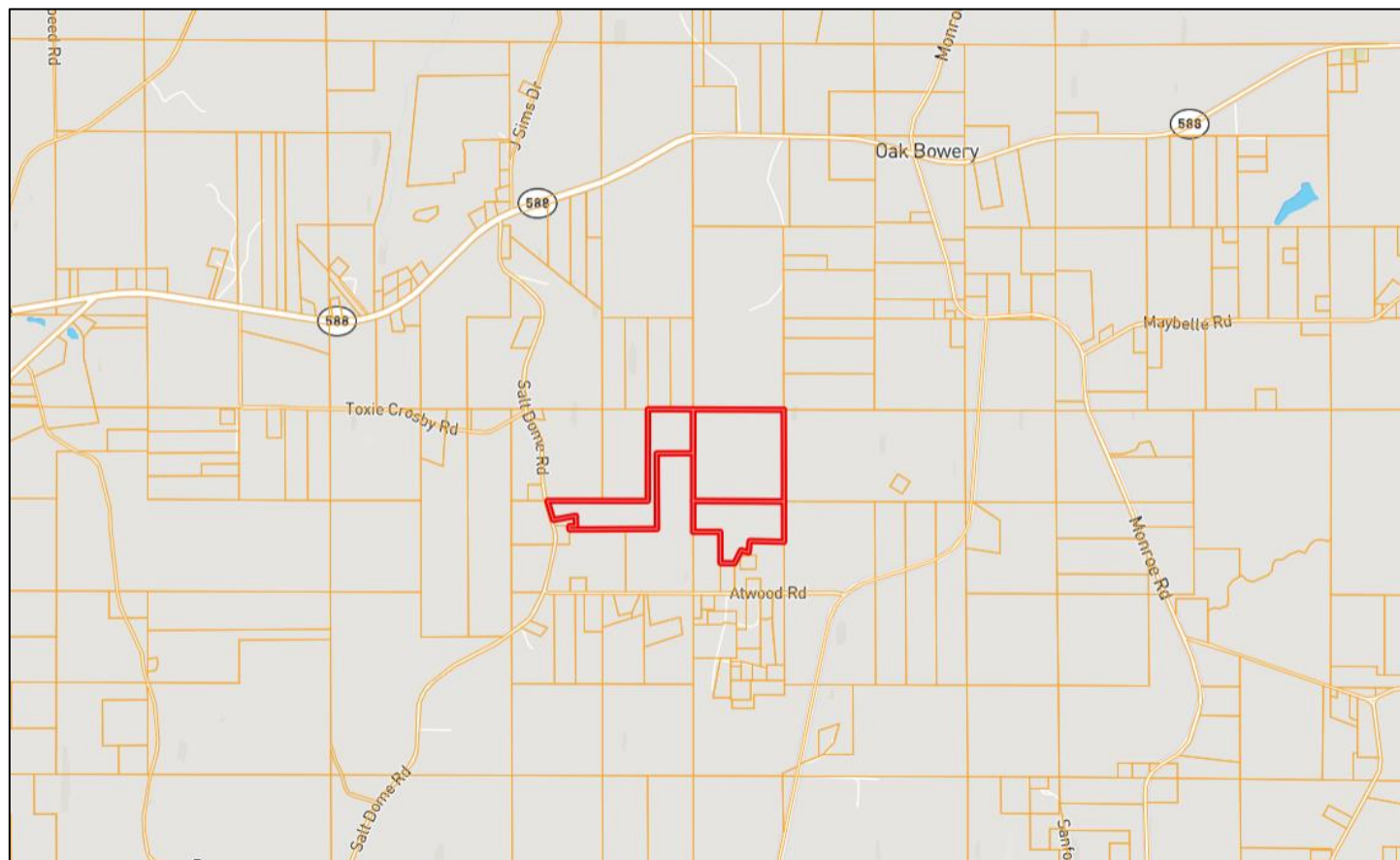
**BRETT CARNEY**, REALTOR®  
 Brett@TomSmithLand.com  
 662.268.6333 office | 601.710.9633 cell



**TomSmithLandandHomes.com**

Information is believed to be accurate but not guaranteed.

# Ownership Map



**BRETT CARNEY**, REALTOR®  
Brett@TomSmithLand.com  
662.268.6333 **office** | 601.710.9633 **cell**

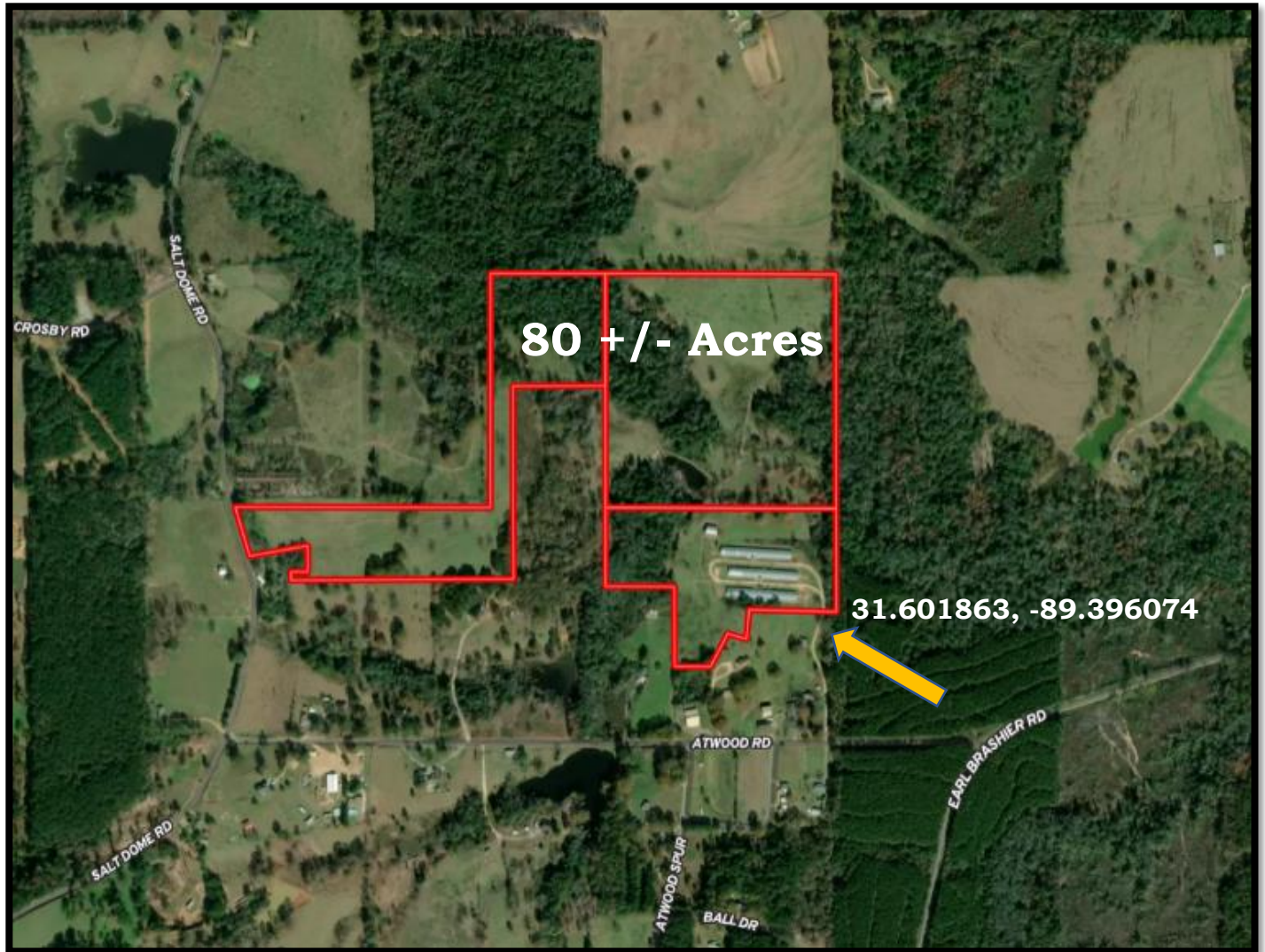


**TomSmithLandandHomes.com**

Information is believed to be accurate but not guaranteed.



# Aerial Map



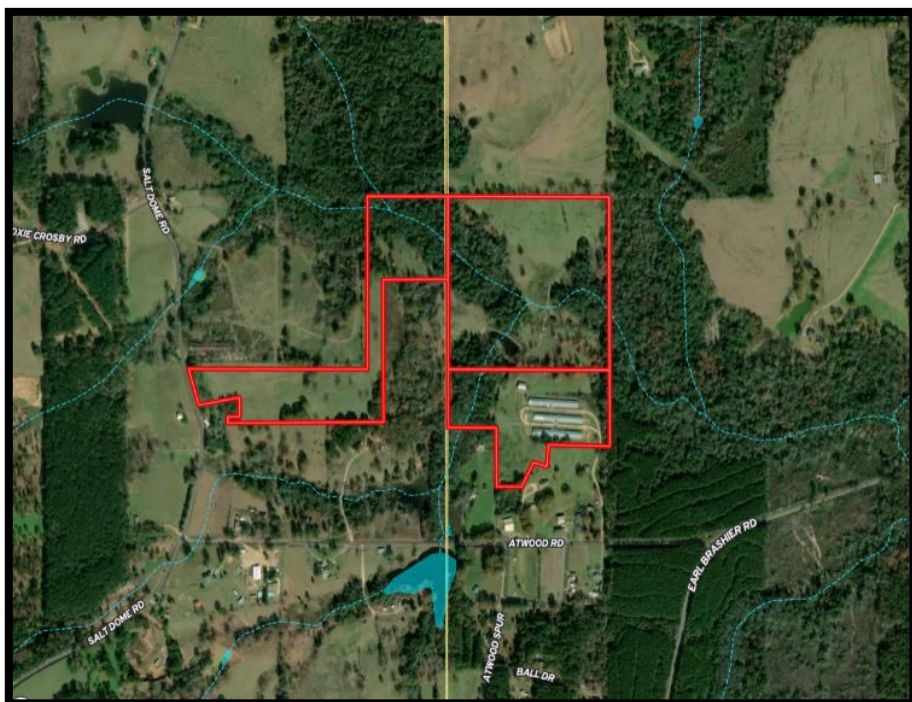
**BRETT CARNEY**, REALTOR®  
Brett@TomSmithLand.com  
662.268.6333 **office** | 601.710.9633 **cell**



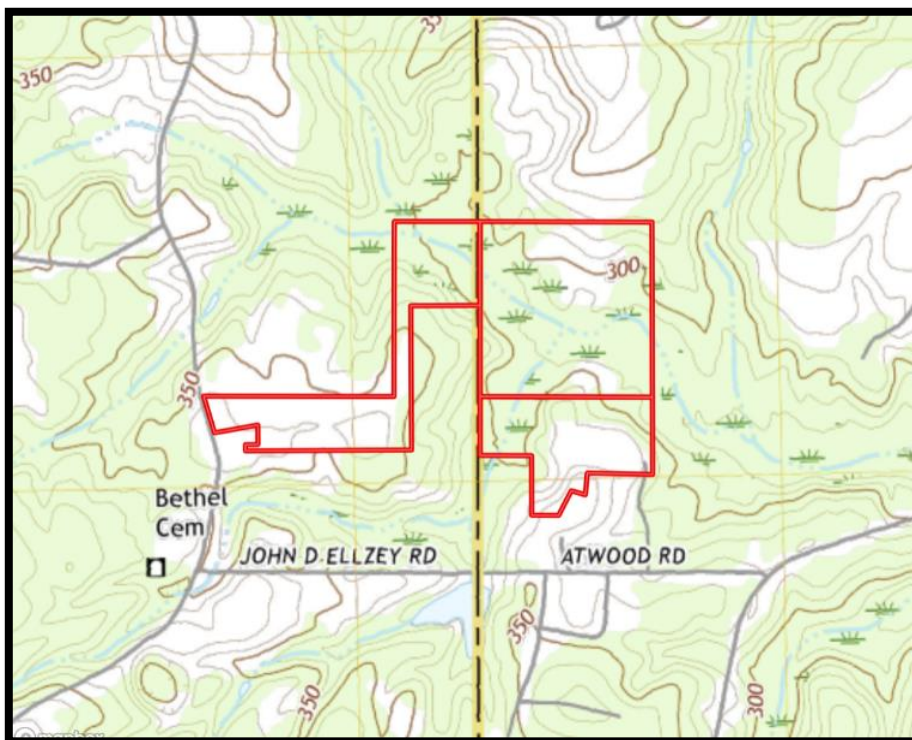
**TomSmithLandandHomes.com**

Information is believed to be accurate but not guaranteed.

# FEMA Flood Map



# TOPO Map



**BRETT CARNEY**, REALTOR®  
Brett@TomSmithLand.com  
662.268.6333 **office** | 601.710.9633 **cell**

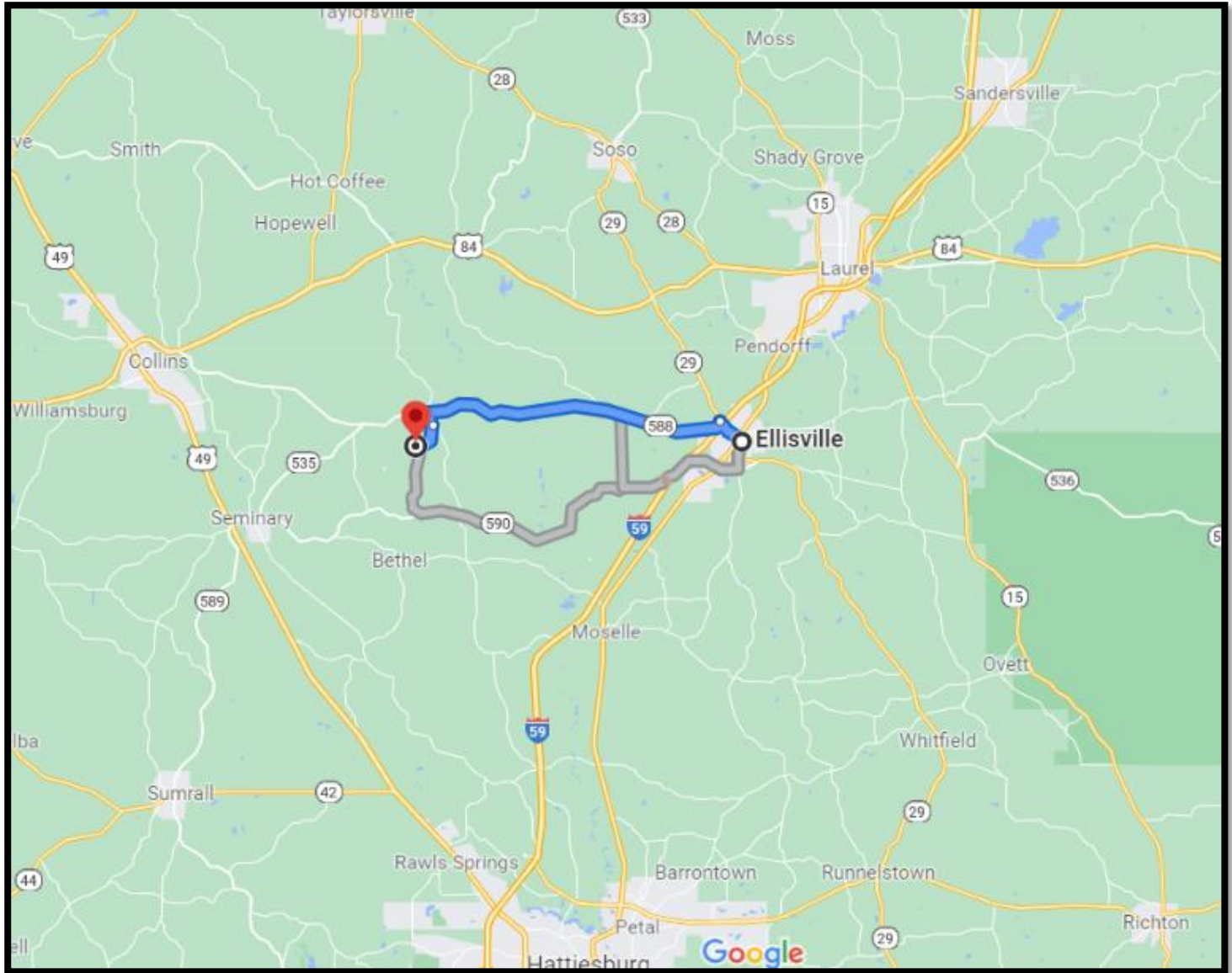


**TomSmithLandandHomes.com**

Information is believed to be accurate but not guaranteed.



# Directional Map



**Directions from I-59 and Hwy 588 in Ellisville, Mississippi:** Travel Hwy 588 west for 11 miles. Turn left onto Monroe Rd and travel for half a mile. Turn right on Earl Brashier Rd and travel for 1 mile. Take another right onto Atwood Rd and the property will be on the right with a Tom Smith Land and Homes sign.



*Call me today!*

**BRETT CARNEY, REALTOR®**

Brett@TomSmithLand.com

662.268.6333 office | 601.710.9633 cell



Expect More. Get More.



**TomSmithLandandHomes.com**

Information is believed to be accurate but not guaranteed.