

100± Acres of Fenced Pasture Land Covington County, MS



If you are looking to get into the cattle business or just looking for an agricultural piece of land, then this 100+/- Acre Covington County, MS tract is for you. It is completely fenced and has cross gates with multiple fields to separate your herd. A spacious pole barn is also in place with plenty of room for all of your equipment. A fresh water stream and a small unstocked pond provide water to the property. Call Brett for your private showing!



Call me today!

BRETT CARNEY, REALTOR®
Brett@TomSmithLand.com
662.268.6333 **office** | 601.710.9633 **cell**



TomSmithLandandHomes.com

Information is believed to be accurate but not guaranteed.



- Fully Fenced and Gated
- Road Frontage on MS-588
- Fresh Water Stream



- Grazeable Pasture Land
- Small Pond
- Equipment Barn



BRETT CARNEY, REALTOR®
 Brett@TomSmithLand.com
 662.268.6333 **office** | 601.710.9633 **cell**

Tom Smith
LAND AND HOMES
 Expect More. Get More.

TomSmithLandandHomes.com

Information is believed to be accurate but not guaranteed.



BRETT CARNEY, REALTOR®
 Brett@TomSmithLand.com
 662.268.6333 **office** | 601.710.9633 **cell**



TomSmithLandandHomes.com

Information is believed to be accurate but not guaranteed.



BRETT CARNEY, REALTOR®

Brett@TomSmithLand.com

662.268.6333 **office** | 601.710.9633 **cell**

Tom Smith
LAND AND HOMES

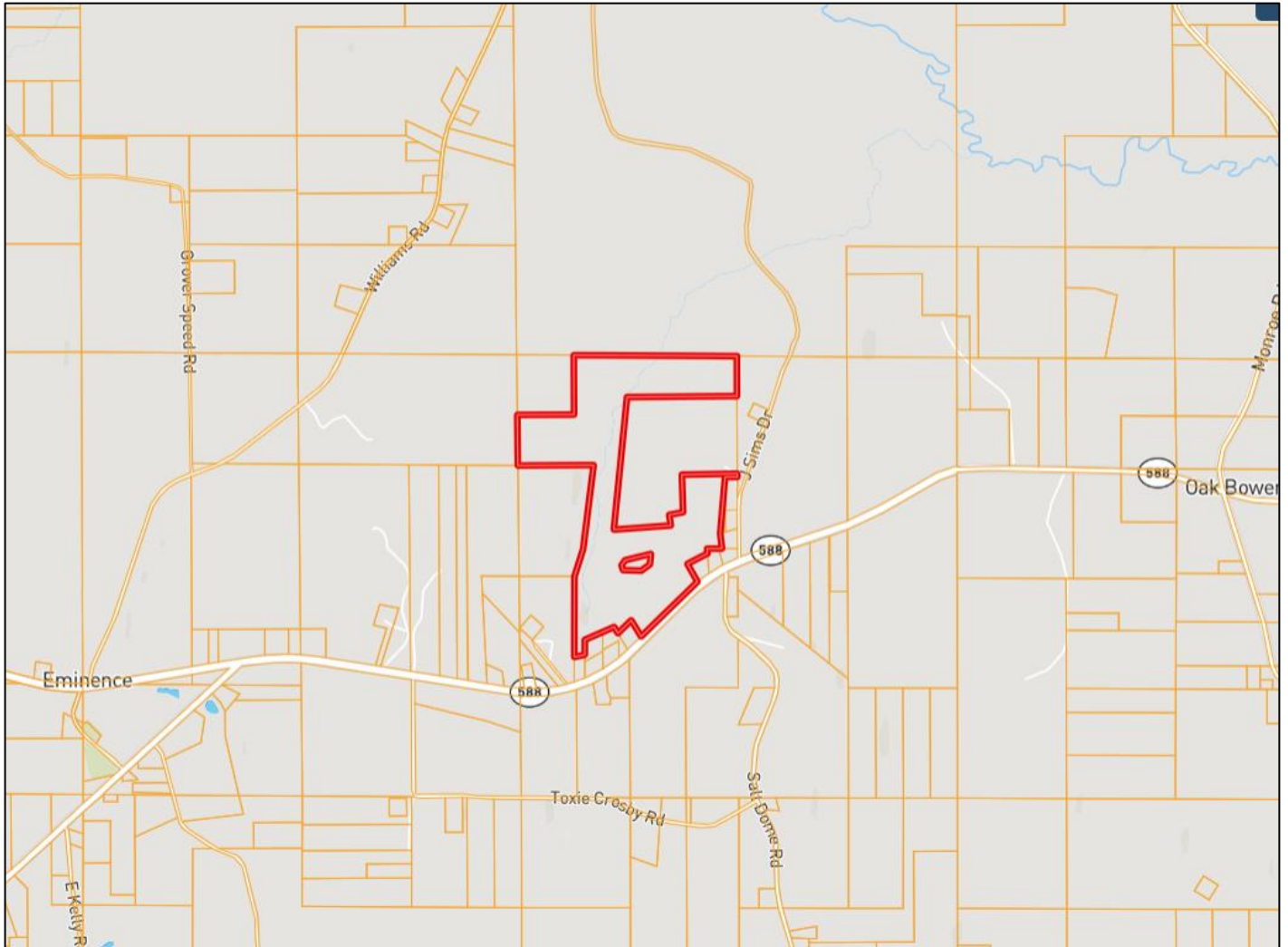
Expect More. Get More.

TomSmithLandandHomes.com

Information is believed to be accurate but not guaranteed.



Ownership Map



BRETT CARNEY, REALTOR®

Brett@TomSmithLand.com

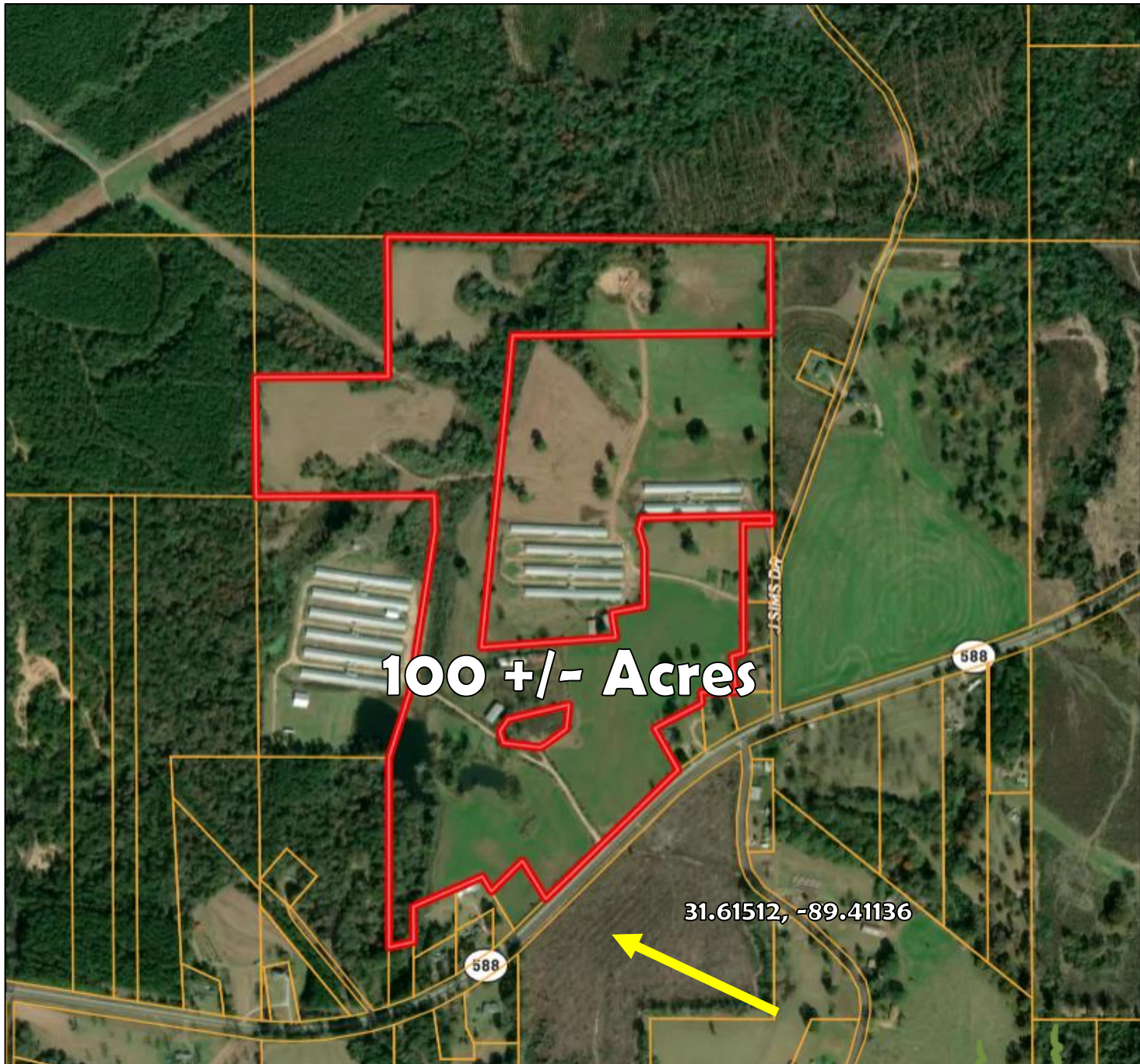
662.268.6333 **office** | 601.710.9633 **cell**

TomSmithLandandHomes.com

Information is believed to be accurate but not guaranteed.



Aerial Map



100 +/- Acres

31.61512, -89.41136



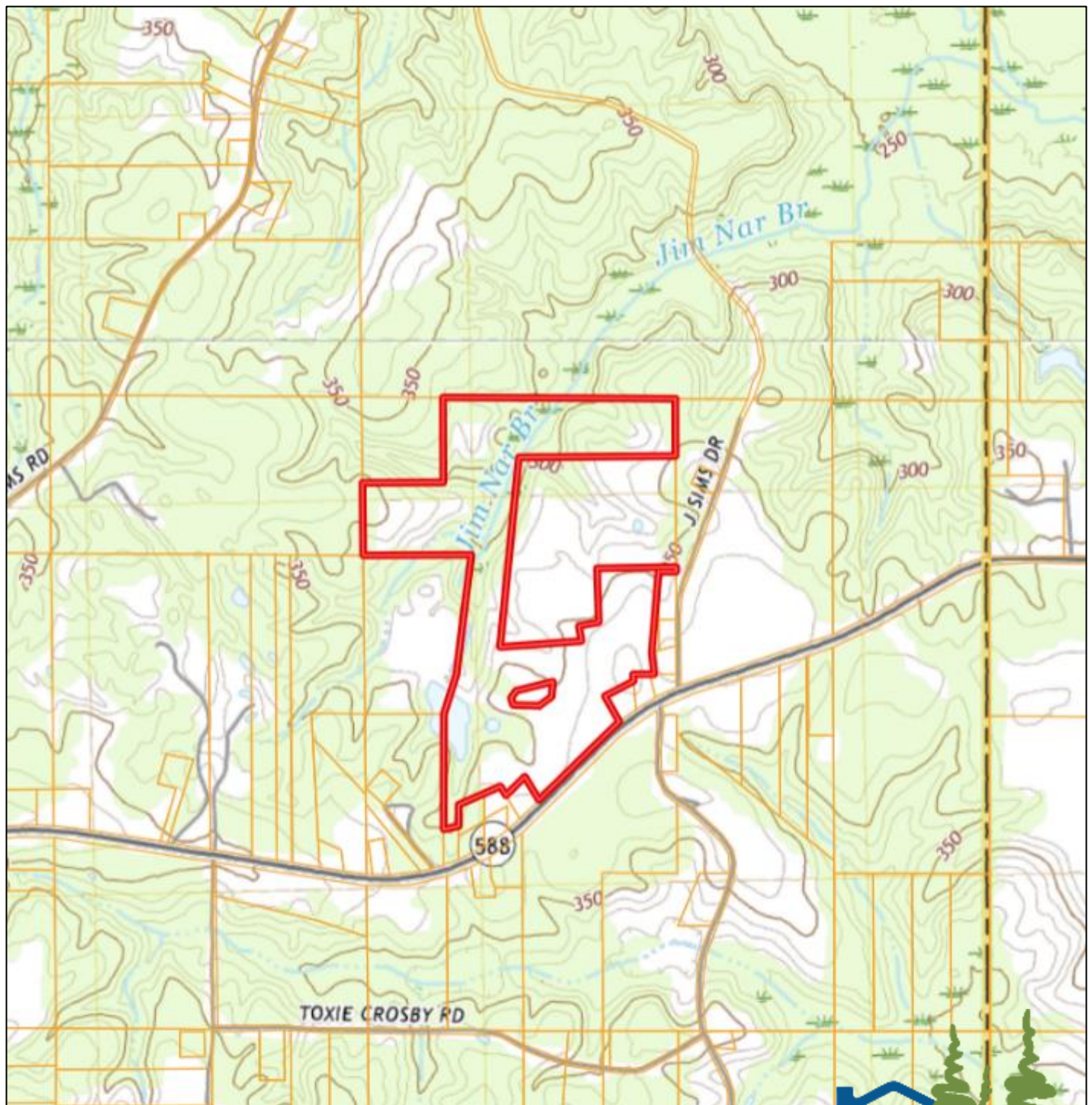
BRETT CARNEY, REALTOR®
Brett@TomSmithLand.com
662.268.6333 **office** | 601.710.9633 **cell**



TomSmithLandandHomes.com

Information is believed to be accurate but not guaranteed.

Topo Map



BRETT CARNEY, REALTOR®

Brett@TomSmithLand.com

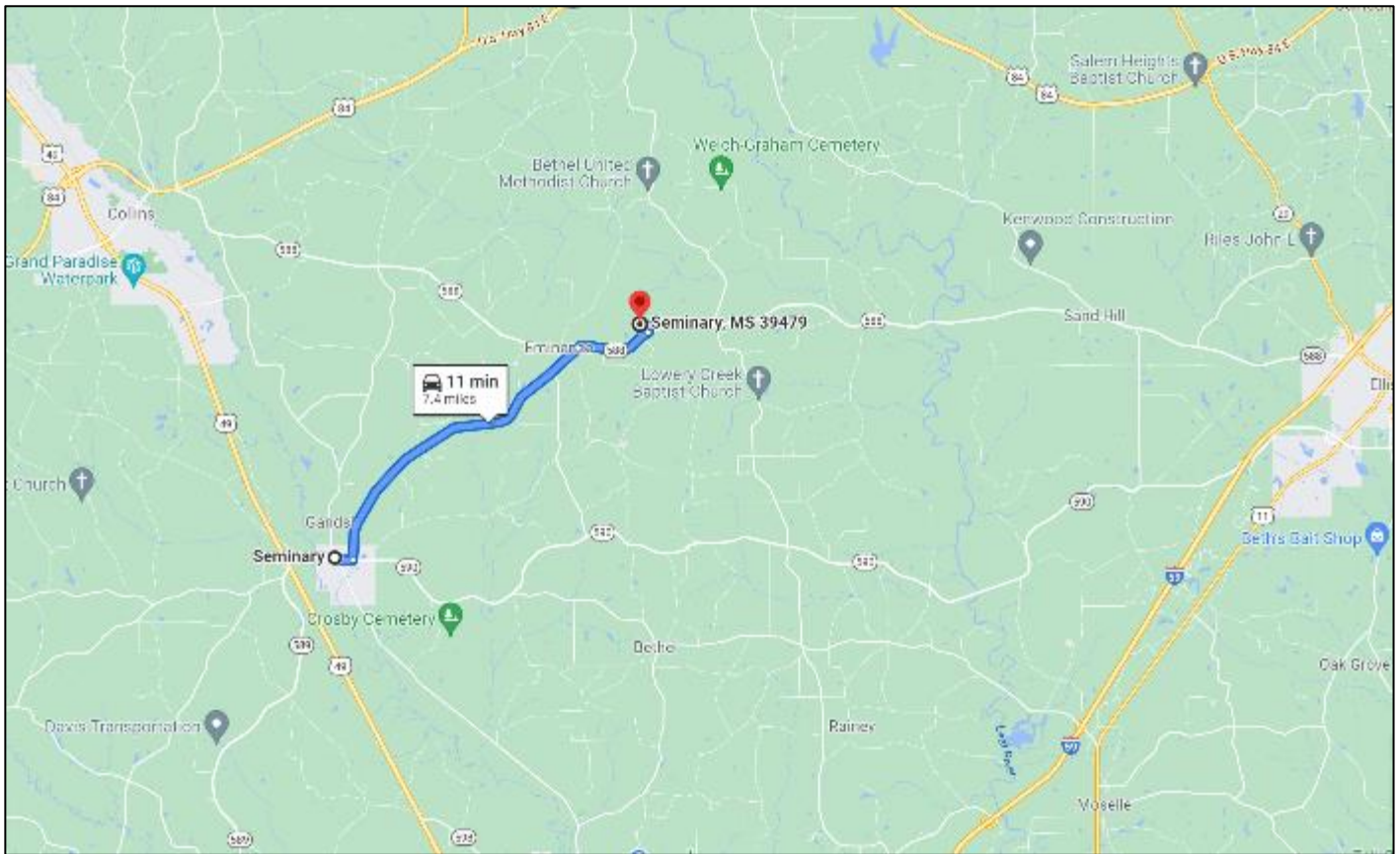
662.268.6333 **office** | 601.710.9633 **cell**

TomSmithLandandHomes.com

Information is believed to be accurate but not guaranteed.



Directional Map



Directions from the Intersection of Old Hwy 49 and MS-535 in Seminary, MS: Travel northeast onto MS-535 for 5.5 miles. Turn onto MS-588 and travel 1 mile. The property will be on the left with a Tom Smith Land and Homes sign. [GOOGLE MAP LINK](#)



Call me today!

BRETT CARNEY, REALTOR®
Brett@TomSmithLand.com
662.268.6333 **office** | 601.710.9633 **cell**



TomSmithLandandHomes.com

Information is believed to be accurate but not guaranteed.