

14.2± ACRES OF EXCELLENT HUNTING IN RANKIN COUNTY, MS



\$95,000

Excellent 14.2± secluded acres in Rankin County, MS. The property has an established homesite with utilities available. The property has a great stand of mature hardwood timber and features the beautiful Steen Creek that cuts through in the north half of the property. The seclusion of the property provides good deer hunting while being conveniently located to Florence, MS. Located just 30 minutes from Jackson, MS, and 10 minutes from I-55. Located in the McLaurin School District and with its private drive, this property is nicely tucked away while still close to amenities. Call Preston Smith for a showing today!

Directions from Florence, MS: Travel west on US-49S for 5.7 miles, turn left onto Muse Rd, travel .9 miles and turn right to stay on Muse Rd, in 246 feet continue onto N Star Rd, travel 1.8 miles and the property will be on the left.



Call me today!

PRESTON SMITH, MANAGING BROKER
Preston@TomSmithLand.com
601.990.5070 office | 601.209.7150 cell



TomSmithLandandHomes.com

Information is believed to be accurate but not guaranteed.



Call me today!

PRESTON SMITH, MANAGING BROKER
Preston@TomSmithLand.com
601.990.5070 office | 601.209.7150 cell



TomSmithLandandHomes.com

Information is believed to be accurate but not guaranteed.



Call me today!

PRESTON SMITH, MANAGING BROKER
Preston@TomSmithLand.com
601.990.5070 office | 601.209.7150 cell



TomSmithLandandHomes.com

Information is believed to be accurate but not guaranteed.

Aerial Map



Call me today!

PRESTON SMITH, MANAGING BROKER
Preston@TomSmithLand.com
601.990.5070 office | 601.209.7150 cell



TomSmithLandandHomes.com

Information is believed to be accurate but not guaranteed.

Ownership Map



Call me today!

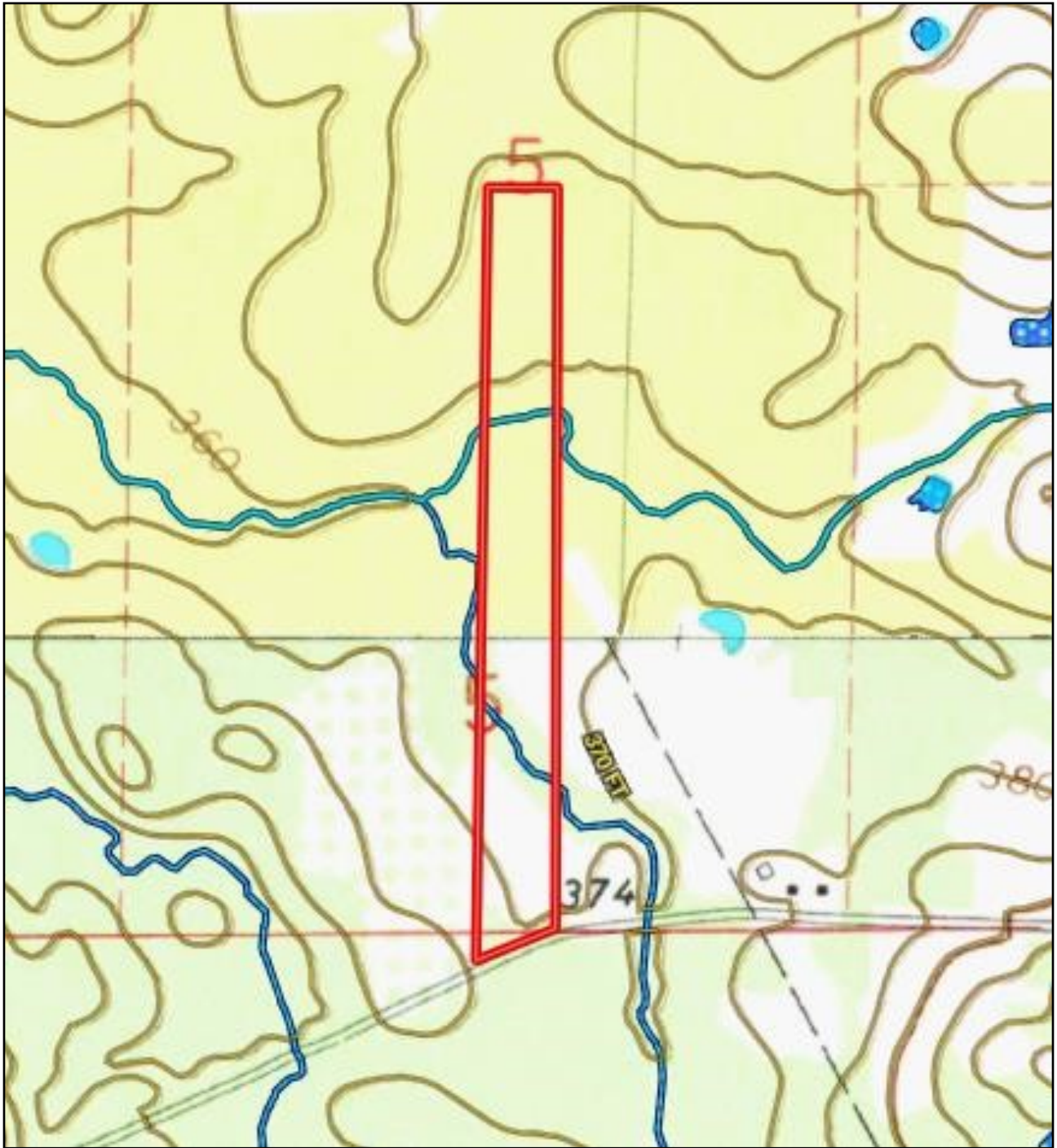
PRESTON SMITH, MANAGING BROKER
Preston@TomSmithLand.com
601.990.5070 office | 601.209.7150 cell



TomSmithLandandHomes.com

Information is believed to be accurate but not guaranteed.

Topography Map



Call me today!

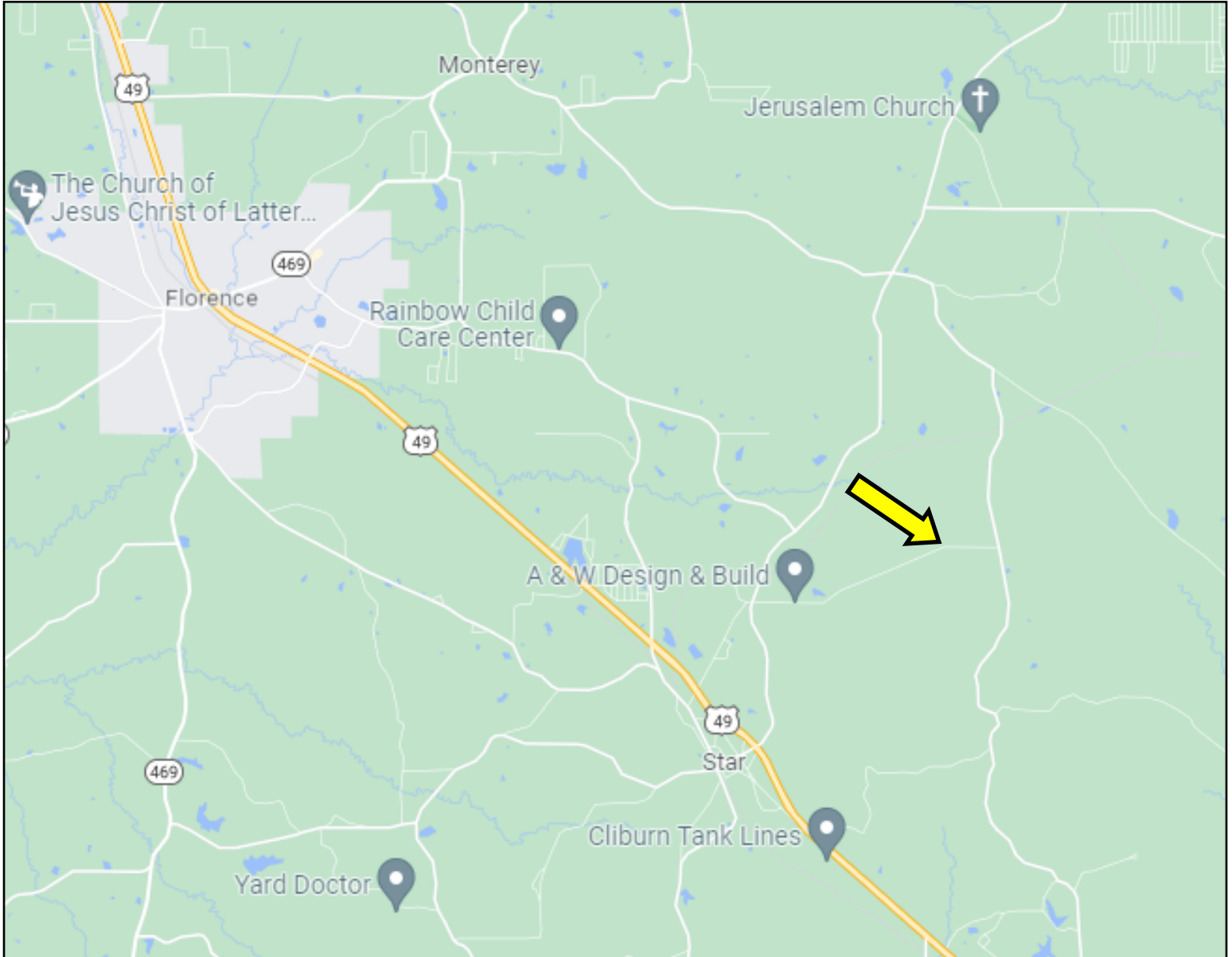
PRESTON SMITH, MANAGING BROKER
Preston@TomSmithLand.com
601.990.5070 office | 601.209.7150 cell



TomSmithLandandHomes.com

Information is believed to be accurate but not guaranteed.

Directional Map



Directions from Florence, MS: Travel west on US-49S for 5.7 miles, turn left onto Muse Rd, travel .9 miles and turn right to stay on Muse Rd, in 246 feet continue onto N Star Rd, travel 1.8 miles and the property will be on the left.



Call me today!

PRESTON SMITH, MANAGING BROKER
Preston@TomSmithLand.com
601.990.5070 office | 601.209.7150 cell



TomSmithLandandHomes.com

Information is believed to be accurate but not guaranteed.