

10+/- ACRE COMMERCIAL SITE LINCOLN COUNTY, MS



Directions from the intersection of US-84 and US-51 in Brookhaven, MS: Turn left onto US-51 N. Travel 1.7 miles. Turn left onto Mullen Dr. Travel 600 feet. Property is at the dead end.

\$199,000

This is a rare opportunity to own a prime piece of commercial property in Brookhaven, MS. This 10+/- acre tract on Mullens Drive, right off Hwy 51, in Lincoln County, offers enough room to build any business you could imagine. The property offers visibility to some of the highest traffic counts in Brookhaven and is surrounded by other established businesses. This is a blank canvas with tons of opportunity. The current owner did some of the legwork to see what it would take to break this property into smaller commercial lots. A copy of that information is available upon request. Take advantage of this opportunity to own a great commercial property. Call Eli today to schedule a private viewing!



call me today!

ELI FERGUSON, REALTOR®

Eli@TomSmithLand.com

601.990.5070 **office** | 601.757.7117 **cell**

128 W. Monticello | Brookhaven, MS 39601



Expect More. Get More.

TomSmithLandandHomes.com

Information is believed to be accurate but not guaranteed.



ELI FERGUSON, REALTOR®
 Eli@TomSmithLand.com
 601.990.5070 office | 601.757.7117 cell
 128 W. Monticello | Brookhaven, MS 39601



TomSmithLandandHomes.com

Information is believed to be accurate but not guaranteed.



ELI FERGUSON, REALTOR®
 Eli@TomSmithLand.com
 601.990.5070 office | 601.757.7117 cell
 128 W. Monticello | Brookhaven, MS 39601



TomSmithLandandHomes.com

Information is believed to be accurate but not guaranteed.



Aerial Map

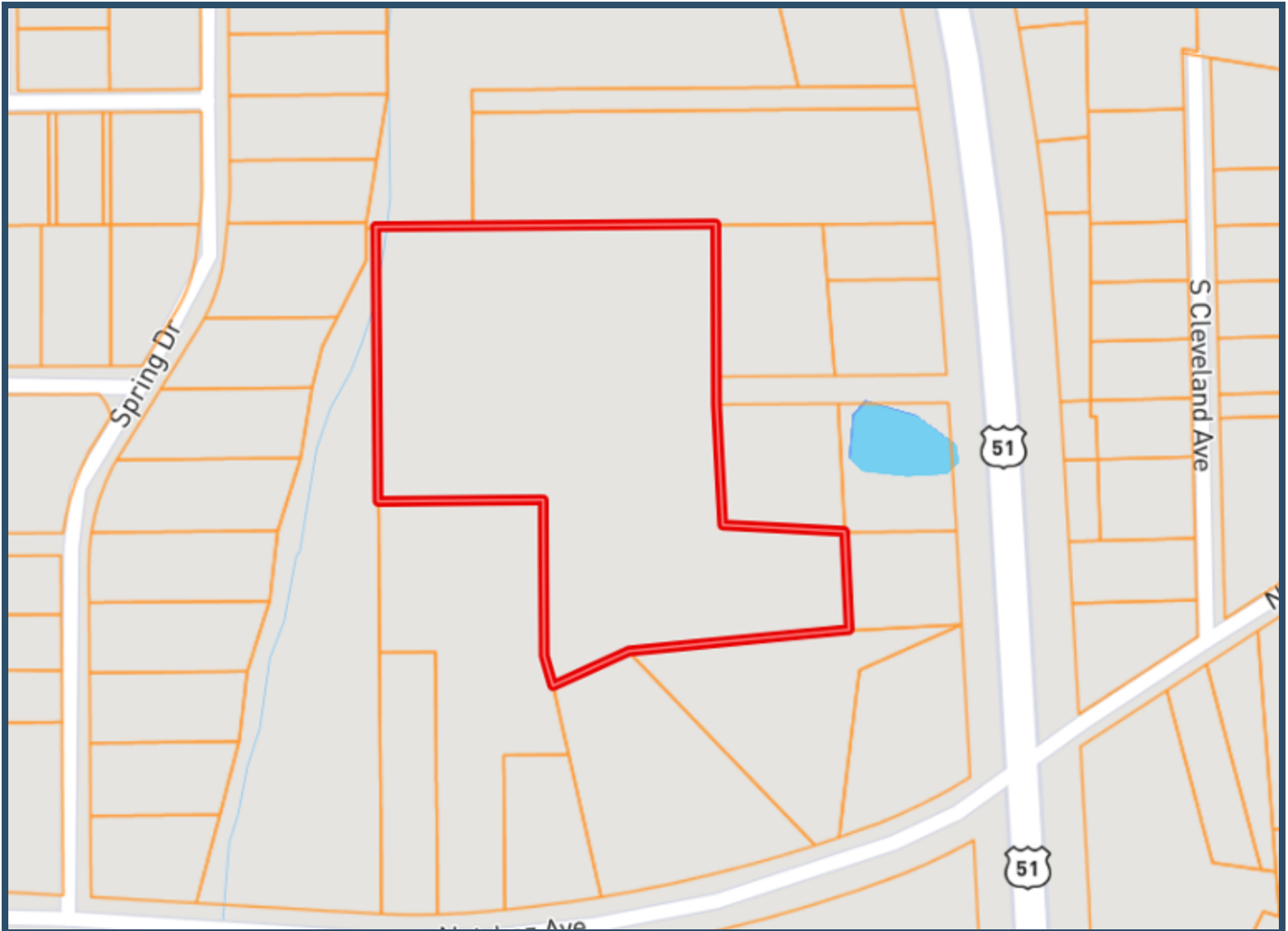


ELI FERGUSON, REALTOR®
Eli@TomSmithLand.com
601.990.5070 office | 601.757.7117 cell
128 W. Monticello | Brookhaven, MS 39601



TomSmithLandandHomes.com

Information is believed to be accurate but not guaranteed.



Ownership Map



ELI FERGUSON, REALTOR®
Eli@TomSmithLand.com
601.990.5070 office | 601.757.7117 cell
128 W. Monticello | Brookhaven, MS 39601



TomSmithLandandHomes.com

Information is believed to be accurate but not guaranteed.



Flood Map

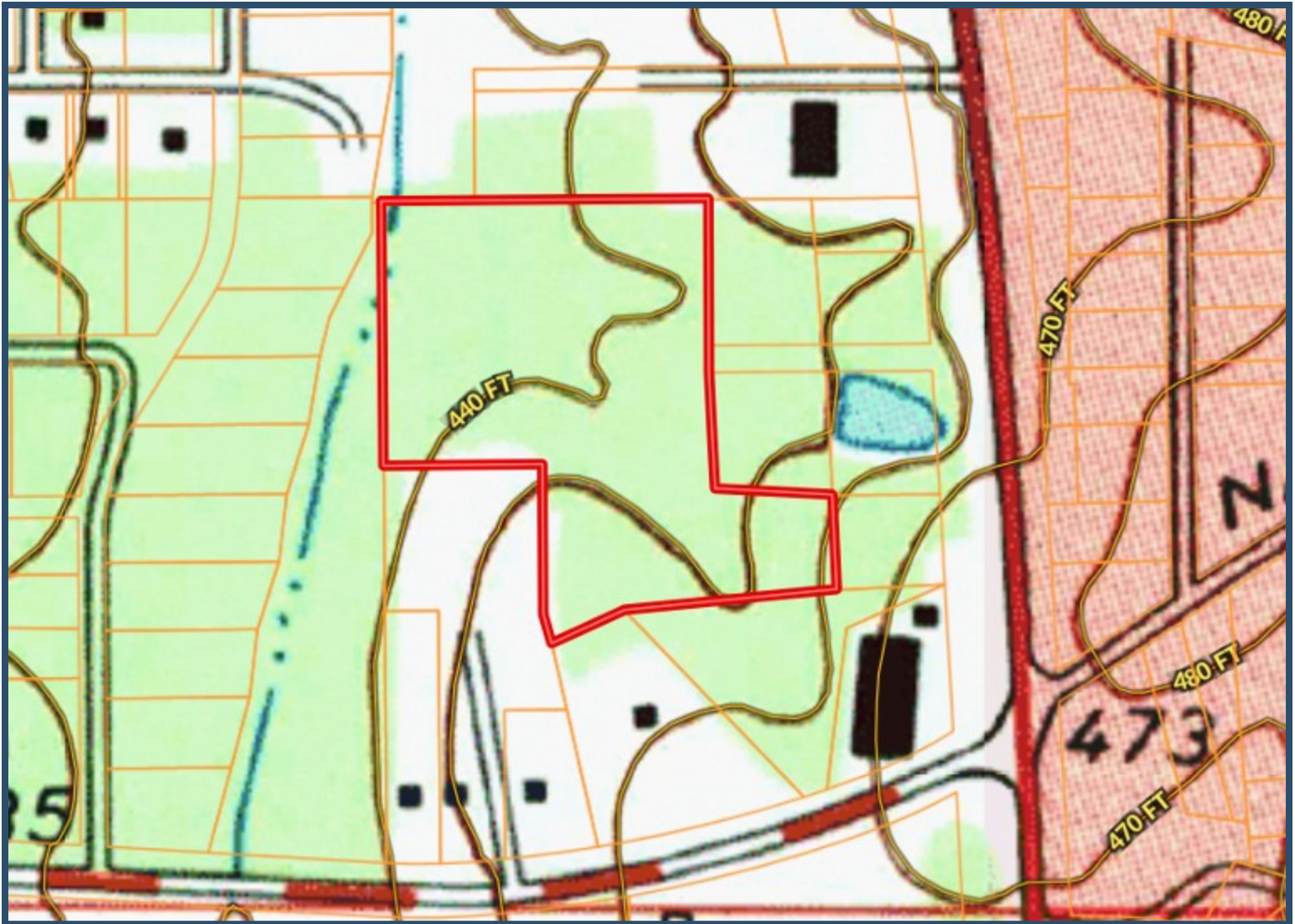


ELI FERGUSON, REALTOR®
 Eli@TomSmithLand.com
 601.990.5070 office | 601.757.7117 cell
 128 W. Monticello | Brookhaven, MS 39601



TomSmithLandandHomes.com

Information is believed to be accurate but not guaranteed.



Topo Map

ELI FERGUSON, REALTOR®

Eli@TomSmithLand.com

601.990.5070 office | 601.757.7117 cell

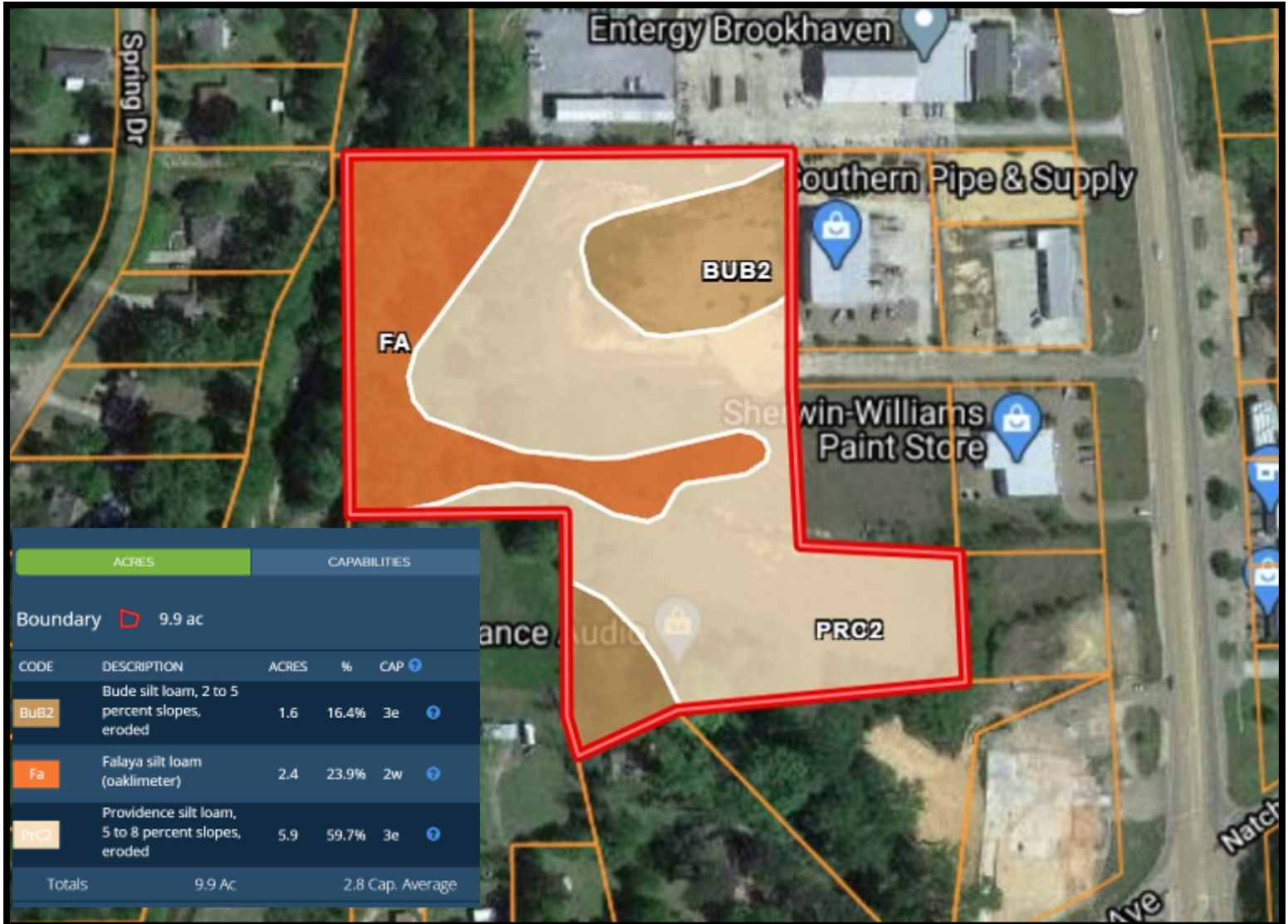
128 W. Monticello | Brookhaven, MS 39601



Expect More. Get More.

TomSmithLandandHomes.com

Information is believed to be accurate but not guaranteed.



Soil Map



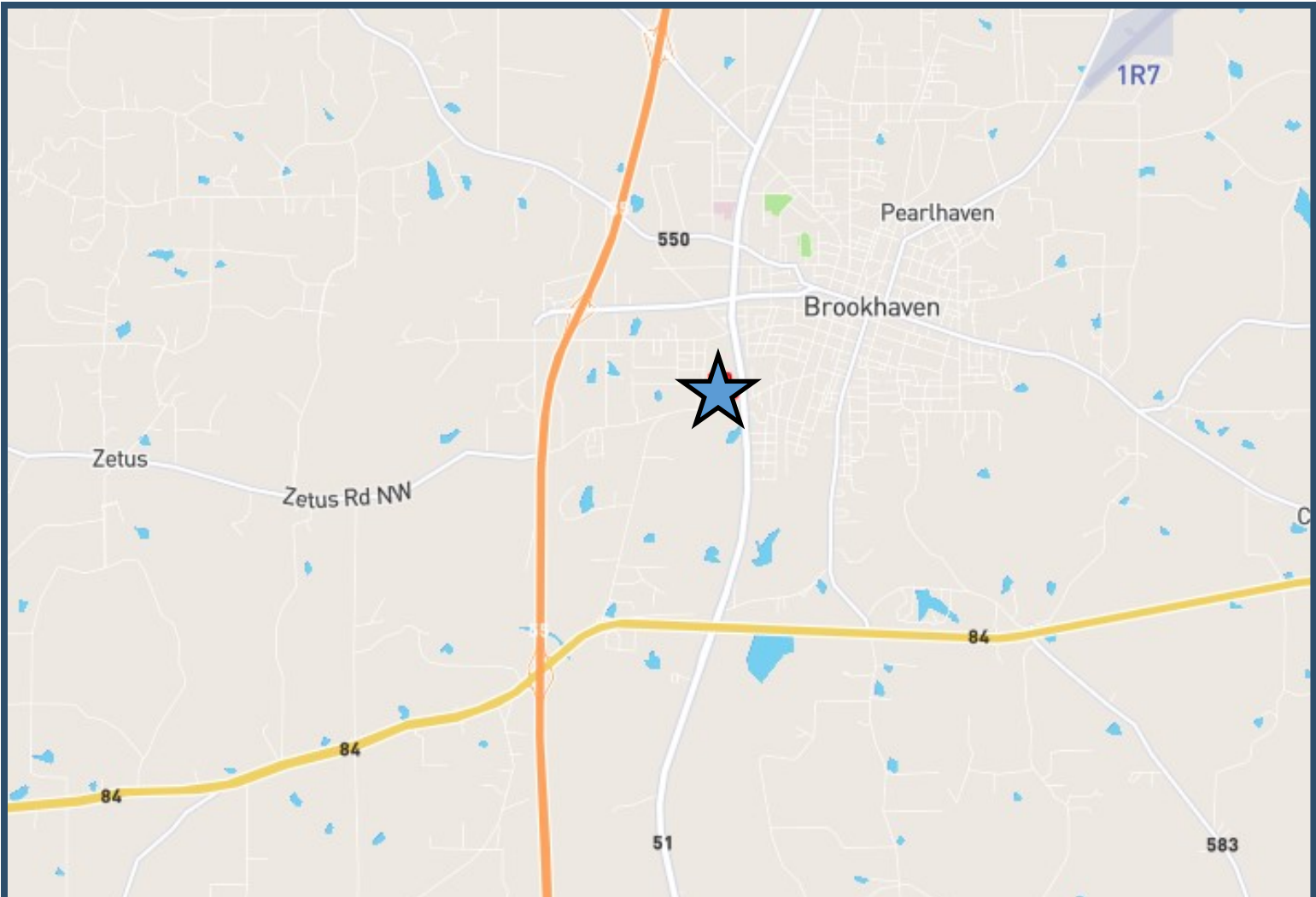
ELI FERGUSON, REALTOR®
 Eli@TomSmithLand.com
 601.990.5070 office | 601.757.7117 cell
 128 W. Monticello | Brookhaven, MS 39601



Expect More. Get More.

TomSmithLandandHomes.com

Information is believed to be accurate but not guaranteed.



Directional Map

Directions from the intersection of US-84 and US-51 in Brookhaven, MS:
Turn left onto US-51 N. Travel 1.7 miles. Turn left onto Mullen Dr. Travel 600 feet. Property is at the dead end.



ELI FERGUSON, REALTOR®
Eli@TomSmithLand.com
601.990.5070 office | 601.757.7117 cell
128 W. Monticello | Brookhaven, MS 39601



TomSmithLandandHomes.com

Information is believed to be accurate but not guaranteed.