

Home on Versatile 40+/- Acres Copiah County, MS



3071 Hwy 51N Wesson MS, 39191

Are you looking for a home with plenty of land for recreation? This 40+/- Acres in Copiah County is located in the highly desired Wesson School District. It features a beautiful three bedroom, two bath brick home nestled on a hill with a backyard that appears to stretch for miles. The exterior features a two car carport and a large screened-in porch with a hot tub. The custom cabinetry in the kitchen provides ample storage and is perfectly accompanied with granite countertops. The large dining area is perfectly situated between the rear porch and living room making this space ideal for entertaining. The spacious living room is sure to be perfect for a family of most any size. The sizeable main suite is sure to impress with his and her walk in closets, double vanities, and jetted tub. All interior walls are insulated, reducing noise to near zero. This diverse tract has Dye Creek traversing the property and offers a large agricultural field behind the home, pine ridges, hardwood bottoms, and food plots ready for hunting. Multiple Copiah County trophy whitetails call this place home.

Call Blake Sasser to view this property today!

Directions: From I55 Exit 51, Wesson, MS: Turn right onto Sylvarena Rd traveling for 3.8 miles. Turn left onto US-51 N and the destination will be on the left in 0.7 miles.

Address: 3071 Hwy 51N Wesson, MS 39191



call me today!

BLAKE SASSER, REALTOR®
Blake@TomSmithLand.com
601.990.5070 office | 601-757-5027 cell
Licensed in MS and LA



TomSmithLandandHomes.com

Information is believed to be accurate but not guaranteed.



LandReport
2010-2021
AMERICA'S
BEST
BROKERAGES

Call me today!

BLAKE SASSER, REALTOR®

Blake@TomSmithLand.com

601.990.5070 office | 601-757-5027 cell

Licensed in MS and LA



Expect More. Get More.

TomSmithLandandHomes.com

Information is believed to be accurate but not guaranteed.



Call me today!

BLAKE SASSER, REALTOR®
Blake@TomSmithLand.com
601.990.5070 office | 601-757-5027 cell
Licensed in MS and LA



TomSmithLandandHomes.com

Information is believed to be accurate but not guaranteed.



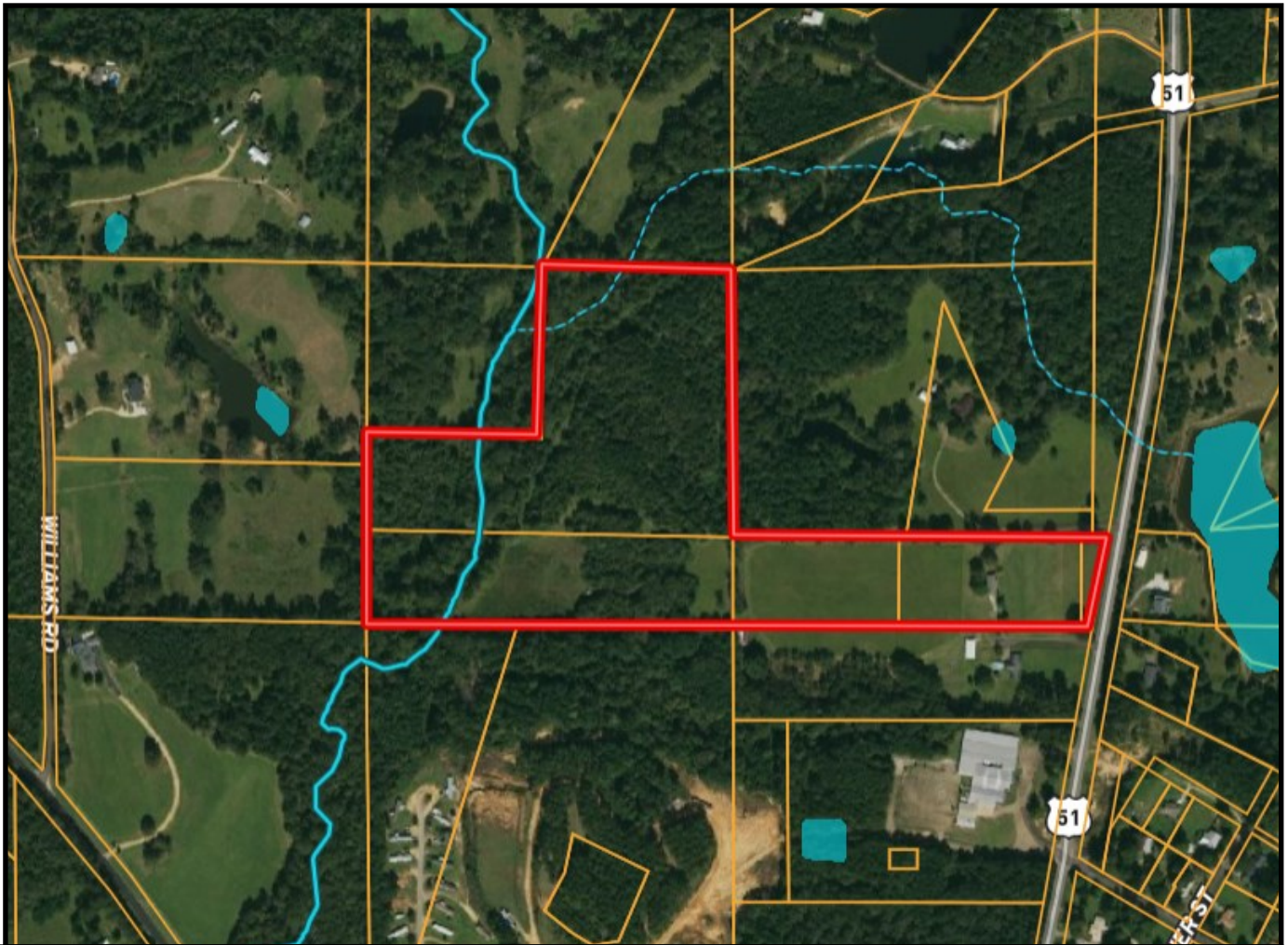
Call me today!

BLAKE SASSER, REALTOR®
Blake@TomSmithLand.com
601.990.5070 office | 601-757-5027 cell
Licensed in MS and LA



TomSmithLandandHomes.com

Information is believed to be accurate but not guaranteed.



Map of Water Features



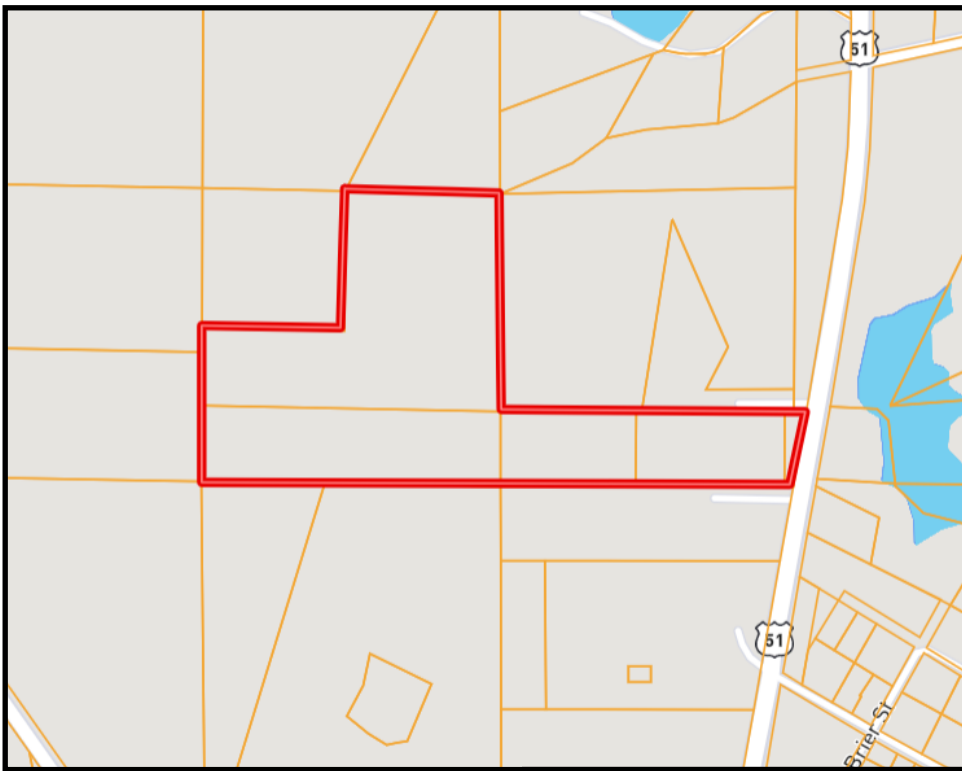
Call me today!

BLAKE SASSER, REALTOR®
Blake@TomSmithLand.com
601.990.5070 office | 601-757-5027 cell
Licensed in MS and LA

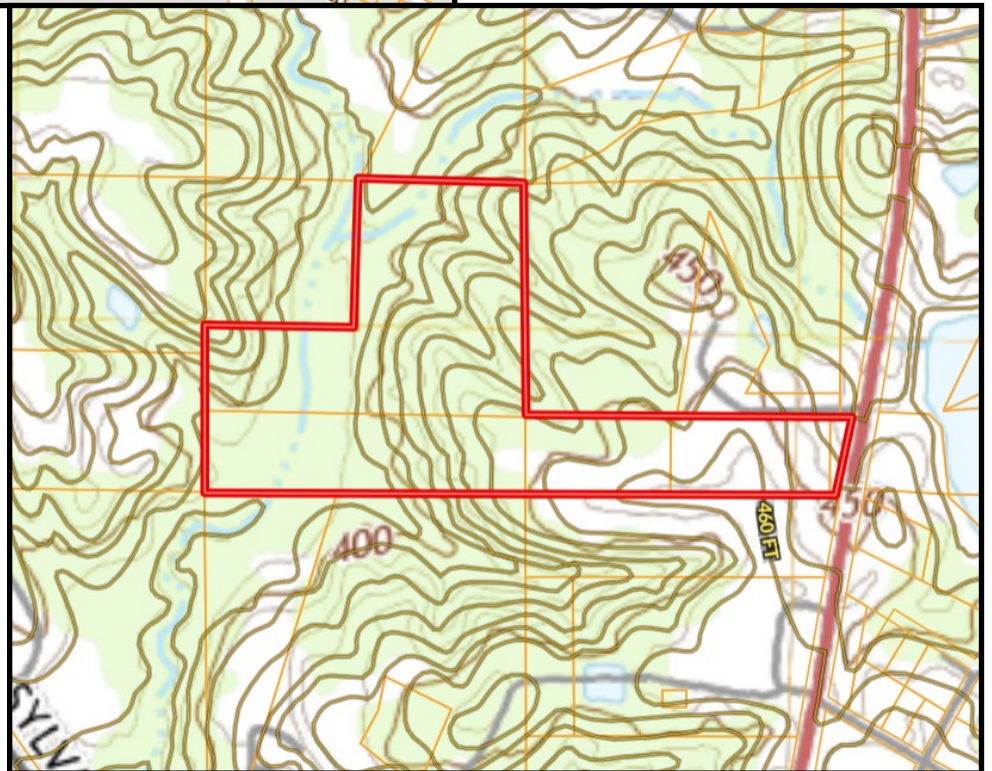


TomSmithLandandHomes.com

Information is believed to be accurate but not guaranteed.



Ownership
Map



Topography
Map



Call me today!

BLAKE SASSER, REALTOR®

Blake@TomSmithLand.com

601.990.5070 office | 601-757-5027 cell

Licensed in MS and LA

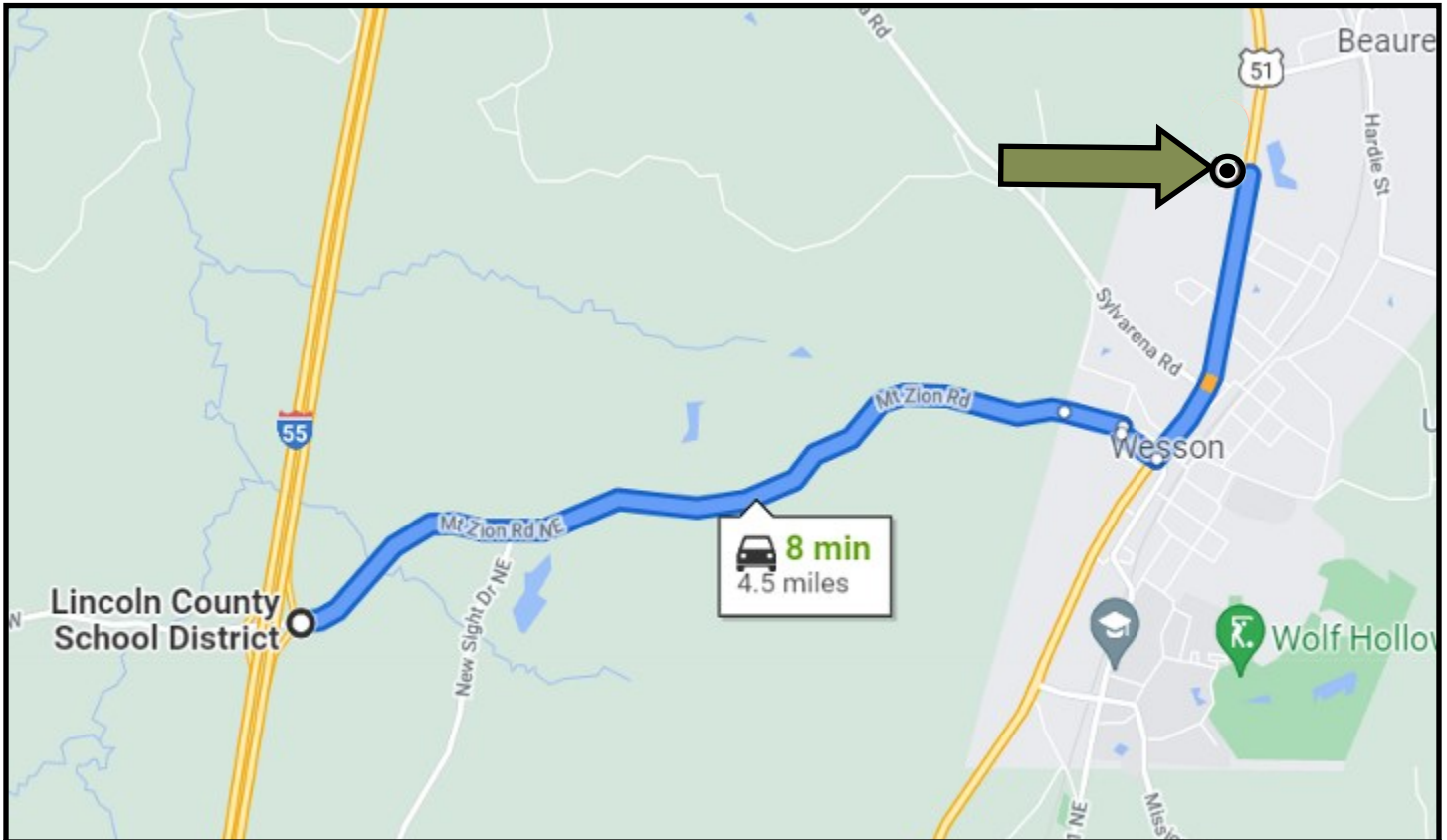


Expect More. Get More.



TomSmithLandandHomes.com

Information is believed to be accurate but not guaranteed.



Directional Map

Directions: From I55 Exit 51, Wesson, MS: Turn right onto Sylvarena Rd traveling for 3.8 miles. Turn left onto US-51 N and the destination will be on the left in 0.7 miles.

Address: 3071 Hwy 51N Wesson, MS 39191



call me today!

BLAKE SASSER, REALTOR®

Blake@TomSmithLand.com

601.990.5070 office | 601-757-5027 cell

Licensed in MS and LA



Expect More. Get More.

TomSmithLandandHomes.com

Information is believed to be accurate but not guaranteed.