

# 90± ACRES OF EXCELLENT PASTURE LAND IN LEAKE COUNTY, MS



**\$243,000**



90± ACRES OF EXCELLENT PASTURE LAND IN LEAKE COUNTY, MS! This property features plenty of open space and great for cattle or horses. Plenty of deer and turkey signs throughout the land, and with a rustic old barn and an old three bedroom, one bath farm house, this property would also make for a great hunting property! The north side of the property also features Pellaphalia Creek, with a hardwood bottom, that cuts through the property, providing an excellent water source for local fauna. Plenty of space to build a home or equestrian operation. Great road frontage on MS-16 and Robinson Road, providing quick access to Madison, MS, and the surrounding Metro area. This property is on Leake County and Madison County border, and approximately 40 minutes from Madison, MS.

Directions from the cross roads of MS-43 and MS-16 in Canton, MS: Travel east on E Peace St/MS-16E for approximately 19.1 miles, take a slight left onto Old Robinson Rd, the property will be on the left in .5 miles at 83 Old Robison Rd, Carthage, MS.



*call me today!*

**PRESTON SMITH**, MANAGING BROKER  
Preston@TomSmithLand.com  
601.990.5070 office | 601.209.7150 cell



## TomSmithLandandHomes.com

Information is believed to be accurate but not guaranteed.





*call me today!*

**PRESTON SMITH**, MANAGING BROKER

Preston@TomSmithLand.com

601.990.5070 office | 601.209.7150 cell



Expect More. Get More.

**TomSmithLandandHomes.com**

Information is believed to be accurate but not guaranteed.





*call me today!*

**PRESTON SMITH**, MANAGING BROKER  
Preston@TomSmithLand.com  
601.990.5070 office | 601.209.7150 cell



**TomSmithLandandHomes.com**

Information is believed to be accurate but not guaranteed.



# Aerial Map



*call me today!*

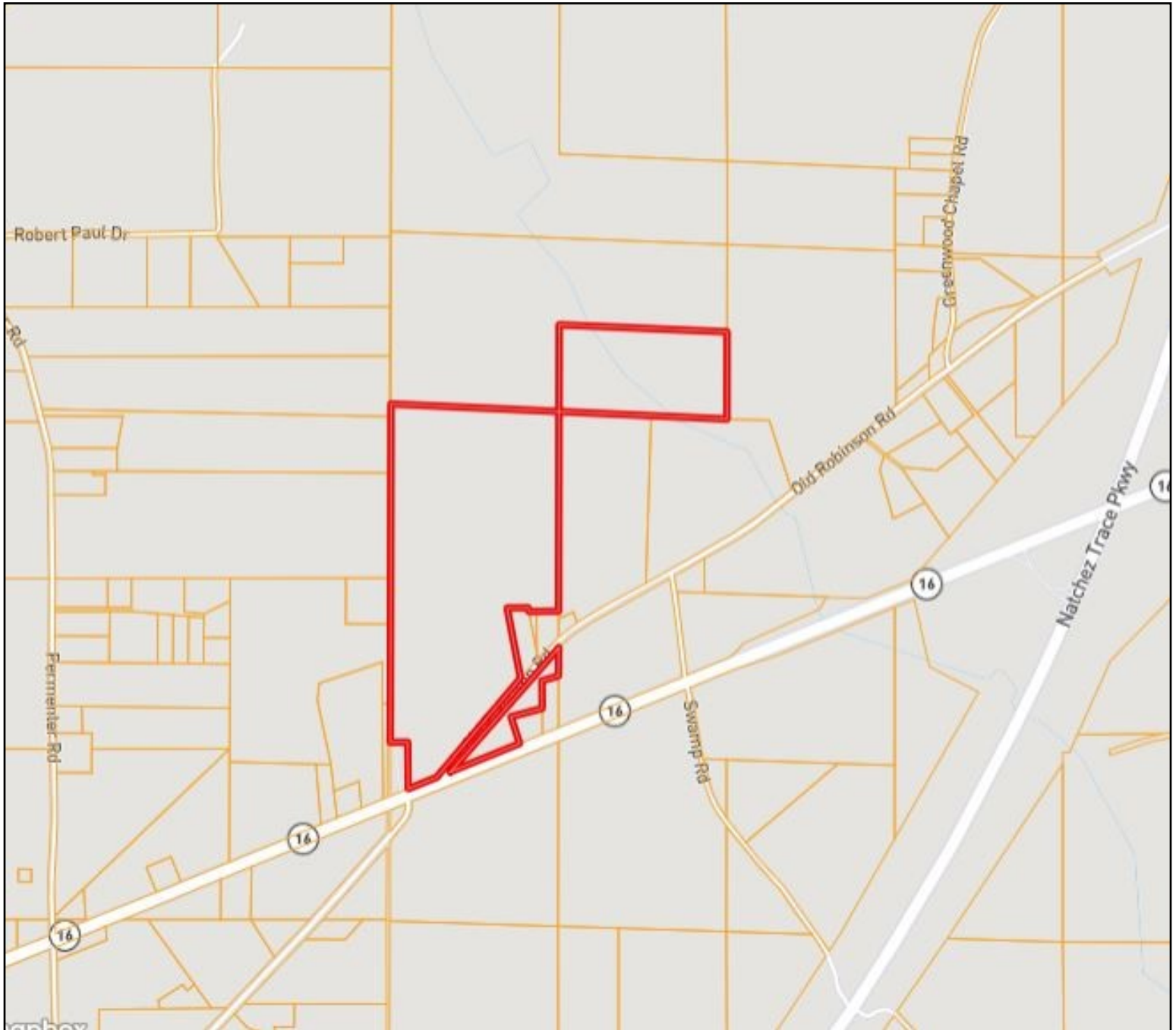
**PRESTON SMITH**, MANAGING BROKER  
Preston@TomSmithLand.com  
601.990.5070 office | 601.209.7150 cell



**TomSmithLandandHomes.com**

Information is believed to be accurate but not guaranteed.

# Ownership Map



*call me today!*

**PRESTON SMITH**, MANAGING BROKER  
Preston@TomSmithLand.com  
601.990.5070 office | 601.209.7150 cell

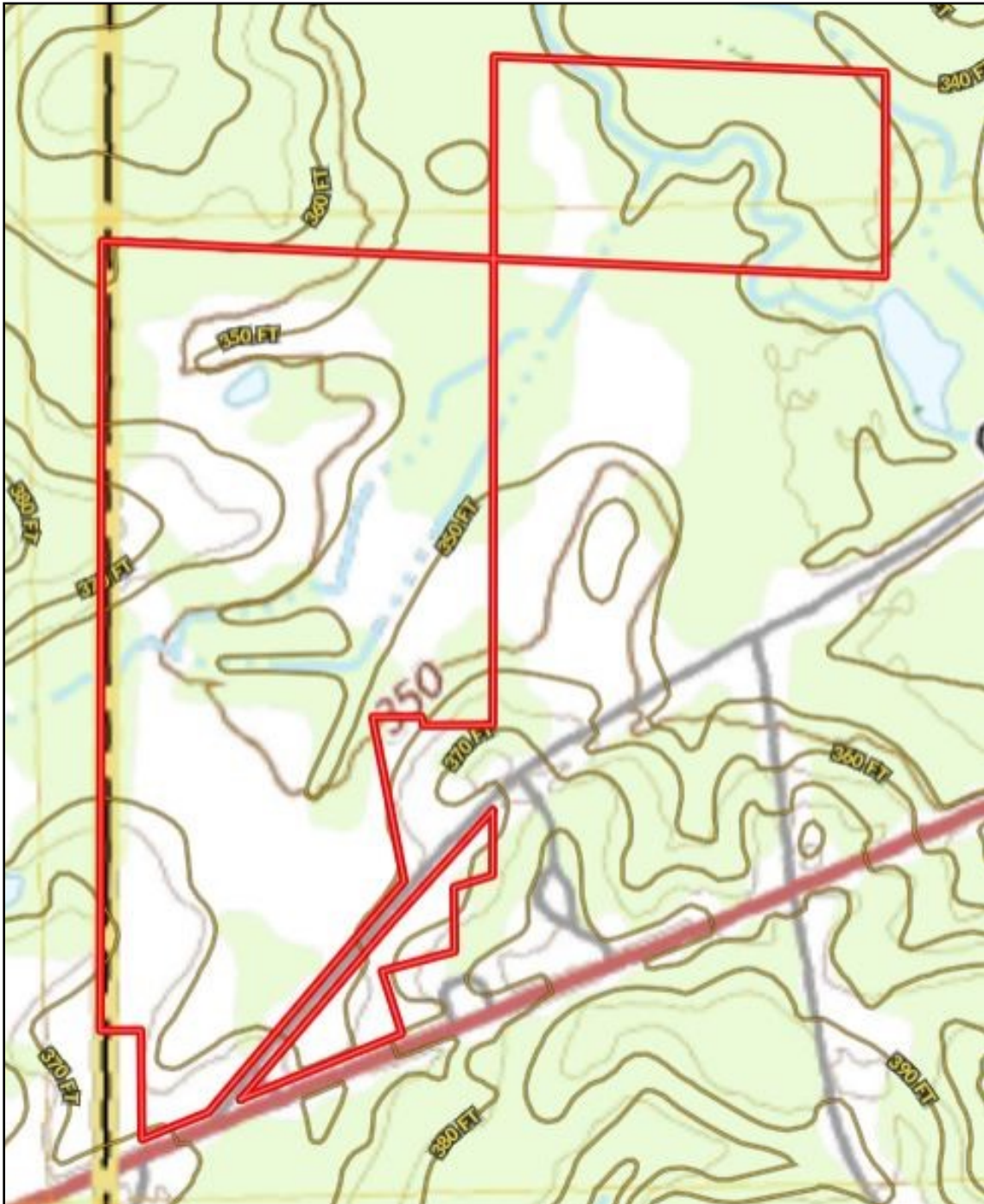


**TomSmithLandandHomes.com**

Information is believed to be accurate but not guaranteed.



# Topography Map



*call me today!*

**PRESTON SMITH**, MANAGING BROKER  
Preston@TomSmithLand.com  
601.990.5070 office | 601.209.7150 cell

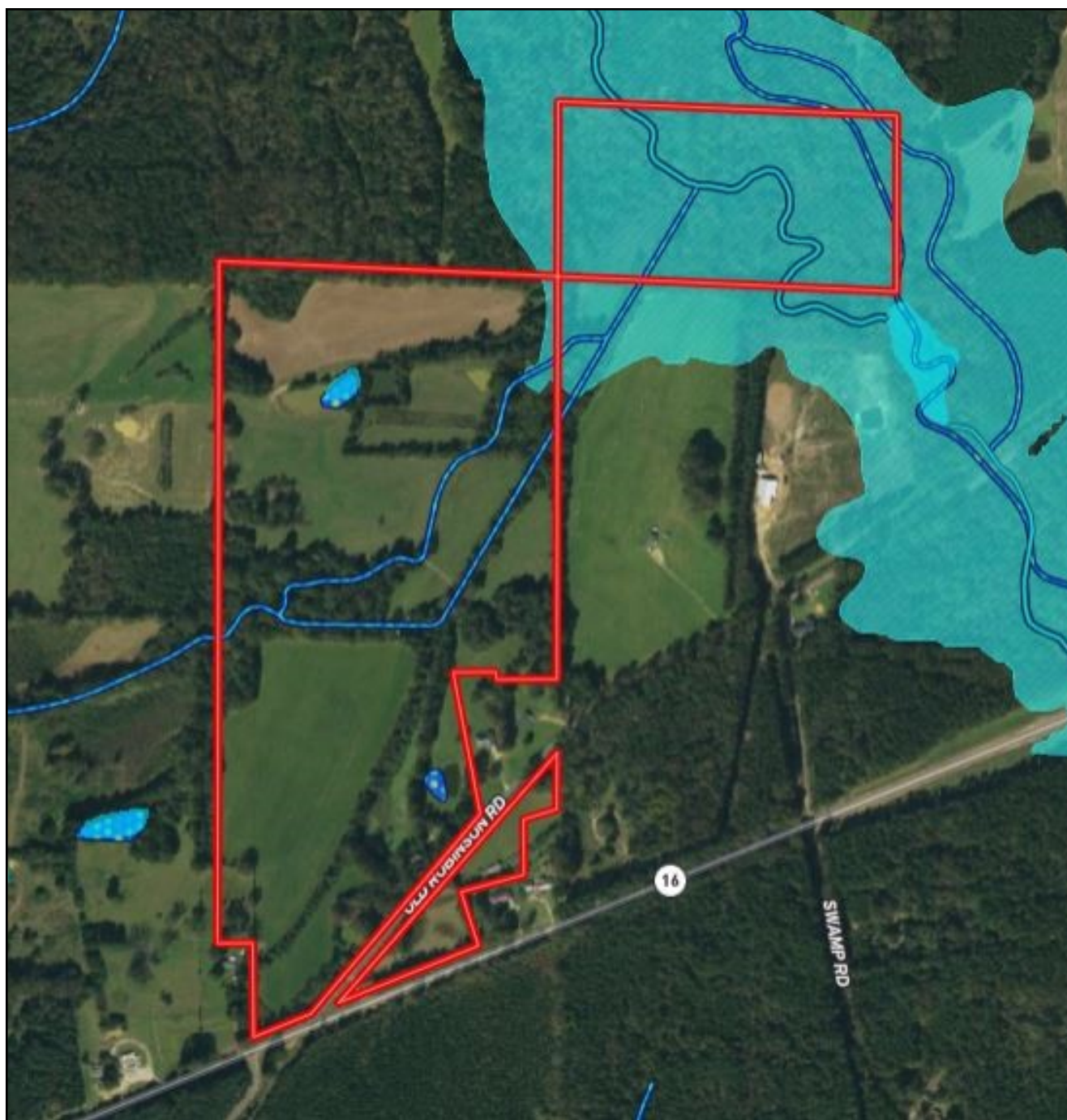


**TomSmithLandandHomes.com**

Information is believed to be accurate but not guaranteed.



# Flood Map



*call me today!*

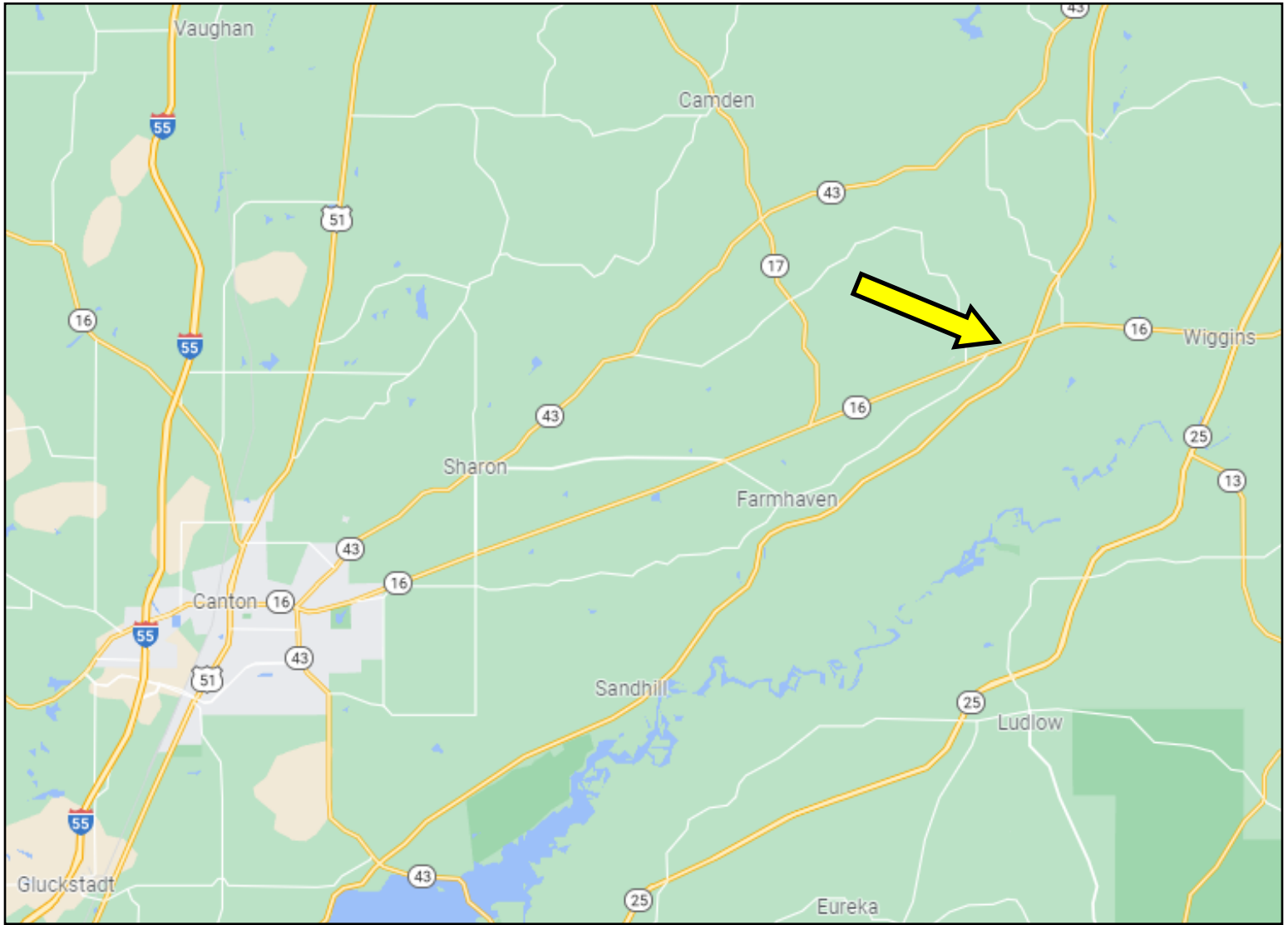
**PRESTON SMITH**, MANAGING BROKER  
Preston@TomSmithLand.com  
601.990.5070 office | 601.209.7150 cell



**TomSmithLandandHomes.com**

Information is believed to be accurate but not guaranteed.

# Directional Map



Directions from the cross roads of MS-43 and MS-16 in Canton, MS: Travel east on E Peace St/MS-16E for approximately 19.1 miles, take a slight left onto Old Robinson Rd, the property will be on the left in .5 miles at 83 Old Robison Rd, Carthage, MS.



*call me today!*

**PRESTON SMITH**, MANAGING BROKER  
Preston@TomSmithLand.com  
601.990.5070 office | 601.209.7150 cell



**TomSmithLandandHomes.com**

Information is believed to be accurate but not guaranteed.