

Lot For Sale on Red Autumn Lane in Brookhaven, MS

Lincoln County, MS



\$10,500

Vacant Lot in Autumn Hills Subdivision. This lot has the conveniences of being located in town but the feel of being in the country. Vacant 1.19± acre lot in a subdivision in Brookhaven is a rare opportunity. This lot is located in a cul-de-sac, so traffic will be minimal. Community water available. Call Eli Ferguson today!!!

Directions from Brookhaven: Travel east on Hwy 84 toward Monticello. At the intersection of Hwy 583 and County Farm Road Turn north on County farm road. Take immediate left onto Greenview Trail. Travel approx. 1/2 mile and Red Autumn Lane will be on the right.



Call me today!

ELI FERGUSON, REALTOR®

Eli@TomSmithLand.com

601.990.5070 office | 601.757.7117 cell



TomSmithLandandHomes.com

Information is believed to be accurate but not guaranteed.



Call me today!

ELI FERGUSON, REALTOR®

Eli@TomSmithLand.com

601.990.5070 office | 601.757.7117 cell



TomSmithLandandHomes.com

Information is believed to be accurate but not guaranteed.

Aerial Map



31.5483

-90.4224



1.19± Acres

FARM LN NE



Call me today!

ELI FERGUSON, REALTOR®

Eli@TomSmithLand.com

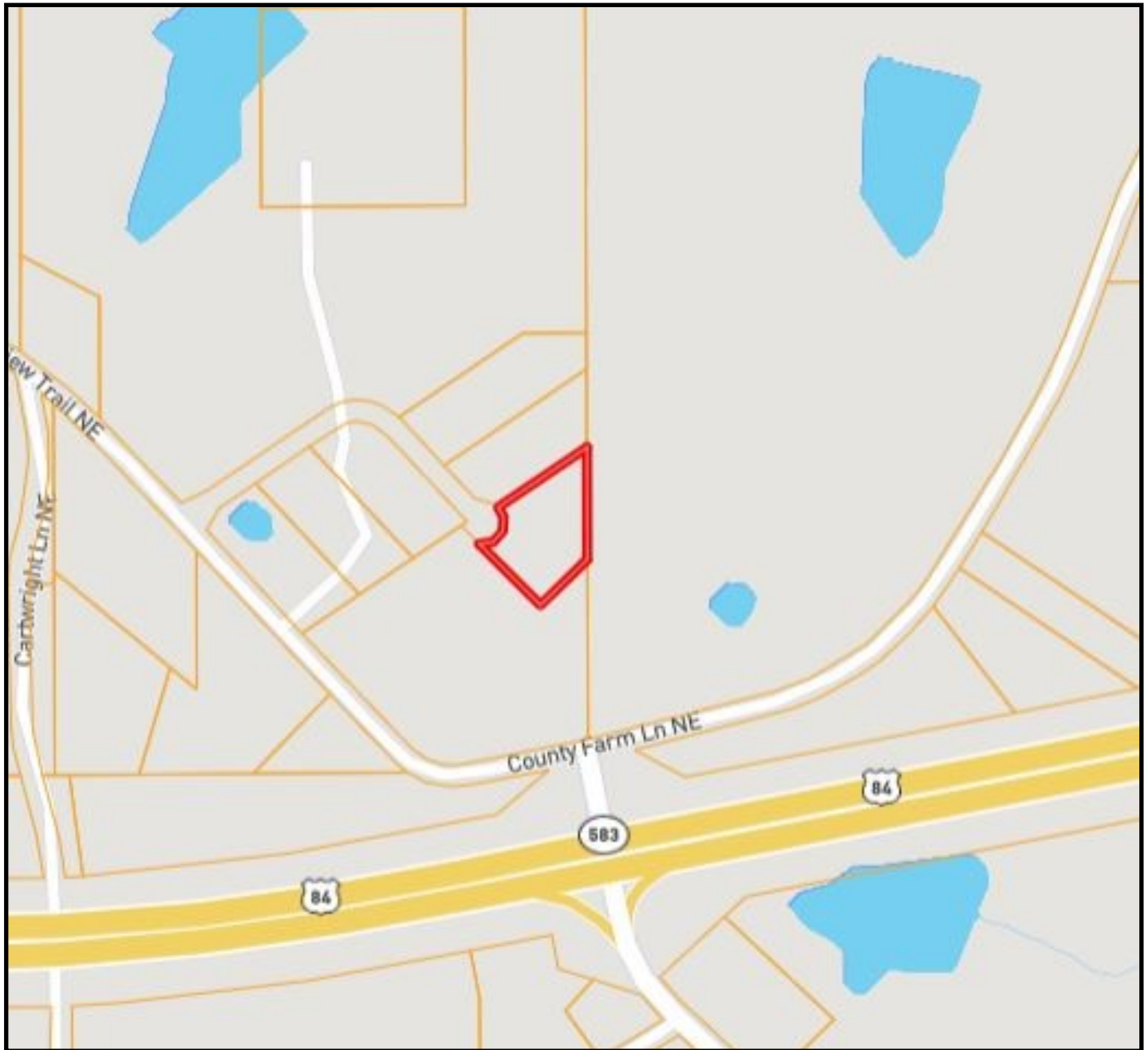
601.990.5070 office | 601.757.7117 cell



TomSmithLandandHomes.com

Information is believed to be accurate but not guaranteed.

Ownership Map



2010-2021
AMERICA'S
BEST
BROKERAGES

Proud to be
C2EX
endorsed!

Call me today!

ELI FERGUSON, REALTOR®

Eli@TomSmithLand.com

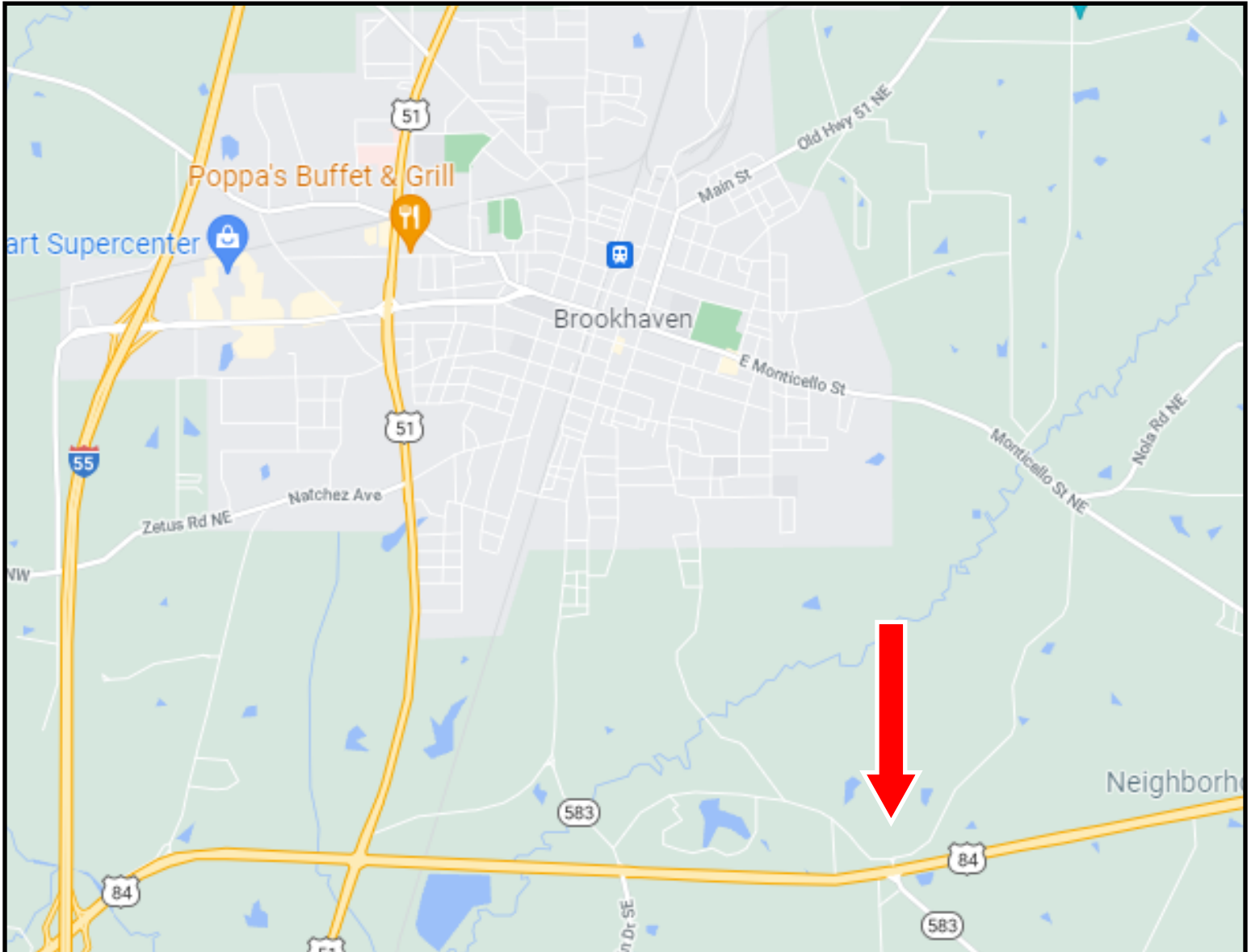
601.990.5070 office | 601.757.7117 cell



TomSmithLandandHomes.com

Information is believed to be accurate but not guaranteed.

Directional Map



Directions from Brookhaven: Travel east on Hwy 84 toward Monticello. At the intersection of Hwy 583 and County Farm Road Turn north on County farm road. Take immediate left onto Greenview Trail. Travel approx. 1/2 mile and Red Autumn Lane will be on the right.



2010-2021
AMERICA'S
BEST
BROKERAGES

Proud to be
CZEX
endorsed!

Call me today!

ELI FERGUSON, REALTOR®

Eli@TomSmithLand.com

601.990.5070 office | 601.757.7117 cell



TomSmithLandandHomes.com

Information is believed to be accurate but not guaranteed.