

51± Acre Cutover Hunting Tract Holmes County, MS



\$102,000

- 25± Acres of Cutover
- 15± Acres of Timber
- Large Creek on North Boundary
- Deer and Turkey Hunting
- Paved County Road Frontage
- Utilities Available at Road
- 15 Minutes from Lexington, MS



Directions From Lexington, MS: From the intersection of Hwy 12 and Hwy 17, drive west on Hwy 12 for 8. miles. Turn right onto Rosebank-Mt Olive Road and in 5.1 miles, the property will be on your left.



Call me today!

ADAM HESTER, REALTOR®

Adam@TomSmithLand.com

601.898.2772 office | 601.506.5058 cell

**Tom
Smith
LAND AND
HOMES**

Expect More. Get More.

TomSmithLandandHomes.com

Information is believed to be accurate but not guaranteed.

Take a look at this 51± acre hunting property in Holmes County, MS. Located approximately 15 minutes northwest of Lexington, this property currently offers a mix of cutover and hardwood timber. A large creek runs along the north property boundary, which acts as a water source for wildlife. The cutover offers great bedding and areas that can be opened to create large food plots. The timber is primarily open and has large oak trees scattered throughout. Deer and turkey tracks were noted on inspection! Utilities are available at the road. Acreage is being estimated out of a larger tract. A survey will be done to determine the exact acreage.



ADAM HESTER, REALTOR®
 Adam@TomSmithLand.com
 601.898.2772 office | 601.506.5058 cell



TomSmithLandandHomes.com
 Information is believed to be accurate but not guaranteed.



ADAM HESTER, REALTOR®
 Adam@TomSmithLand.com
 601.898.2772 office | 601.506.5058 cell



TomSmithLandandHomes.com
 Information is believed to be accurate but not guaranteed.



51± Acres

33.216371, -90.138834

Aerial Map

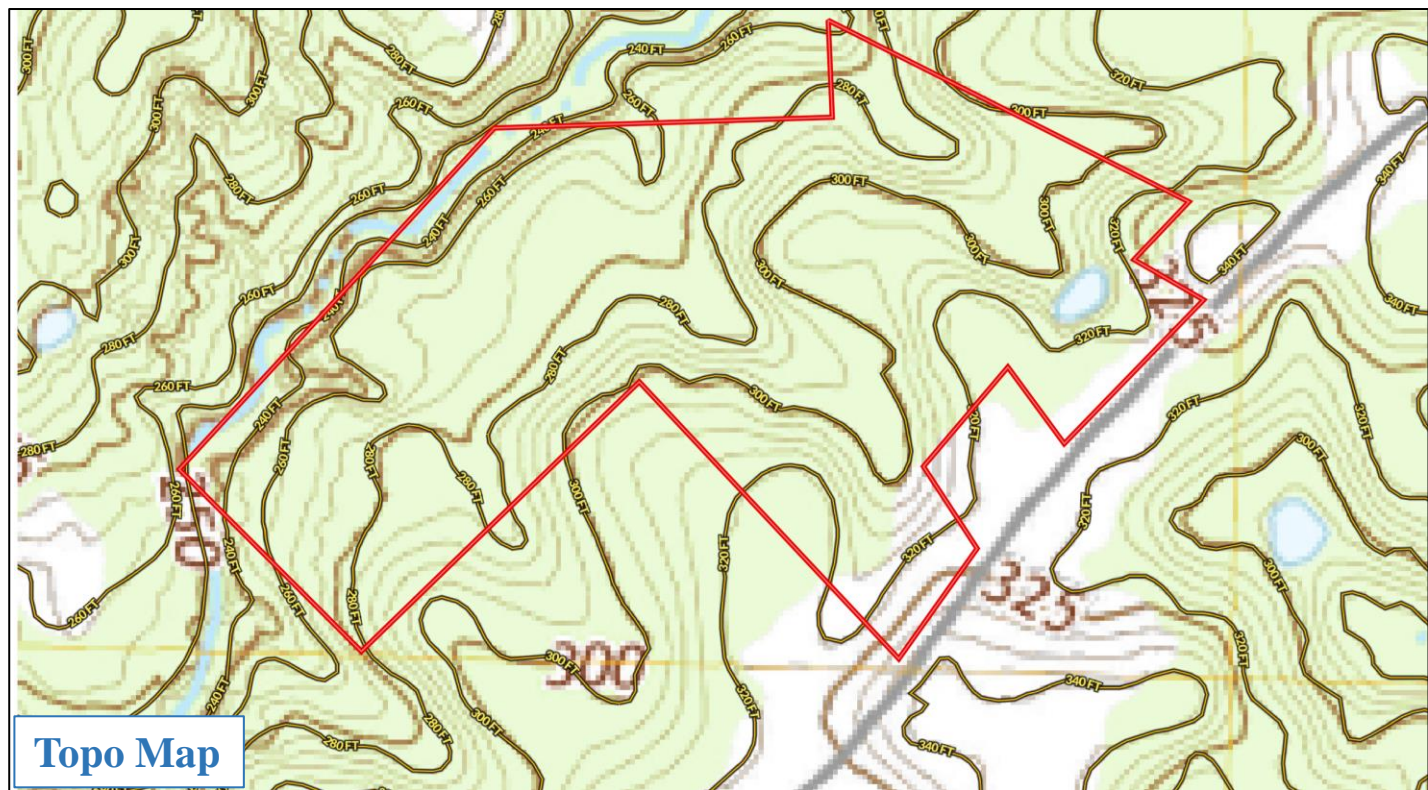


ADAM HESTER, REALTOR®
Adam@TomSmithLand.com
601.898.2772 office | 601.506.5058 cell

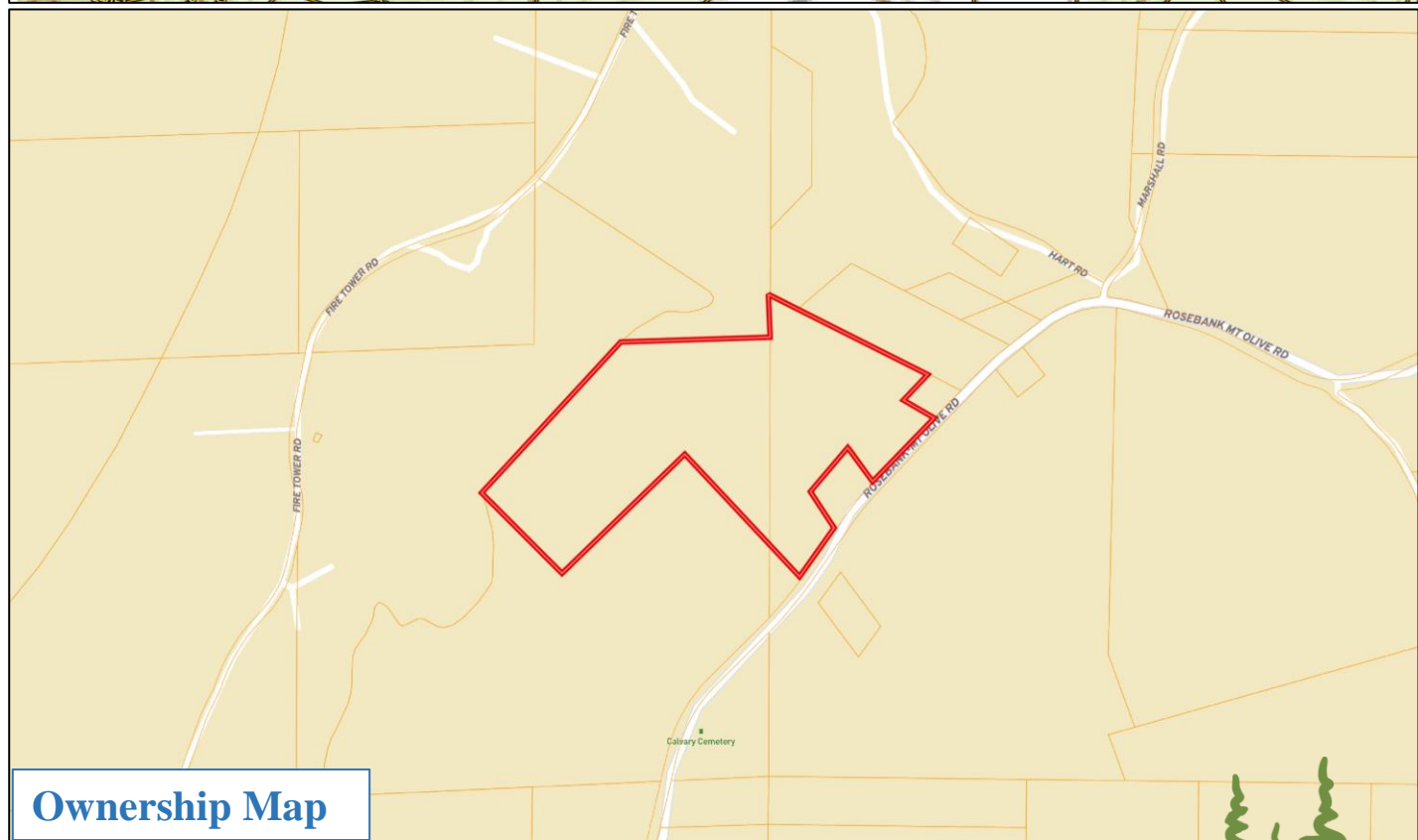


TomSmithLandandHomes.com

Information is believed to be accurate but not guaranteed.



Topo Map



Ownership Map



ADAM HESTER, REALTOR®
 Adam@TomSmithLand.com
 601.898.2772 office | 601.506.5058 cell

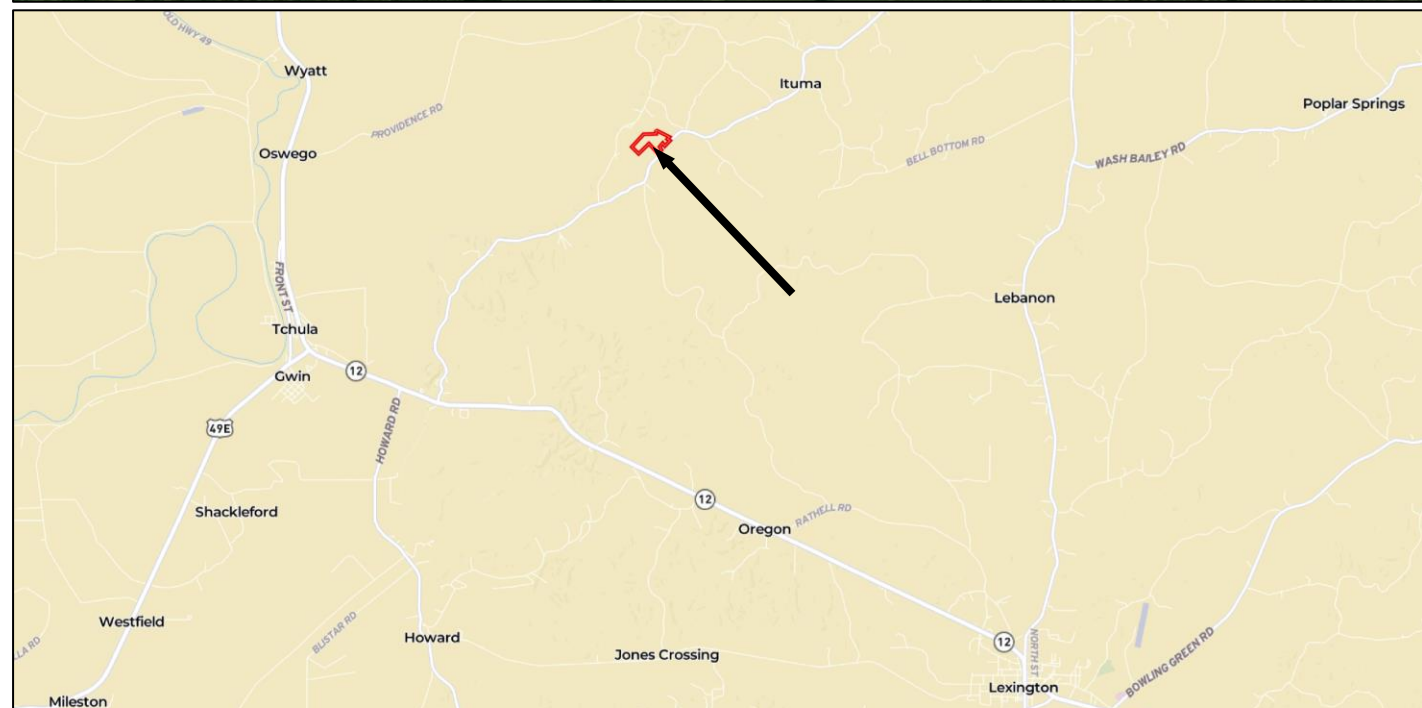


TomSmithLandandHomes.com

Information is believed to be accurate but not guaranteed.



Overview Map



Directions From Lexington, MS: From the intersection of Hwy 12 and Hwy 17, drive west on Hwy 12 for 8. miles. Turn right onto Rosebank-Mt Olive Road and in 5.1 miles, the property will be on your left.



Call me today!

ADAM HESTER, REALTOR®

Adam@TomSmithLand.com

601.898.2772 office | 601.506.5058 cell



TomSmithLandandHomes.com

Information is believed to be accurate but not guaranteed.