

51± Acre Hunting Tract in Holmes County, MS



Welcome to your new Holmes County Hunting Tract, situated just 15 minutes from Lexington, MS! This 51± acre tract provides a diversity of deer and turkey hunting. A large creek runs along the property's western boundary, which serves as a water supply for wildlife. There are 25± acres of cutover that provide food plot development sites and deer bedding. The timber is open and has large oaks scattered throughout. Paved County Road frontage, and utilities are available from the road. The exact acreage will be determined by survey. Call Kadero Edley today for your private showing!



Call me today!

KADERO EDLEY, REALTOR®
Kadero@TomSmithLand.com
601.898.2772 **office** | 601.488.7000 **cell**



TomSmithLandandHomes.com

Information is believed to be accurate but not guaranteed.



Call me today!

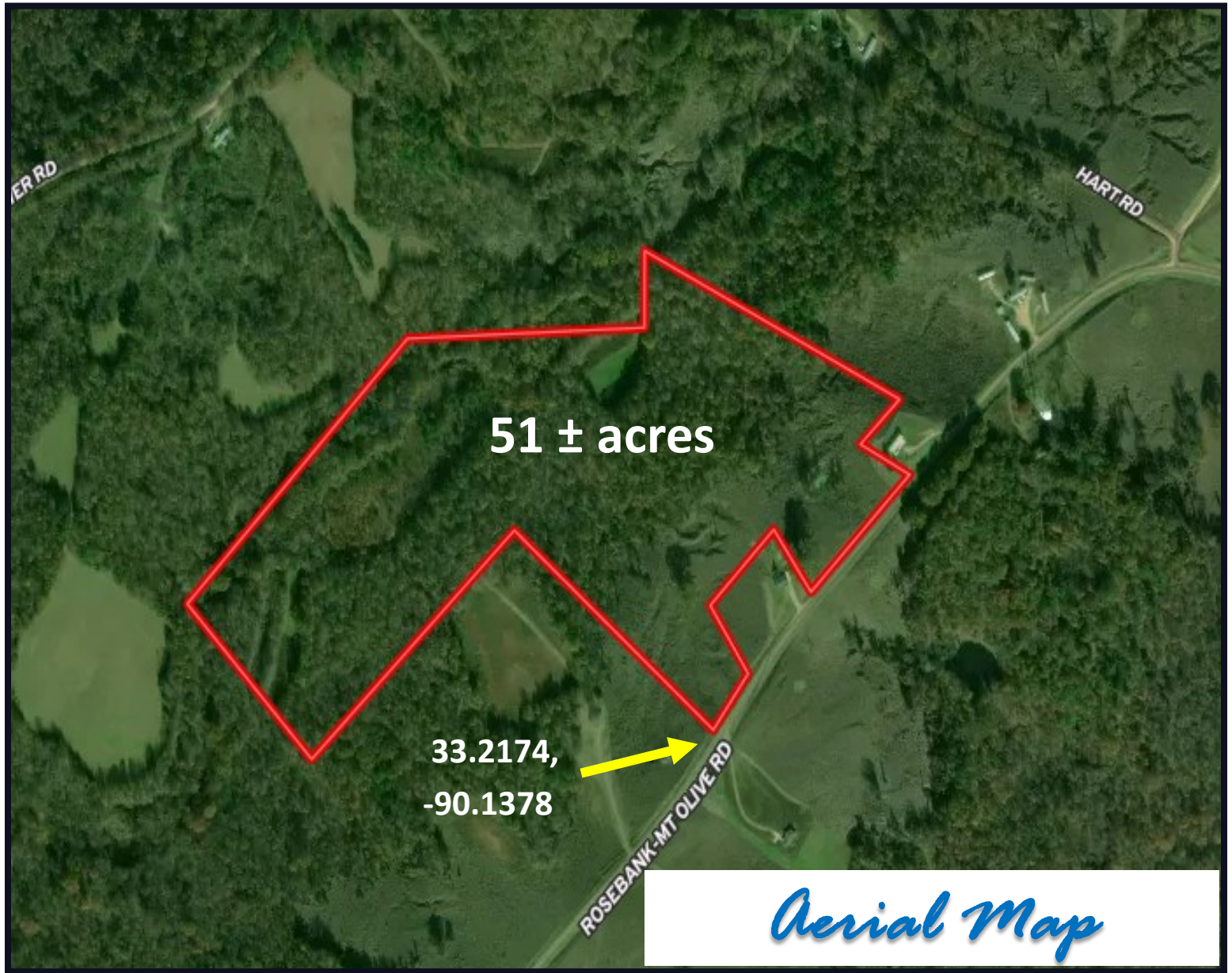
KADERO EDLEY, REALTOR®
 Kadero@TomSmithLand.com
 601.898.2772 **office** | 601.488.7000 **cell**



Expect More. Get More.

TomSmithLandandHomes.com

Information is believed to be accurate but not guaranteed.



[CLICK HERE FOR INTERACTIVE MAP](#)

Call me today!

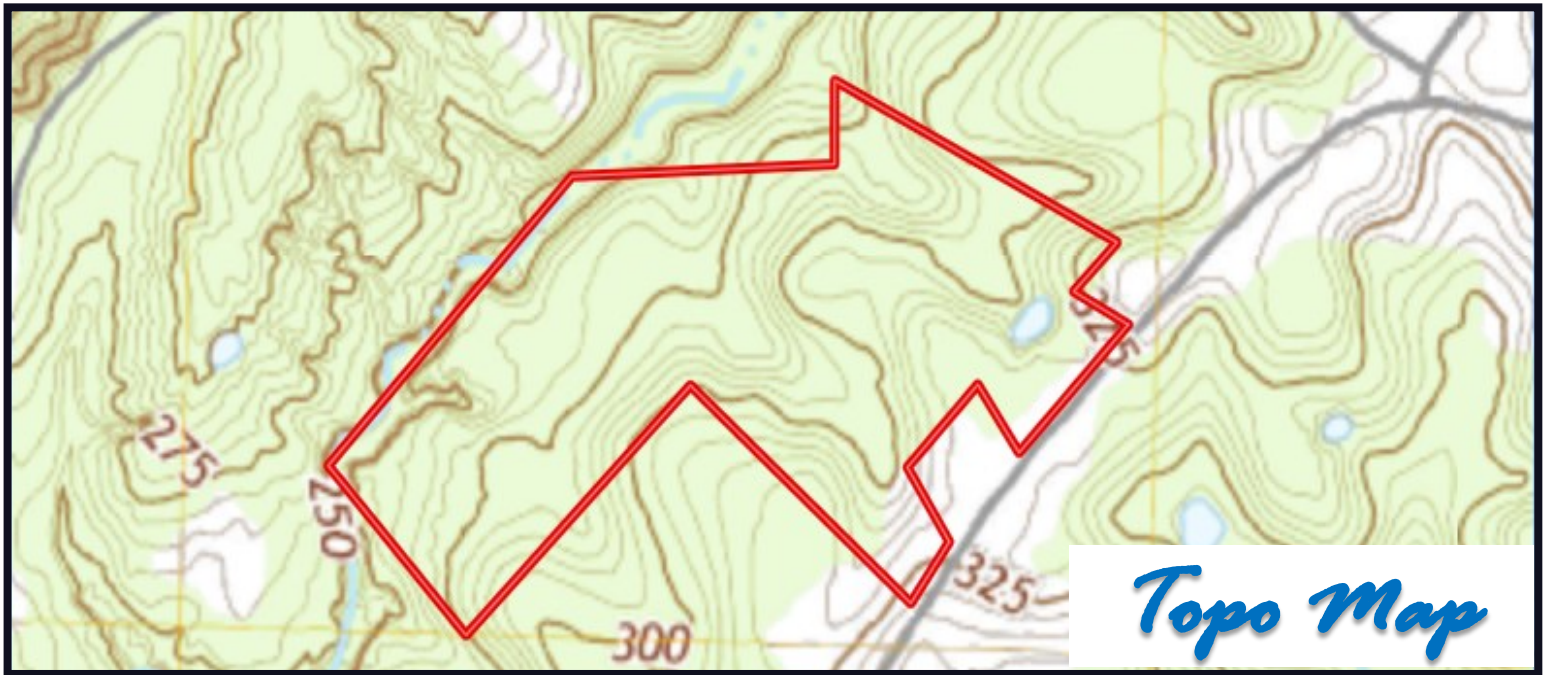
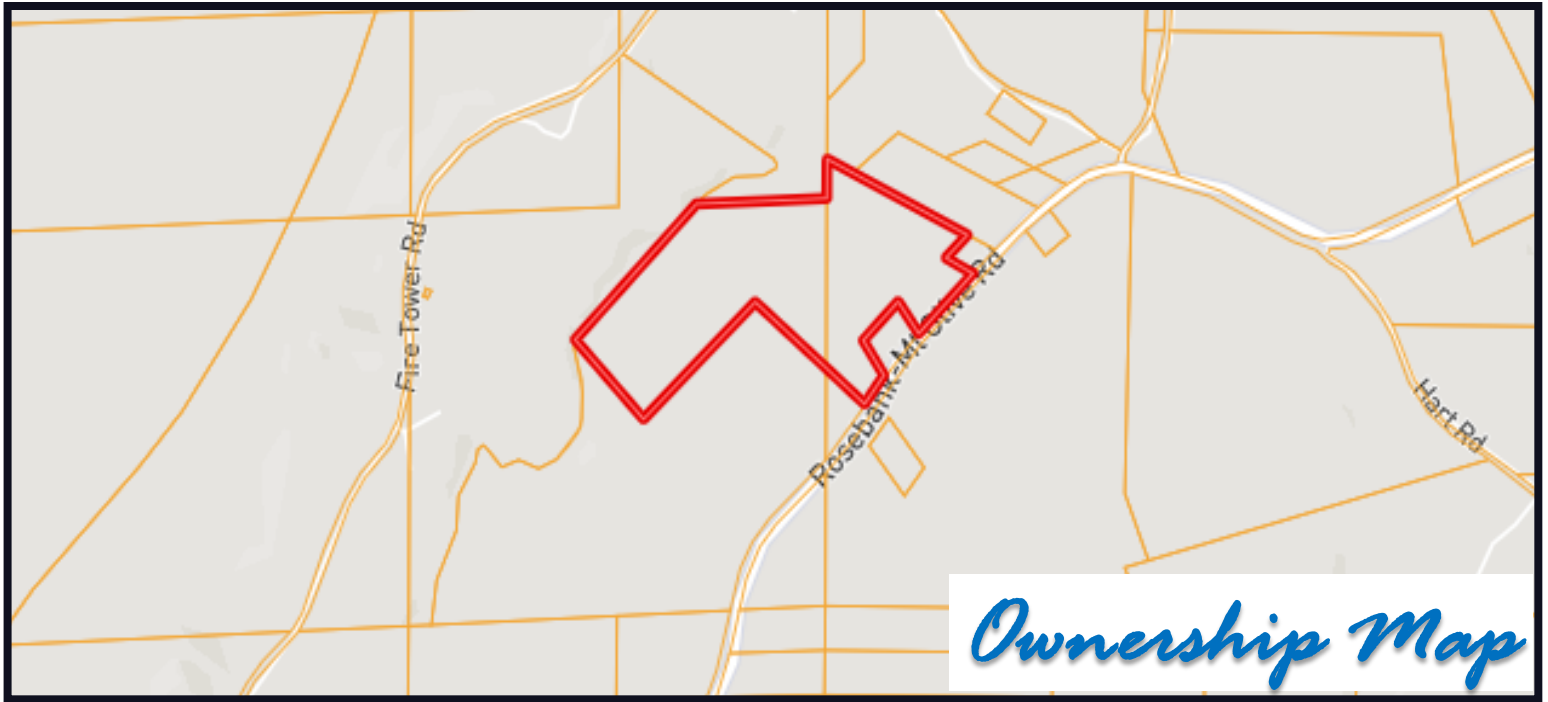
KADERO EDLEY, REALTOR®
Kadero@TomSmithLand.com
601.898.2772 **office** | 601.488.7000 **cell**



Expect More. Get More.

TomSmithLandandHomes.com

Information is believed to be accurate but not guaranteed.



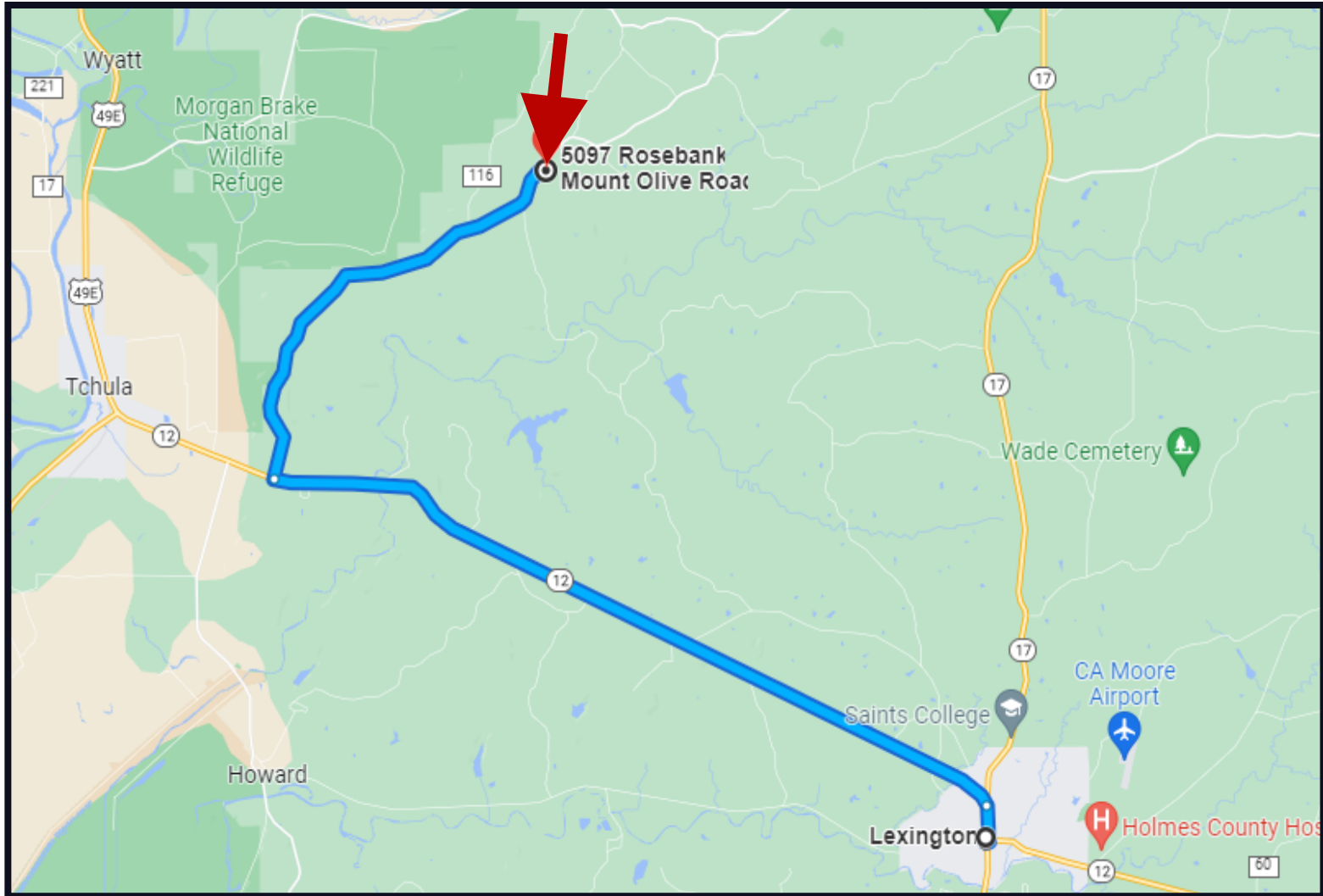
*Call me
today!*

KADERO EDLEY, REALTOR®
Kadero@TomSmithLand.com
601.898.2772 **office** | 601.488.7000 **cell**



TomSmithLandandHomes.com

Information is believed to be accurate but not guaranteed.



Directional Map

DIRECTIONS: From Court Square in Lexington, MS: Travel North in Carrollton Street toward Telegraph Steet, Then take a slight left onto MS-12 W for 8.8 Miles, then turn right onto Rosebank Mt Olive Road and travel 5.1 mles, The property will be on your left.

[Google Maps Link](#)

Call me today!

KADERO EDLEY, REALTOR®
 Kadero@TomSmithLand.com
 601.898.2772 **office** | 601.488.7000 **cell**



TomSmithLandandHomes.com

Information is believed to be accurate but not guaranteed.