



552 doc clark rd

a picturesque home on 7.2 acres



marketed by
Ellen Smith
Tom Smith Land and Homes
office: 601.898.2772
cell: 601.954.9395



about the

HOME

Wow! See this picturesque home on 7.2 acres in Morton in Scott County, MS. This custom-built one-owner fabulous home features 4 bedrooms (one upstairs), 3.5 baths, gourmet kitchen, large game room and saltwater pool, tanning ledge with rock waterfall. To top it off, it is all surrounded by 7.24 acres of woods and is very private.

You walk into a spacious foyer with an arched brick entry into the dining room, when you open the double front door. The dining room is spacious with a gorgeous coffered beamed ceiling. It has a butler pantry, perfect for a coffee bar, leading into the kitchen.

The kitchen has all stainless-steel appliances, double ovens, pantry, apron sink, granite countertops, and a central island with a cooktop and a decorative cook vent above the island. The granite island has room to seat 4 and leads into the cozy living room with a brick fireplace with an ornate mantle. The other wall has built-in shelves and storage and an area for your television.

One bedroom is upstairs with its full bath and closet, and the other three bedrooms and 1/2 bath and laundry are downstairs. The primary bedroom is large with a spa-like primary bathroom. The primary bathroom has his and hers vanities with granite counter space, a large walk-in closet with built-in drawers, a spa soaking tub, and an extra-large walk-in shower with a pebble floor with 3 shower heads! The primary bath feels like a spa retreat!

This property is very private, and any visitor must have access to the private electric gate at the end of the driveway to enter. If you want to relax outside, you are surrounded by nature and majestic hardwoods.

See this exceptional listing today! This property is an oasis from the city and is perfect for getting

marketed by

Ellen Smith
Tom Smith Land and Homes
office: 601.898.2772
cell: 601.954.9395



features

SPOTLIGHT

- Picturesque home on 7.2 Acres
- 4 bedroom, 3.5 baths, 3,000 sq. ft.
- Only 7 years old
- Cozy living room with a brick fireplace featuring an ornate mantle.
- Gourmet kitchen with stainless steel appliances.
- Master bedroom with spa-like master bathroom.
- Stunning game room with a large window and door to the back patio.
- Surround sound speakers in living room and game room.
- 3 car garage
- Saltwater gunite pool featuring a tanning ledge with a rock waterfall.
- Private electric gate
- 2 tankless water heaters
- 3 HVAC zones

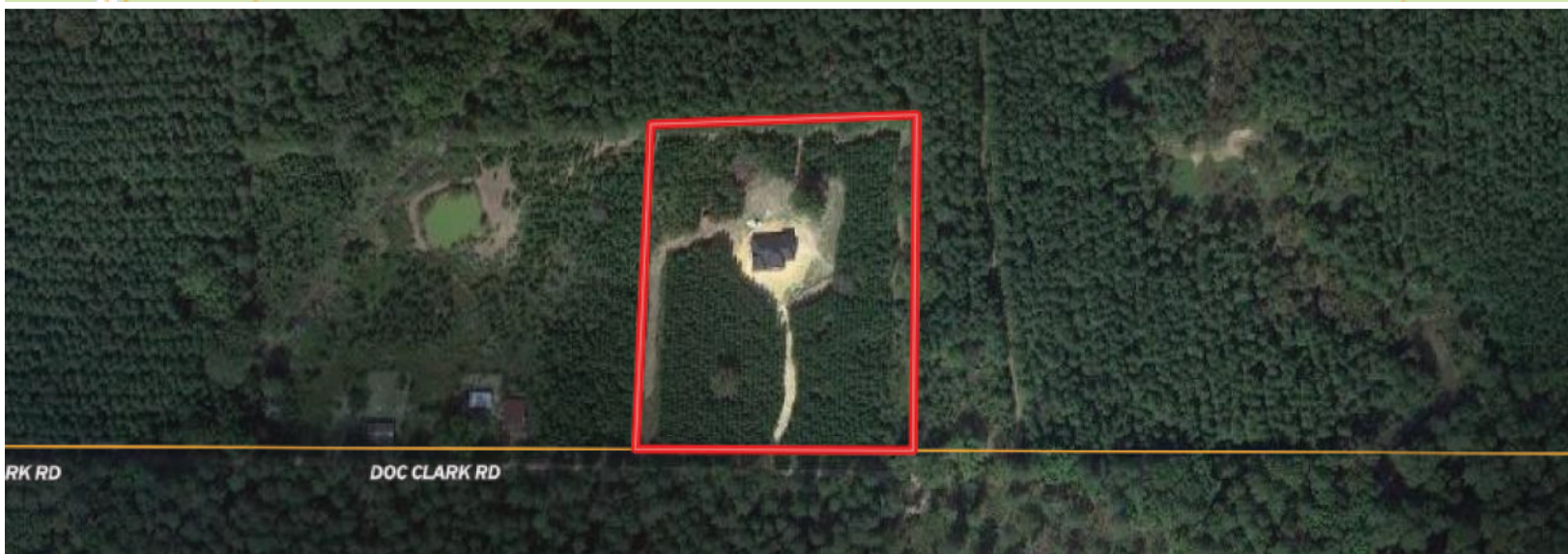
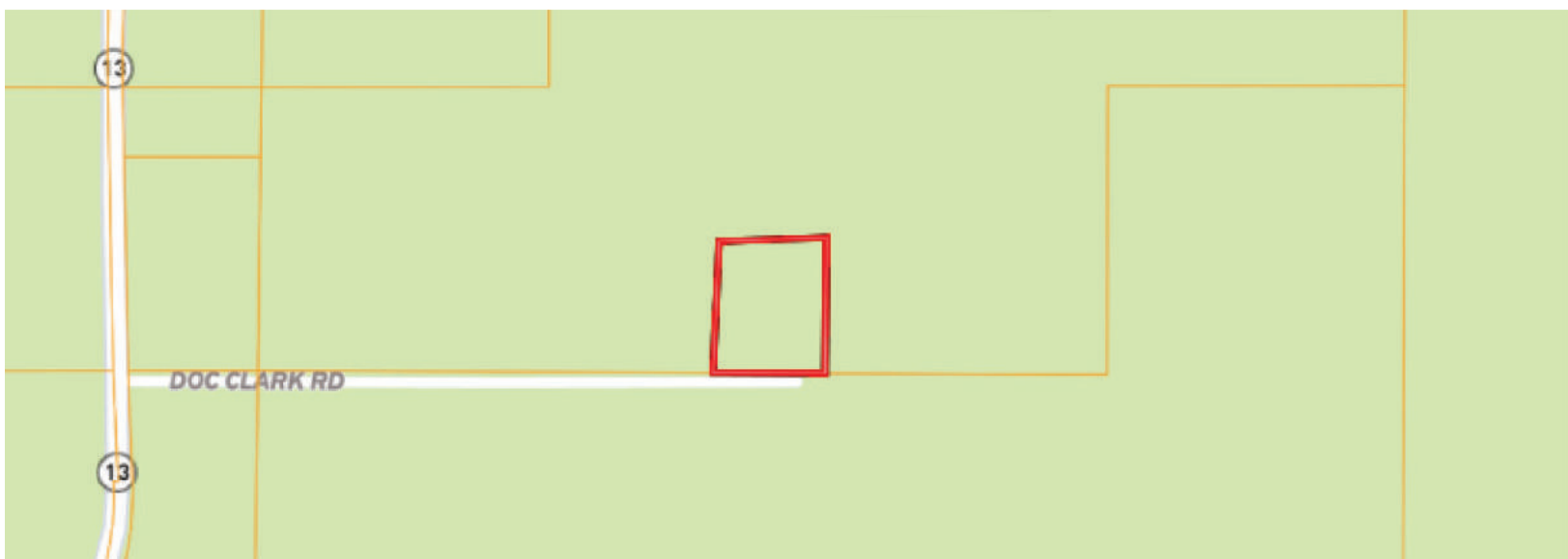


marketed by
Ellen Smith
Tom Smith Land and Homes
office: 601.898.2772
cell: 601.954.9395

asking
PRICE

\$564,900





DIRECTIONS TO PROPERTY

From I55/I20: Take I20 East towards Meridian for 30 miles, take exit 77 for MS 13N (towards Morton) 2.2 Miles, Turn right on Doc Clark Rd, go up road 1/2 mile, you will see iron security gate.

From Spillway: Ms-43 South for 18 Miles, Continue on MS-481 South for 12 miles, Turn left on MS-13 North for 3.7 miles turn right onto Doc Road. go up road 1/2 mile, you will see iron security gate.

FOR MORE INFORMATION CONTACT ELLEN SMITH



www.tomsmithlandandhomes.com

office: 601.898.2772

cell: 601.954.9395