

Newly Renovated Home in Cleveland Bolivar County, MS



1115 Maple Street Cleveland, MS 38732

Look at this gorgeous brick house located .54+/- acres in Cleveland, MS. This 3,648 square foot Bolivar County home has been completely renovated and offers four bedrooms, three baths, tile and hardwood flooring, and stainless steel Viking appliances in the kitchen. The master bedroom has an ensuite bathroom featuring a jacuzzi tub, walk-in shower and large walk-in closet. The house also has a large salt water pool with a lay out deck. Call Anthony Steen today for your private showing.

Directions from the Intersection of Hwy 8 & 61 in Cleveland, MS: Travel west on Hwy 8 (Sunflower Road) for 1 mile and turn left onto N Fifth Ave. Continue for 0.4 miles to Maple Street and turn right. The destination is on the left.



Call me today!

ANTHONY STEEN, REALTOR®
Anthony@TomSmithLand.com
662.441.2500 office | 662.645.5151 cell



TomSmithLandandHomes.com

Information is believed to be accurate but not guaranteed.



ANTHONY STEEN, REALTOR®
 Anthony@TomSmithLand.com
 662.441.2500 office | 662.645.5151 cell



TomSmithLandandHomes.com

Information is believed to be accurate but not guaranteed.



ANTHONY STEEN, REALTOR®
 Anthony@TomSmithLand.com
 662.441.2500 office | 662.645.5151 cell



TomSmithLandandHomes.com

Information is believed to be accurate but not guaranteed.

AERIAL MAP



[Click for Interactive Map](#)



ANTHONY STEEN, REALTOR®
Anthony@TomSmithLand.com
662.441.2500 office | 662.645.5151 cell

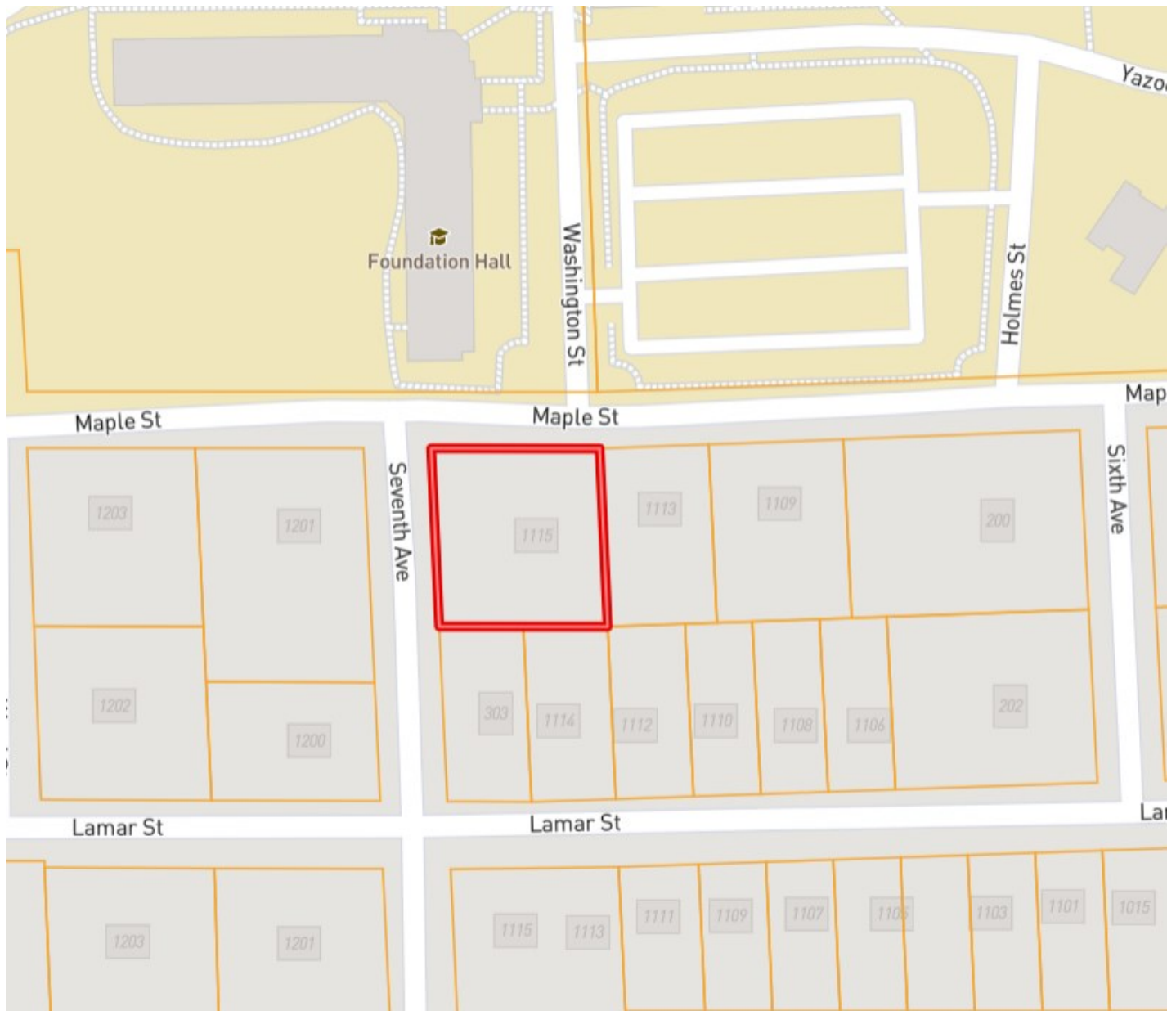


Expect More. Get More.

TomSmithLandandHomes.com

Information is believed to be accurate but not guaranteed.

OWNERSHIP MAP



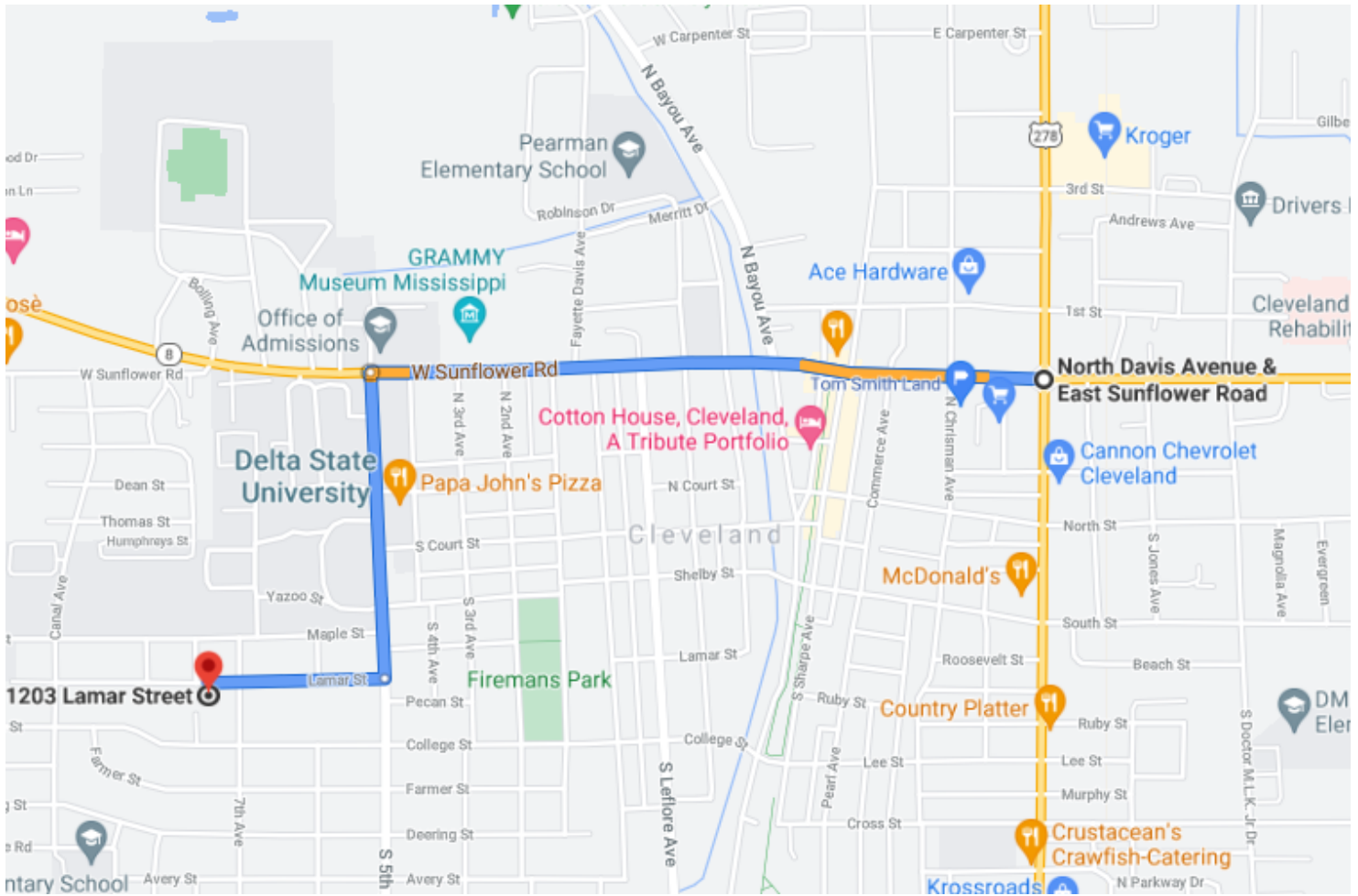
ANTHONY STEEN, REALTOR®
Anthony@TomSmithLand.com
662.441.2500 office | 662.645.5151 cell



TomSmithLandandHomes.com

Information is believed to be accurate but not guaranteed.

DIRECTIONAL MAP



1115 Maple Street Cleveland, MS 38732

Directions from the Intersection of Hwy 8 & 61 in Cleveland, MS: Travel west on Hwy 8 (Sunflower Road) for 1 mile and turn left onto N Fifth Ave. Continue for 0.4 miles to Maple Street and turn right. The destination is on the left.

[Click for directions](#)



ANTHONY STEEN, REALTOR®
Anthony@TomSmithLand.com
662.441.2500 **office** | 662.645.5151 **cell**



Expect More. Get More.

TomSmithLandandHomes.com

Information is believed to be accurate but not guaranteed.