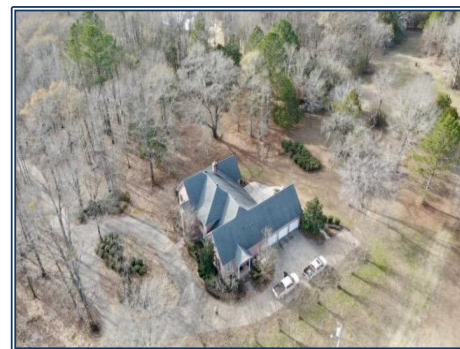
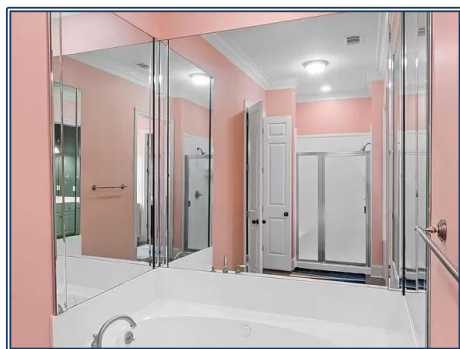




This custom 5 bed/5 bath home sits on 15 +/- acres of beautiful land including a 4-acre stocked lake. It offers the very best of both worlds; the peace and serenity from living in the country while still having the convenience of being within 10 minutes of all the amenities that Madison, MS offers. This home is within the Madison County School District, which is one of the fastest growing, top-rated districts in the state. The gated entrance and concrete driveway leads to the secluded home situated among hardwoods. The main level of the home features a beautiful kitchen with custom built cabinets, a walk-in pantry, a master bedroom, a second bedroom and an office. There are two bedrooms upstairs, as well as a large bonus room over the garage. This home has an abundance of storage including a 3 car garage and a shop in the back that has power and water. Call today for your showing!

576 Robinson Springs Road, Flora, MS

32.499096, -90.234918 GPS



## \$975,000

15 Acres  
UC #23042-30025



**Trey Meacham**

meachamandassociatesins@gmail.com

Office: 601.250.0017

Cell: 601.622.1974

SouthernStatesRealty.com