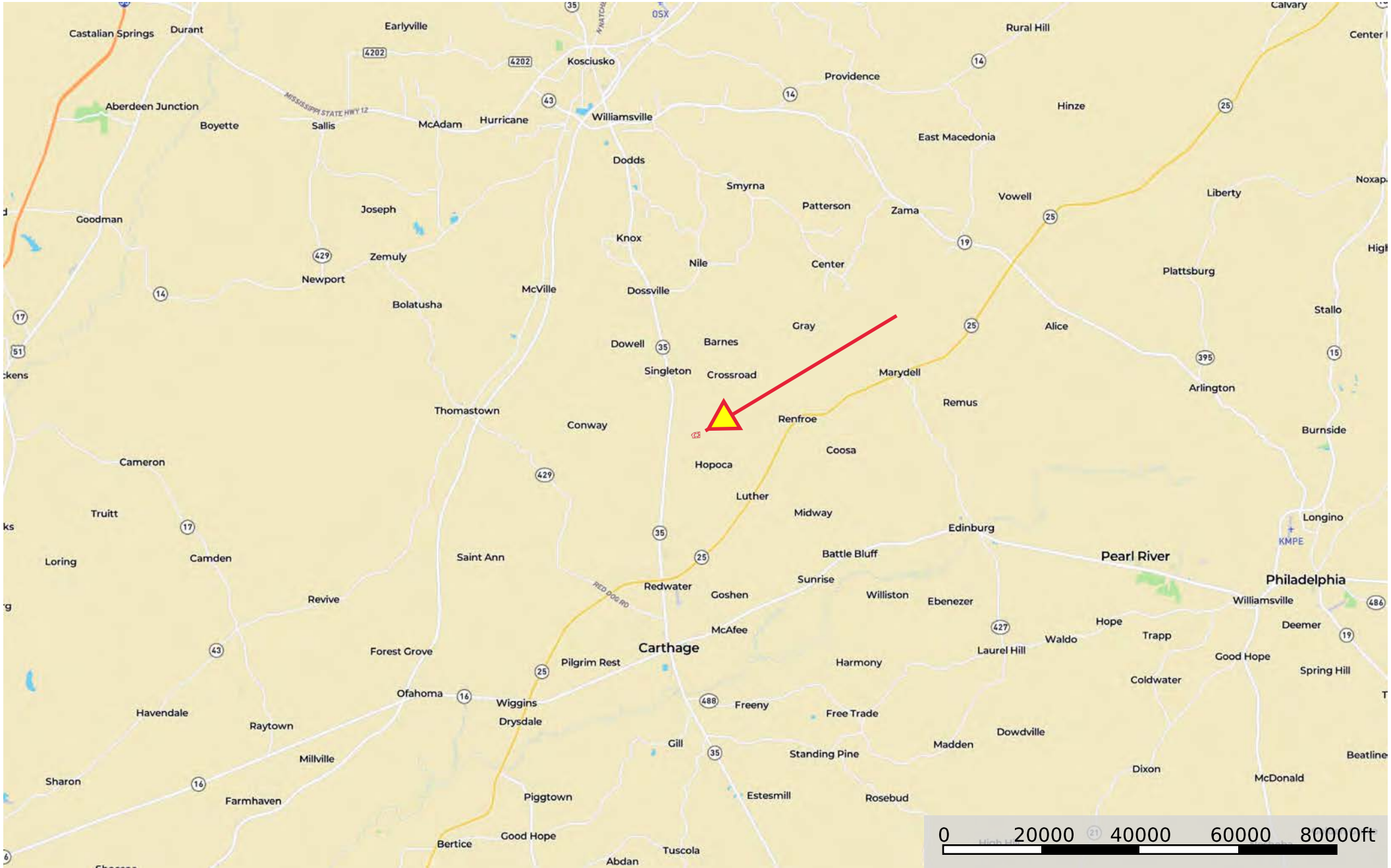

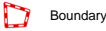
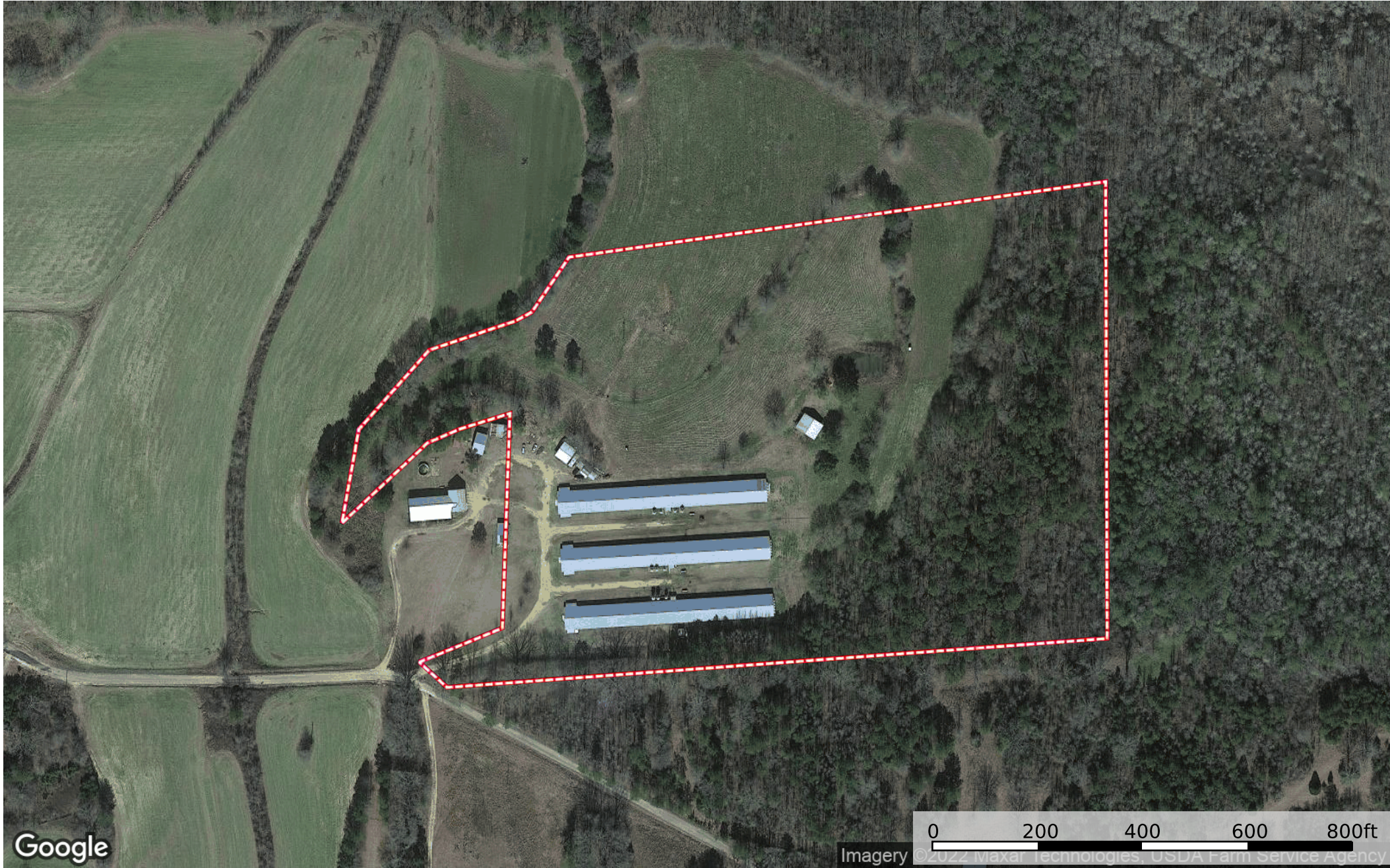


JD-717 Keelie Road, Carthage, MS
Leake County, Mississippi, 22.3 AC +/-

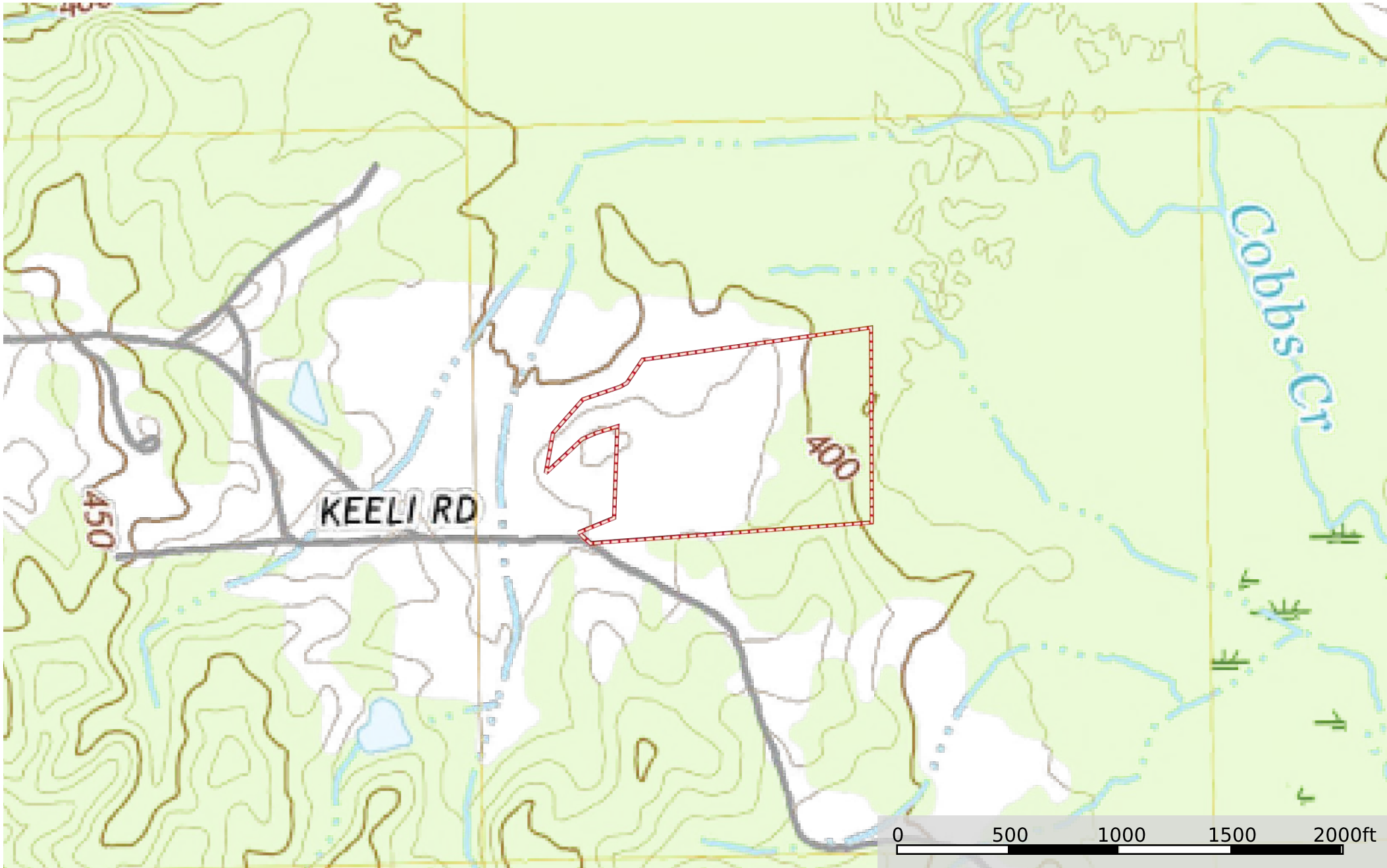



 Boundary




Boundary





 Boundary



 Boundary

Boundary 23.1 ac

SOIL CODE	SOIL DESCRIPTION	ACRES	%	CPI	NCCPI	CAP
BdA	Bude silt loam, 0 to 2 percent slopes	11.85	51.32	0	57	2w
RK	Rosebloom and Arkabutla soils, frequently flooded	6.23	26.98	0	59	5w
SmD2	Smithdale fine sandy loam, 8 to 15 percent slopes, eroded	5.02	21.74	0	70	4e
TOTALS		23.09(*)	100%	-	60.39	3.24

(*) Total acres may differ in the second decimal compared to the sum of each acreage soil. This is due to a round error because we only show the acres of each soil with two decimal.

Capability Legend

Increased Limitations and Hazards

Decreased Adaptability and Freedom of Choice Users

Land, Capability

	1	2	3	4	5	6	7	8
'Wild Life'	•	•	•	•	•	•	•	•
Forestry	•	•	•	•	•	•	•	
Limited	•	•	•	•	•	•	•	
Moderate	•	•	•	•	•	•		
Intense	•	•	•	•	•			
Limited	•	•	•	•				
Moderate	•	•	•					
Intense	•	•						
Very Intense	•							

Grazing Cultivation

(c) climatic limitations (e) susceptibility to erosion

(s) soil limitations within the rooting zone (w) excess of water