



Ranch Style Home on 0.72+/- Acres Copiah County, MS



114 Primrose Lane Hazlehurst, MS 39083

Come take a look at this well kept three bedroom, two bath ranch style home in Copiah County, MS, with a lake view situated on .72+/- acres. This one will catch your eye from the moment you pull into the quiet neighborhood and keep you longer than you had planned to stay once you've reached the back deck and take in the view. Sunny day... no worries, with one touch of the remote, the Sunsetter awning will provide you with much needed shade while you catch up on your favorite book. In this 2,000+/- square foot home, you will find two spacious living rooms with a full dining/kitchen central to the home and many extras such as a built-in coffee bar, an extension table-top to a spacious kitchen island, an abundance of cabinets with ample storage space and a basement/workspace. The addition in the back, added in 1991, provides the option as a fourth bedroom or mother-in-law suite with a full bath, laundry and large spacious closets. Double pane windows have been installed, original hardwood floors have been preserved and this is a must see! Located minutes from I-55 and all the amenities of Hazlehurst. Call Sabrina today to schedule your appointment today!

Directions from exit 61 on I-55 N in Hazelhurst, MS: Turn right onto Hwy 28 E and travel 3.9 miles. Take a right onto Georgetown Road to Hillside Drive. Take an immediate left onto Pinehurst Circle. In approximately 243 feet, turn left onto Primrose Lane and the destination will be on your right.

Address: 114 Primrose Lane Hazlehurst, MS 39083



call me today!

SABRINA WOLFF, REALTOR®
Sabrina@TomSmithHomes.com
601.990.5070 office | 601.754.3763 cell



TomSmithLandandHomes.com

Information is believed to be accurate but not guaranteed.



Call me today!

SABRINA WOLFE, REALTOR®
Sabrina@TomSmithHomes.com
601.990.5070 office | 601.754.3763 cell



TomSmithLandandHomes.com

Information is believed to be accurate but not guaranteed.



2010-2021
AMERICAN
BEST
BROKERAGES

Call me today!

SABRINA WOLFE, REALTOR®
Sabrina@TomSmithHomes.com
601.990.5070 office | 601.754.3763 cell



TomSmithLandandHomes.com

Information is believed to be accurate but not guaranteed.



2010-2021
AMERICAN
BEST
BROKERAGES

Call me today!

SABRINA WOLFE, REALTOR®
Sabrina@TomSmithHomes.com
601.990.5070 office | 601.754.3763 cell



Expect More. Get More.

TomSmithLandandHomes.com

Information is believed to be accurate but not guaranteed.

Aerial Map



LandReport
2010-2021
AMERICA'S
BEST
BROKERAGES

call me today!

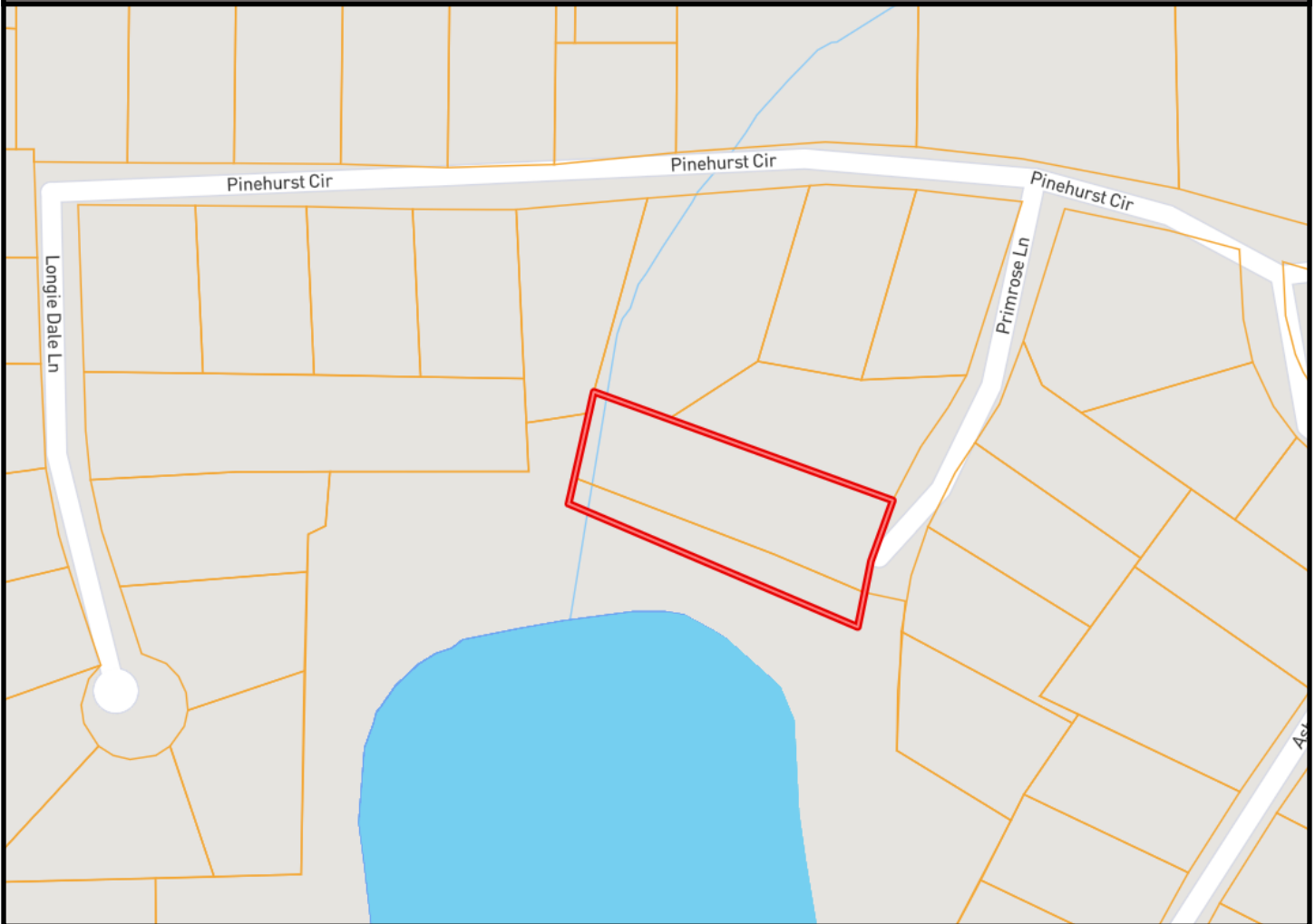
SABRINA WOLFF, REALTOR®
Sabrina@TomSmithHomes.com
601.990.5070 office | 601.754.3763 cell



TomSmithLandandHomes.com

Information is believed to be accurate but not guaranteed.

Ownership Map



Call me today!

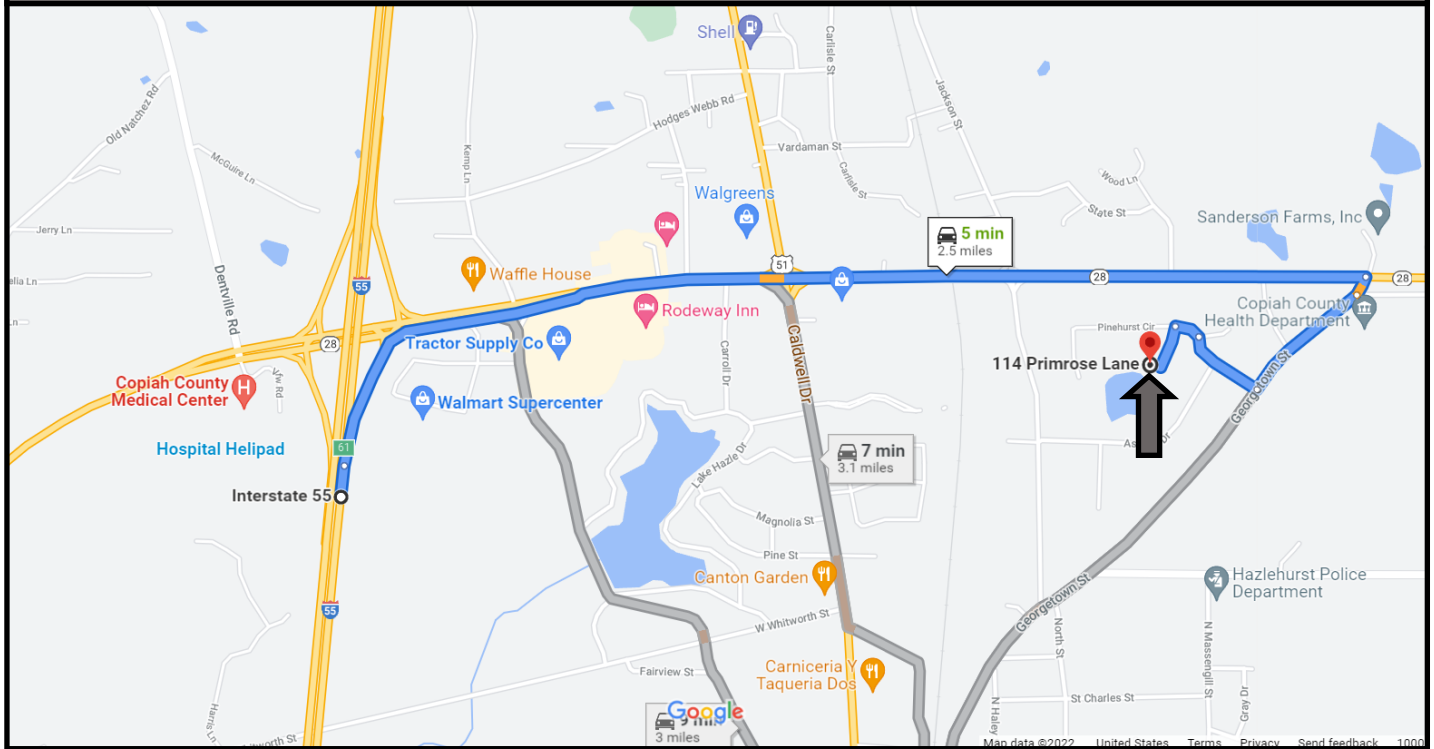
SABRINA WOLFF, REALTOR®
Sabrina@TomSmithHomes.com
601.990.5070 office | 601.754.3763 cell



TomSmithLandandHomes.com

Information is believed to be accurate but not guaranteed.

Directional Map



Directions from exit 61 on I-55 N in Hazelhurst, MS: Turn right onto Hwy 28 E and travel 3.9 miles. Take a right onto Georgetown Road to Hillside Drive. Take an immediate left onto Pinehurst Circle. In approximately 243 feet, turn left onto Primrose Lane and the destination will be on your right.

Address: 114 Primrose Lane Hazelhurst, MS 39083



Call me today!

SABRINA WOLFF, REALTOR®
Sabrina@TomSmithHomes.com
601.990.5070 office | 601.754.3763 cell



Expect More. Get More.

TomSmithLandandHomes.com

Information is believed to be accurate but not guaranteed.